

# Anti-Wnt Family Member 16 Recombinant Rabbit Monoclonal Antibody



**Catalog #: 2688**

## Aliases

WNT16; Wnt Family Member 16; Wingless-Type MMTV Integration Site Family, Member 16; Protein Wnt-16; Wingless-Type MMTV Integration Site Family Member 16b

## Background

Gene Name: WNT16

NCBI Gene Entry: [51384](#)

UniProt Entry: [Q9UBV4](#)

## Application Information

Molecular Weight: Predicted, 41 kDa; observed, 41 kDa

Clonality: Rabbit monoclonal antibody

Clone ID: 24GB1880

Species Reactivity: Human, mouse, rat

Applications Tested: Western blotting (WB), immunocytochemistry (IC)

## Immunogen

A synthesized peptide derived from human Wnt family member 16

## Isotype

Rabbit IgG

## Storage Buffer

Supplied in PBS (pH 7.4) containing 50% glycerol, and 0.02% sodium azide.

## Storage

Store at -20 °C for one year.

## Recommended Dilutions

Western Blotting (WB): 1:1,000-1:5,000

Immunocytochemistry (IC): 1:100-1:1,000

**Note:** This product is for research use only.

## Validation Data

---

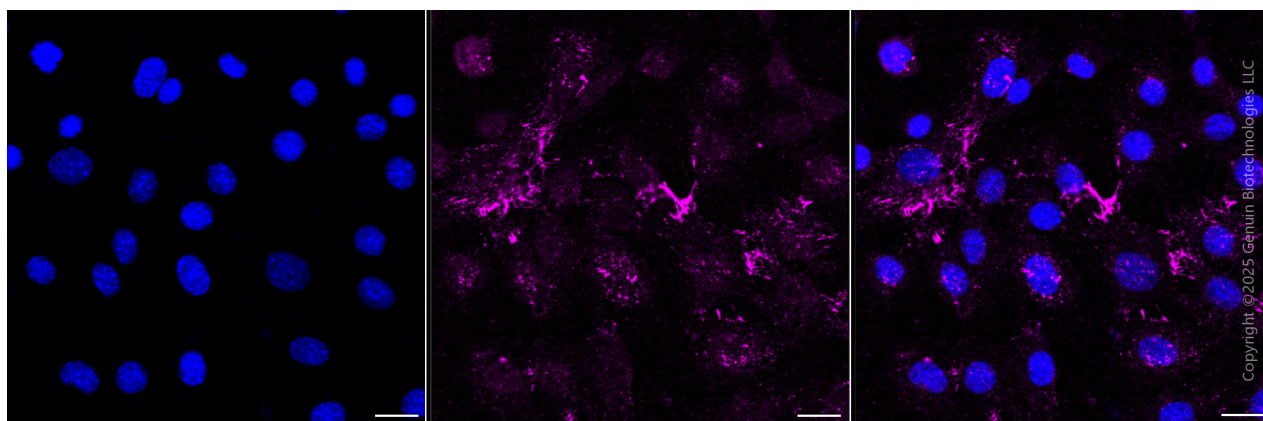
### SUPPORT

SUPPORT@GENUINBIOTECH.COM  
TEL: +1-540-855-7041

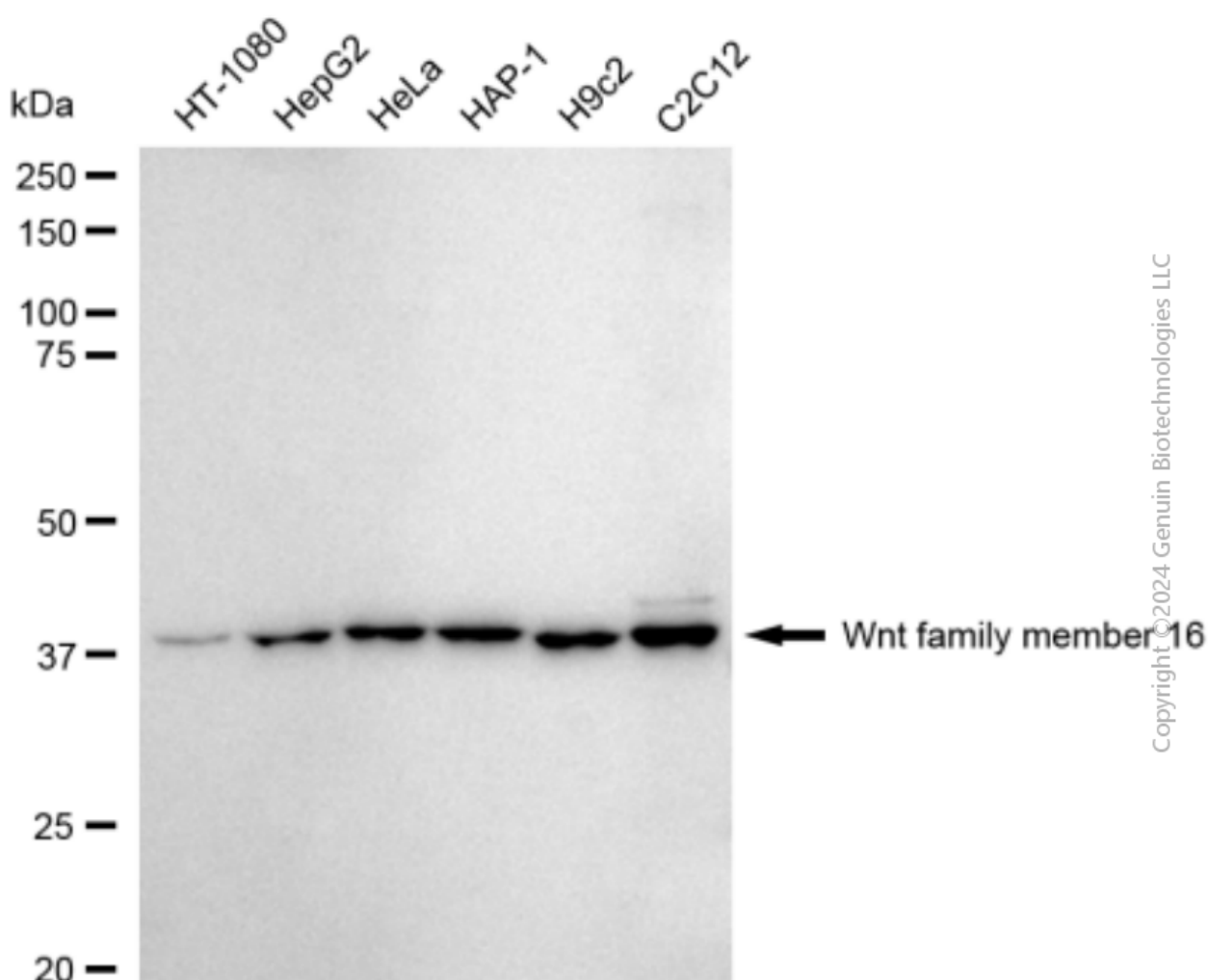
### ORDERS

SALES@GENUINBIOTECH.COM  
FAX: +1-540-855-7041

[WWW.GENUINBIOTECH.COM](http://WWW.GENUINBIOTECH.COM)



Immunocytochemical staining of C2C12 cells with anti-Wnt family member 16 antibody (Cat#2688, 1:1,000) . Nuclei were stained blue with DAPI; Wnt family member 16 was stained magenta with Alexa Fluor® 647. Images were taken using Leica stellaris 5. Protein abundance based on laser Intensity and Smart Gain □ Low. Scale bar, 20 μm.



Western blotting analysis using anti-Wnt family member 16 antibody (Cat#2688). Total cell

## **Anti-Wnt Family Member 16 Recombinant Rabbit Monoclonal Antibody**

PAGE 3

lysates (30 µg) from various cell lines were loaded and separated by SDS-PAGE. The blot was incubated with anti-Wnt family member 16 antibody (Cat#2688, 1:5,000) and HRP-conjugated goat anti-rabbit secondary antibody (Cat#201, 1:20,000) respectively. Image was developed using FeQ™ ECL Substrate Kit (Cat#226).

---

### **SUPPORT**

SUPPORT@GENUINBIOTECH.COM  
TEL: +1-540-855-7041

### **ORDERS**

SALES@GENUINBIOTECH.COM  
FAX: +1-540-855-7041

**[WWW.GENUINBIOTECH.COM](http://WWW.GENUINBIOTECH.COM)**