

# Anti-Zinc Finger FYVE-Type Containing 9 Recombinant Rabbit Monoclonal Antibody



**Catalog #: 2689**

## Aliases

ZFYVE9; Zinc Finger FYVE-Type Containing 9; SMADIP; SARA; PPP1R173; MADHIP; Protein Phosphatase 1, Regulatory Subunit 173; Zinc Finger FYVE Domain-Containing Protein 9; Zinc Finger, FYVE Domain Containing 9; Smad Anchor For Receptor Activation; Novel Serine Protease; NSP; MAD, Mothers Against Decapentaplegic Homolog (Drosophila) Interacting Protein, Receptor Activation Anchor; MAD, Mothers Against Decapentaplegic Homolog Interacting Protein, Receptor Activation Anchor; Mothers Against Decapentaplegic Homolog-Interacting Protein; Receptor Activation Anchor; MADH-Interacting Protein; Madh-Interacting Protein; HSARA

## Background

Gene Name: ZFYVE9

NCBI Gene Entry: [9372](#)

UniProt Entry: [O95405](#)

## Application Information

Molecular Weight: Predicted, 156 kDa; observed, 180 kDa

Clonality: Rabbit monoclonal antibody

Clone ID: 24GB1885

Species Reactivity: Human, mouse, rat

Applications Tested: Western blotting (WB), flow cytometry (FCM), immunocytochemistry (IC)

## Immunogen

A synthesized peptide derived from human ZFYVE9

## Isotype

Rabbit IgG

## Storage Buffer

Supplied in PBS (pH 7.4) containing 50% glycerol, and 0.02% sodium azide.

## Storage

Store at -20 °C for one year.

## Recommended Dilutions

Western Blotting (WB): 1:1,000-1:5,000

---

### SUPPORT

SUPPORT@GENUINBIOTECH.COM  
TEL: +1-540-855-7041

### ORDERS

SALES@GENUINBIOTECH.COM  
FAX: +1-540-855-7041

[WWW.GENUINBIOTECH.COM](http://WWW.GENUINBIOTECH.COM)

# Anti-Zinc Finger FYVE-Type Containing 9 Recombinant Rabbit Monoclonal Antibody

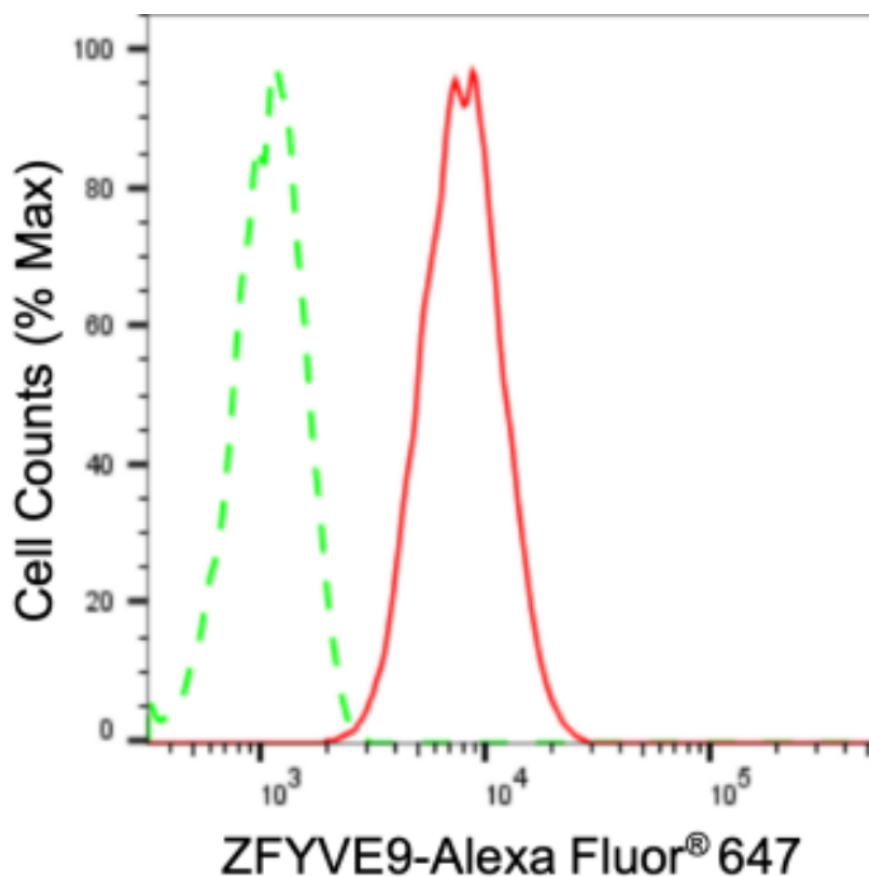
PAGE 2

Flow Cytometry (FCM): 1:2,000

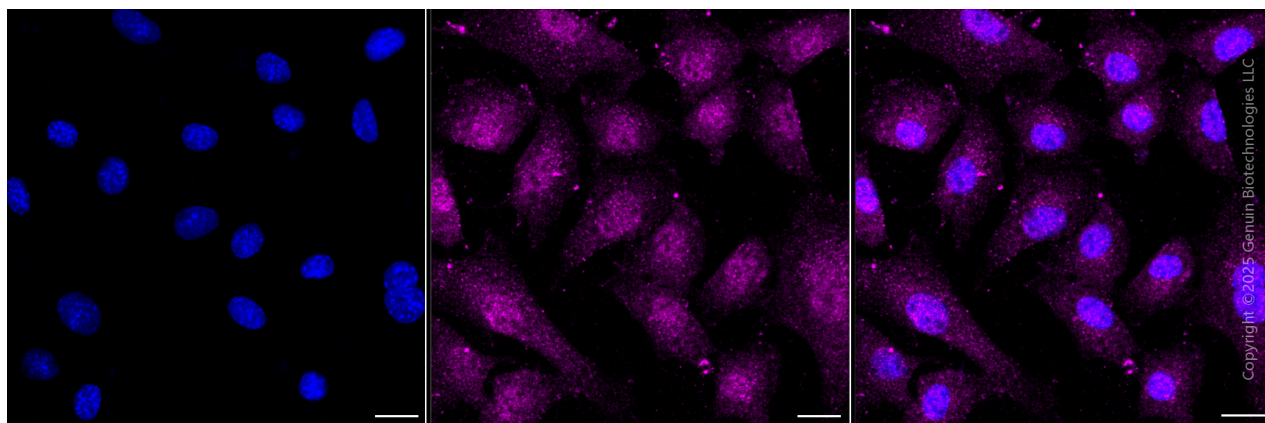
Immunocytochemistry (IC): 1:100-1:1,000

**Note:** This product is for research use only.

## Validation Data



Flow cytometric analysis of ZFYVE9 expression in C2C12 cells using anti-ZFYVE9 antibody (Cat#2689, 1:2,000). Green, isotype control; red, ZFYVE9.



### SUPPORT

SUPPORT@GENUINBIOTECH.COM  
TEL: +1-540-855-7041

### ORDERS

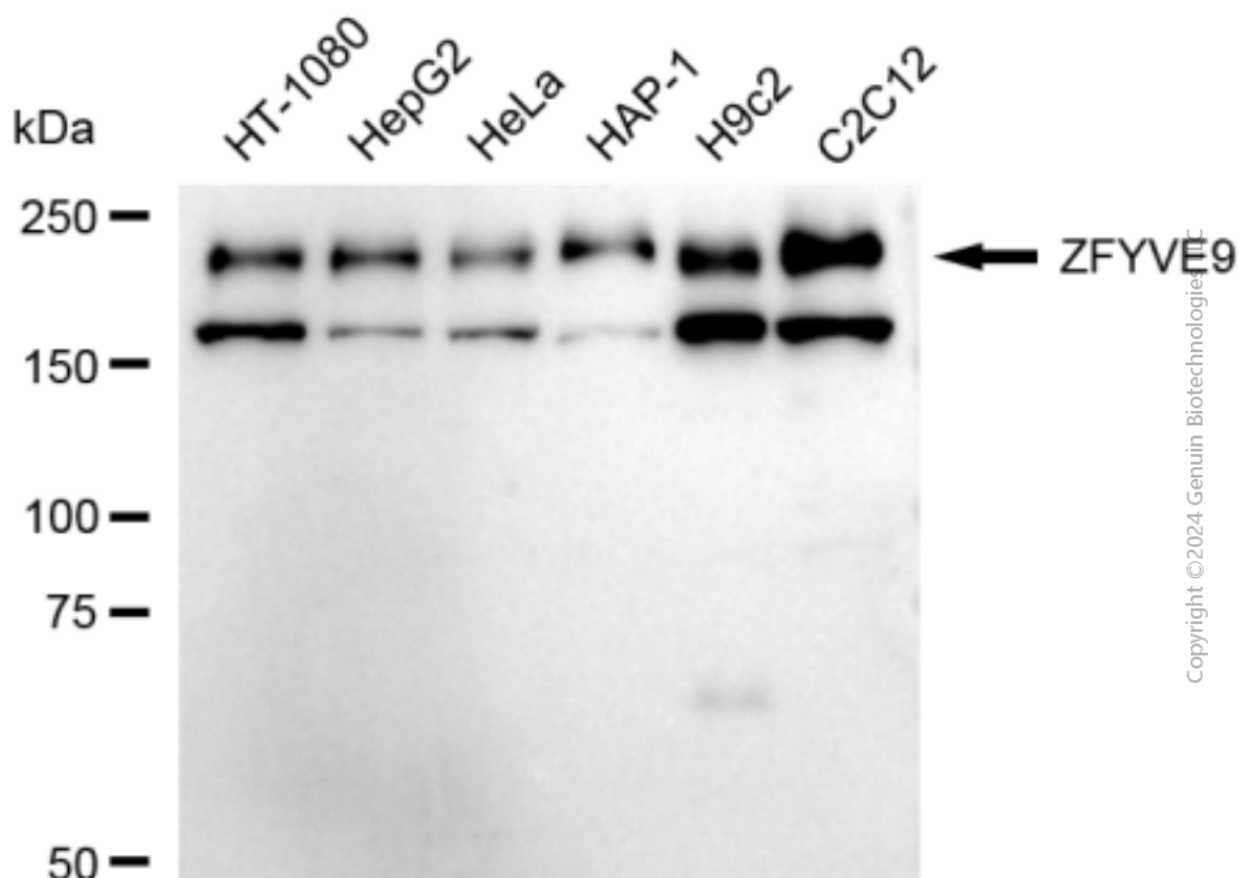
SALES@GENUINBIOTECH.COM  
FAX: +1-540-855-7041

WWW.GENUINBIOTECH.COM

## Anti-Zinc Finger FYVE-Type Containing 9 Recombinant Rabbit Monoclonal Antibody

PAGE 3

Immunocytochemical staining of C2C12 cells with anti-ZFYVE9 antibody (Cat#2689, 1:1,000) . Nuclei were stained blue with DAPI; ZFYVE9 was stained magenta with Alexa Fluor® 647. Images were taken using Leica stellaris 5. Protein abundance based on laser Intensity and Smart Gain□Medium. Scale bar, 20 μm.



Western blotting analysis using anti-ZFYVE9 antibody (Cat#2689). Total cell lysates (30 μg) from various cell lines were loaded and separated by SDS-PAGE. The blot was incubated with anti-ZFYVE9 antibody (Cat#2689, 1:5,000) and HRP-conjugated goat anti-rabbit secondary antibody (Cat#201, 1:20,000) respectively. Image was developed using FeQ™ ECL Substrate Kit (Cat#226).

### SUPPORT

SUPPORT@GENUINBIOTECH.COM  
TEL: +1-540-855-7041

### ORDERS

SALES@GENUINBIOTECH.COM  
FAX: +1-540-855-7041

WWW.GENUINBIOTECH.COM