

Anti-TRAM2 Recombinant Rabbit Monoclonal Antibody



Catalog #: 2694

Aliases

TRAM2; Translocation Associated Membrane Protein 2; KIAA0057; Translocating Chain-Associated Membrane Protein 2; TRAM-Like Protein

Background

Gene Name: TRAM2

NCBI Gene Entry: [9697](#)

UniProt Entry: [Q15035](#)

Application Information

Molecular Weight: Predicted, 43 kDa; observed, 43 kDa

Clonality: Rabbit monoclonal antibody

Clone ID: 24GB1960

Species Reactivity: Human, mouse, rat

Applications Tested: Western blotting (WB), flow cytometry (FCM), immunocytochemistry (IC)

Immunogen

A synthesized peptide derived from human TRAM2

Isotype

Rabbit IgG

Storage Buffer

Supplied in PBS (pH 7.4) containing 50% glycerol, and 0.02% sodium azide.

Storage

Store at -20 °C for one year.

Recommended Dilutions

Western Blotting (WB): 1:1,000-1:5,000

Flow Cytometry (FCM): 1:2,000

Immunocytochemistry (IC): 1:100-1:1,000

Note: This product is for research use only.

Validation Data

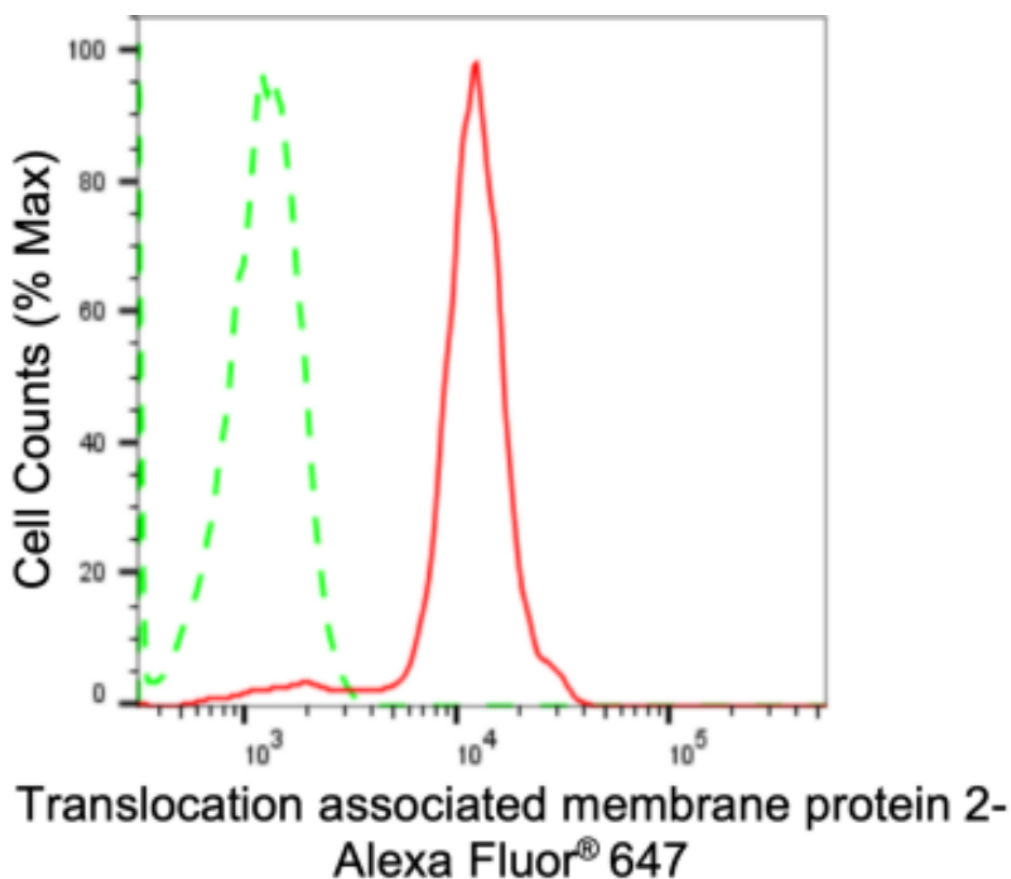
SUPPORT

SUPPORT@GENUINBIOTECH.COM
TEL: +1-540-855-7041

ORDERS

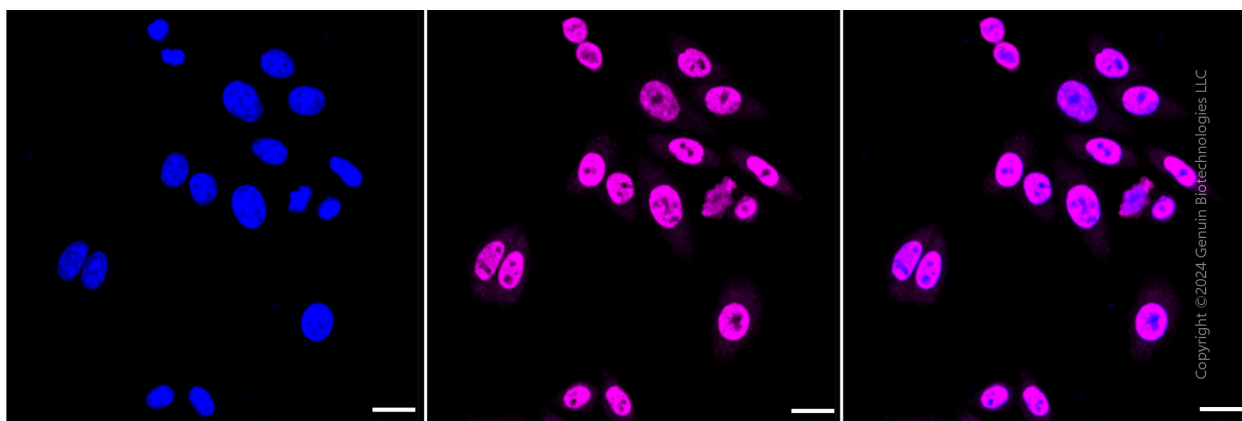
SALES@GENUINBIOTECH.COM
FAX: +1-540-855-7041

WWW.GENUINBIOTECH.COM



Copyright ©2024 Genuin Biotechnologies LLC

Flow cytometric analysis of Translocation associated membrane protein 2 expression in HepG2 cells using anti-Translocation associated membrane protein 2 antibody (Cat#2694, 1:2,000). Green, isotype control; red, Translocation associated membrane protein 2.



Immunocytochemical staining of HepG2 cells with anti-Translocation associated membrane protein 2 antibody (Cat#2694, 1:1,000). Nuclei were stained blue with DAPI; Translocation associated membrane protein 2 was stained magenta with Alexa Fluor® 647. Images were taken using Leica stellaris 5. Protein abundance based on laser Intensity and smart gain: High. Scale bar: 20 μ m.

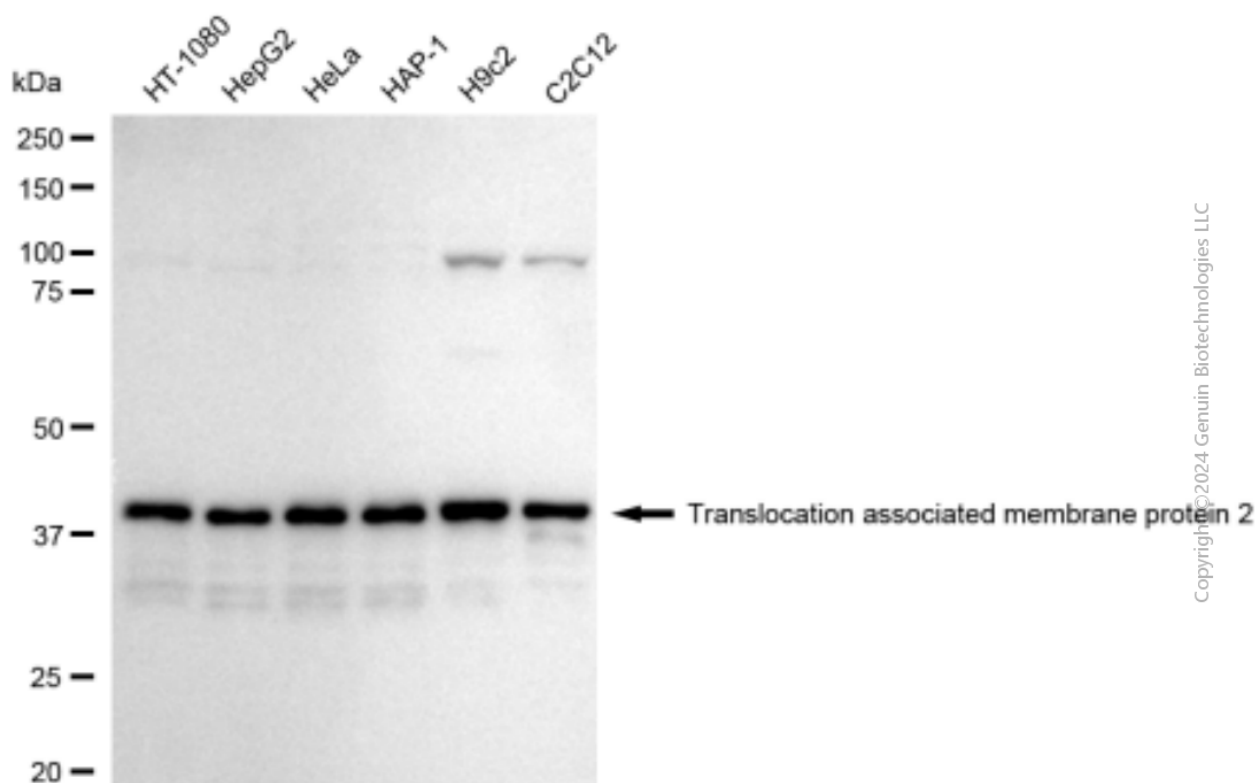
SUPPORT

SUPPORT@GENUINBIOTECH.COM
TEL: +1-540-855-7041

ORDERS

SALES@GENUINBIOTECH.COM
FAX: +1-540-855-7041

WWW.GENUINBIOTECH.COM



Western blotting analysis using anti-Translocation associated membrane protein 2 antibody (Cat#2694). Total cell lysates (30 μ g) from various cell lines were loaded and separated by SDS-PAGE. The blot was incubated with anti-Translocation associated membrane protein 2 antibody (Cat#2694, 1:5,000) and HRP-conjugated goat anti-rabbit secondary antibody (Cat#201, 1:20,000) respectively. Image was developed using FeQ™ ECL Substrate Kit (Cat#226).