

Anti-Synaptophysin Recombinant Rabbit Monoclonal Antibody



Catalog #: 2695

Aliases

SYP; Synaptophysin; MRX96; Major Synaptic Vesicle Protein P38; MRXSYP; XLID96

Background

Gene Name: SYP

NCBI Gene Entry: [6855](#)

UniProt Entry: [P08247](#)

Application Information

Molecular Weight: Predicted, 34 kDa; observed, 45 kDa

Clonality: Rabbit monoclonal antibody

Clone ID: 24GB1970

Species Reactivity: Human, mouse, rat

Applications Tested: Western blotting (WB), flow cytometry (FCM), immunocytochemistry (IC)

Immunogen

A synthesized peptide derived from human Synaptophysin

Isotype

Rabbit IgG

Storage Buffer

Supplied in PBS (pH 7.4) containing 50% glycerol, and 0.02% sodium azide.

Storage

Store at -20 °C for one year.

Recommended Dilutions

Western Blotting (WB): 1:2,000-1:10,000

Flow Cytometry (FCM): 1:2,000

Immunocytochemistry (IC): 1:100-1:1,000

Note: This product is for research use only.

Validation Data

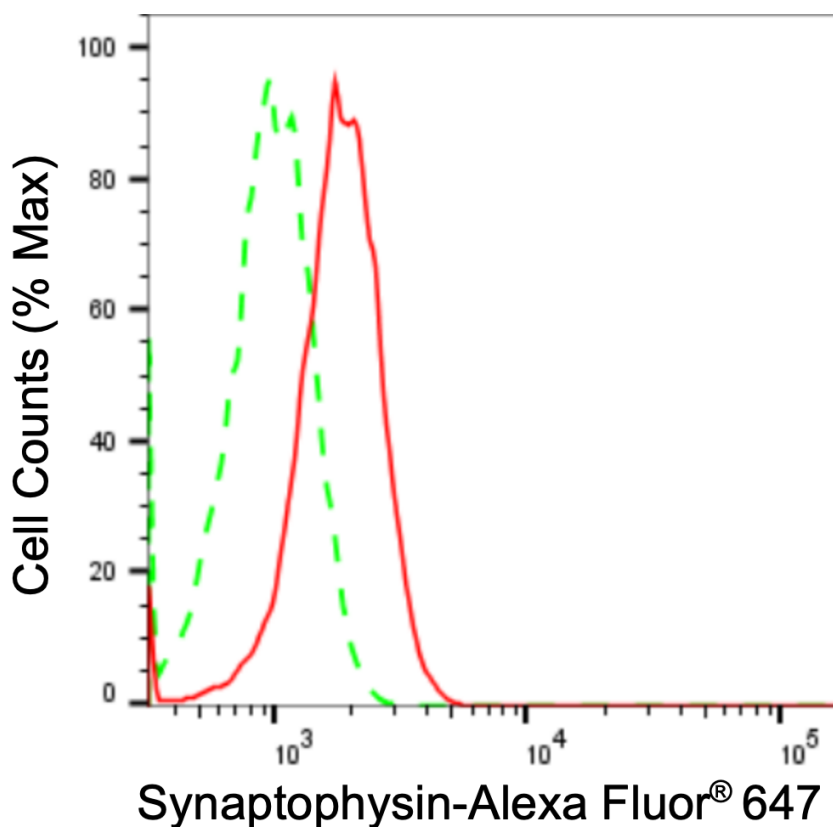
SUPPORT

SUPPORT@GENUINBIOTECH.COM
TEL: +1-540-855-7041

ORDERS

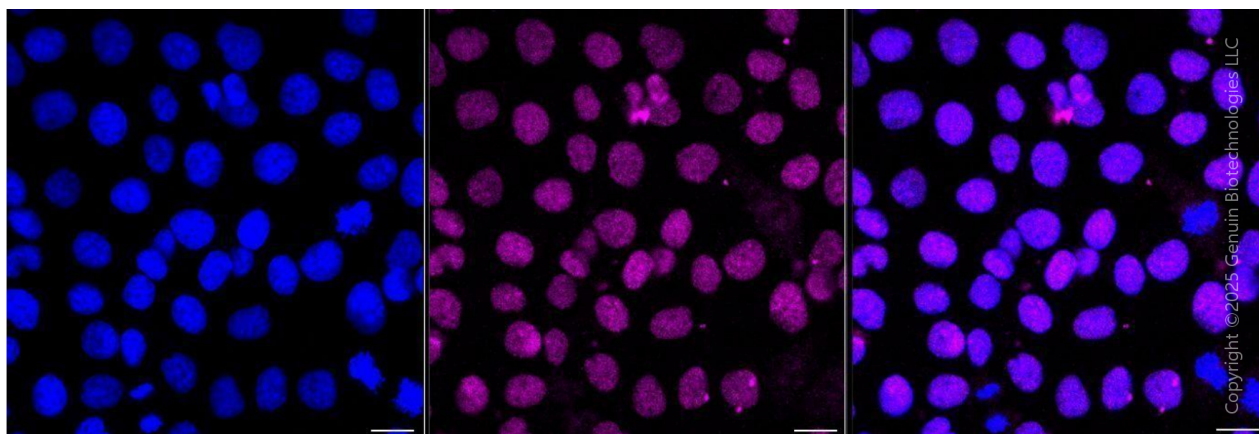
SALES@GENUINBIOTECH.COM
FAX: +1-540-855-7041

WWW.GENUINBIOTECH.COM



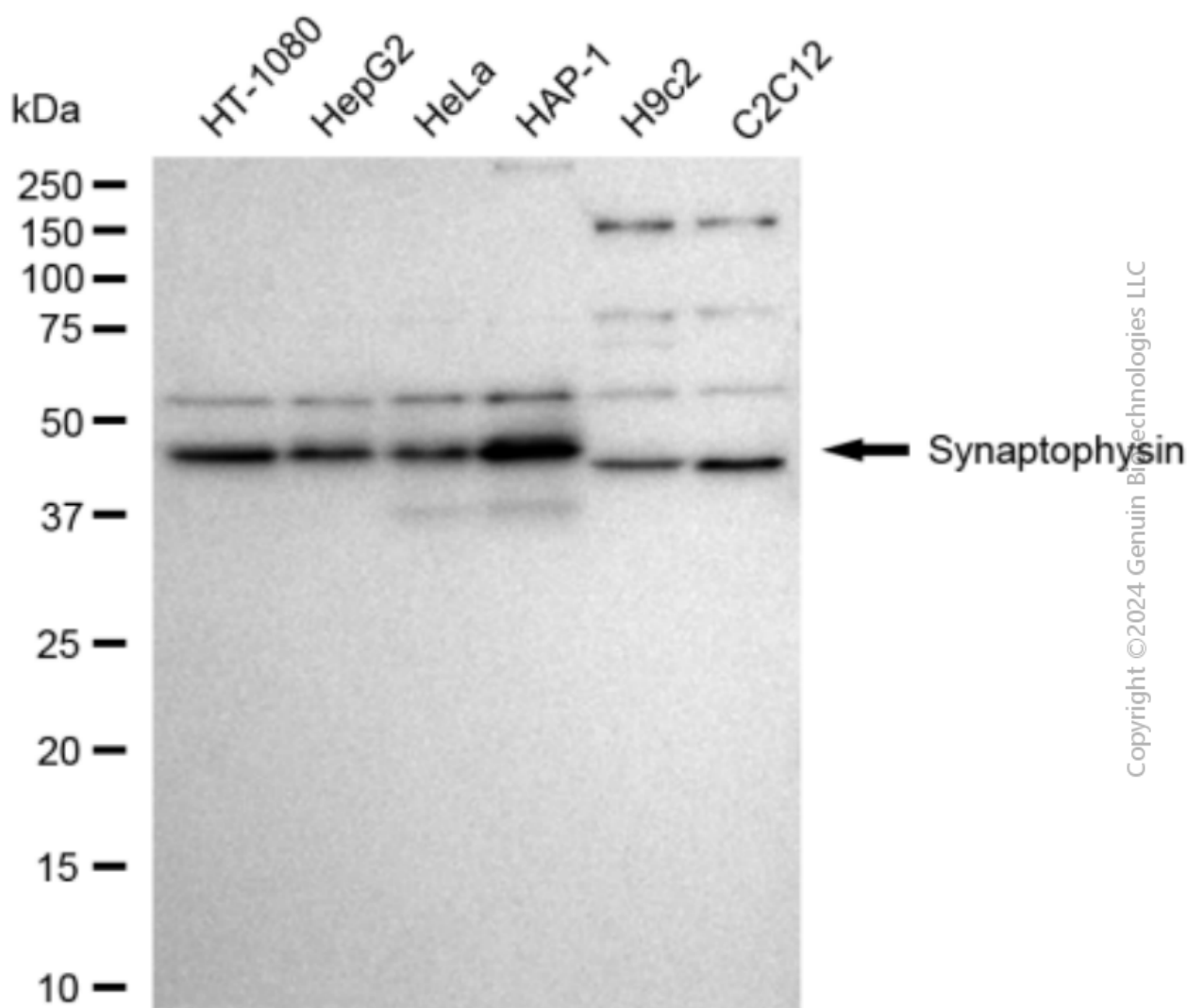
Copyright © 2024 Genuin Biotechnologies LLC

Flow cytometric analysis of Synaptophysin expression in HT-1080 cells using anti-Synaptophysin antibody (Cat#2695, 1:2,000). Green, isotype control; red, Synaptophysin.



Copyright © 2025 Genuin Biotechnologies LLC

Immunocytochemical staining of HT-1080 cells with anti-Synaptophysin antibody (Cat#2695, 1:1,000). Nuclei were stained blue with DAPI; Synaptophysin was stained magenta with Alexa Fluor® 647. Images were taken using Leica stellaris 5. Protein abundance based on laser Intensity and smart gain: Medium. Scale bar, 20 μ m.



Western blotting analysis using anti-synaptophysin antibody (Cat#2695). Total cell lysates (30 μ g) from various cell lines were loaded and separated by SDS-PAGE. The blot was incubated with anti-synaptophysin antibody (Cat#2695, 1:10,000) and HRP-conjugated goat anti-rabbit secondary antibody (Cat#201, 1:20,000) respectively. Image was developed using FeQ™ ECL Substrate Kit (Cat#226).