

Anti-UCHL3 Recombinant Rabbit Monoclonal Antibody



Catalog #: 2696

Aliases

UCHL3; Ubiquitin C-Terminal Hydrolase L3; Ubiquitin Carboxyl-Terminal Esterase L3 (Ubiquitin Thiolesterase); Ubiquitin Carboxyl-Terminal Hydrolase Isozyme L3; Ubiquitin Thioesterase L3; Ubiquitin Thiolesterase; UCH-L3; Testicular Tissue Protein Li 221; EC 3.4.19.12

Background

Gene Name: UCHL3

NCBI Gene Entry: [7347](#)

UniProt Entry: [P15374](#)

Application Information

Molecular Weight: Predicted, 26 kDa; observed, 26 kDa

Clonality: Rabbit monoclonal antibody

Clone ID: 24GB1975

Species Reactivity: Human, mouse, rat

Applications Tested: Western blotting (WB), flow cytometry (FCM), immunocytochemistry (IC)

Immunogen

A synthesized peptide derived from human UCHL3

Isotype

Rabbit IgG

Storage Buffer

Supplied in PBS (pH 7.4) containing 50% glycerol, and 0.02% sodium azide.

Storage

Store at -20 °C for one year.

Recommended Dilutions

Western Blotting (WB): 1:1,000-1:5,000

Flow Cytometry (FCM): 1:2,000

Immunocytochemistry (IC): 1:100-1:1,000

Note: This product is for research use only.

SUPPORT

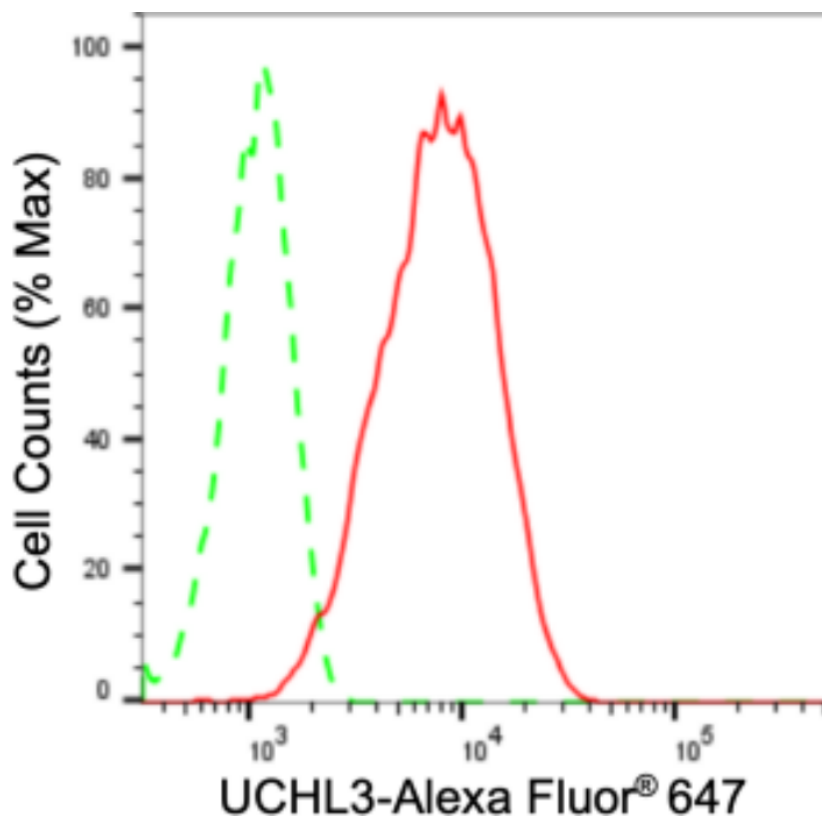
SUPPORT@GENUINBIOTECH.COM
TEL: +1-540-855-7041

ORDERS

SALES@GENUINBIOTECH.COM
FAX: +1-540-855-7041

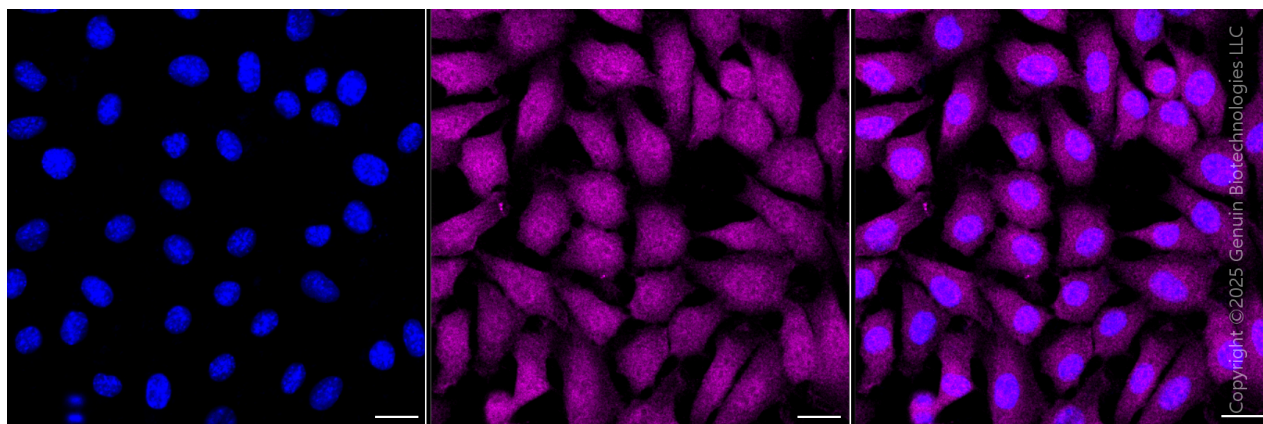
WWW.GENUINBIOTECH.COM

Validation Data



Copyright ©2024 Genuin Biotechnologies LLC

Flow cytometric analysis of UCHL3 expression in C2C12 cells using anti-UCHL3 antibody (Cat#2696, 1:2,000). Green, isotype control; red, UCHL3.



Copyright ©2025 Genuin Biotechnologies LLC

Immunocytochemical staining of C2C12 cells with anti-UCHL3 antibody (Cat#2696, 1:1,000). Nuclei were stained blue with DAPI; UCHL3 was stained magenta with Alexa Fluor® 647. Images were taken using Leica stellaris 5. Protein abundance based on laser Intensity and Smart Gain □ Medium. Scale bar, 20 μm.

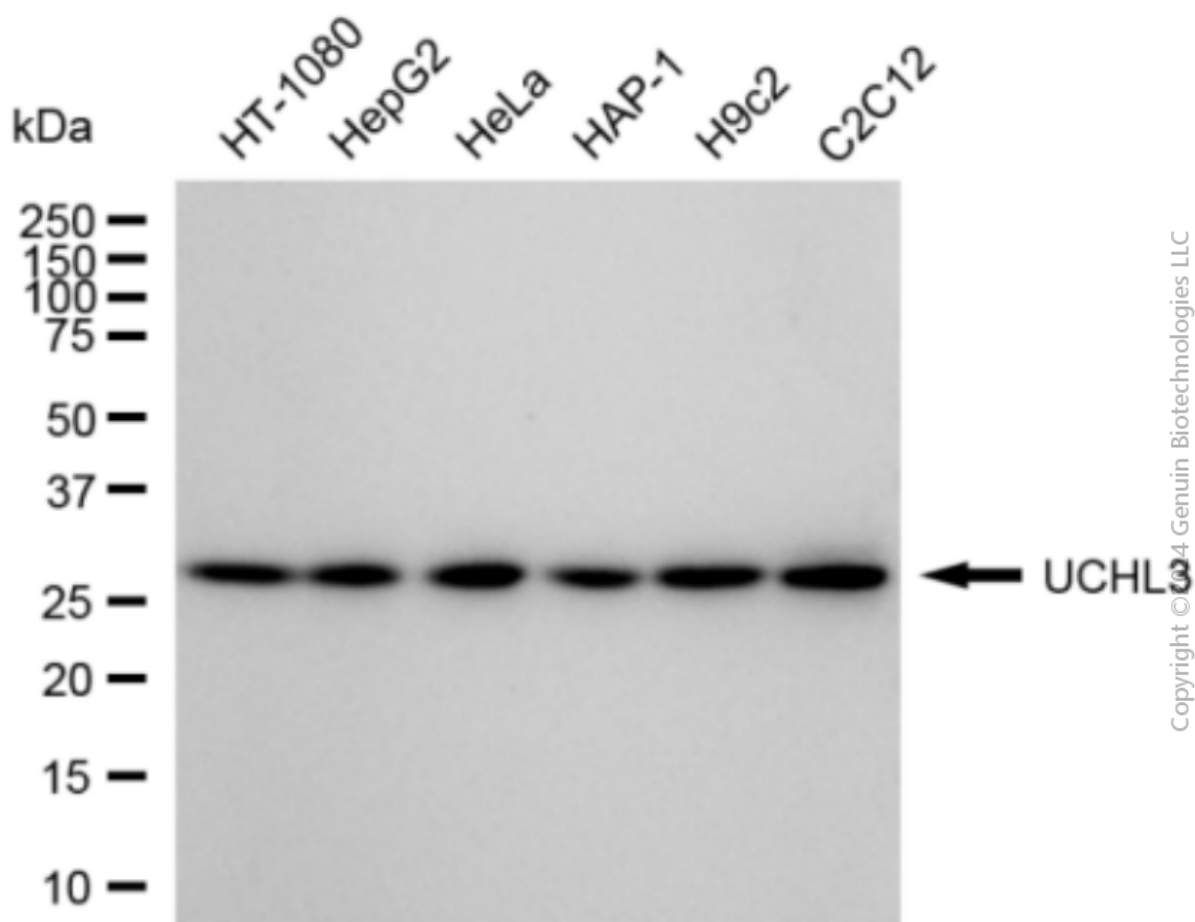
SUPPORT

SUPPORT@GENUINBIOTECH.COM
TEL: +1-540-855-7041

ORDERS

SALES@GENUINBIOTECH.COM
FAX: +1-540-855-7041

WWW.GENUINBIOTECH.COM



Western blotting analysis using anti-UCHL3 antibody (Cat#2696). Total cell lysates (30 μ g) from various cell lines were loaded and separated by SDS-PAGE. The blot was incubated with anti-UCHL3 antibody (Cat#2696, 1:5,000) and HRP-conjugated goat anti-rabbit secondary antibody (Cat#201, 1:20,000) respectively. Image was developed using FeQ™ ECL Substrate Kit (Cat#226).