

Anti-Dihydropyrimidinase like 4 Recombinant Rabbit Monoclonal Antibody



Catalog #: 2697

Aliases

DPYSL4; Dihydropyrimidinase Like 4; ULIP4; DRP-4; CRMP3; Dihydropyrimidinase-Related Protein 4; Collapsin Response Mediator Protein 3; UNC33-Like Phosphoprotein 4; CRMP-3; ULIP-4; Dihydropyrimidinase-Like 4

Background

Gene Name: DPYSL4

NCBI Gene Entry: [10570](#)

UniProt Entry: [O14531](#)

Application Information

Molecular Weight: Predicted, 62 kDa; observed, 62 kDa

Clonality: Rabbit monoclonal antibody

Clone ID: 23GB1510

Species Reactivity: Human, mouse, rat

Applications Tested: Western blotting (WB), flow cytometry (FCM), immunocytochemistry (IC)

Immunogen

A synthesized peptide derived from human CRMP3

Isotype

Rabbit IgG

Storage Buffer

Supplied in PBS (pH 7.4) containing 50% glycerol, and 0.02% sodium azide.

Storage

Store at -20 °C for one year.

Recommended Dilutions

Western Blotting (WB): 1:1,000-1:5,000

Flow Cytometry (FCM): 1:2,000

Immunocytochemistry (IC): 1:100-1:1,000

Note: This product is for research use only.

SUPPORT

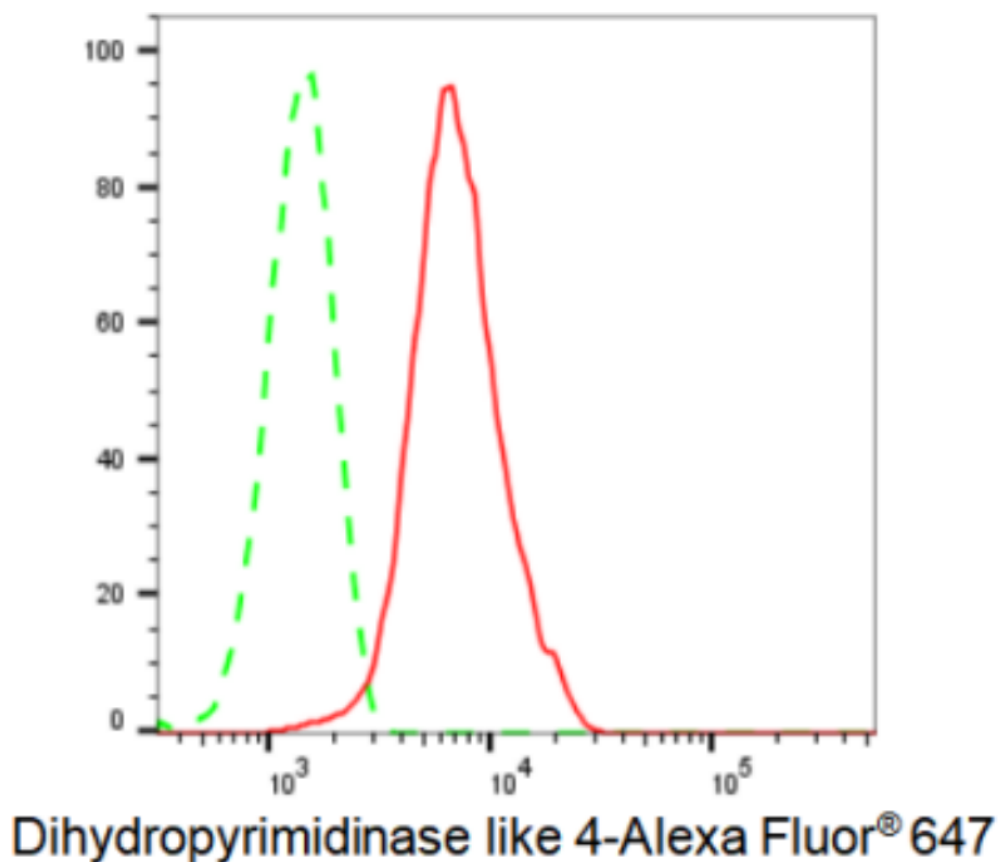
SUPPORT@GENUINBIOTECH.COM
TEL: +1-540-855-7041

ORDERS

SALES@GENUINBIOTECH.COM
FAX: +1-540-855-7041

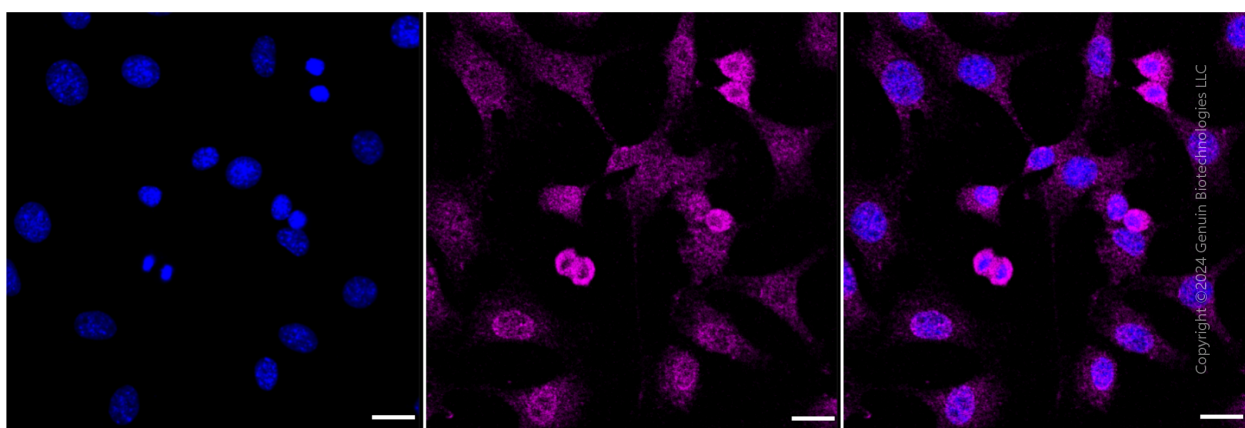
WWW.GENUINBIOTECH.COM

Validation Data



Copyright ©2024 Genuin Biotechnologies LLC

Flow cytometric analysis of Dihydropyrimidinase like 4 expression in C2C12 cells using Dihydropyrimidinase like 4 antibody (Cat#2697, 1:2,000). Green, isotype control; red, Dihydropyrimidinase like 4.



Copyright ©2024 Genuin Biotechnologies LLC

Immunocytochemical staining of HeLa cells with Dihydropyrimidinase like 4 antibody (Cat#2697, 1:1,000). Nuclei were stained blue with DAPI; Dihydropyrimidinase like 4 was stained magenta with Alexa Fluor® 647. Images were taken using Leica stellaris 5. Protein abundance based on laser Intensity and smart gain: Low. Scale bar: 20 μ m.

SUPPORT

SUPPORT@GENUINBIOTECH.COM
TEL: +1-540-855-7041

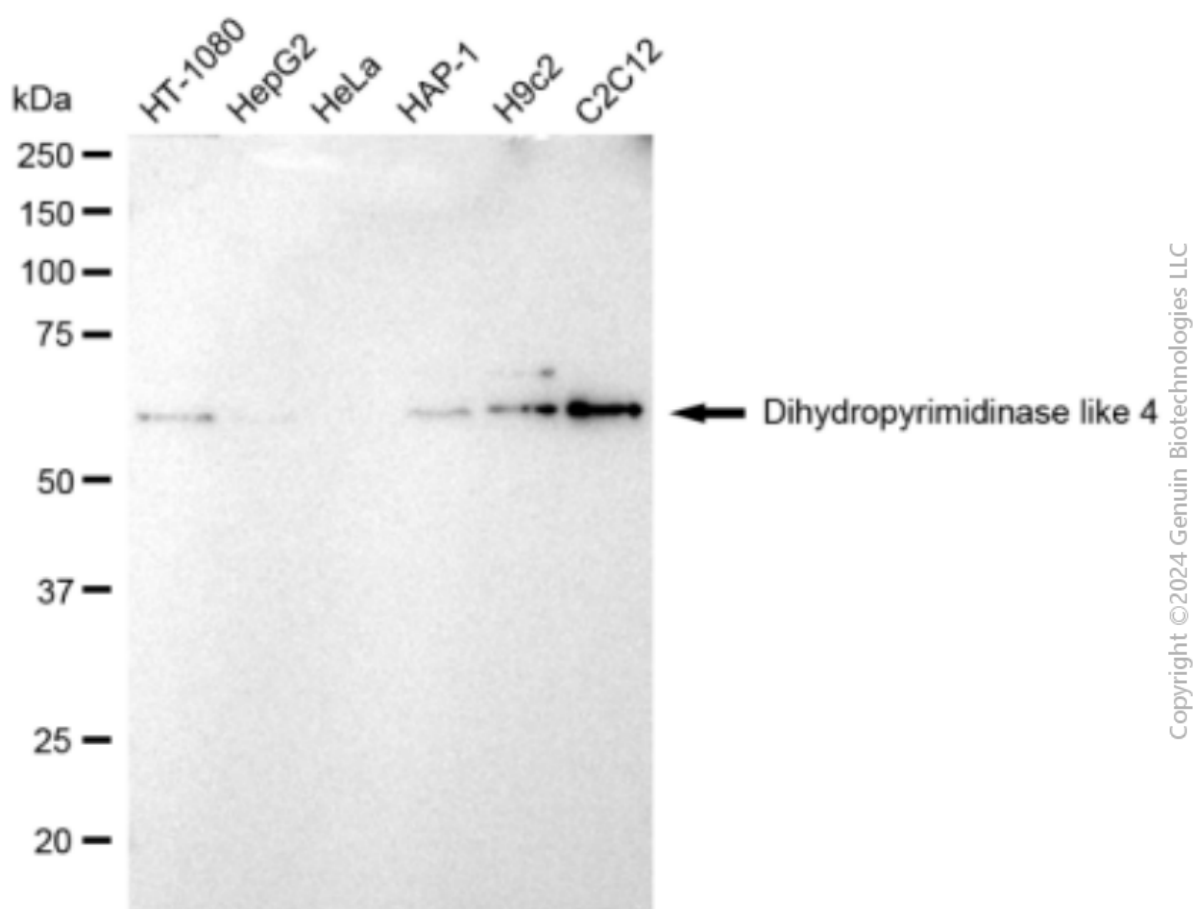
ORDERS

SALES@GENUINBIOTECH.COM
FAX: +1-540-855-7041

WWW.GENUINBIOTECH.COM

Anti-Dihydropyrimidinase like 4 Recombinant Rabbit Monoclonal Antibody

PAGE 3



Western blotting analysis using anti-Dihydropyrimidinase like 4 antibody (Cat#2697). Total cell lysates (30 μ g) from various cell lines were loaded and separated by SDS-PAGE. The blot was incubated with anti-Dihydropyrimidinase like 4 antibody (Cat#2697, 1:5,000) and HRP-conjugated goat anti-rabbit secondary antibody (Cat#201, 1:20,000) respectively. Image was developed using FeQ™ ECL Substrate Kit (Cat#226).

SUPPORT

SUPPORT@GENUINBIOTECH.COM
TEL: +1-540-855-7041

ORDERS

SALES@GENUINBIOTECH.COM
FAX: +1-540-855-7041

WWW.GENUINBIOTECH.COM