

# Anti-Thrombomodulin Recombinant Rabbit Monoclonal Antibody



**Catalog #: 2698**

## Aliases

THBD; Thrombomodulin; THRM; Fetomodulin; BDCA-3; CD141; CD141 Antigen; TM; THPH12; AHUS6;BDCA3

## Background

Gene Name: THBD

NCBI Gene Entry: [7056](#)

UniProt Entry: [P07204](#)

## Application Information

Molecular Weight: Predicted, 60 kDa; observed, 50 kDa

Clonality: Rabbit monoclonal antibody

Clone ID: 24GB1980

Species Reactivity: Human, mouse, rat

Applications Tested: Western blotting (WB), immunocytochemistry (IC)

## Immunogen

A synthesized peptide derived from human Thrombomodulin

## Isotype

Rabbit IgG

## Storage Buffer

Supplied in PBS (pH 7.4) containing 50% glycerol, and 0.02% sodium azide.

## Storage

Store at -20 °C for one year.

## Recommended Dilutions

Western Blotting (WB): 1:1,000-1:5,000

Immunocytochemistry (IC): 1:100-1:1,000

**Note:** This product is for research use only.

## Validation Data

---

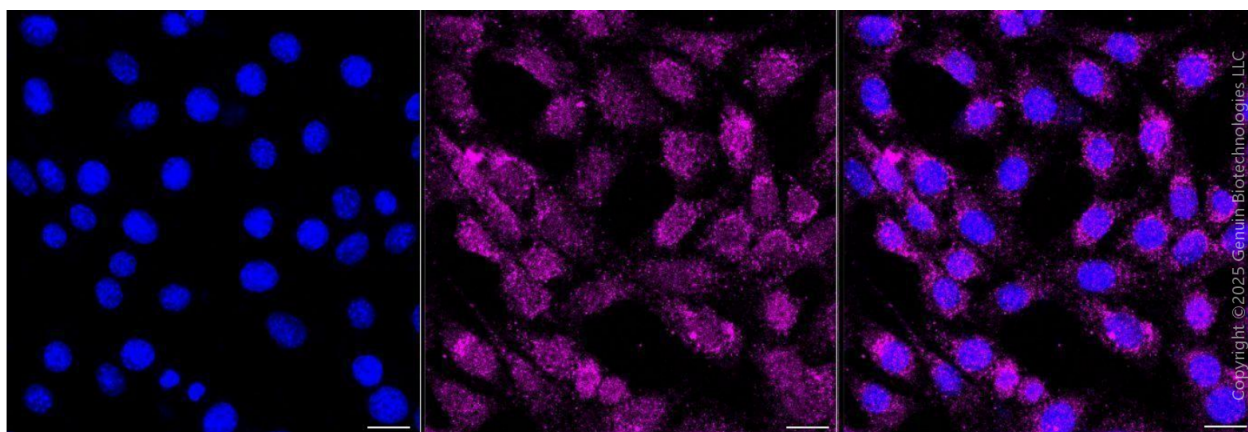
### SUPPORT

SUPPORT@GENUINBIOTECH.COM  
TEL: +1-540-855-7041

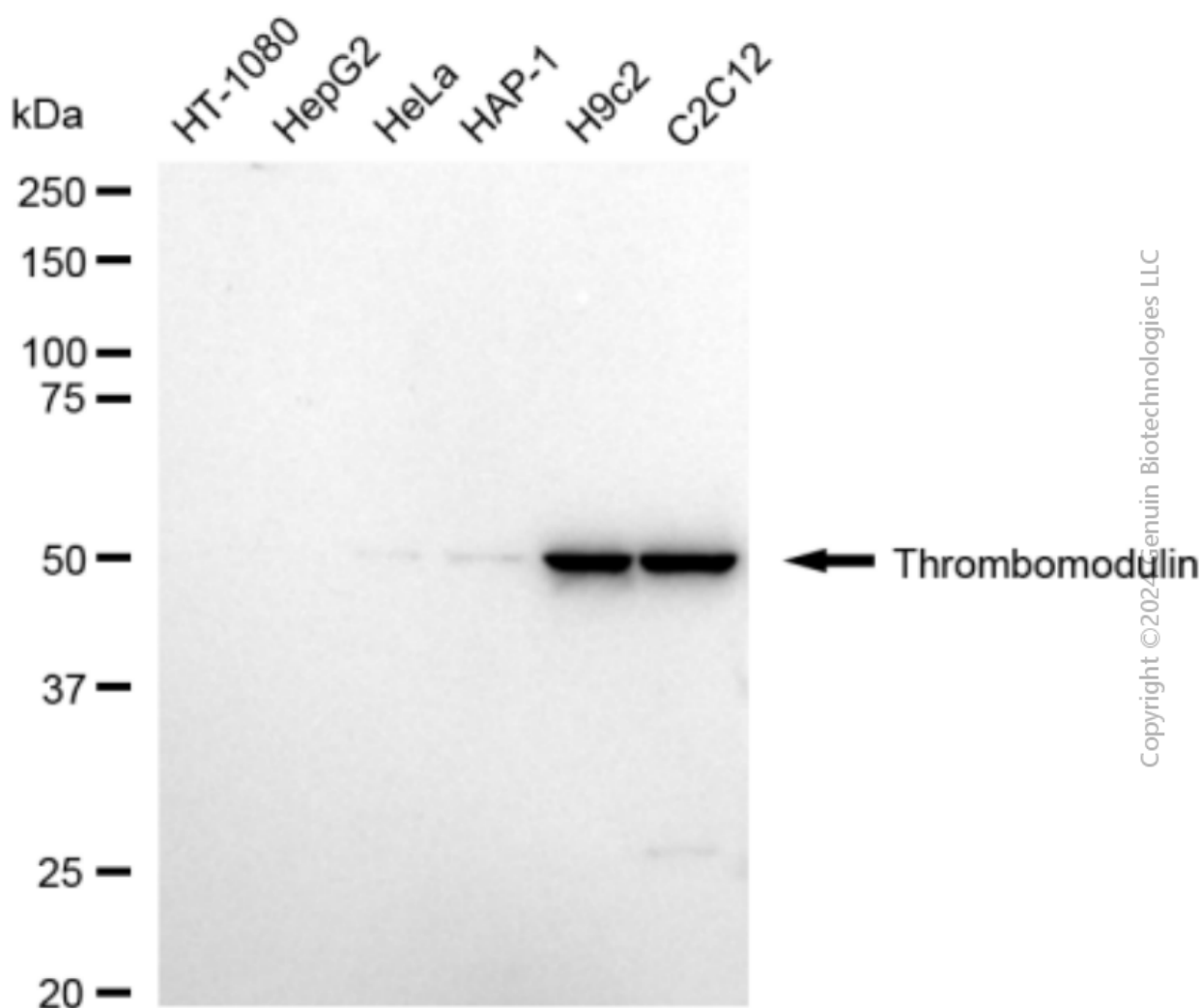
### ORDERS

SALES@GENUINBIOTECH.COM  
FAX: +1-540-855-7041

[WWW.GENUINBIOTECH.COM](http://WWW.GENUINBIOTECH.COM)



Immunocytochemical staining of C2C12 cells with anti-Thrombomodulin antibody (Cat#2698, 1:1,000). Nuclei were stained blue with DAPI; Thrombomodulin was stained magenta with Alexa Fluor® 647. Images were taken using Leica stellaris 5. Protein abundance based on laser Intensity and smart gain: Medium. Scale bar, 20  $\mu$ m.



## SUPPORT

SUPPORT@GENUINBIOTECH.COM  
TEL: +1-540-855-7041

## ORDERS

SALES@GENUINBIOTECH.COM  
FAX: +1-540-855-7041

[WWW.GENUINBIOTECH.COM](http://WWW.GENUINBIOTECH.COM)

## **Anti-Thrombomodulin Recombinant Rabbit Monoclonal Antibody**

PAGE 3

Western blotting analysis using anti-Thrombomodulin antibody (Cat#2698). Total cell lysates (30 µg) from various cell lines were loaded and separated by SDS-PAGE. The blot was incubated with anti-Thrombomodulin antibody (Cat#2698, 1:5,000) and HRP-conjugated goat anti-rabbit secondary antibody (Cat#201, 1:20,000) respectively. Image was developed using FeQ™ ECL Substrate Kit (Cat#226).

---

### **SUPPORT**

SUPPORT@GENUINBIOTECH.COM  
TEL: +1-540-855-7041

### **ORDERS**

SALES@GENUINBIOTECH.COM  
FAX: +1-540-855-7041

**WWW.GENUINBIOTECH.COM**