

Anti-SHB Recombinant Rabbit Monoclonal Antibody



Catalog #: 2701

Aliases

SHB; SH2 Domain Containing Adaptor Protein B; SHB (Src Homology 2 Domain Containing) Adaptor Protein B; Src Homology 2 Domain Containing Adaptor Protein B; SHB Adaptor Protein (A Src Homology 2 Protein); SH2 Domain-Containing Adapter Protein B; BA3J10.2

Background

Gene Name: SHB

NCBI Gene Entry: [6461](#)

UniProt Entry: [Q15464](#)

Application Information

Molecular Weight: Predicted, 55 kDa; observed, 55 kDa

Clonality: Rabbit monoclonal antibody

Clone ID: 24GB2010

Species Reactivity: Human, mouse, rat

Applications Tested: Western blotting (WB)

Immunogen

A synthesized peptide derived from human SHB

Isotype

Rabbit IgG

Storage Buffer

Supplied in PBS (pH 7.4) containing 50% glycerol, and 0.02% sodium azide.

Storage

Store at -20 °C for one year.

Recommended Dilutions

Western Blotting (WB): 1:1,000-1:5,000

Note: This product is for research use only.

Validation Data

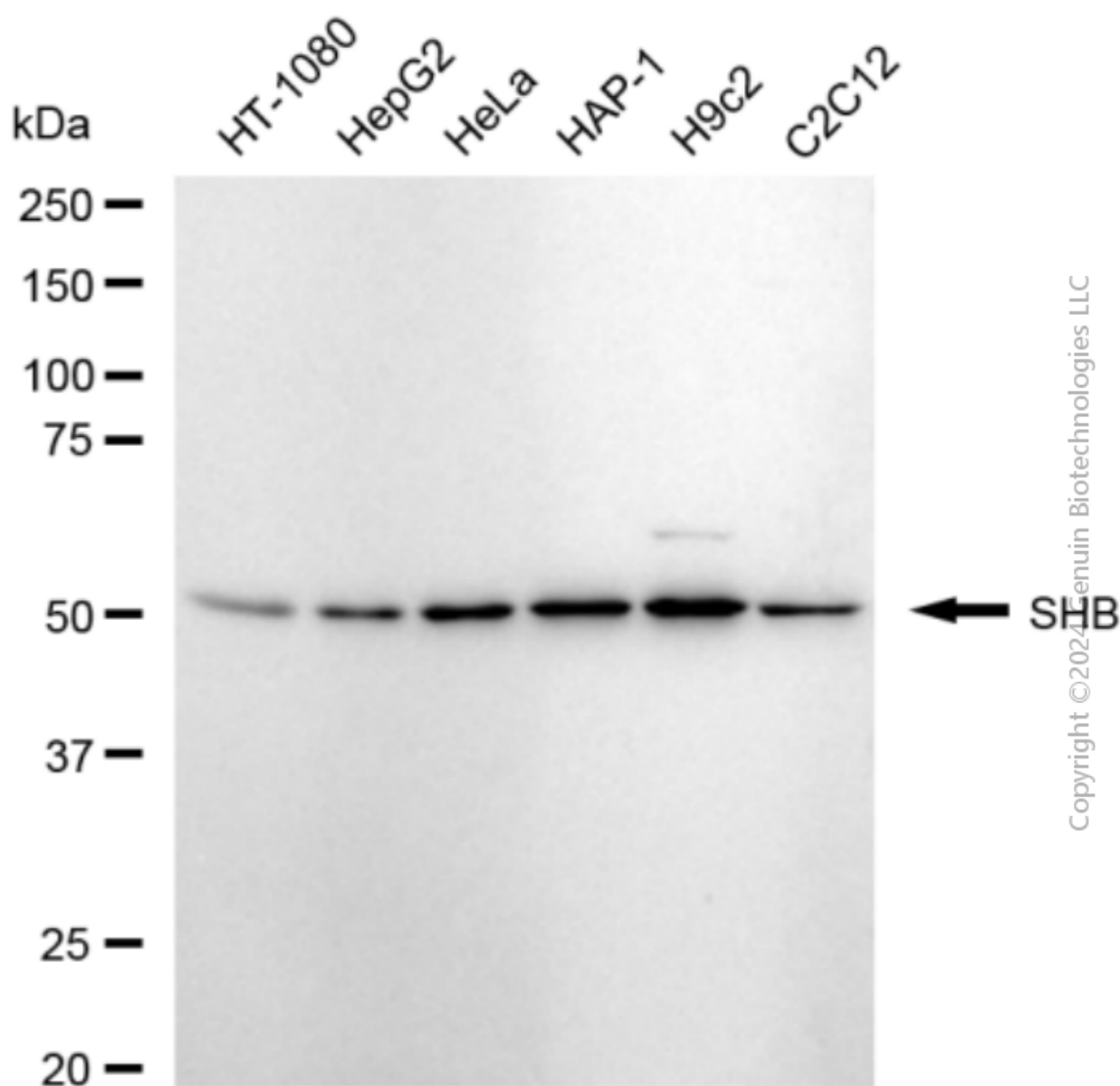
SUPPORT

SUPPORT@GENUINBIOTECH.COM
TEL: +1-540-855-7041

ORDERS

SALES@GENUINBIOTECH.COM
FAX: +1-540-855-7041

WWW.GENUINBIOTECH.COM



Western blotting analysis using anti-SHB antibody (Cat#2701). Total cell lysates (30 µg) from various cell lines were loaded and separated by SDS-PAGE. The blot was incubated with anti-SHB antibody (Cat#2701, 1:5,000) and HRP-conjugated goat anti-rabbit secondary antibody (Cat#201, 1:20,000) respectively. Image was developed using FeQ™ ECL Substrate Kit (Cat#226).