

Anti-Tryptophan Hydroxylase 1 Recombinant Rabbit Monoclonal Antibody



Catalog #: 2702

Aliases

TPH1; Tryptophan Hydroxylase 1; TPRH; Tryptophan Hydroxylase (Tryptophan 5-Monooxygenase); Tryptophan 5-Monooxygenase 1; Tryptophan 5-Hydroxylase 1; EC 1.14.16.4; TRPH; TPH; Indoleacetic Acid-5-Hydroxylase; Tryptophan 5-Monooxygenase; L-Tryptophan Hydroxylase; EC 1.14.16

Background

Gene Name: TPH1

NCBI Gene Entry: [7166](#)

UniProt Entry: [P17752](#)

Application Information

Molecular Weight: Predicted, 51 kDa; observed, 70 kDa

Clonality: Rabbit monoclonal antibody

Clone ID: 24GB2030

Species Reactivity: Human, mouse, rat

Applications Tested: Western blotting (WB), flow cytometry (FCM), immunocytochemistry (IC)

Immunogen

A synthesized peptide derived from human TPH1

Isotype

Rabbit IgG

Storage Buffer

Supplied in PBS (pH 7.4) containing 50% glycerol, and 0.02% sodium azide.

Storage

Store at -20 °C for one year.

Recommended Dilutions

Western Blotting (WB): 1:1,000-1:5,000

Flow Cytometry (FCM): 1:2,000

Immunocytochemistry (IC): 1:100-1:1,000

SUPPORT

SUPPORT@GENUINBIOTECH.COM
TEL: +1-540-855-7041

ORDERS

SALES@GENUINBIOTECH.COM
FAX: +1-540-855-7041

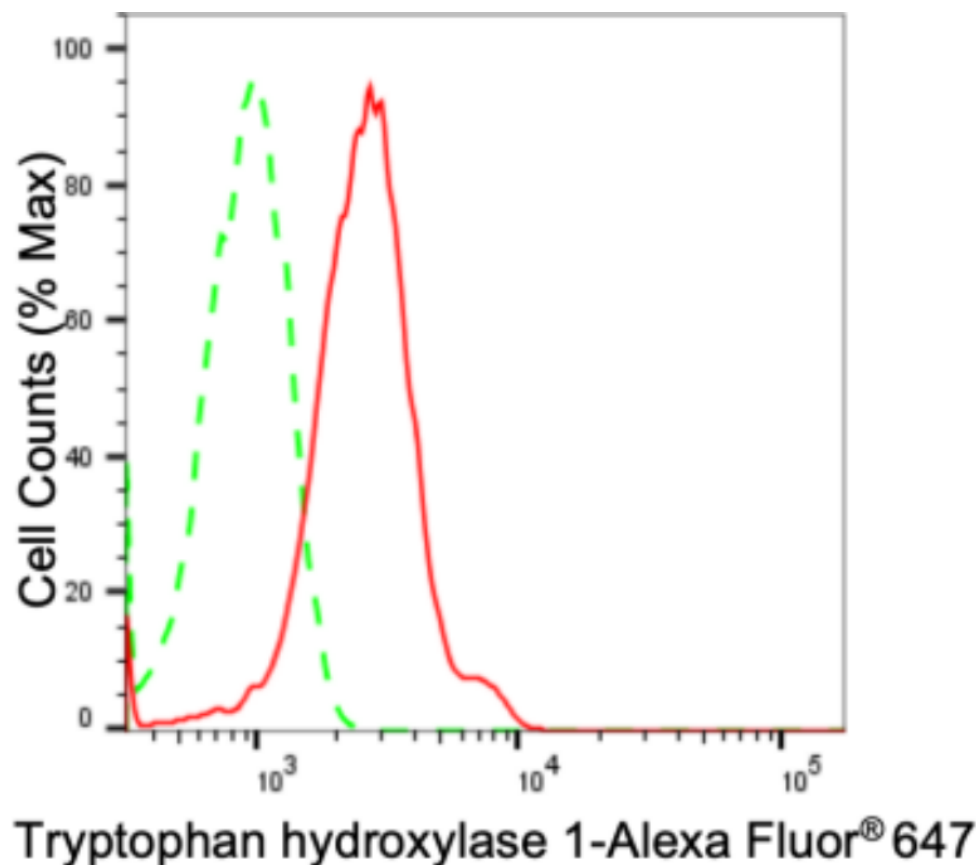
WWW.GENUINBIOTECH.COM

Anti-Tryptophan Hydroxylase 1 Recombinant Rabbit Monoclonal Antibody

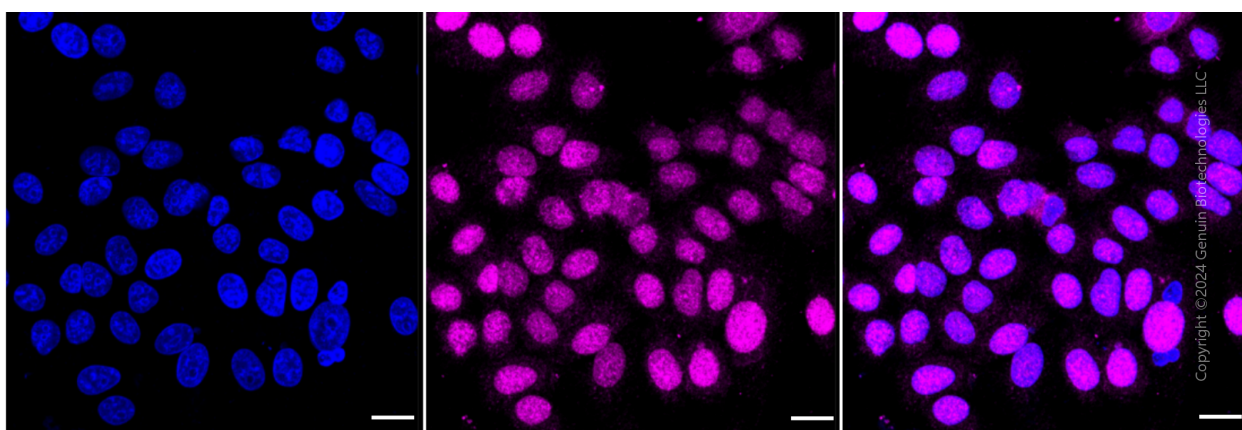
PAGE 2

Note: This product is for research use only.

Validation Data



Flow cytometric analysis of Tryptophan hydroxylase 1 expression in HepG2 cells using anti-Tryptophan hydroxylase 1 antibody (Cat#2702, 1:2,000). Green, isotype control; red, Tryptophan hydroxylase 1.



Immunocytochemical staining of HepG2 cells with anti-Tryptophan hydroxylase 1 antibody (Cat#2702, 1:1,000). Nuclei were stained blue with DAPI; Tryptophan hydroxylase 1 was stained magenta with Alexa Fluor® 647. Images were taken using Leica stellaris 5. Protein abundance

SUPPORT

SUPPORT@GENUINBIOTECH.COM
TEL: +1-540-855-7041

ORDERS

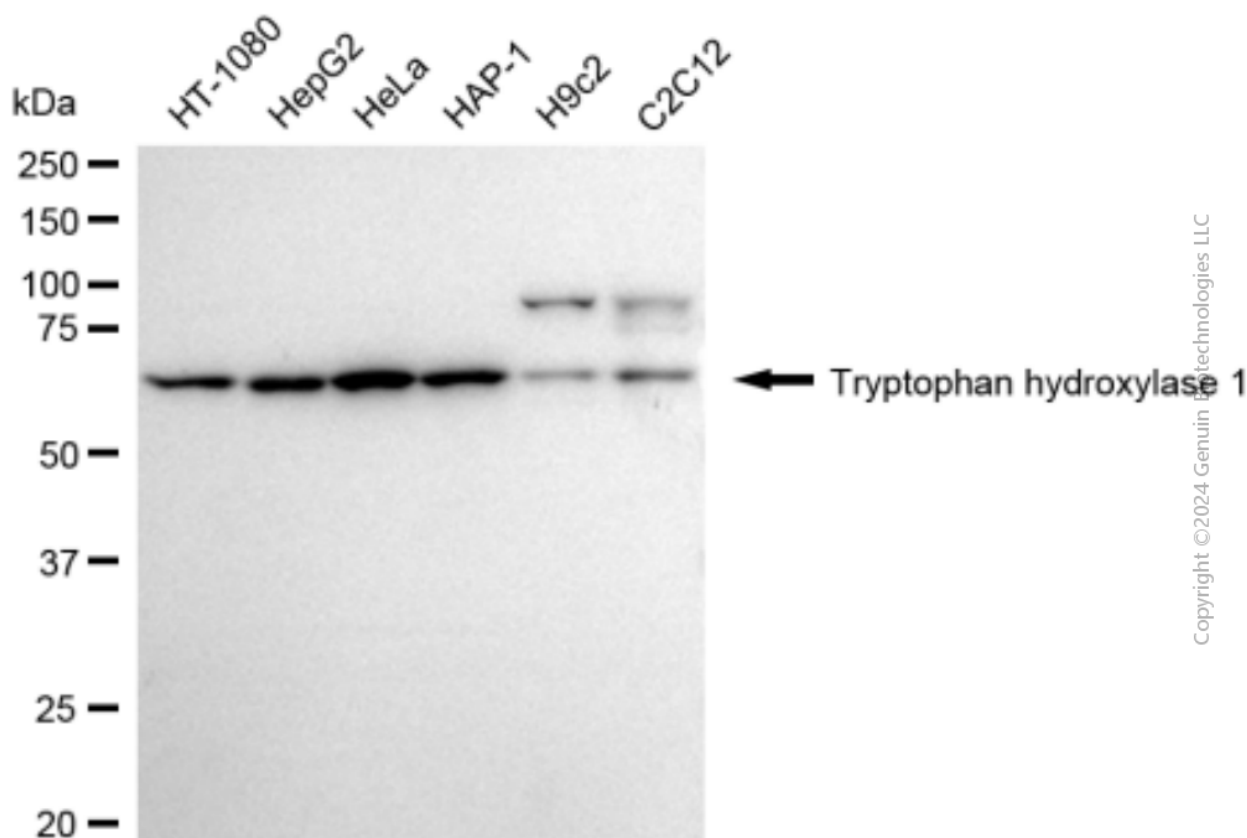
SALES@GENUINBIOTECH.COM
FAX: +1-540-855-7041

WWW.GENUINBIOTECH.COM

Anti-Tryptophan Hydroxylase 1 Recombinant Rabbit Monoclonal Antibody

PAGE 3

based on laser Intensity and smart gain: Medium. Scale bar: 20 μ m.



Western blotting analysis using anti-tryptophan hydroxylase 1 antibody (Cat#2702). Total cell lysates (30 μ g) from various cell lines were loaded and separated by SDS-PAGE. The blot was incubated with anti-tryptophan hydroxylase 1 antibody (Cat#2702, 1:5,000) and HRP-conjugated goat anti-rabbit secondary antibody (Cat#201, 1:20,000) respectively. Image was developed using FeQ™ ECL Substrate Kit (Cat#226).

SUPPORT

SUPPORT@GENUINBIOTECH.COM
TEL: +1-540-855-7041

ORDERS

SALES@GENUINBIOTECH.COM
FAX: +1-540-855-7041

WWW.GENUINBIOTECH.COM