

# Anti-Phospho-SMC1 (S957) Recombinant Rabbit Monoclonal Antibody



**Catalog #: 2703**

## Aliases

SMC1A; Structural Maintenance Of Chromosomes 1A; DXS423E; SB1.8; KIAA0178; SMC1L1; Smcb; SMC1 (Structural Maintenance Of Chromosomes 1, Yeast)-Like 1; Structural Maintenance Of Chromosomes Protein 1A; SMC Protein 1A; SMC-1-Alpha; SMC1; SMC1 Structural Maintenance Of Chromosomes 1-Like 1 (Yeast); Epididymis Secretory Sperm Binding Protein; Segregation Of Mitotic Chromosomes 1; SMC1alpha; EIEE85; SMC-1A; CDLS2; DEE85; Sb1.8

## Background

Gene Name: SMC1A

NCBI Gene Entry: [8243](#)

UniProt Entry: [Q14683](#)

## Application Information

Molecular Weight: Predicted, 143 kDa; observed, 145 kDa

Clonality: Rabbit monoclonal antibody

Clone ID: 24GB2050

Species Reactivity: Human

Applications Tested: Western blotting (WB), flow cytometry (FCM), immunocytochemistry (IC)

## Immunogen

A synthesized peptide derived from human Phospho-SMC1 (S957)

## Isotype

Rabbit IgG

## Storage Buffer

Supplied in PBS (pH 7.4) containing 50% glycerol, and 0.02% sodium azide.

## Storage

Store at -20 °C for one year.

## Recommended Dilutions

Western Blotting (WB): 1:1,000-1:5,000

Flow Cytometry (FCM): 1:2,000

Immunocytochemistry (IC): 1:100-1:1,000

---

### SUPPORT

SUPPORT@GENUINBIOTECH.COM  
TEL: +1-540-855-7041

### ORDERS

SALES@GENUINBIOTECH.COM  
FAX: +1-540-855-7041

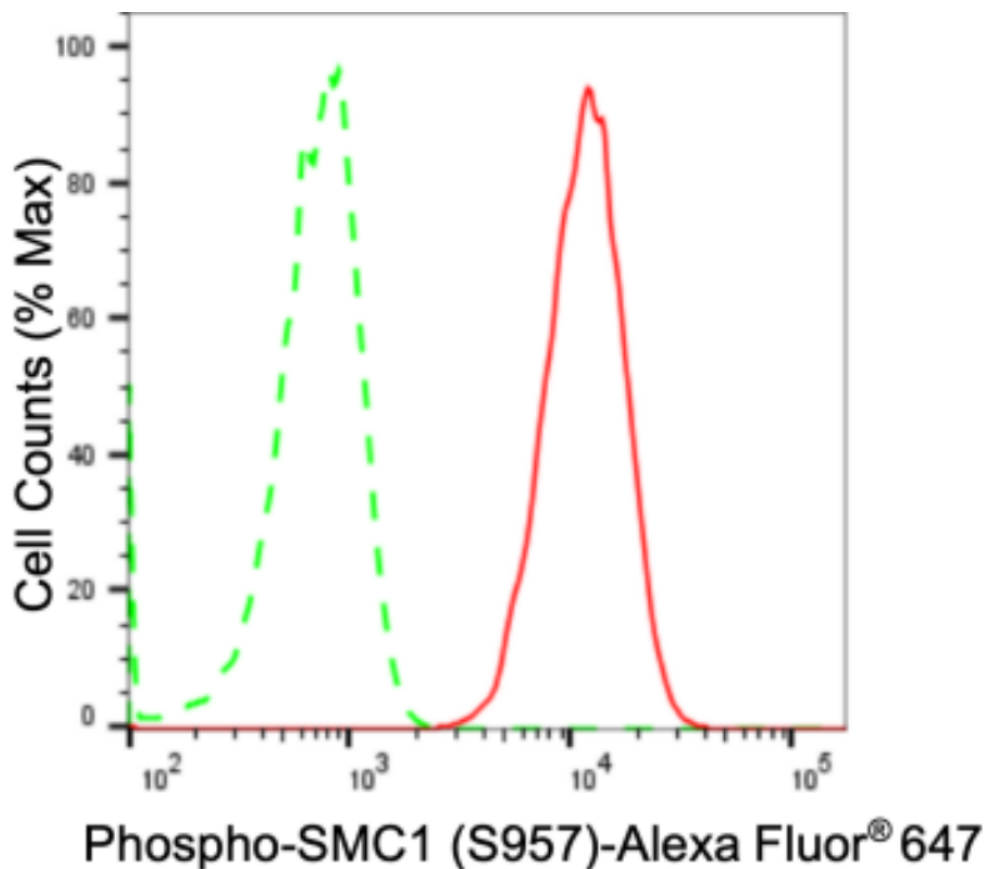
[WWW.GENUINBIOTECH.COM](http://WWW.GENUINBIOTECH.COM)

# Anti-Phospho-SMC1 (S957) Recombinant Rabbit Monoclonal Antibody

PAGE 2

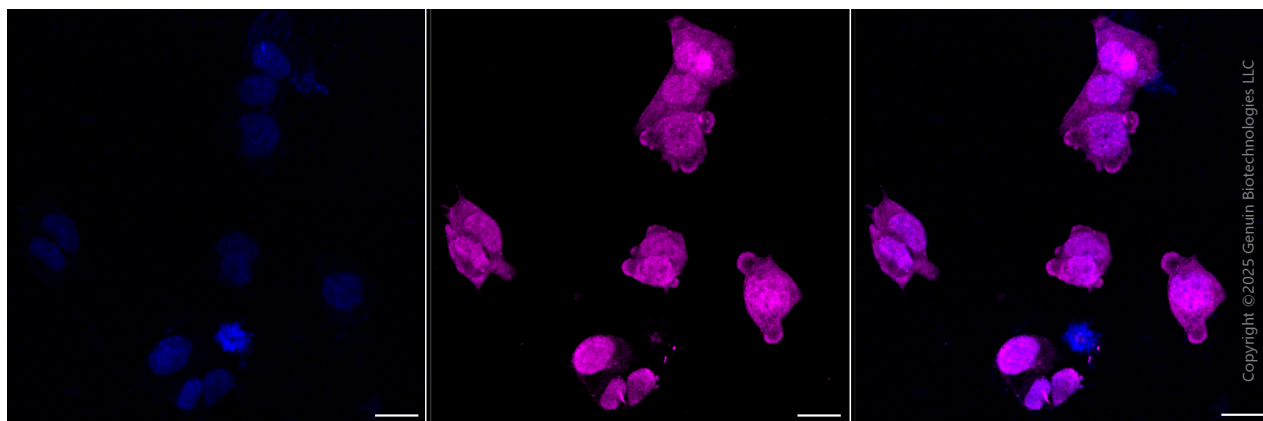
**Note:** This product is for research use only.

## Validation Data



Copyright ©2024 Genuin Biotechnologies LLC

Flow cytometric analysis of Phospho-SMC1 (S957) expression in HAP-1 cells using anti-Phospho-SMC1 (S957) antibody (Cat#2703, 1:2,000). Green, isotype control; red, Phospho-SMC1 (S957).



Immunocytochemical staining of HAP-1 cells with anti-Phospho-SMC1 (S957) antibody (Cat#2703, 1:1,000). Nuclei were stained blue with DAPI; Phospho-SMC1 (S957) was stained magenta with Alexa Fluor® 647. Images were taken using Leica stellaris 5. Protein abundance

### SUPPORT

SUPPORT@GENUINBIOTECH.COM  
TEL: +1-540-855-7041

### ORDERS

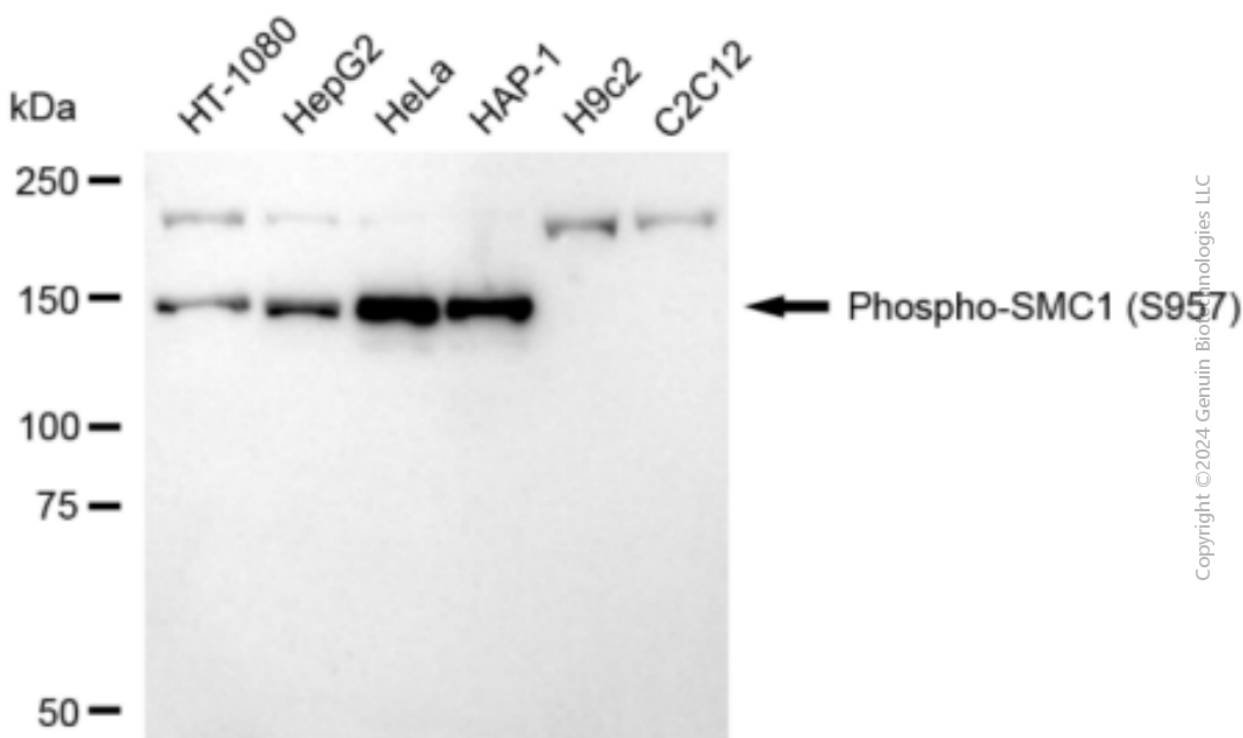
SALES@GENUINBIOTECH.COM  
FAX: +1-540-855-7041

[WWW.GENUINBIOTECH.COM](http://WWW.GENUINBIOTECH.COM)

## Anti-Phospho-SMC1 (S957) Recombinant Rabbit Monoclonal Antibody

PAGE 3

based on laser Intensity and Smart Gain □ High. Scale bar, 20 μm.



Copyright ©2024 Genuin Biotechnologies LLC

Western blotting analysis using anti-Phospho-SMC1 (S957) antibody (Cat#2703). Total cell lysates (30 μg) from various cell lines were loaded and separated by SDS-PAGE. The blot was incubated with anti-Phospho-SMC1 (S957) antibody (Cat#2703, 1:5,000) and HRP-conjugated goat anti-rabbit secondary antibody (Cat#201, 1:20,000) respectively. Image was developed using FeQ™ ECL Substrate Kit (Cat#226).

### SUPPORT

SUPPORT@GENUINBIOTECH.COM  
TEL: +1-540-855-7041

### ORDERS

SALES@GENUINBIOTECH.COM  
FAX: +1-540-855-7041

[WWW.GENUINBIOTECH.COM](http://WWW.GENUINBIOTECH.COM)