

# Anti-DNA Topoisomerase I Recombinant Rabbit Monoclonal Antibody



**Catalog #: 2704**

## Aliases

TOP1; DNA Topoisomerase I; Topoisomerase (DNA) I; DNA Topoisomerase 1; Scl-70 Antigen; Type I DNA Topoisomerase; EC 5.99.1.2; EC 5.6.2.1; TOPI

## Background

Gene Name: TOP1

NCBI Gene Entry: [7150](#)

UniProt Entry: [P11387](#)

## Application Information

Molecular Weight: Predicted, 91 kDa; observed, 91 kDa

Clonality: Rabbit monoclonal antibody

Clone ID: 24GB2060

Species Reactivity: Human, mouse, rat

Applications Tested: Western blotting (WB), flow cytometry (FCM), immunocytochemistry (IC)

## Immunogen

A synthesized peptide derived from human TOP1

## Isotype

Rabbit IgG

## Storage Buffer

Supplied in PBS (pH 7.4) containing 50% glycerol, and 0.02% sodium azide.

## Storage

Store at -20 °C for one year.

## Recommended Dilutions

Western Blotting (WB): 1:1,000-1:5,000

Flow Cytometry (FCM): 1:2,000

Immunocytochemistry (IC): 1:100-1:1,000

**Note:** This product is for research use only.

## Validation Data

---

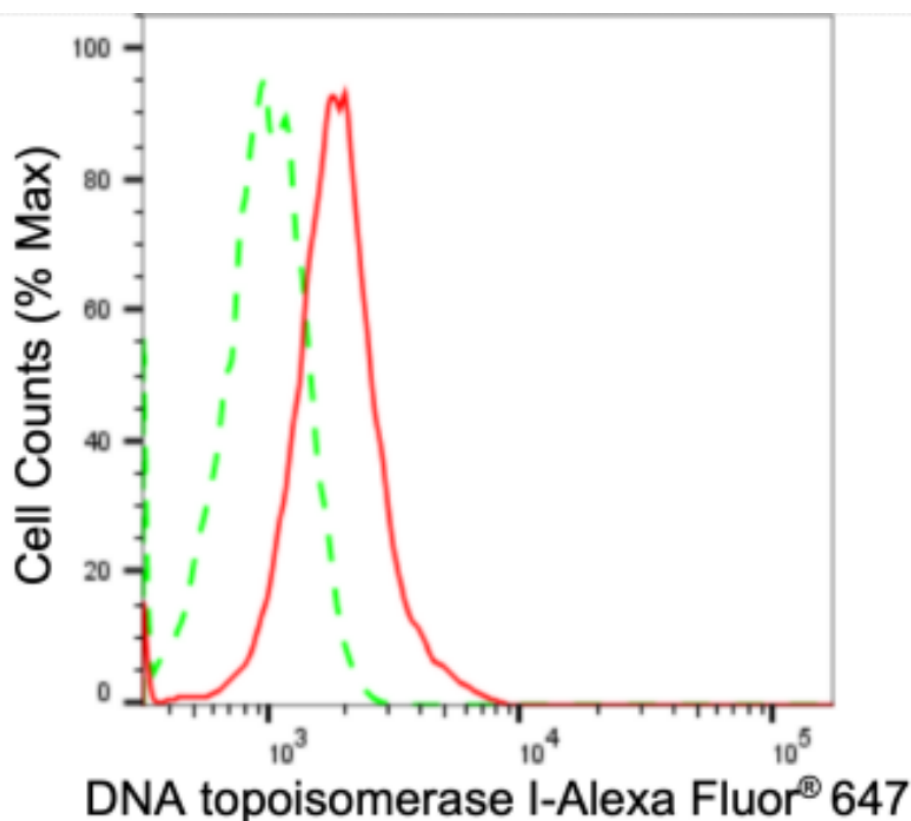
### SUPPORT

SUPPORT@GENUINBIOTECH.COM  
TEL: +1-540-855-7041

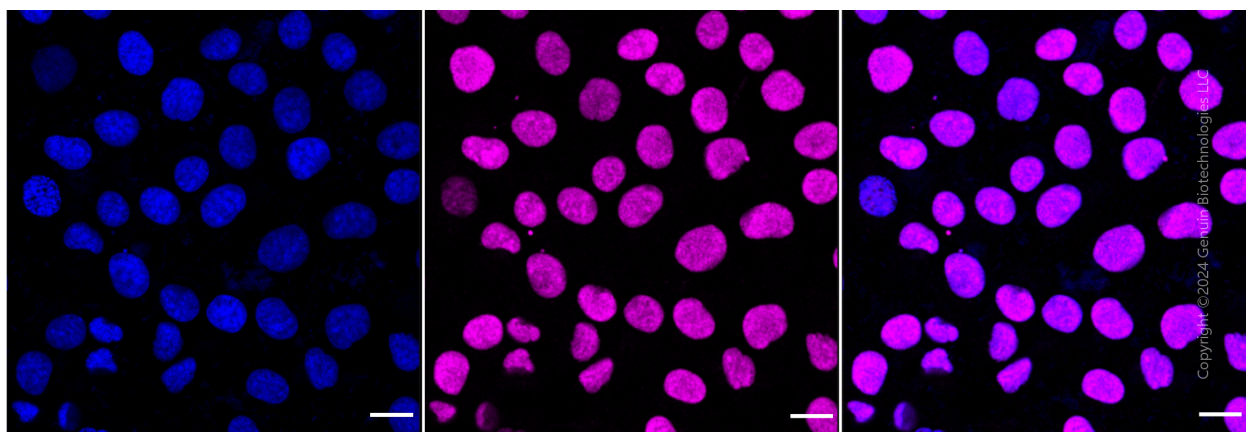
### ORDERS

SALES@GENUINBIOTECH.COM  
FAX: +1-540-855-7041

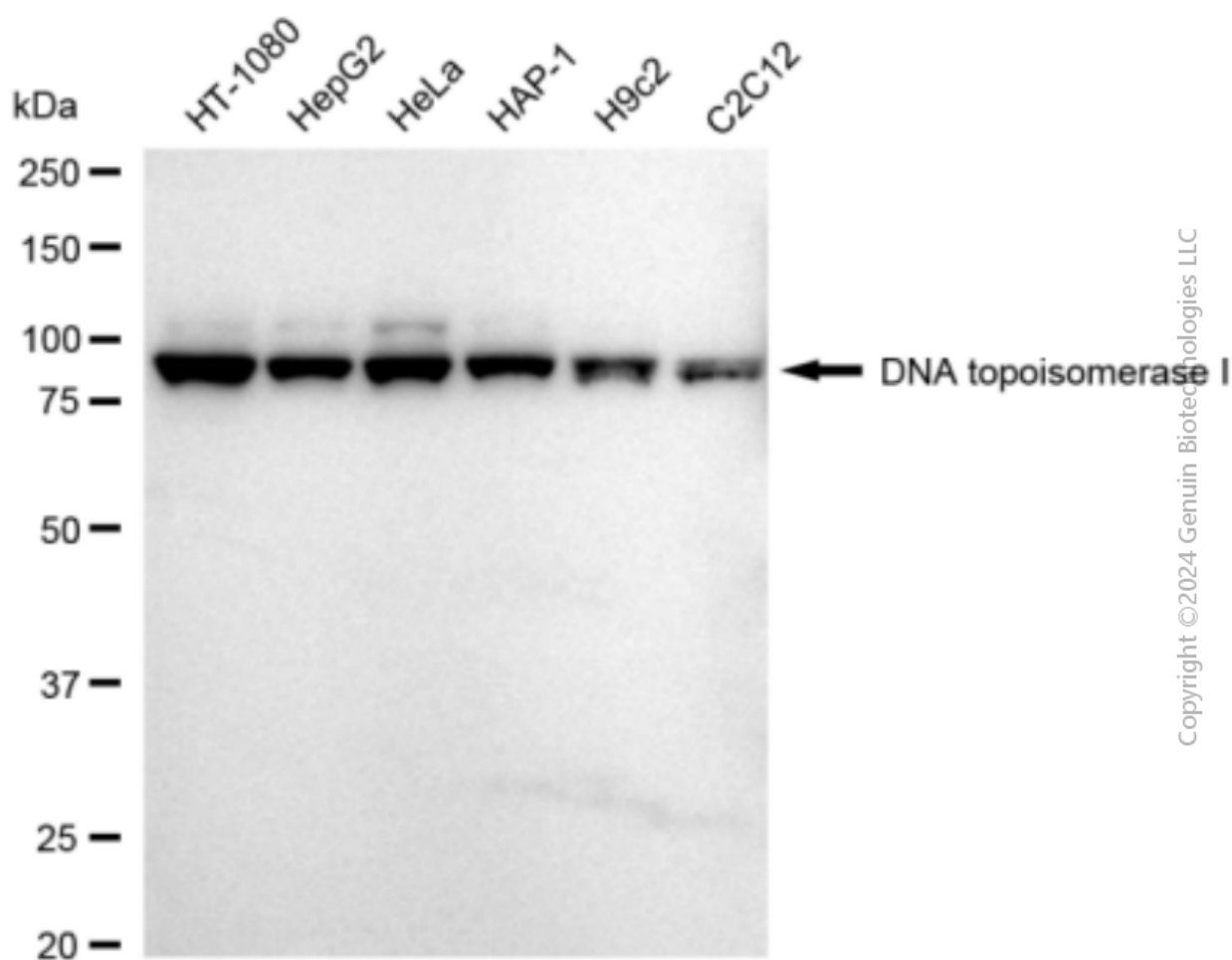
[WWW.GENUINBIOTECH.COM](http://WWW.GENUINBIOTECH.COM)



Flow cytometric analysis of DNA topoisomerase I expression in HT-1080 cells using anti-DNA topoisomerase I antibody (Cat#2704, 1:2,000). Green, isotype control; red, DNA topoisomerase I.



Immunocytochemical staining of HT-1080 cells with anti-DNA topoisomerase I antibody (Cat#2704, 1:1,000). Nuclei were stained blue with DAPI; DNA topoisomerase I was stained magenta with Alexa Fluor® 647. Images were taken using Leica stellaris 5. Protein abundance based on laser Intensity and smart gain: High. Scale bar: 20 µm.



Western blotting analysis using anti-DNA topoisomerase I antibody (Cat#2704). Total cell lysates (30  $\mu$ g) from various cell lines were loaded and separated by SDS-PAGE. The blot was incubated with anti-DNA topoisomerase I antibody (Cat#2704, 1:5,000) and HRP-conjugated goat anti-rabbit secondary antibody (Cat#201, 1:20,000) respectively. Image was developed using FeQ<sup>TM</sup> ECL Substrate Kit (Cat#226).