

# Anti-Superoxide Dismutase 1 Recombinant Rabbit Monoclonal Antibody



**Catalog #: 2708**

## Aliases

SOD1; Superoxide Dismutase 1; IPOA; Superoxide Dismutase 1, Soluble; Superoxide Dismutase [Cu-Zn]; EC 1.15.1.1; HSod1; ALS1; ALS; Amyotrophic Lateral Sclerosis 1 (Adult); Epididymis Secretory Protein Li 44; Superoxide Dismutase, Cystolic; Cu/Zn Superoxide Dismutase; Indophenoloxidase A; SOD, Soluble; Homodimer; HEL-S-44; STAHP; SOD

## Background

Gene Name: SOD1

NCBI Gene Entry: [6647](#)

UniProt Entry: [P00441](#)

## Application Information

Molecular Weight: Predicted, 16 kDa; observed, 18 kDa

Clonality: Rabbit monoclonal antibody

Clone ID: 24GB2150

Species Reactivity: Human, mouse, rat

Applications Tested: Western blotting (WB), flow cytometry (FCM), immunocytochemistry (IC)

## Immunogen

A synthesized peptide derived from human SOD1

## Isotype

Rabbit IgG

## Storage Buffer

Supplied in PBS (pH 7.4) containing 50% glycerol, and 0.02% sodium azide.

## Storage

Store at -20 °C for one year.

## Recommended Dilutions

Western Blotting (WB): 1:1,000-1:5,000

Flow Cytometry (FCM): 1:2,000

Immunocytochemistry (IC): 1:100-1:1,000

---

### SUPPORT

SUPPORT@GENUINBIOTECH.COM  
TEL: +1-540-855-7041

### ORDERS

SALES@GENUINBIOTECH.COM  
FAX: +1-540-855-7041

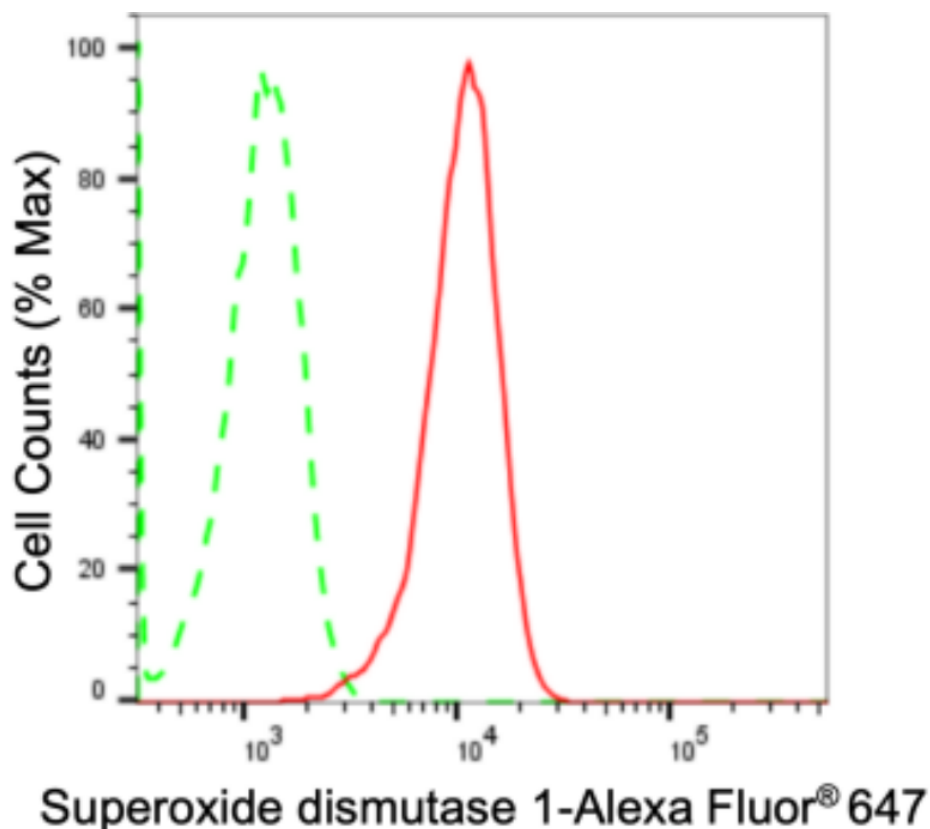
[WWW.GENUINBIOTECH.COM](http://WWW.GENUINBIOTECH.COM)

# Anti-Superoxide Dismutase 1 Recombinant Rabbit Monoclonal Antibody

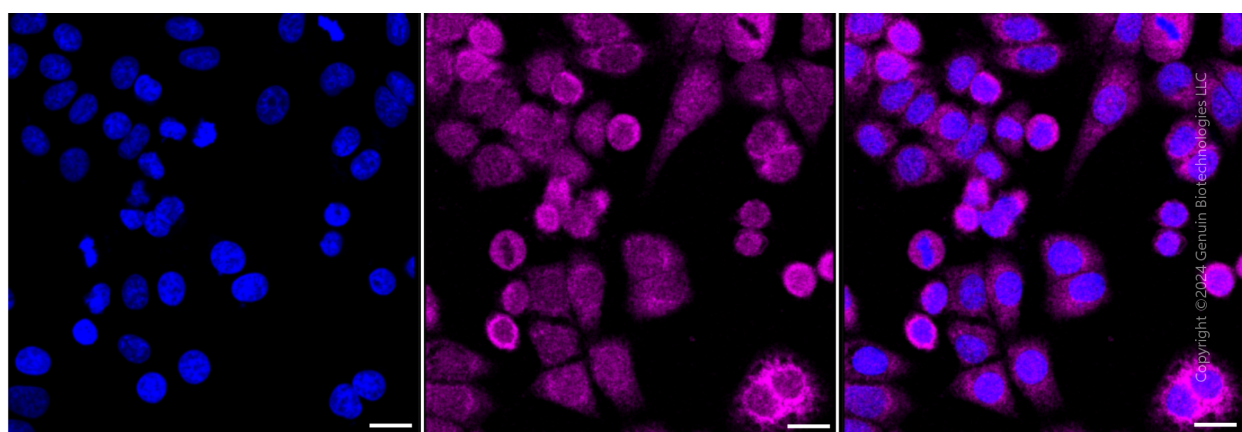
PAGE 2

**Note:** This product is for research use only.

## Validation Data



Copyright ©2024 Genuin Biotechnologies LLC



Copyright ©2024 Genuin Biotechnologies LLC

### SUPPORT

SUPPORT@GENUINBIOTECH.COM  
TEL: +1-540-855-7041

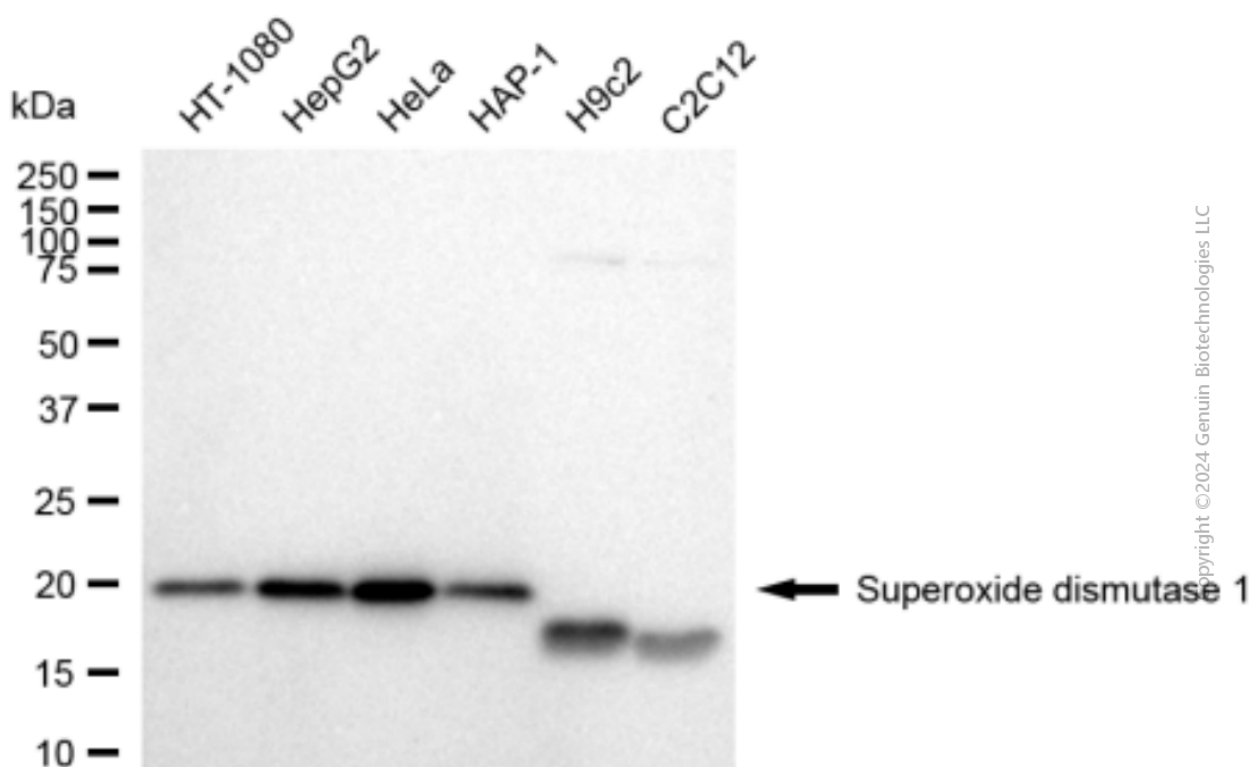
### ORDERS

SALES@GENUINBIOTECH.COM  
FAX: +1-540-855-7041

WWW.GENUINBIOTECH.COM

## Anti-Superoxide Dismutase 1 Recombinant Rabbit Monoclonal Antibody

PAGE 3



Western blotting analysis using anti-Superoxide dismutase 1 antibody (Cat#2708). Total cell lysates (30  $\mu$ g) from various cell lines were loaded and separated by SDS-PAGE. The blot was incubated with anti-Superoxide dismutase 1 antibody (Cat#2708, 1:5,000) and HRP-conjugated goat anti-rabbit secondary antibody (Cat#201, 1:20,000) respectively. Image was developed using FeQ™ ECL Substrate Kit (Cat#226).

### SUPPORT

SUPPORT@GENUINBIOTECH.COM  
TEL: +1-540-855-7041

### ORDERS

SALES@GENUINBIOTECH.COM  
FAX: +1-540-855-7041

[WWW.GENUINBIOTECH.COM](http://WWW.GENUINBIOTECH.COM)