

# Anti-Desmocollin 3 Recombinant Rabbit Monoclonal Antibody



**Catalog #: 2712**

## Aliases

DSC3; Desmocollin 3; CDHF3; DSC1; DSC2; DSC4; DSC; Cadherin Family Member 3; Desmocollin-3; Desmocollin-4; HT-CP

## Background

Gene Name: DSC2

NCBI Gene Entry: [1824](#)

UniProt Entry: [Q02487](#)

## Application Information

Molecular Weight: Predicted, 100 kDa; observed, 100 kDa

Clonality: Rabbit monoclonal antibody

Clone ID: 23GB1200

Species Reactivity: Human

Applications Tested: Western blotting (WB), flow cytometry (FCM), immunocytochemistry (IC)

## Immunogen

A synthesized peptide derived from Desmocollin 3

## Isotype

Rabbit IgG

## Storage Buffer

Supplied in PBS (pH 7.4) containing 50% glycerol, and 0.02% sodium azide.

## Storage

Store at -20 °C for one year.

## Recommended Dilutions

Western Blotting (WB): 1:1,000-1:5,000

Flow Cytometry (FCM): 1:2,000

Immunocytochemistry (IC): 1:100-1:1,000

**Note:** This product is for research use only.

## Validation Data

---

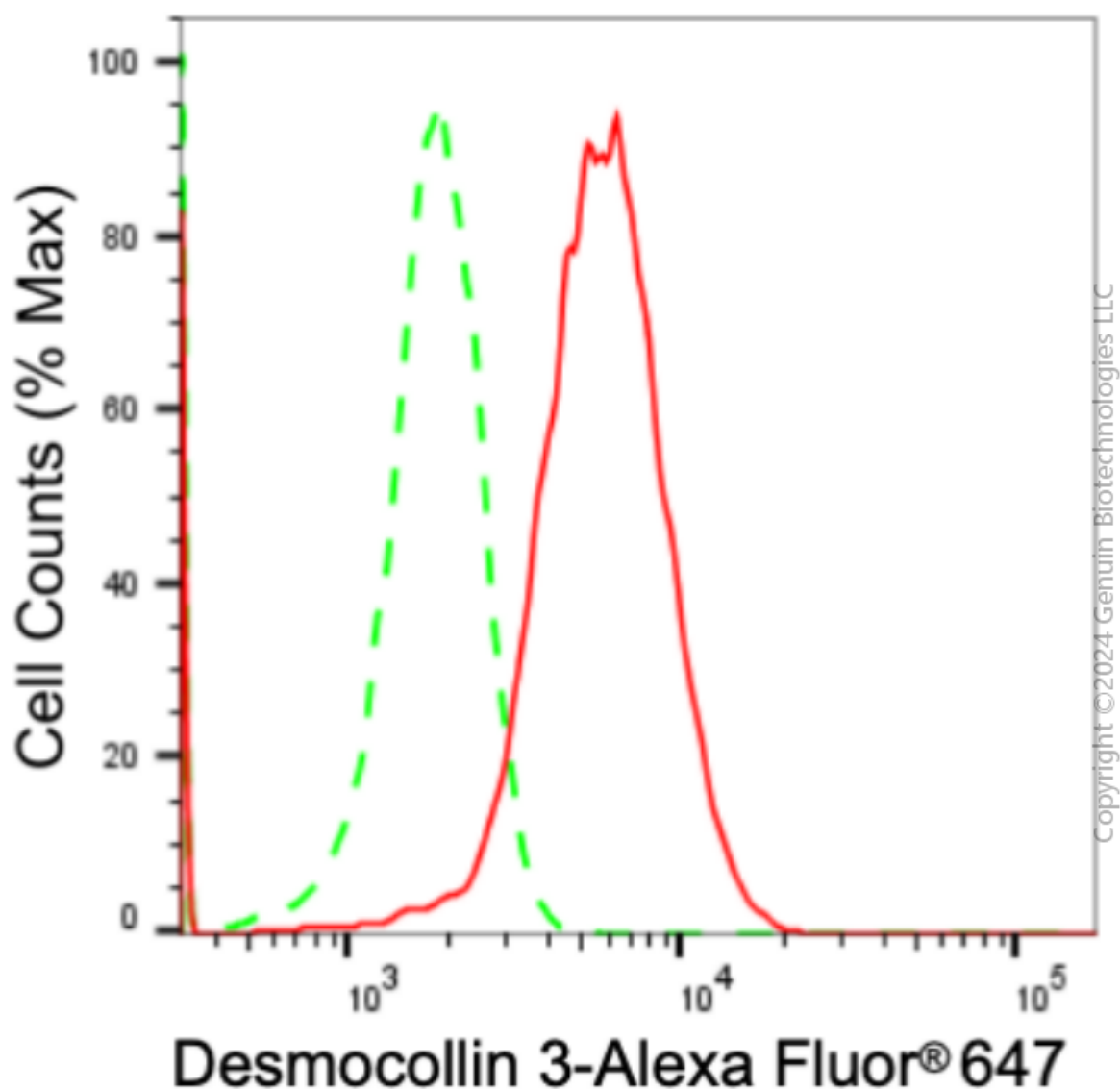
### SUPPORT

SUPPORT@GENUINBIOTECH.COM  
TEL: +1-540-855-7041

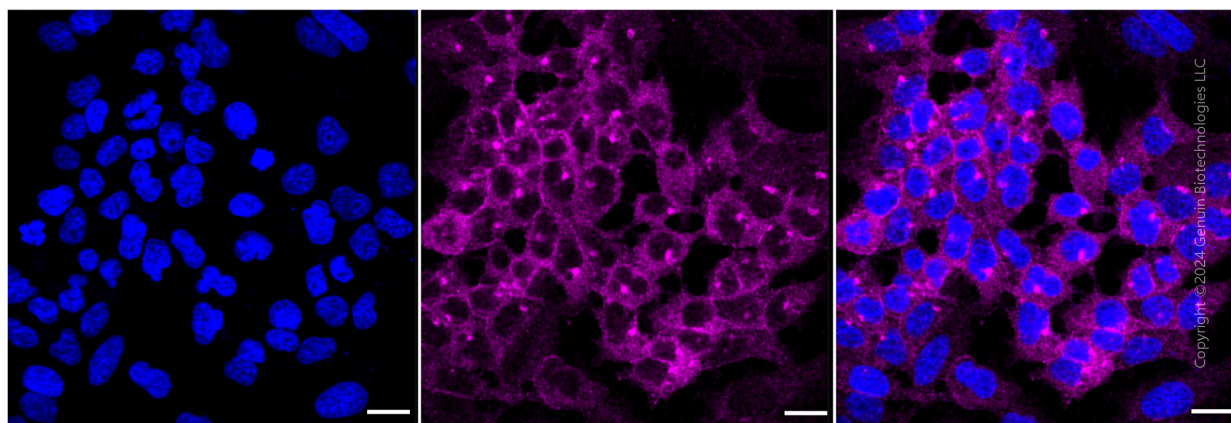
### ORDERS

SALES@GENUINBIOTECH.COM  
FAX: +1-540-855-7041

[WWW.GENUINBIOTECH.COM](http://WWW.GENUINBIOTECH.COM)



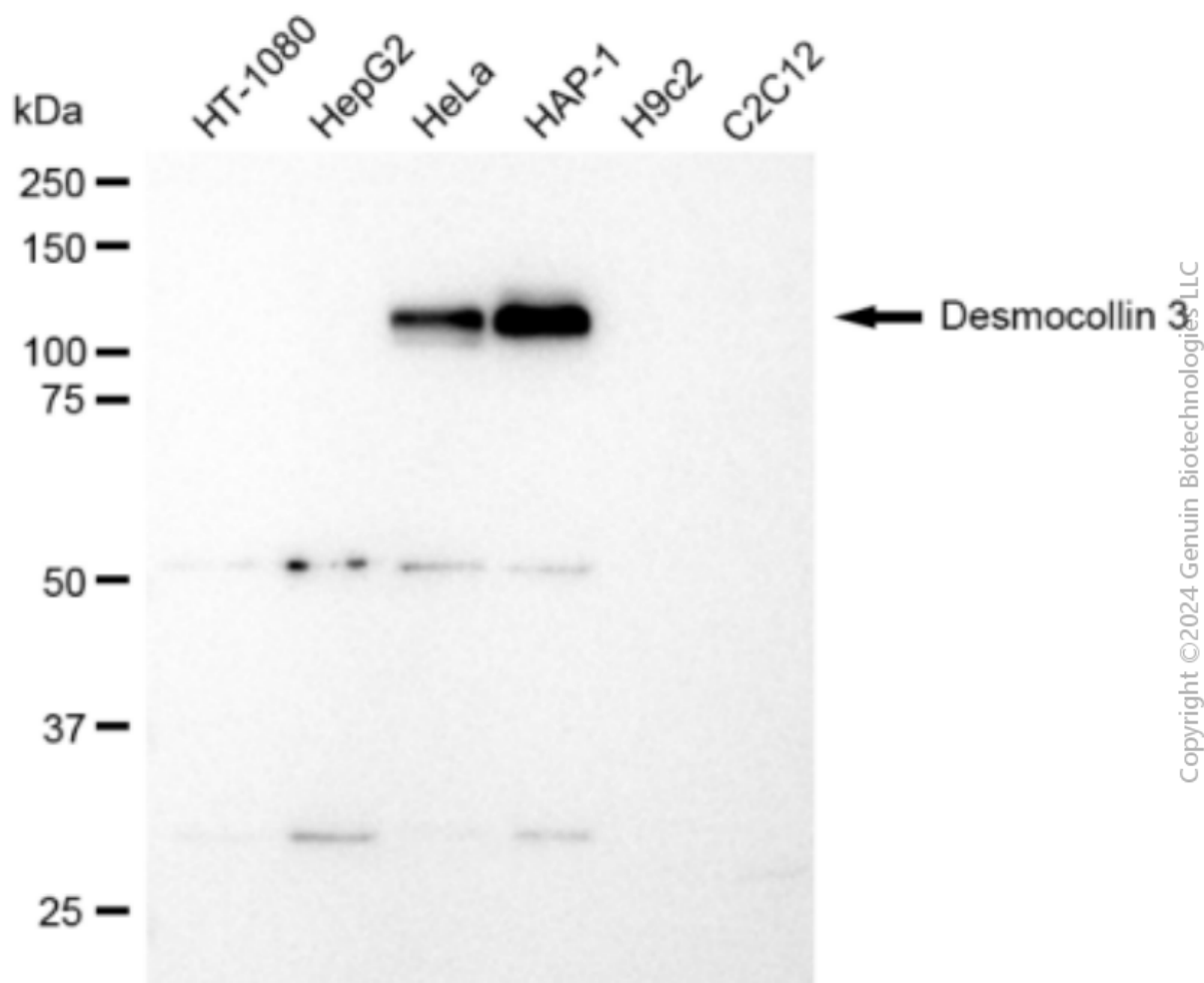
Flow cytometric analysis of Desmocollin 3 expression in HeLa cells using Desmocollin 3 antibody (Cat#2712, 1:2,000). Green, isotype control; red, Desmocollin 3.



## Anti-Desmocollin 3 Recombinant Rabbit Monoclonal Antibody

PAGE 3

Immunocytochemical staining of HeLa cells with Desmocollin 3 antibody (Cat#2712, 1:1,000). Nuclei were stained blue with DAPI; Desmocollin 3 with Alexa Fluor® 647. Images were taken using Leica stellaris 5. Protein abundance based on laser Intensity and smart gain: Medium. Scale bar: 20  $\mu$ m.



Western blotting analysis using anti-Desmocollin 3 antibody (Cat#2712). Total cell lysates (30  $\mu$ g) from various cell lines were loaded and separated by SDS-PAGE. The blot was incubated with anti-Desmocollin 3 antibody (Cat#2712, 1:5,000) and HRP-conjugated goat anti-rabbit secondary antibody (Cat#201, 1:20,000) respectively. Image was developed using FeQ™ ECL Substrate Kit (Cat#226).

### SUPPORT

SUPPORT@GENUINBIOTECH.COM  
TEL: +1-540-855-7041

### ORDERS

SALES@GENUINBIOTECH.COM  
FAX: +1-540-855-7041

WWW.GENUINBIOTECH.COM