

Anti-SNRPA Recombinant Rabbit Monoclonal Antibody



Catalog #: 2722

Aliases

SNRPA; Small Nuclear Ribonucleoprotein Polypeptide A; U1-A; U1A; Mud1; U1 Small Nuclear Ribonucleoprotein A; U1 SnRNP A; U1 Small Nuclear RNP-Specific A; U1 SnRNP-Specific Protein A

Background

Gene Name: SNRPA

NCBI Gene Entry: [6626](#)

UniProt Entry: [P09012](#)

Application Information

Molecular Weight: Predicted, 31 kDa; observed, 31 kDa

Clonality: Rabbit monoclonal antibody

Clone ID: 24GB2365

Species Reactivity: Human, mouse, rat

Applications Tested: Western blotting (WB), flow cytometry (FCM), immunocytochemistry (IC)

Immunogen

A synthesized peptide derived from human U1A

Isotype

Rabbit IgG

Storage Buffer

Supplied in PBS (pH 7.4) containing 50% glycerol, and 0.02% sodium azide.

Storage

Store at -20 °C for one year.

Recommended Dilutions

Western Blotting (WB): 1:1,000-1:5,000

Flow Cytometry (FCM): 1:2,000

Immunocytochemistry (IC): 1:100-1:1,000

Note: This product is for research use only.

SUPPORT

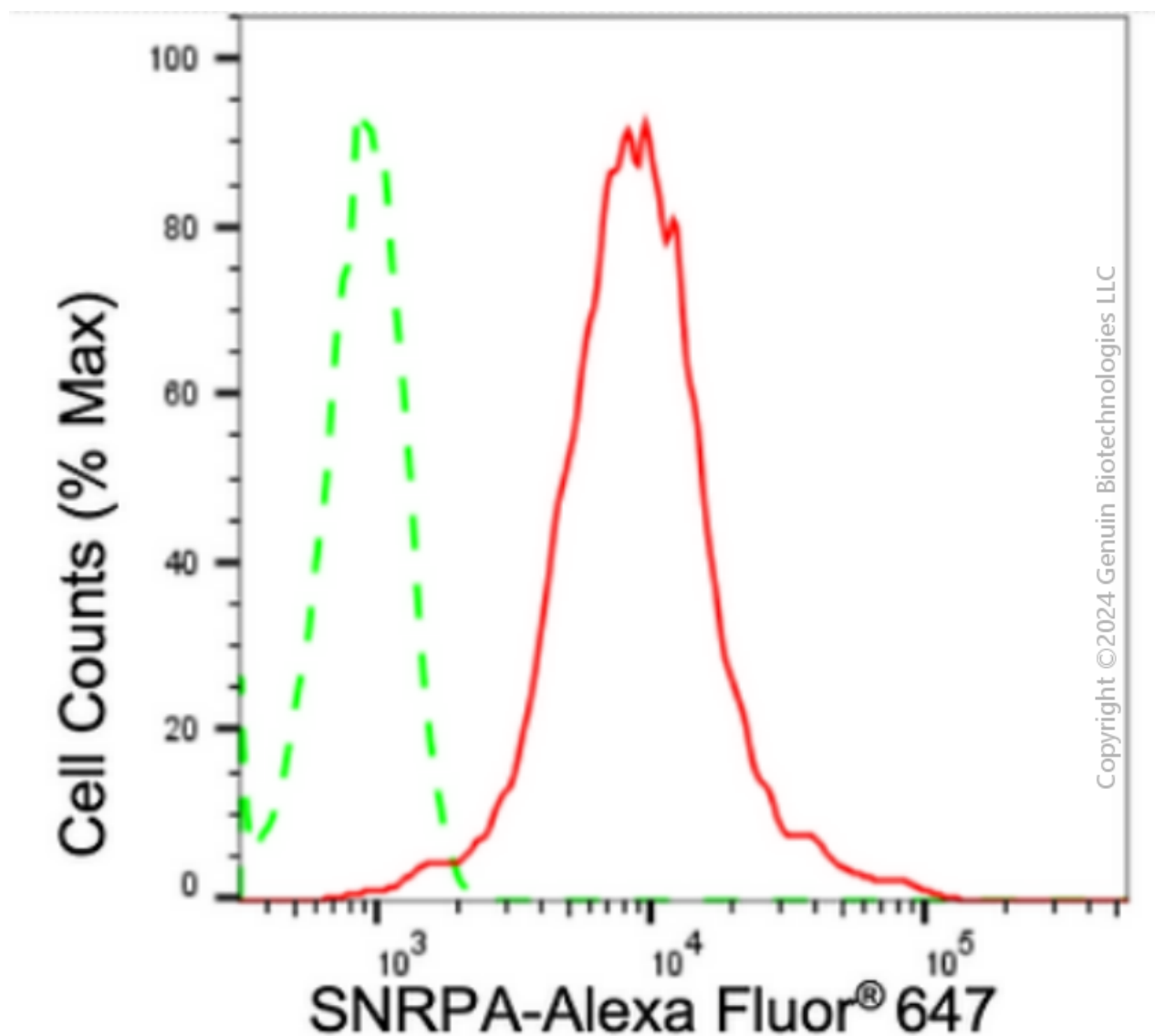
SUPPORT@GENUINBIOTECH.COM
TEL: +1-540-855-7041

ORDERS

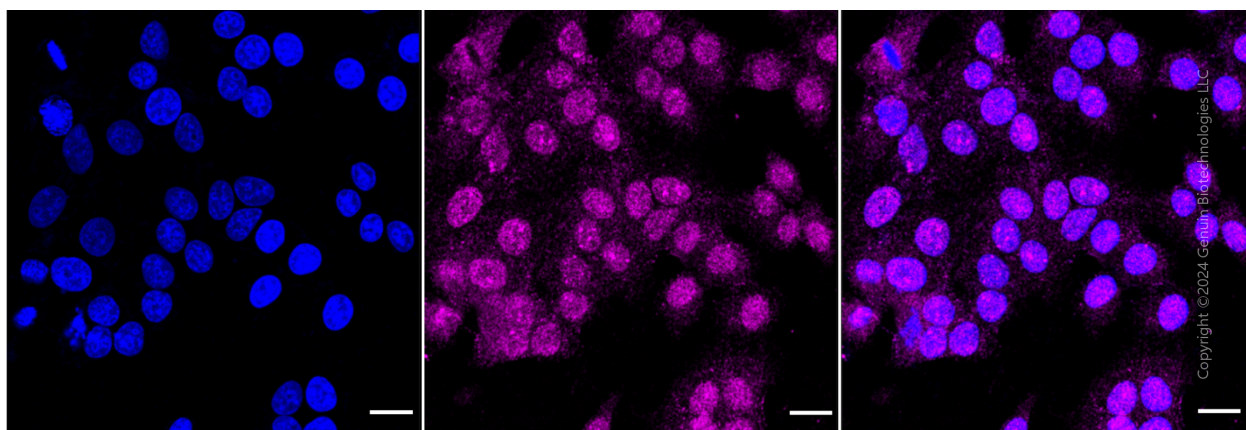
SALES@GENUINBIOTECH.COM
FAX: +1-540-855-7041

WWW.GENUINBIOTECH.COM

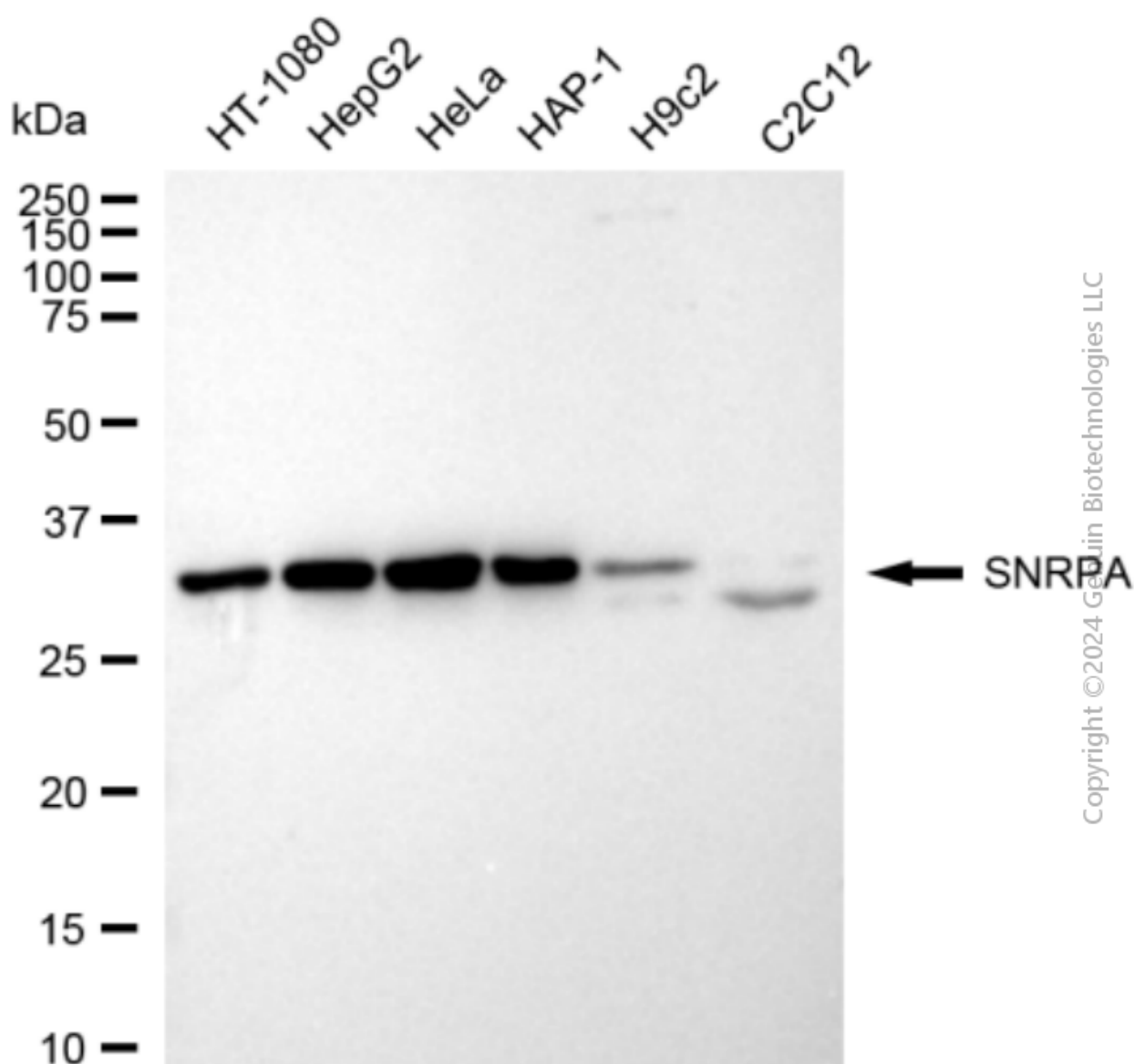
Validation Data



Flow cytometric analysis of SNRPA expression in HepG2 cells using anti-SNRPA antibody (Cat#2722, 1:2,000). Green, isotype control; red, SNRPA.



Immunocytochemical staining of HepG2 cells with anti-SNRPA antibody (Cat#2722, 1:1,000). Nuclei were stained blue with DAPI; SNRPA was stained magenta with Alexa Fluor® 647. Images were taken using Leica stellaris 5. Protein abundance based on laser Intensity and smart gain: Medium. Scale bar: 20 μ m.



Western blotting analysis using anti-SNRPA antibody (Cat#2722). Total cell lysates (30 μ g for H9c2 and C2C12, 10 μ g for others) from various cell lines were loaded and separated by SDS-PAGE. The blot was incubated with anti-SNRPA antibody (Cat#2722, 1:5,000) and HRP-conjugated goat anti-rabbit secondary antibody (Cat#201, 1:20,000) respectively. Image was developed using FeQ™ ECL Substrate Kit (Cat#226).