

# Anti-Solute Carrier Family 29 Member 2 Recombinant Rabbit Monoclonal Antibody



**Catalog #: 2723**

## Aliases

SLC29A2; Solute Carrier Family 29 Member 2; DER12; HNP36; ENT2; Equilibrative Nitrobenzylmercaptapurine Riboside-Insensitive Nucleoside Transporter; Solute Carrier Family 29 (Equilibrative Nucleoside Transporter), Member 2; Equilibrative NBMPR-Insensitive Nucleoside Transporter; Equilibrative Nucleoside Transporter; Hydrophobic Nucleolar Protein, 36 KDa; Delayed-Early Response Protein 12; Nucleoside Transporter, Ei-Type; 36 KDa Nucleolar Protein HNP36; HENT2; Solute Carrier Family 29 (Nucleoside Transporters), Member; Hydrophobic Nucleolar Protein, 36kD

## Background

Gene Name: SLC29A2

NCBI Gene Entry: [3177](#)

UniProt Entry: [Q14542](#)

## Application Information

Molecular Weight: Predicted, 50 kDa; observed, 55-65 kDa

Clonality: Rabbit monoclonal antibody

Clone ID: 24GB2370

Species Reactivity: Human

Applications Tested: Western blotting (WB), flow cytometry (FCM), immunocytochemistry (IC)

## Immunogen

A synthesized peptide derived from human ENT2

## Isotype

Rabbit IgG

## Storage Buffer

Supplied in PBS (pH 7.4) containing 50% glycerol, and 0.02% sodium azide.

## Storage

Store at -20 °C for one year.

## Recommended Dilutions

Western Blotting (WB): 1:1,000-1:5,000

Flow Cytometry (FCM): 1:2,000

---

### SUPPORT

SUPPORT@GENUINBIOTECH.COM  
TEL: +1-540-855-7041

### ORDERS

SALES@GENUINBIOTECH.COM  
FAX: +1-540-855-7041

[WWW.GENUINBIOTECH.COM](http://WWW.GENUINBIOTECH.COM)

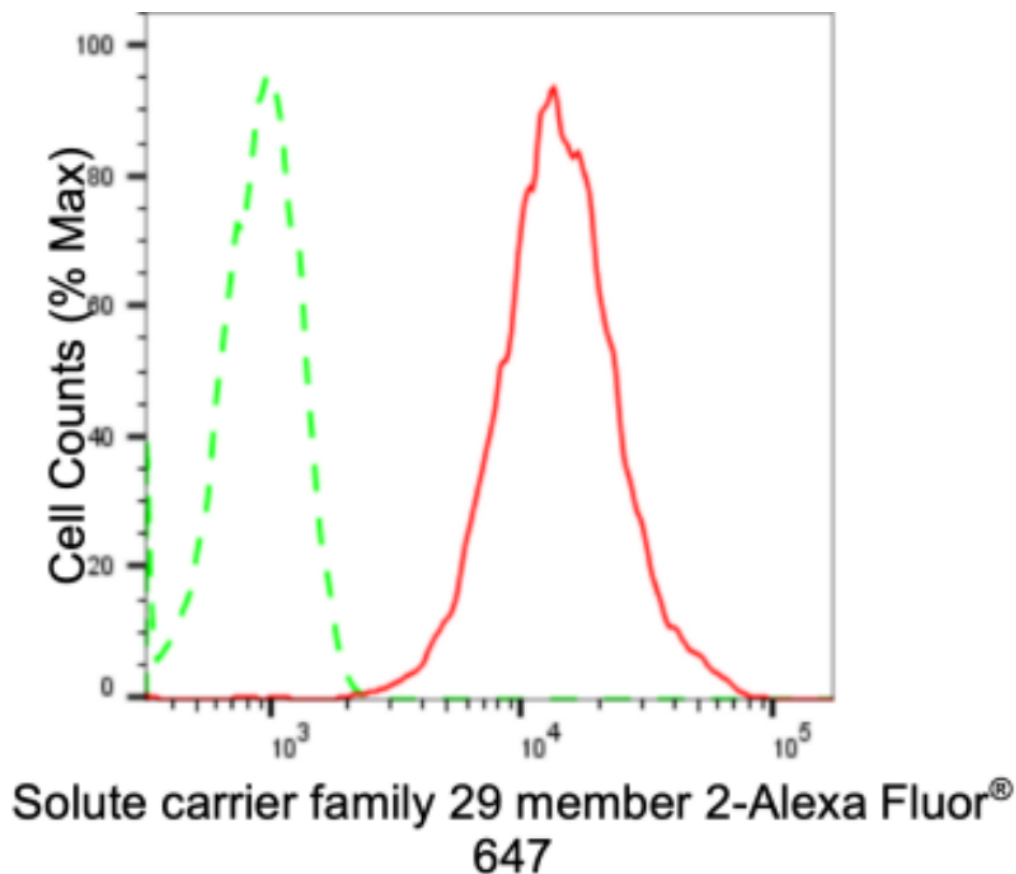
# Anti-Solute Carrier Family 29 Member 2 Recombinant Rabbit Monoclonal Antibody

PAGE 2

Immunocytochemistry (IC): 1:100-1:1,000

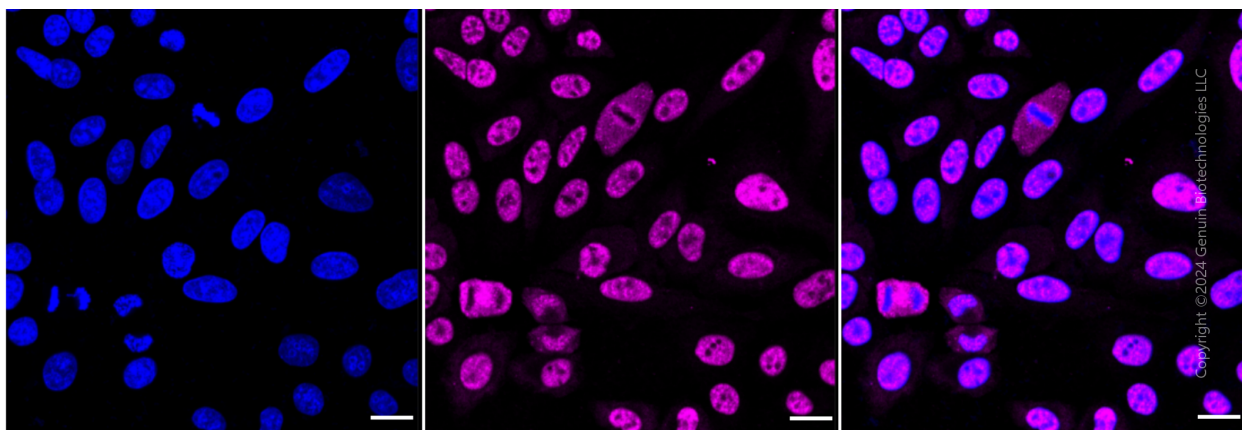
**Note:** This product is for research use only.

## Validation Data



Copyright ©2024 Genuin Biotechnologies LLC

Flow cytometric analysis of Solute carrier family 29 member 2 expression in HepG2 cells using anti-Solute carrier family 29 member 2 antibody (Cat#2723, 1:2,000). Green, isotype control; red, Solute carrier family 29 member 2.



### SUPPORT

SUPPORT@GENUINBIOTECH.COM  
TEL: +1-540-855-7041

### ORDERS

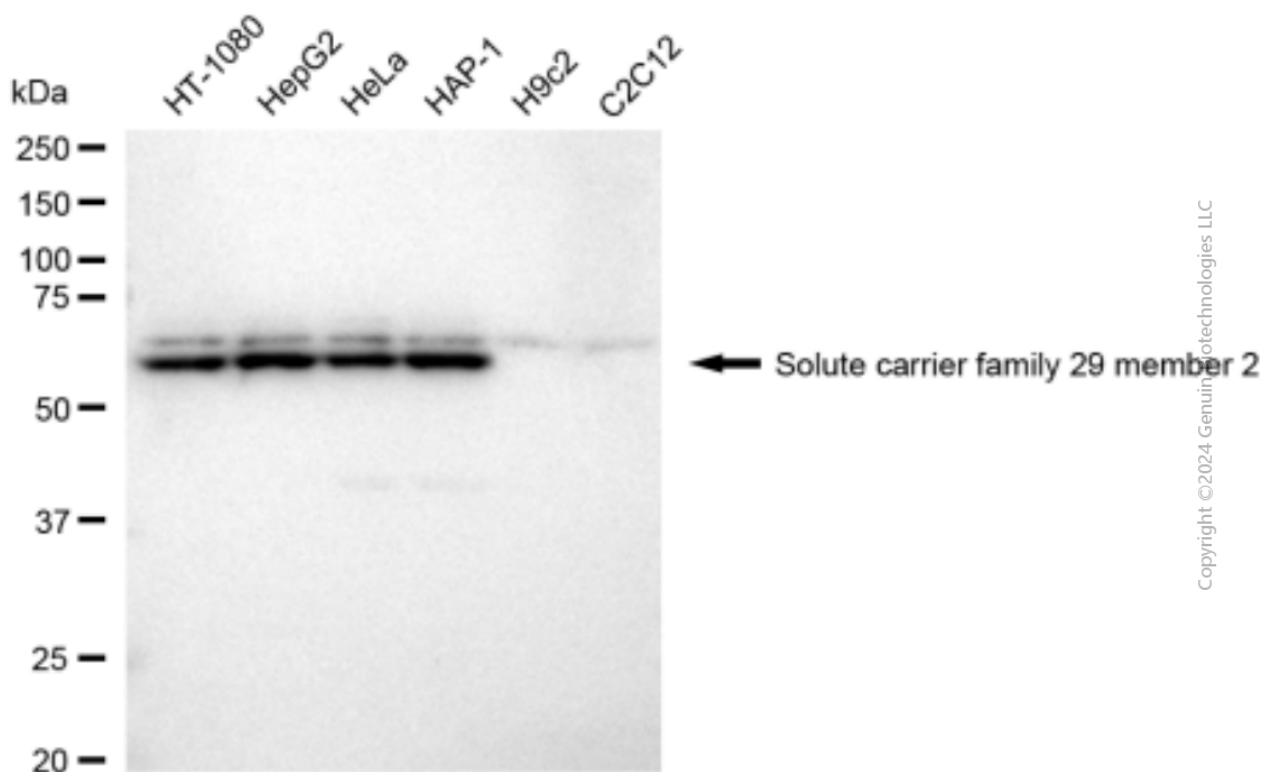
SALES@GENUINBIOTECH.COM  
FAX: +1-540-855-7041

WWW.GENUINBIOTECH.COM

## Anti-Solute Carrier Family 29 Member 2 Recombinant Rabbit Monoclonal Antibody

PAGE 3

Immunocytochemical staining of HepG2 cells with anti-Solute carrier family 29 member 2 antibody (Cat#2723, 1:1,000). Nuclei were stained blue with DAPI; Solute carrier family 29 member 2 was stained magenta with Alexa Fluor® 647. Images were taken using Leica stellaris 5. Protein abundance based on laser Intensity and smart gain: High. Scale bar: 20  $\mu$ m.



Western blotting analysis using anti-solute carrier family 29 member 2 antibody (Cat#2723). Total cell lysates (30  $\mu$ g) from various cell lines were loaded and separated by SDS-PAGE. The blot was incubated with anti-solute carrier family 29 member 2 antibody (Cat#2723, 1:5,000) and HRP-conjugated goat anti-rabbit secondary antibody (Cat#201, 1:20,000) respectively. Image was developed using FeQ™ ECL Substrate Kit (Cat#226).

### SUPPORT

SUPPORT@GENUINBIOTECH.COM  
TEL: +1-540-855-7041

### ORDERS

SALES@GENUINBIOTECH.COM  
FAX: +1-540-855-7041

WWW.GENUINBIOTECH.COM