

# Anti-Ubiquitin Like Modifier Activating Enzyme 1 Recombinant Rabbit Monoclonal



**Catalog #: 2729**

## Aliases

UBA1; Ubiquitin Like Modifier Activating Enzyme 1; CFAP124; UBE1X; POC20; A1S9T; UBE1; Ubiquitin-Like Modifier-Activating Enzyme 1; Ubiquitin-Activating Enzyme E1; GXP1; Ubiquitin-Activating Enzyme E1 (A1S9T And BN75 Temperature Sensitivity Complementing); UBA1, Ubiquitin-Activating Enzyme E1 Homolog (Yeast); A1S9T And BN75 Temperature Sensitivity Complementing; POC20 Centriolar Protein Homolog (Chlamydomonas); UBA1, Ubiquitin-Activating Enzyme E1 Homolog A; Ubiquitin-Like Modifier Activating Enzyme 1; Testicular Secretory Protein Li 63; POC20 Centriolar Protein Homolog; Protein A1S9; EC 6.2.1.45; AMCX1; SMAX2; UBA1A; VEXAS; A1S9; A1ST

## Background

Gene Name: UBA1

NCBI Gene Entry: [7317](#)

UniProt Entry: [P22314](#)

## Application Information

Molecular Weight: Predicted, 118 kDa; observed, 118 kDa

Clonality: Rabbit monoclonal antibody

Clone ID: 24GB2435

Species Reactivity: Human

Applications Tested: Western blotting (WB), flow cytometry (FCM), immunocytochemistry (IC)

## Immunogen

A synthesized peptide derived from human E1 Ubiquitin Activating Enzyme

## Isotype

Rabbit IgG

## Storage Buffer

Supplied in PBS (pH 7.4) containing 50% glycerol, and 0.02% sodium azide.

## Storage

Store at -20 °C for one year.

## Recommended Dilutions

Western Blotting (WB): 1:1,000-1:5,000

---

### SUPPORT

SUPPORT@GENUINBIOTECH.COM  
TEL: +1-540-855-7041

### ORDERS

SALES@GENUINBIOTECH.COM  
FAX: +1-540-855-7041

[WWW.GENUINBIOTECH.COM](http://WWW.GENUINBIOTECH.COM)

# Anti-Ubiquitin Like Modifier Activating Enzyme 1 Recombinant Rabbit Monoclonal

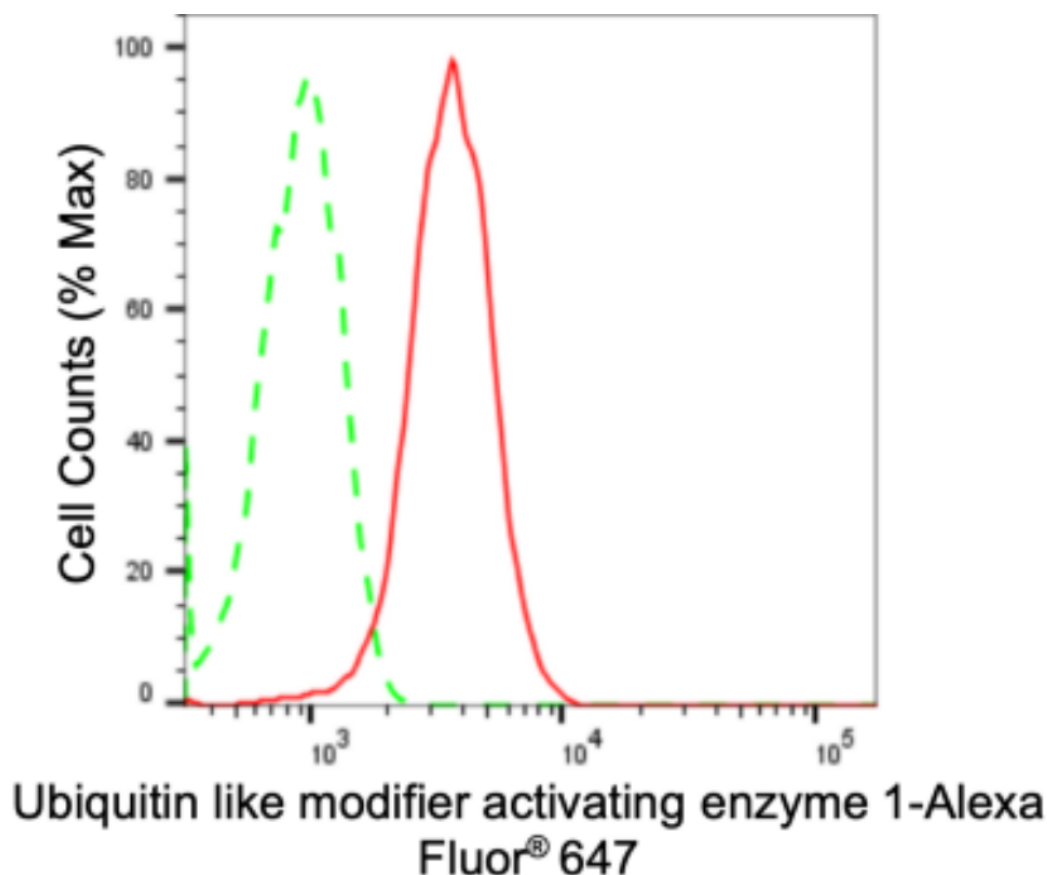
PAGE 2

Flow Cytometry (FCM): 1:2,000

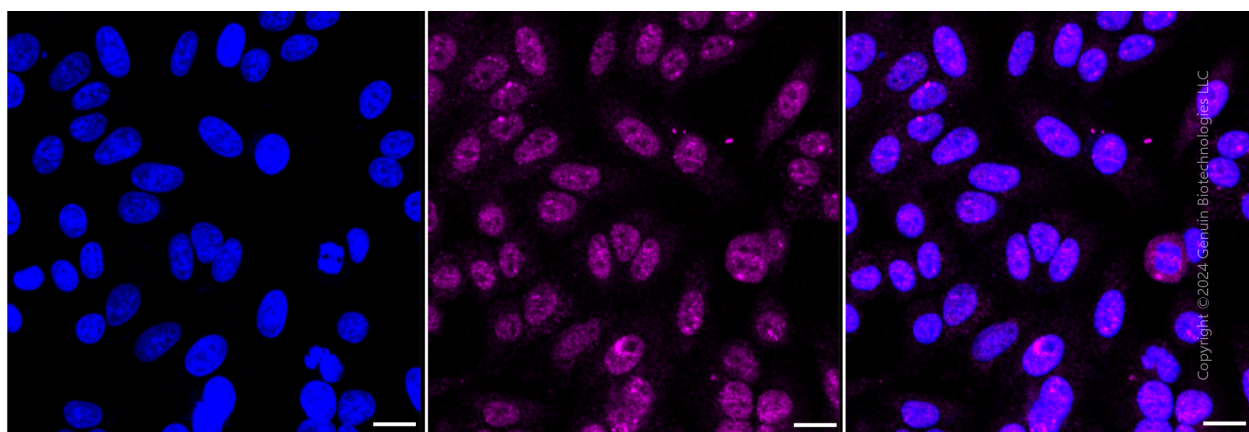
Immunocytochemistry (IC): 1:100-1:1,000

**Note:** This product is for research use only.

## Validation Data



Flow cytometric analysis of Ubiquitin like modifier activating enzyme 1 expression in HepG2 cells using anti-Ubiquitin like modifier activating enzyme 1 antibody (Cat#2729, 1:2,000). Green, isotype control; red, Ubiquitin like modifier activating enzyme 1.



### SUPPORT

SUPPORT@GENUINBIOTECH.COM  
TEL: +1-540-855-7041

### ORDERS

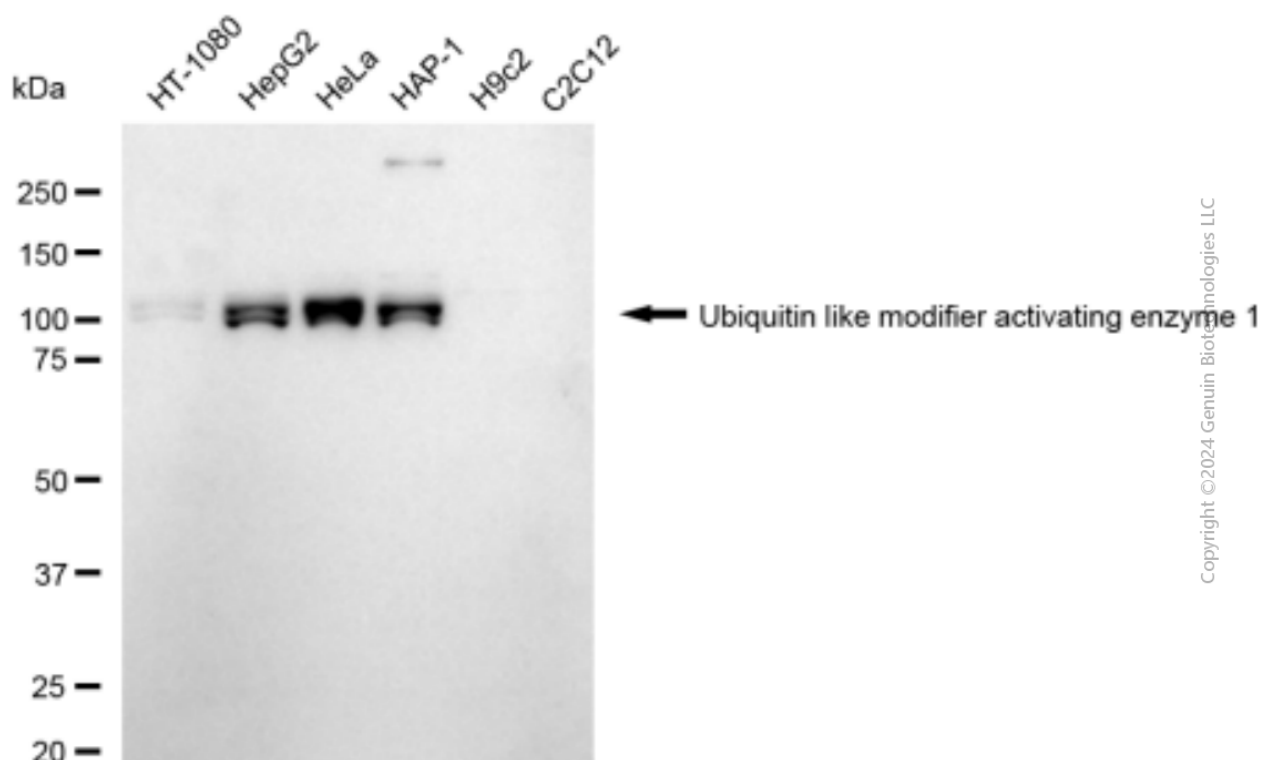
SALES@GENUINBIOTECH.COM  
FAX: +1-540-855-7041

WWW.GENUINBIOTECH.COM

## Anti-Ubiquitin Like Modifier Activating Enzyme 1 Recombinant Rabbit Monoclonal

PAGE 3

Immunocytochemical staining of HepG2 cells with anti-Ubiquitin like modifier activating enzyme 1 antibody (Cat#2729, 1:1,000). Nuclei were stained blue with DAPI; Ubiquitin like modifier activating enzyme 1 was stained magenta with Alexa Fluor® 647. Images were taken using Leica stellaris 5. Protein abundance based on laser Intensity and smart gain: Medium. Scale bar: 20  $\mu$ m.



Western blotting analysis using anti-Ubiquitin like modifier activating enzyme 1 antibody (Cat#2729). Total cell lysates (30  $\mu$ g) from various cell lines were loaded and separated by SDS-PAGE. The blot was incubated with anti-Ubiquitin like modifier activating enzyme 1 antibody (Cat#2729, 1:5,000) and HRP-conjugated goat anti-rabbit secondary antibody (Cat#201, 1:20,000) respectively. Image was developed using FeQ™ ECL Substrate Kit (Cat#226).

### SUPPORT

SUPPORT@GENUINBIOTECH.COM  
TEL: +1-540-855-7041

### ORDERS

SALES@GENUINBIOTECH.COM  
FAX: +1-540-855-7041

WWW.GENUINBIOTECH.COM