

Anti-Transforming Growth Factor Alpha Recombinant Rabbit Monoclonal Antibody



Catalog #: 2731

Aliases

TGFA; Transforming Growth Factor Alpha; Protransforming Growth Factor Alpha; Transforming Growth Factor, Alpha; TGF-Alpha; TFGA

Background

Gene Name: TGFA

NCBI Gene Entry: [7039](#)

UniProt Entry: [P01135](#)

Application Information

Molecular Weight: Predicted, 17 kDa; observed, 15 kDa

Clonality: Rabbit monoclonal antibody

Clone ID: 24GB2455

Species Reactivity: Human

Applications Tested: Western blotting (WB), flow cytometry (FCM), immunocytochemistry (IC)

Immunogen

A synthesized peptide derived from human TGF alpha

Isotype

Rabbit IgG

Storage Buffer

Supplied in PBS (pH 7.4) containing 50% glycerol, and 0.02% sodium azide.

Storage

Store at -20 °C for one year.

Recommended Dilutions

Western Blotting (WB): 1:1,000-1:5,000

Flow Cytometry (FCM): 1:2,000

Immunocytochemistry (IC): 1:100-1:1,000

Note: This product is for research use only.

Validation Data

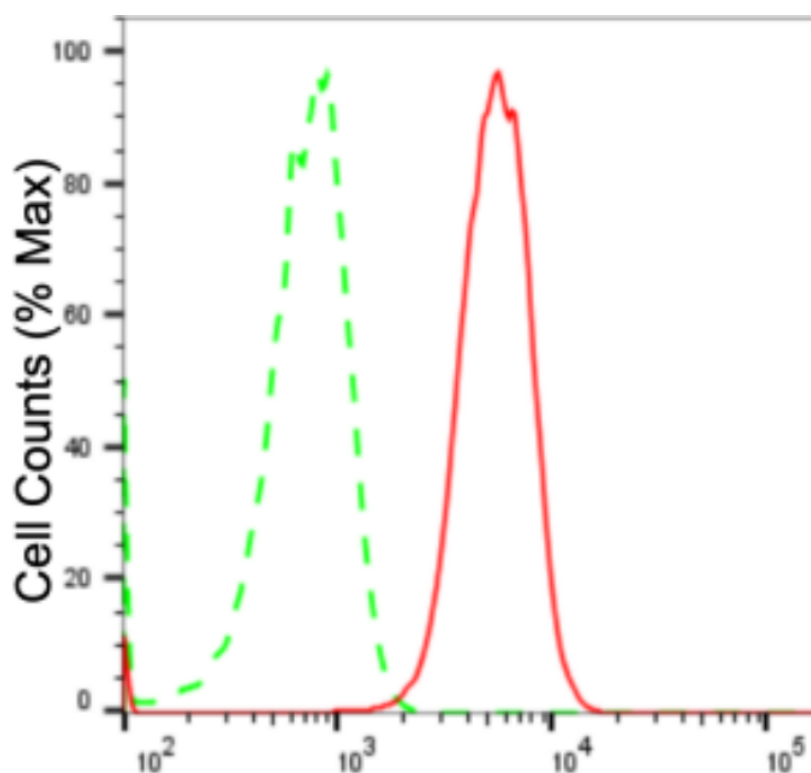
SUPPORT

SUPPORT@GENUINBIOTECH.COM
TEL: +1-540-855-7041

ORDERS

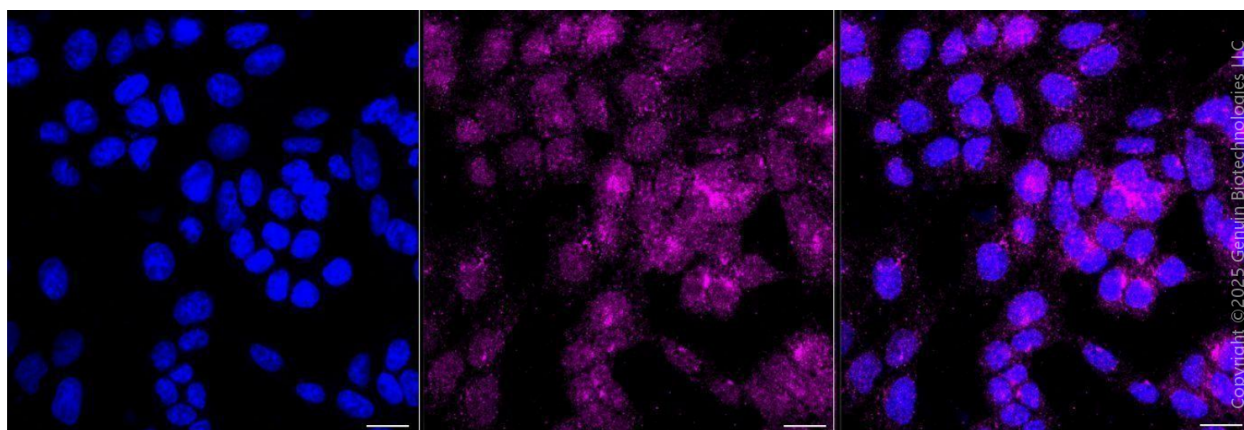
SALES@GENUINBIOTECH.COM
FAX: +1-540-855-7041

WWW.GENUINBIOTECH.COM



Copyright ©2024 Genuin Biotechnologies LLC

Flow cytometric analysis of Transforming growth factor alpha expression in HAP-1 cells using anti-Transforming growth factor alpha antibody (Cat#2731, 1:2,000). Green, isotype control; red, Transforming growth factor alpha.

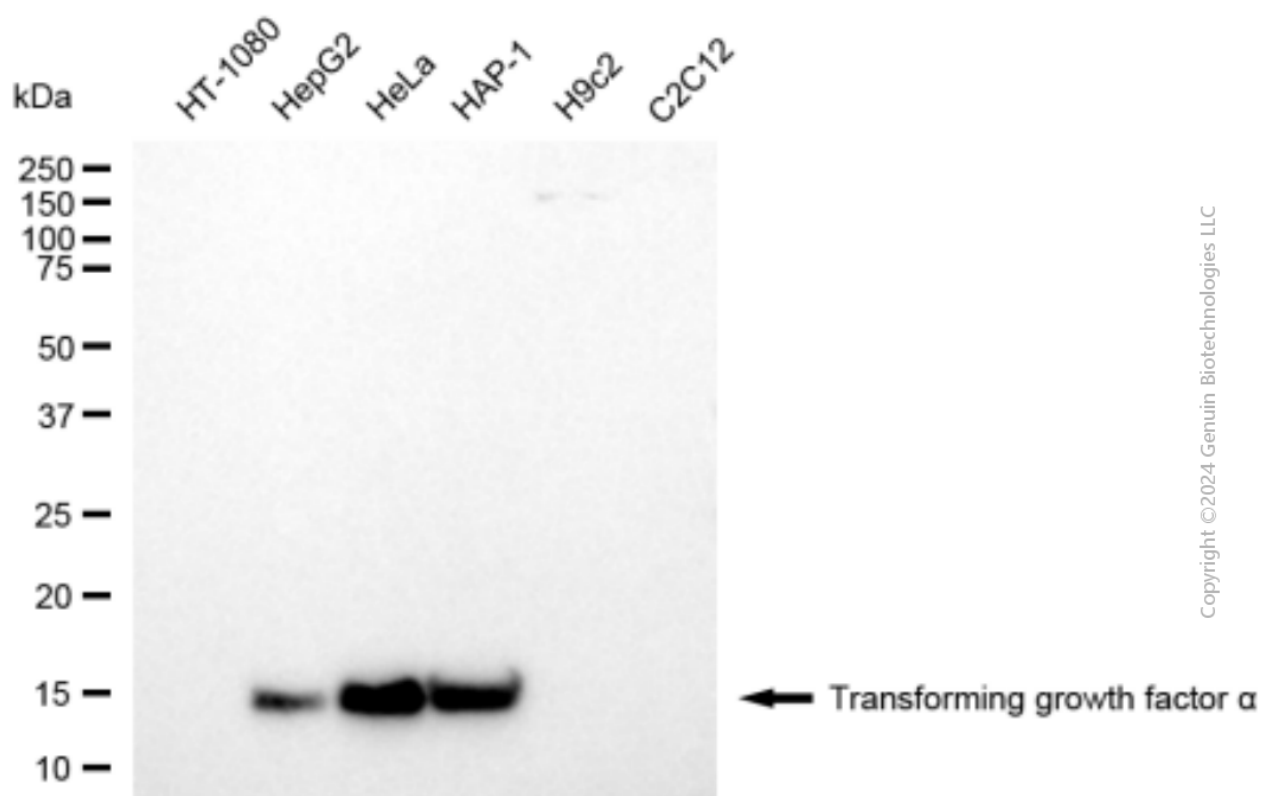


Copyright ©2025 Genuin Biotechnologies LLC

Immunocytochemical staining of HAP-1 cells with anti-Transforming growth factor alpha antibody (Cat#2731, 1:1,000). Nuclei were stained blue with DAPI; Transforming growth factor alpha was stained magenta with Alexa Fluor® 647. Images were taken using Leica stellaris 5. Protein abundance based on laser Intensity and smart gain: Medium. Scale bar, 20 μ m.

Anti-Transforming Growth Factor Alpha Recombinant Rabbit Monoclonal Antibody

PAGE 3



Western blotting analysis using anti-transforming growth factor alpha antibody (Cat#2731). Total cell lysates (30 µg) from various cell lines were loaded and separated by SDS-PAGE. The blot was incubated with anti-transforming growth factor alpha antibody (Cat#2731, 1:5,000) and HRP-conjugated goat anti-rabbit secondary antibody (Cat#201, 1:20,000) respectively. Image was developed using FeQ™ ECL Substrate Kit (Cat#226).

SUPPORT

SUPPORT@GENUINBIOTECH.COM
TEL: +1-540-855-7041

ORDERS

SALES@GENUINBIOTECH.COM
FAX: +1-540-855-7041

WWW.GENUINBIOTECH.COM