

Anti-Solute Carrier Family 3 Member 2 Recombinant Rabbit Monoclonal Antibody



Catalog #: 2734

Aliases

SLC3A2; Solute Carrier Family 3 Member 2; Lymphocyte Activation Antigen 4F2 Large Subunit; 4F2 Cell-Surface Antigen Heavy Chain; CD98HC; 4T2HC; NACAE; 4F2HC; CD98; MDU1; 4F2; Solute Carrier Family 3 (Activators Of Dibasic And Neutral Amino Acid Transport), Member 2; Antigen Identified By Monoclonal Antibodies 4F2, TRA1.10, TROP4, And T43; Solute Carrier Family 3 (Amino Acid Transporter Heavy Chain), Member 2; Amino Acid Transporter Heavy Chain SLC3A2; Monoclonal Antibody 44D7; CD98 Heavy Chain; Antigen Defined By Monoclonal Antibody 4F2, Heavy Chain; Antigen Defined By Monoclonal Antibody 4F2; 4F2 Heavy Chain Antigen; 4F2 Heavy Chain; CD98 Antigen; Heavy Chain; 4F2hc

Background

Gene Name: SLC3A2

NCBI Gene Entry: [6520](#)

UniProt Entry: [P08195](#)

Application Information

Molecular Weight: Predicted, 68 kDa; observed, 80 kDa

Clonality: Rabbit monoclonal antibody

Clone ID: 24GB2505

Species Reactivity: Human

Applications Tested: Western blotting (WB), immunocytochemistry (IC)

Immunogen

A synthesized peptide derived from human CD98

Isotype

Rabbit IgG

Storage Buffer

Supplied in PBS (pH 7.4) containing 50% glycerol, and 0.02% sodium azide.

Storage

Store at -20 °C for one year.

Recommended Dilutions

Western Blotting (WB): 1:1,000-1:5,000

SUPPORT

SUPPORT@GENUINBIOTECH.COM
TEL: +1-540-855-7041

ORDERS

SALES@GENUINBIOTECH.COM
FAX: +1-540-855-7041

WWW.GENUINBIOTECH.COM

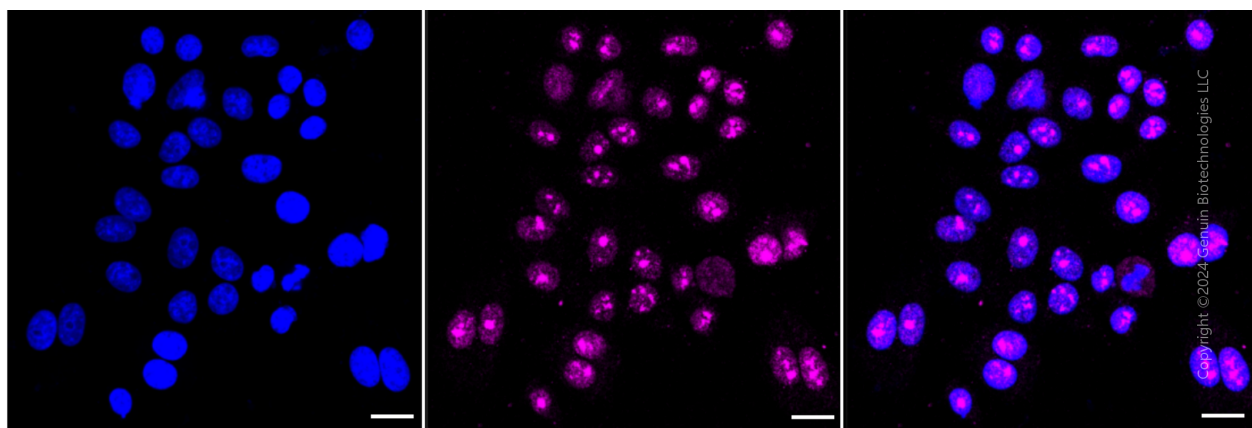
Anti-Solute Carrier Family 3 Member 2 Recombinant Rabbit Monoclonal Antibody

PAGE 2

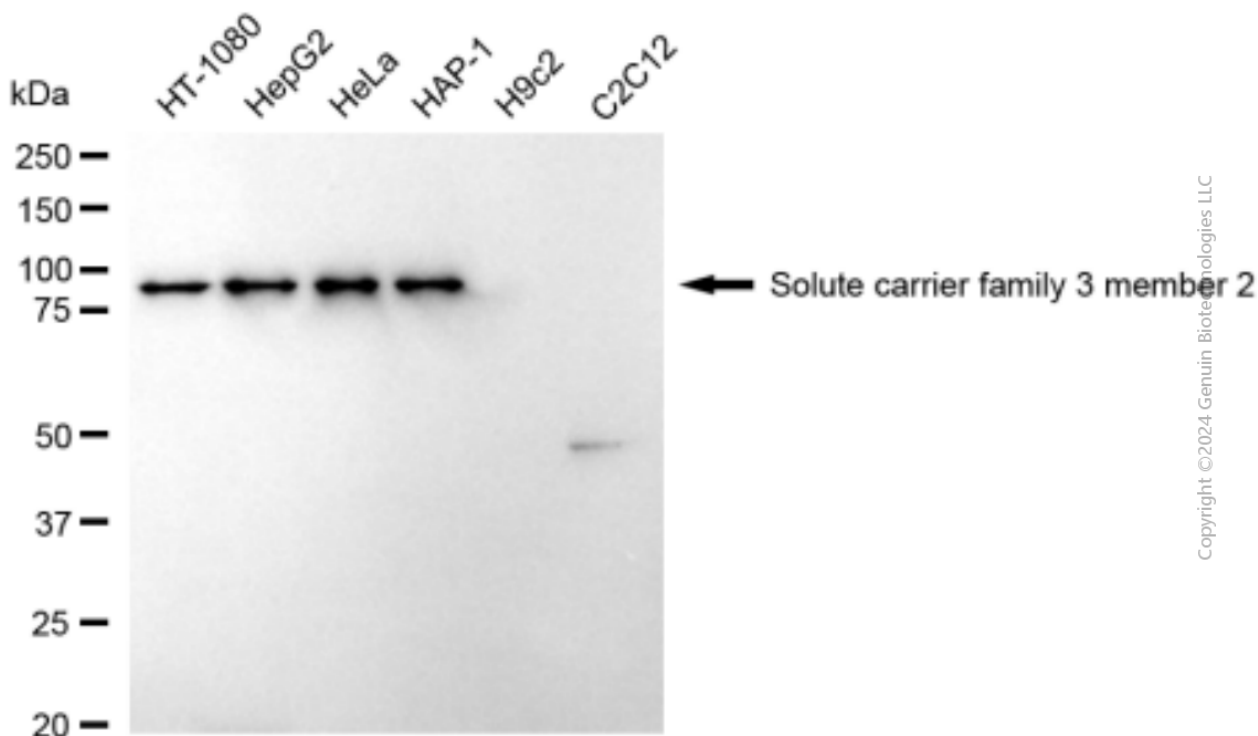
Immunocytochemistry (IC): 1:100-1:1,000

Note: This product is for research use only.

Validation Data



Immunocytochemical staining of HepG2 cells with anti-Solute carrier family 3 member 2 antibody (Cat#2734, 1:1,000). Nuclei were stained blue with DAPI; Solute carrier family 3 member 2 was stained magenta with Alexa Fluor® 647. Images were taken using Leica stellaris 5. Protein abundance based on laser Intensity and smart gain: Medium. Scale bar: 20 µm.



Western blotting analysis using anti-Solute carrier family 3 member 2 antibody (Cat#2734). Total cell lysates (30 µg) from various cell lines were loaded and separated by SDS-PAGE. The blot was

SUPPORT

SUPPORT@GENUINBIOTECH.COM
TEL: +1-540-855-7041

ORDERS

SALES@GENUINBIOTECH.COM
FAX: +1-540-855-7041

WWW.GENUINBIOTECH.COM

Anti-Solute Carrier Family 3 Member 2 Recombinant Rabbit Monoclonal Antibody

PAGE 3

incubated with anti-Solute carrier family 3 member 2 antibody (Cat#2734, 1:5,000) and HRP-conjugated goat anti-rabbit secondary antibody (Cat#201, 1:20,000) respectively. Image was developed using FeQ™ ECL Substrate Kit (Cat#226).

SUPPORT

SUPPORT@GENUINBIOTECH.COM
TEL: +1-540-855-7041

ORDERS

SALES@GENUINBIOTECH.COM
FAX: +1-540-855-7041

WWW.GENUINBIOTECH.COM