

Anti-Solute Carrier Family 22 Member 1 Recombinant Rabbit Monoclonal Antibody



Catalog #: 2735

Aliases

SLC22A1; Solute Carrier Family 22 Member 1; OCT1; Organic Cation Transporter 1; Solute Carrier Family 22 (Organic Cation Transporter), Member 1; HOCT1; Oct1_cds

Background

Gene Name: SLC22A1

NCBI Gene Entry: [6580](#)

UniProt Entry: [O15245](#)

Application Information

Molecular Weight: Predicted, 61 kDa; observed, 72 kDa

Clonality: Rabbit monoclonal antibody

Clone ID: 24GB2510

Species Reactivity: Human

Applications Tested: Western blotting (WB), flow cytometry (FCM), immunocytochemistry (IC)

Immunogen

A synthesized peptide derived from human SLC22A1

Isotype

Rabbit IgG

Storage Buffer

Supplied in PBS (pH 7.4) containing 50% glycerol, and 0.02% sodium azide.

Storage

Store at -20 °C for one year.

Recommended Dilutions

Western Blotting (WB): 1:1,000-1:5,000

Flow Cytometry (FCM): 1:2,000

Immunocytochemistry (IC): 1:100-1:1,000

Note: This product is for research use only.

Validation Data

SUPPORT

SUPPORT@GENUINBIOTECH.COM
TEL: +1-540-855-7041

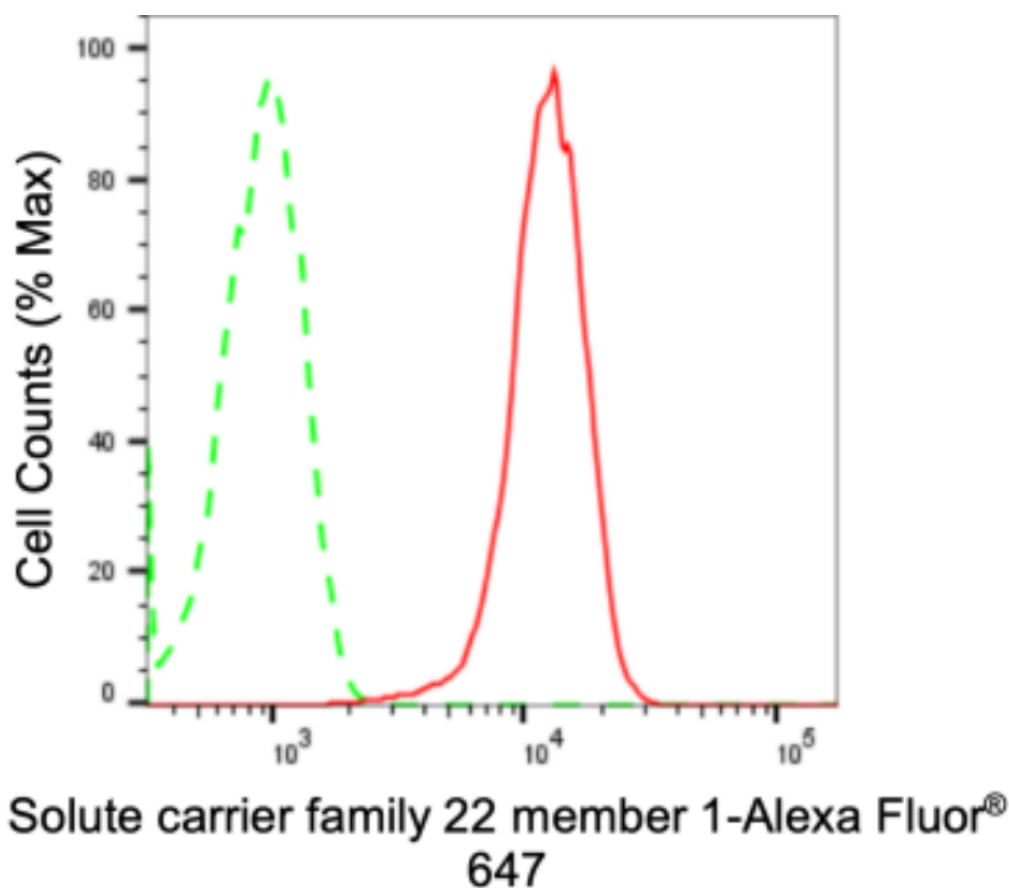
ORDERS

SALES@GENUINBIOTECH.COM
FAX: +1-540-855-7041

WWW.GENUINBIOTECH.COM

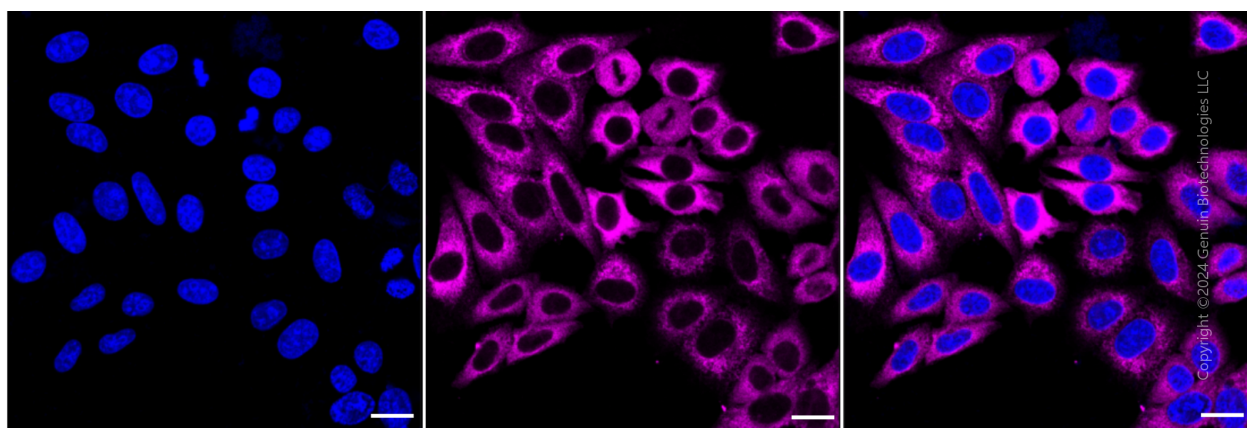
Anti-Solute Carrier Family 22 Member 1 Recombinant Rabbit Monoclonal Antibody

PAGE 2



Copyright ©2024 Genuin Biotechnologies LLC

Flow cytometric analysis of Solute carrier family 22 member 1 expression in HepG2 cells using anti-Solute carrier family 22 member 1 antibody (Cat#2735, 1:2,000). Green, isotype control; red, Solute carrier family 22 member 1.



Immunocytochemical staining of HepG2 cells with anti-Solute carrier family 22 member 1 antibody (Cat#2735, 1:1,000). Nuclei were stained blue with DAPI; Solute carrier family 22 member 1 was stained magenta with Alexa Fluor® 647. Images were taken using Leica stellaris 5. Protein abundance based on laser Intensity and smart gain: High. Scale bar: 20 µm.

SUPPORT

SUPPORT@GENUINBIOTECH.COM
TEL: +1-540-855-7041

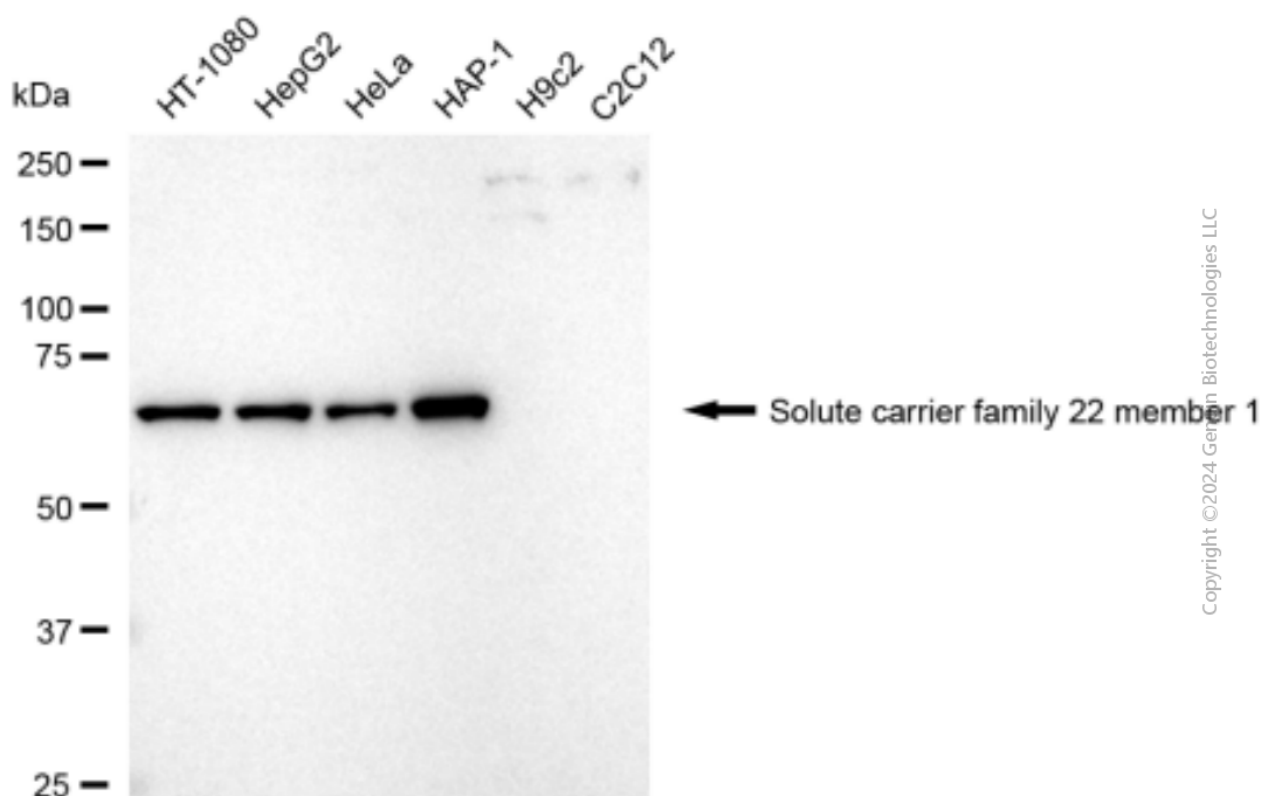
ORDERS

SALES@GENUINBIOTECH.COM
FAX: +1-540-855-7041

WWW.GENUINBIOTECH.COM

Anti-Solute Carrier Family 22 Member 1 Recombinant Rabbit Monoclonal Antibody

PAGE 3



Western blotting analysis using anti-solute carrier family 22 member 1 antibody (Cat#2735). Total cell lysates (30 µg) from various cell lines were loaded and separated by SDS-PAGE. The blot was incubated with anti-solute carrier family 22 member 1 antibody (Cat#2735, 1:5,000) and HRP-conjugated goat anti-rabbit secondary antibody (Cat#201, 1:20,000) respectively. Image was developed using FeQ™ ECL Substrate Kit (Cat#226).

SUPPORT

SUPPORT@GENUINBIOTECH.COM
TEL: +1-540-855-7041

ORDERS

SALES@GENUINBIOTECH.COM
FAX: +1-540-855-7041

WWW.GENUINBIOTECH.COM