

# Anti-UBE2N Recombinant Rabbit Monoclonal Antibody



**Catalog #: 2738**

## Aliases

UBE2N; Ubiquitin Conjugating Enzyme E2 N; UbcH-Ben; UBC13; Ubiquitin-Conjugating Enzyme E2N (Homologous To Yeast UBC13); Ubiquitin-Conjugating Enzyme E2N (UBC13 Homolog, Yeast); Ubiquitin-Conjugating Enzyme E2 N; E2 Ubiquitin-Conjugating Enzyme N; Ubiquitin Carrier Protein N; Ubiquitin-Protein Ligase N; MGC8489; UbcH13; Bendless-Like Ubiquitin Conjugating Enzyme; Bendless-Like Ubiquitin-Conjugating Enzyme; Epididymis Secretory Protein Li 71; Ubiquitin-Conjugating Enzyme E2N; Ubiquitin Conjugating Enzyme E2N; Yeast UBC13 Homolog; UBCHBEN; UBC13; EC 2.3.2.23; EC 6.3.2.19; HEL-S-71; UBCHBEN; Ubc13; BLU

## Background

Gene Name: UBE2N

NCBI Gene Entry: [7334](#)

UniProt Entry: [P61088](#)

## Application Information

Molecular Weight: Predicted, 17 kDa; observed, 17 kDa

Clonality: Rabbit monoclonal antibody

Clone ID: 24GB2555

Species Reactivity: Human, mouse, rat

Applications Tested: Western blotting (WB), flow cytometry (FCM), immunocytochemistry (IC)

## Immunogen

A synthesized peptide derived from human Ube2N / Ubc13

## Isotype

Rabbit IgG

## Storage Buffer

Supplied in PBS (pH 7.4) containing 50% glycerol, and 0.02% sodium azide.

## Storage

Store at -20 °C for one year.

## Recommended Dilutions

Western Blotting (WB): 1:1,000-1:5,000

---

### SUPPORT

SUPPORT@GENUINBIOTECH.COM  
TEL: +1-540-855-7041

### ORDERS

SALES@GENUINBIOTECH.COM  
FAX: +1-540-855-7041

[WWW.GENUINBIOTECH.COM](http://WWW.GENUINBIOTECH.COM)

# Anti-UBE2N Recombinant Rabbit Monoclonal Antibody

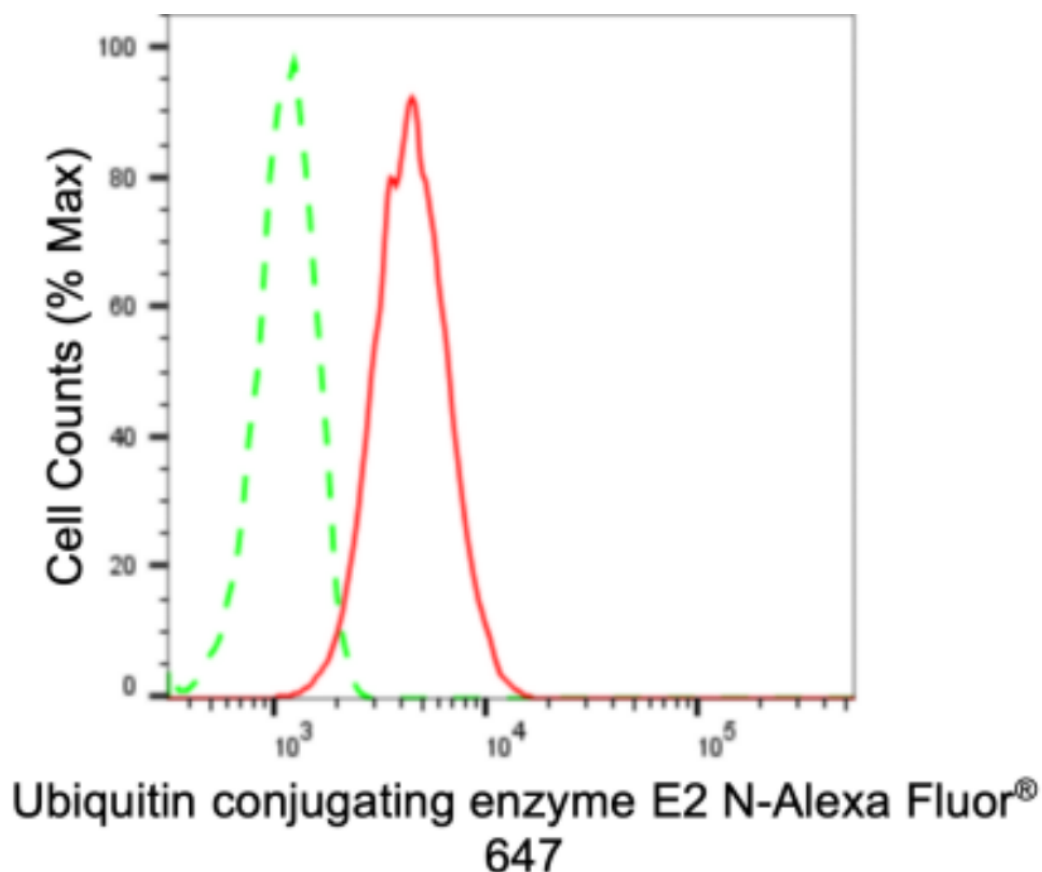
PAGE 2

Flow Cytometry (FCM): 1:2,000

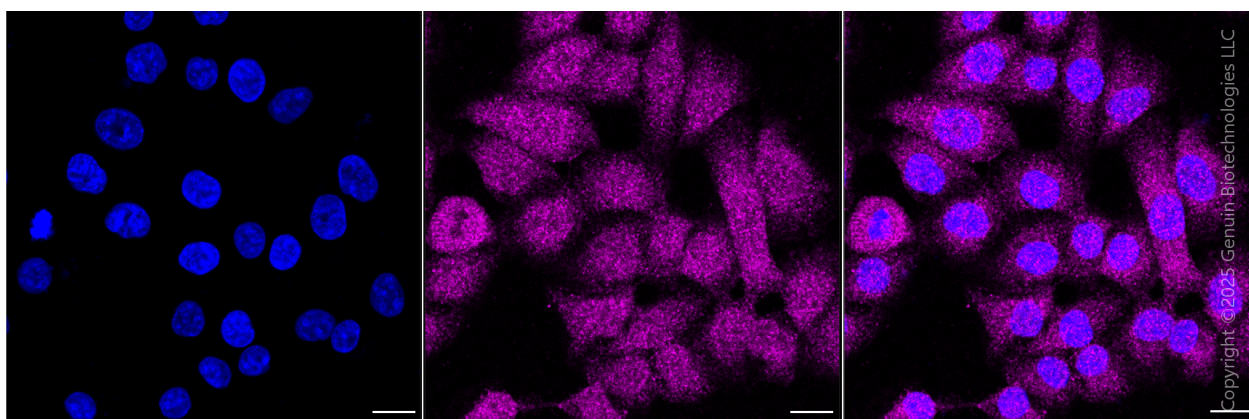
Immunocytochemistry (IC): 1:100-1:1,000

**Note:** This product is for research use only.

## Validation Data



Flow cytometric analysis of Ubiquitin conjugating enzyme E2 N expression in HT-1080 cells using anti-Ubiquitin conjugating enzyme E2 N antibody (Cat#2738, 1:2,000). Green, isotype control; red, Ubiquitin conjugating enzyme E2 N.



### SUPPORT

SUPPORT@GENUINBIOTECH.COM  
TEL: +1-540-855-7041

### ORDERS

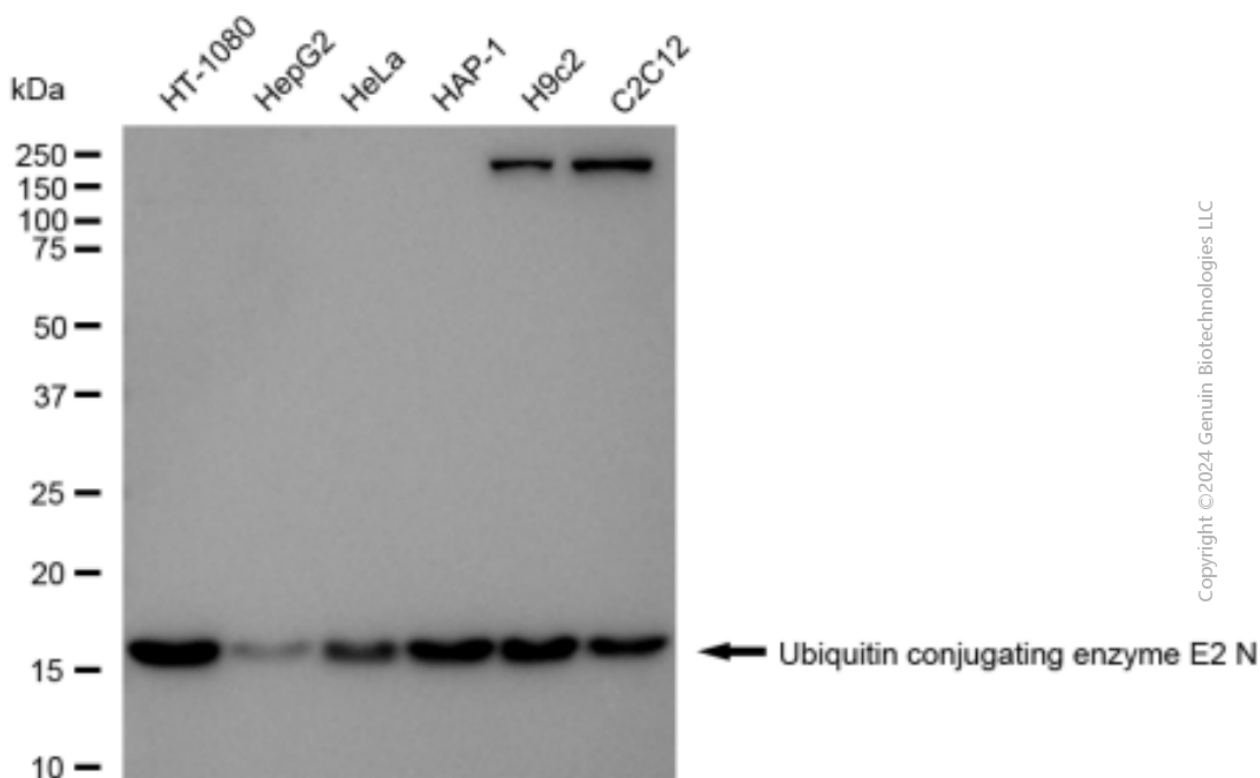
SALES@GENUINBIOTECH.COM  
FAX: +1-540-855-7041

WWW.GENUINBIOTECH.COM

## Anti-UBE2N Recombinant Rabbit Monoclonal Antibody

PAGE 3

Immunocytochemical staining of HT-1080 cells with anti-Ubiquitin conjugating enzyme E2 N antibody (Cat#2738, 1:1,000). Nuclei were stained blue with DAPI; Ubiquitin conjugating enzyme E2 N was stained magenta with Alexa Fluor® 647. Images were taken using Leica stellaris 5. Protein abundance based on laser Intensity and smart gain: Medium. Scale bar, 20 µm.



Western blotting analysis using anti-ubiquitin conjugating enzyme E2 N antibody (Cat#2738). Total cell lysates (30 µg) from various cell lines were loaded and separated by SDS-PAGE. The blot was incubated with anti-ubiquitin conjugating enzyme E2 N antibody (Cat#2738, 1:5,000) and HRP-conjugated goat anti-rabbit secondary antibody (Cat#201, 1:20,000) respectively. Image was developed using FeQ™ ECL Substrate Kit (Cat#226).

### SUPPORT

SUPPORT@GENUINBIOTECH.COM  
TEL: +1-540-855-7041

### ORDERS

SALES@GENUINBIOTECH.COM  
FAX: +1-540-855-7041

[WWW.GENUINBIOTECH.COM](http://WWW.GENUINBIOTECH.COM)