

Anti-TLE1 Recombinant Rabbit Monoclonal Antibody



Catalog #: 2742

Aliases

TLE1; TLE Family Member 1, Transcriptional Corepressor; ESG1; TLE-1; GRG1; ESG; Transducin-Like Enhancer Of Split 1 (E(Sp1) Homolog, Drosophila); Enhancer Of Split Groucho-Like Protein 1; Transducin Like Enhancer Of Split 1; Transducin-Like Enhancer Protein 1; Enhancer Of Split Groucho 1; E(Sp1) Homolog

Background

Gene Name: TLE1

NCBI Gene Entry: [7088](#)

UniProt Entry: [Q04724](#)

Application Information

Molecular Weight: Predicted, 83 kDa; observed, 83 kDa

Clonality: Rabbit monoclonal antibody

Clone ID: 24GB2620

Species Reactivity: Human, mouse, rat

Applications Tested: Western blotting (WB), flow cytometry (FCM), immunocytochemistry (IC)

Immunogen

A synthesized peptide derived from human TLE 1

Isotype

Rabbit IgG

Storage Buffer

Supplied in PBS (pH 7.4) containing 50% glycerol, and 0.02% sodium azide.

Storage

Store at -20 °C for one year.

Recommended Dilutions

Western Blotting (WB): 1:1,000-1:5,000

Flow Cytometry (FCM): 1:2,000

Immunocytochemistry (IC): 1:100-1:1,000

SUPPORT

SUPPORT@GENUINBIOTECH.COM
TEL: +1-540-855-7041

ORDERS

SALES@GENUINBIOTECH.COM
FAX: +1-540-855-7041

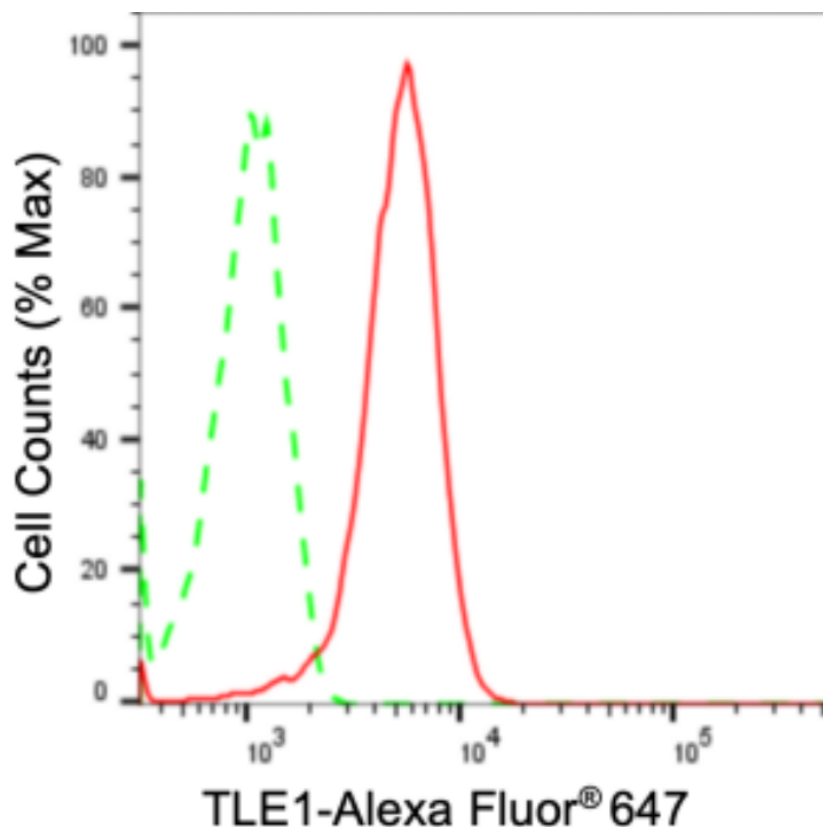
WWW.GENUINBIOTECH.COM

Anti-TLE1 Recombinant Rabbit Monoclonal Antibody

PAGE 2

Note: This product is for research use only.

Validation Data



Copyright ©2024 Genuin Biotechnologies LLC

Flow cytometric analysis of TLE1 expression in HeLa cells using anti-TLE1 antibody (Cat#2742, 1:2,000). Green, isotype control; red, TLE1.



Copyright ©2025 Genuin Biotechnologies LLC

Immunocytochemical staining of HeLa cells with anti-TLE1 antibody (Cat#2742, 1:1,000). Nuclei were stained blue with DAPI; TLE1 was stained magenta with Alexa Fluor® 647. Images were taken using Leica stellaris 5. Protein abundance based on laser Intensity and smart gain: Medium. Scale bar, 20 μm.

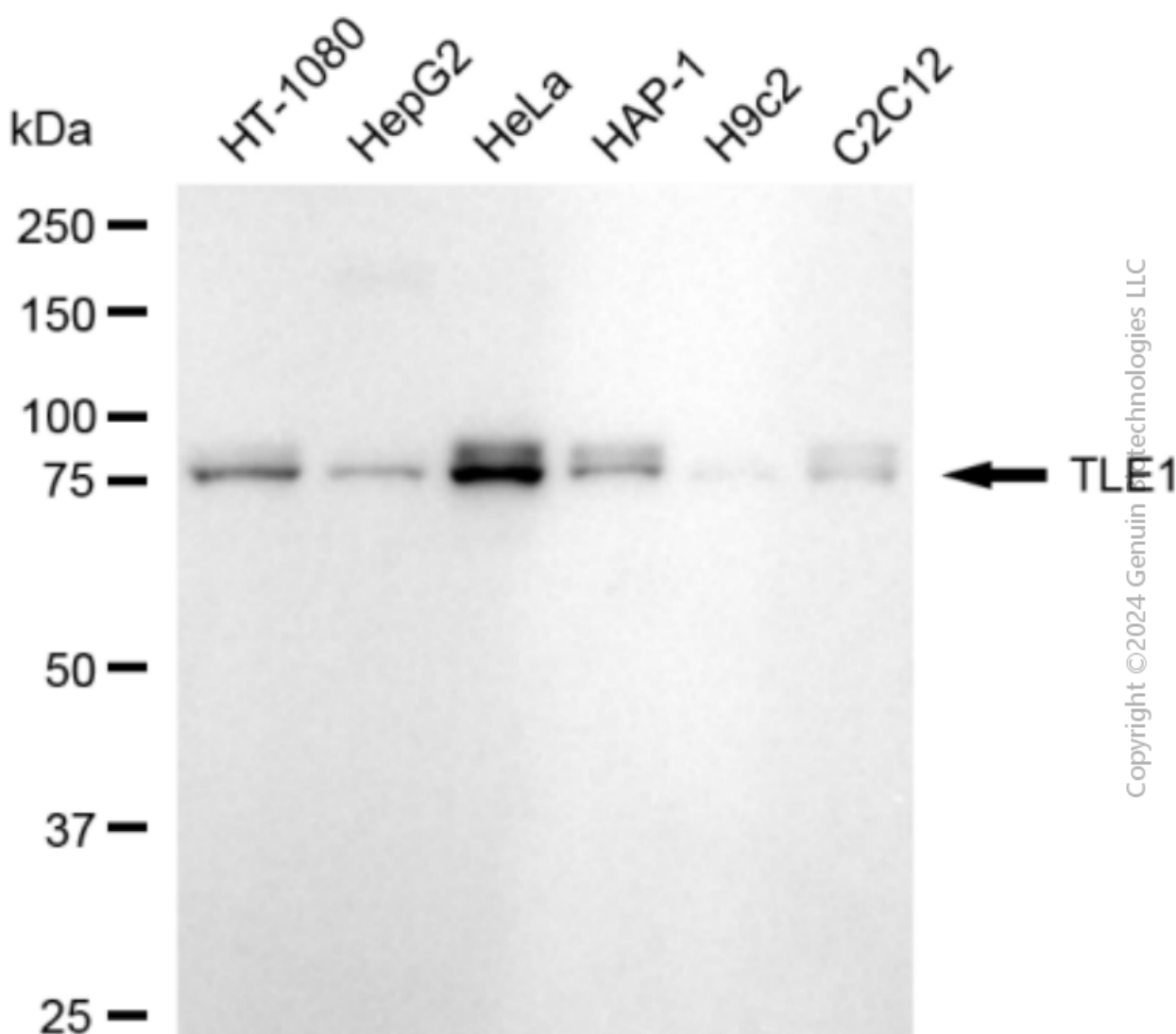
SUPPORT

SUPPORT@GENUINBIOTECH.COM
TEL: +1-540-855-7041

ORDERS

SALES@GENUINBIOTECH.COM
FAX: +1-540-855-7041

WWW.GENUINBIOTECH.COM



Copyright © 2024 Genuin Biotechnologies LLC

Western blotting analysis using anti-TLE1 antibody (Cat#2742). Total cell lysates (30 µg) from various cell lines were loaded and separated by SDS-PAGE. The blot was incubated with anti-TLE1 antibody (Cat#2742, 1:5,000) and HRP-conjugated goat anti-rabbit secondary antibody (Cat#201, 1:20,000) respectively. Image was developed using FeQ™ ECL Substrate Kit (Cat#226).