

# Anti-UBA7 Recombinant Rabbit Monoclonal Antibody



**Catalog #: 2743**

## Aliases

UBA7; Ubiquitin Like Modifier Activating Enzyme 7; UBE2; D8; UBA1B; UBE1L; Ubiquitin-Like Modifier-Activating Enzyme 7; Ubiquitin-Activating Enzyme E1 Homolog; UBA7, Ubiquitin-Activating Enzyme E1; Ubiquitin-Activating Enzyme 7; UBA1, Ubiquitin-Activating Enzyme E1 Homolog B (Yeast); UBA1, Ubiquitin-Activating Enzyme E1 Homolog B; Ubiquitin-Activating Enzyme E1-Related Protein; Ubiquitin-Like Modifier Activating Enzyme 7; Ubiquitin-Activating Enzyme E1-Like; Ubiquitin-Activating Enzyme-2; UBE7

## Background

Gene Name: UBA7

NCBI Gene Entry: [7318](#)

UniProt Entry: [P41226](#)

## Application Information

Molecular Weight: Predicted, 112 kDa; observed, 112 kDa

Clonality: Rabbit monoclonal antibody

Clone ID: 24GB2660

Species Reactivity: Human, mouse, rat

Applications Tested: Western blotting (WB), flow cytometry (FCM), immunocytochemistry (IC)

## Immunogen

A synthesized peptide derived from human Ube1L / UBA7

## Isotype

Rabbit IgG

## Storage Buffer

Supplied in PBS (pH 7.4) containing 50% glycerol, and 0.02% sodium azide.

## Storage

Store at -20 °C for one year.

## Recommended Dilutions

Western Blotting (WB): 1:1,000-1:5,000

Flow Cytometry (FCM): 1:2,000

Immunocytochemistry (IC): 1:100-1:1,000

---

### SUPPORT

SUPPORT@GENUINBIOTECH.COM  
TEL: +1-540-855-7041

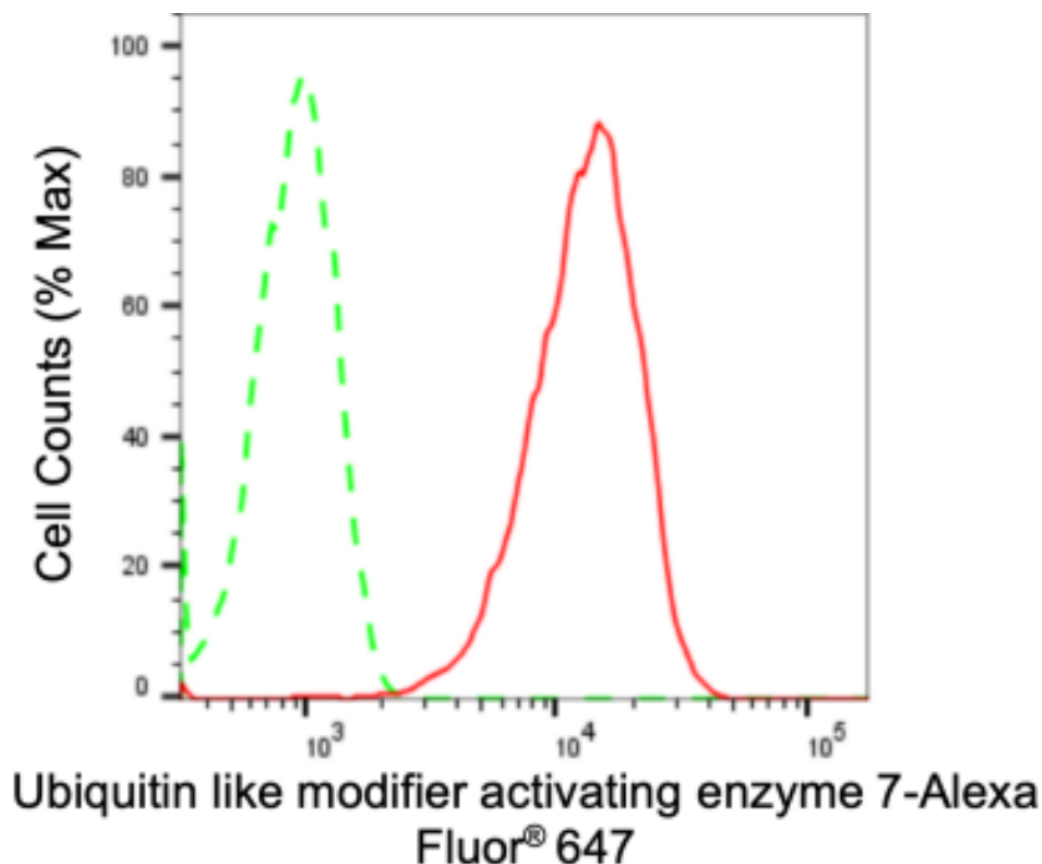
### ORDERS

SALES@GENUINBIOTECH.COM  
FAX: +1-540-855-7041

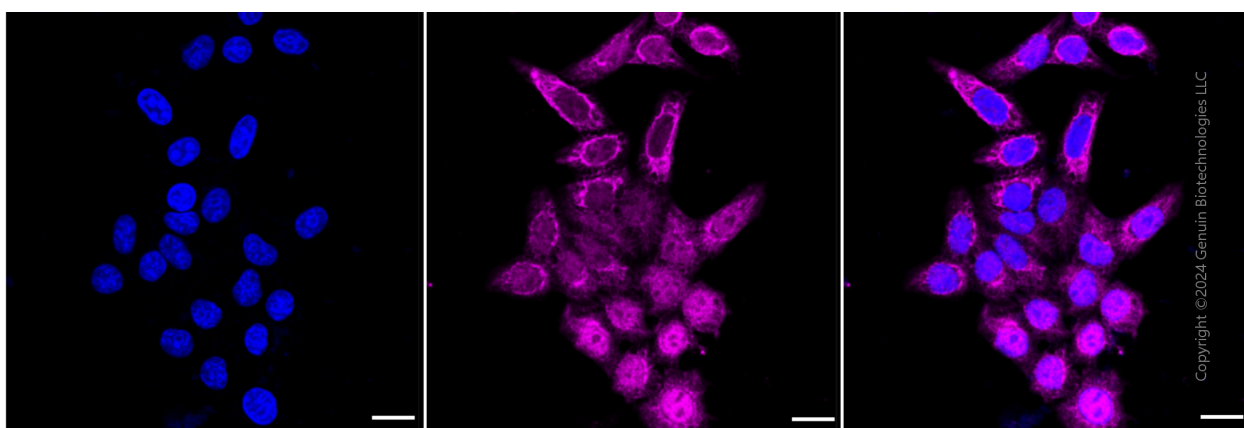
[WWW.GENUINBIOTECH.COM](http://WWW.GENUINBIOTECH.COM)

**Note:** This product is for research use only.

## Validation Data



Flow cytometric analysis of Ubiquitin like modifier activating enzyme 7 expression in HepG2 cells using anti-Ubiquitin like modifier activating enzyme 7 antibody (Cat#2743, 1:2,000). Green, isotype control; red, Ubiquitin like modifier activating enzyme 7.



Immunocytochemical staining of HepG2 cells with anti-Ubiquitin like modifier activating enzyme 7 antibody (Cat#2743, 1:1,000). Nuclei were stained blue with DAPI; Ubiquitin like modifier

### SUPPORT

SUPPORT@GENUINBIOTECH.COM  
TEL: +1-540-855-7041

### ORDERS

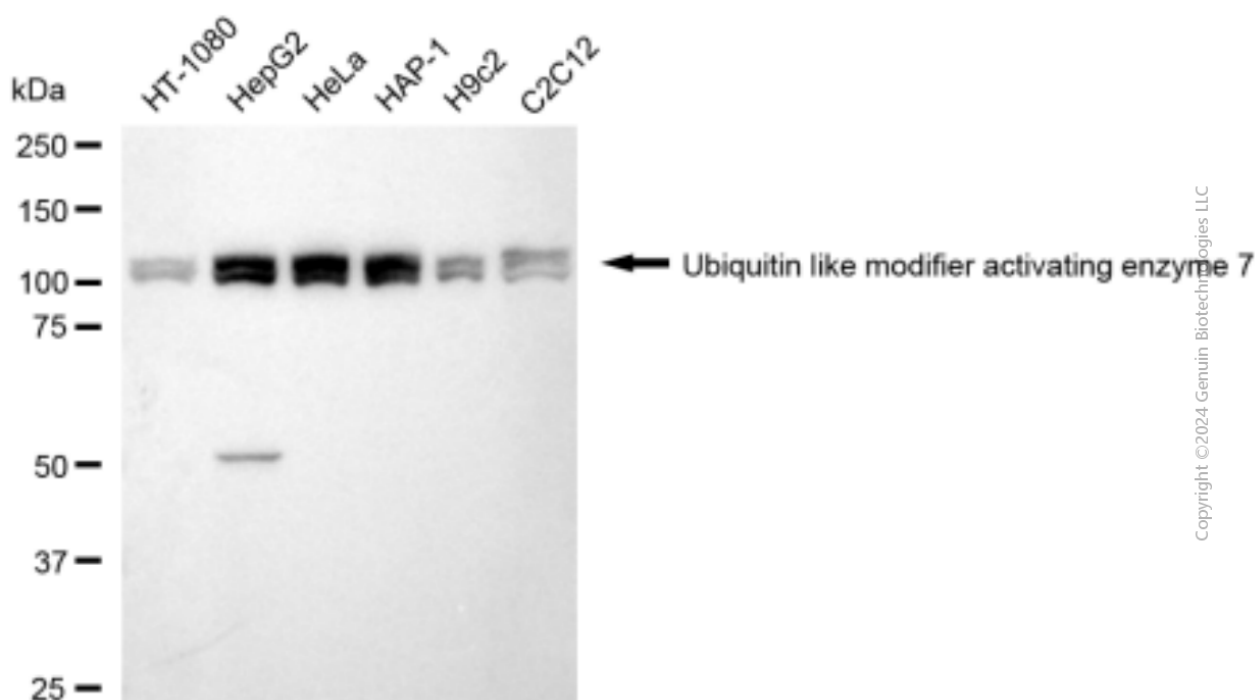
SALES@GENUINBIOTECH.COM  
FAX: +1-540-855-7041

WWW.GENUINBIOTECH.COM

## Anti-UBA7 Recombinant Rabbit Monoclonal Antibody

PAGE 3

activating enzyme 7 was stained magenta with Alexa Fluor® 647. Images were taken using Leica stellaris 5. Protein abundance based on laser Intensity and smart gain: High. Scale bar: 20 µm.



Western blotting analysis using anti-Ubiquitin like modifier activating enzyme 7 antibody (Cat#2743). Total cell lysates (30 µg) from various cell lines were loaded and separated by SDS-PAGE. The blot was incubated with anti-Ubiquitin like modifier activating enzyme 7 antibody (Cat#2743, 1:5,000) and HRP-conjugated goat anti-rabbit secondary antibody (Cat#201, 1:20,000) respectively. Image was developed using FeQ™ ECL Substrate Kit (Cat#226).

### SUPPORT

SUPPORT@GENUINBIOTECH.COM  
TEL: +1-540-855-7041

### ORDERS

SALES@GENUINBIOTECH.COM  
FAX: +1-540-855-7041

[WWW.GENUINBIOTECH.COM](http://WWW.GENUINBIOTECH.COM)