

Anti-Wnt Family Member 5B Recombinant Rabbit Monoclonal Antibody



Catalog #: 2744

Aliases

WNT5B; Wnt Family Member 5B; Wingless-Type MMTV Integration Site Family, Member 5B; Protein Wnt-5b; WNT-5B Protein

Background

Gene Name: WNT5B

NCBI Gene Entry: [81029](#)

UniProt Entry: [Q9H1J7](#)

Application Information

Molecular Weight: Predicted, 40 kDa; observed, 45 kDa

Clonality: Rabbit monoclonal antibody

Clone ID: 24GB2690

Species Reactivity: Human, mouse, rat

Applications Tested: Western blotting (WB), flow cytometry (FCM), immunocytochemistry (IC)

Immunogen

A synthesized peptide derived from human Wnt5b

Isotype

Rabbit IgG

Storage Buffer

Supplied in PBS (pH 7.4) containing 50% glycerol, and 0.02% sodium azide.

Storage

Store at -20 °C for one year.

Recommended Dilutions

Western Blotting (WB): 1:1,000-1:5,000

Flow Cytometry (FCM): 1:2,000

Immunocytochemistry (IC): 1:100-1:1,000

Note: This product is for research use only.

Validation Data

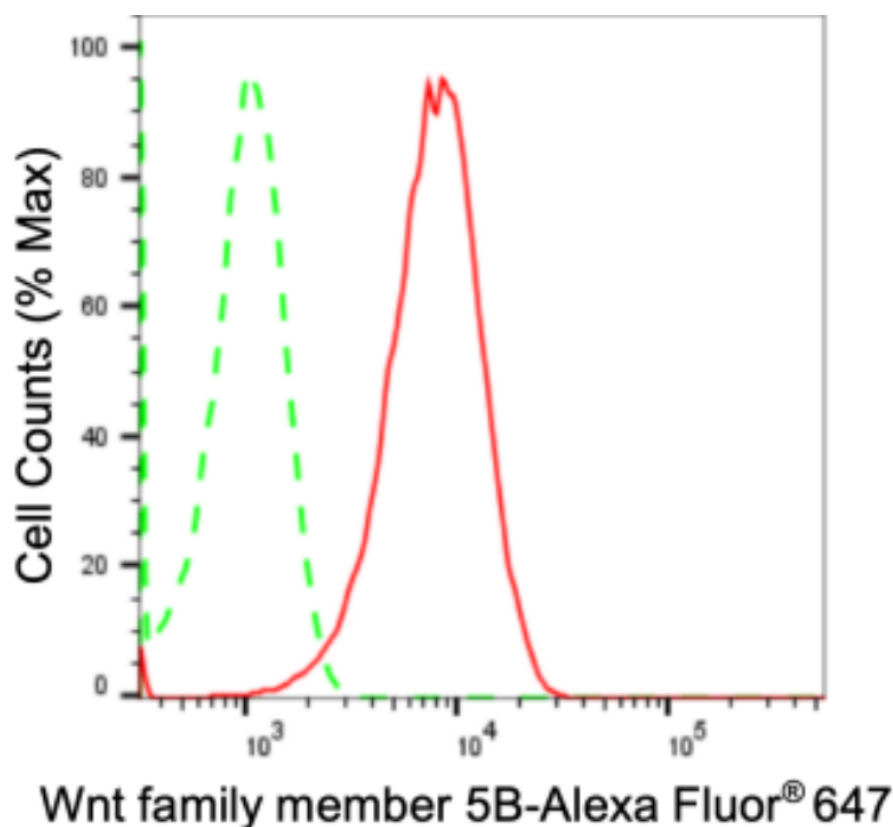
SUPPORT

SUPPORT@GENUINBIOTECH.COM
TEL: +1-540-855-7041

ORDERS

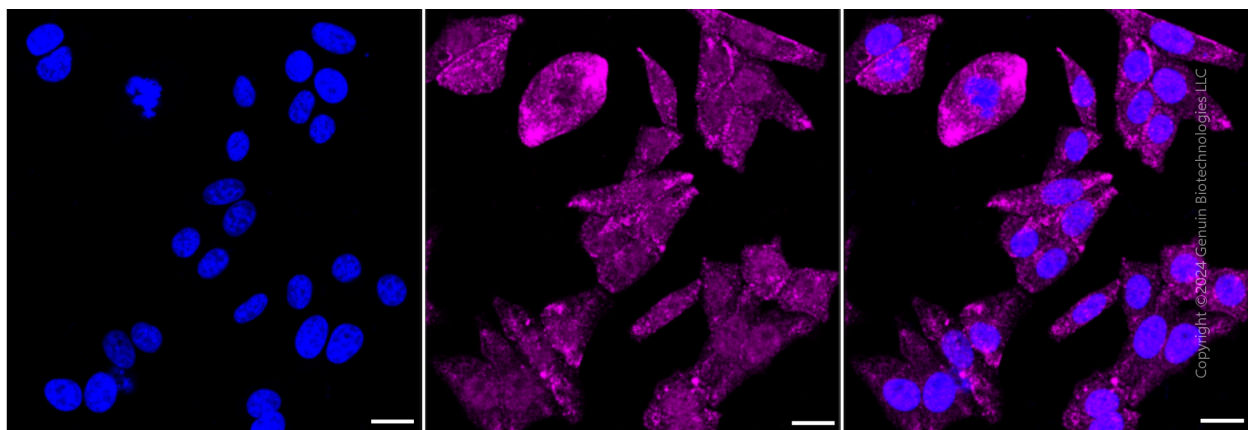
SALES@GENUINBIOTECH.COM
FAX: +1-540-855-7041

WWW.GENUINBIOTECH.COM



Copyright ©2024 Genuin Biotechnologies LLC

Flow cytometric analysis of Wnt family member 5B expression in HepG2 cells using anti-Wnt family member 5B antibody (Cat#2744, 1:2,000). Green, isotype control; red, Wnt family member 5B.



Copyright ©2024 Genuin Biotechnologies LLC

Immunocytochemical staining of HepG2 cells with anti-Wnt family member 5B antibody (Cat#2744, 1:1,000). Nuclei were stained blue with DAPI; Wnt family member 5B was stained magenta with Alexa Fluor® 647. Images were taken using Leica stellaris 5. Protein abundance based on laser Intensity and smart gain: High. Scale bar: 20 μ m.

SUPPORT

SUPPORT@GENUINBIOTECH.COM
TEL: +1-540-855-7041

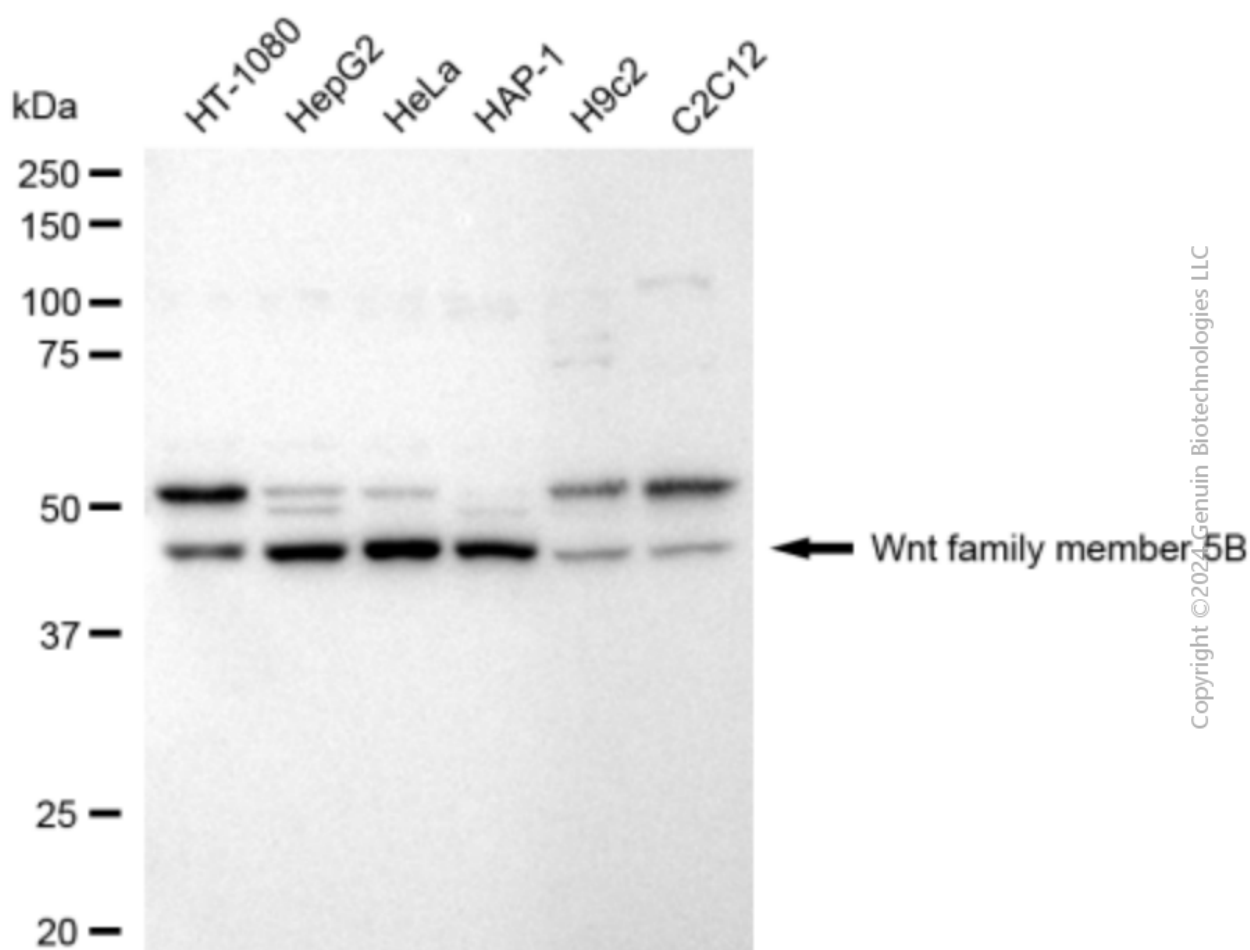
ORDERS

SALES@GENUINBIOTECH.COM
FAX: +1-540-855-7041

WWW.GENUINBIOTECH.COM

Anti-Wnt Family Member 5B Recombinant Rabbit Monoclonal Antibody

PAGE 3



Western blotting analysis using anti-Wnt family member 5B antibody (Cat#2744). Total cell lysates (30 µg) from various cell lines were loaded and separated by SDS-PAGE. The blot was incubated with anti-Wnt family member 5B antibody (Cat#2744, 1:5,000) and HRP-conjugated goat anti-rabbit secondary antibody (Cat#201, 1:20,000) respectively. Image was developed using FeQ™ ECL Substrate Kit (Cat#226).

SUPPORT

SUPPORT@GENUINBIOTECH.COM
TEL: +1-540-855-7041

ORDERS

SALES@GENUINBIOTECH.COM
FAX: +1-540-855-7041

WWW.GENUINBIOTECH.COM