

Anti-SMARCB1 Recombinant Rabbit Monoclonal Antibody



Catalog #: 2757

Aliases

SMARCB1; SWI/SNF Related, Matrix Associated, Actin Dependent Regulator Of Chromatin, Subfamily B, Member 1; BAF47; PPP1R144; SNF5L1; INI-1; HSNFS; Sfh1p; Ini1; Snr1; SNF5; RDT; SWI/SNF-Related Matrix-Associated Actin-Dependent Regulator Of Chromatin Subfamily B Member 1; Protein Phosphatase 1, Regulatory Subunit 144; Sucrose Nonfermenting, Yeast, Homolog-Like 1; Malignant Rhabdoid Tumor Suppressor; Integrase Interactor 1 Protein; BRG1-Associated Factor 47; SNF5 Homolog; HSNF5; SWI/SNF-Related Matrix-Associated Protein; Integrase Interactor 1; SWNTS1; MRD15; RTPS1; CSS3; INI1

Background

Gene Name: SMARCB1

NCBI Gene Entry: [6598](#)

UniProt Entry: [Q12824](#)

Application Information

Molecular Weight: Predicted, 44 kDa; observed, 44 kDa

Clonality: Rabbit monoclonal antibody

Clone ID: 24GB1935

Species Reactivity: Human, mouse, rat

Applications Tested: Western blotting (WB), flow cytometry (FCM), immunocytochemistry (IC)

Immunogen

A synthesized peptide derived from human SNF5

Isotype

Rabbit IgG

Storage Buffer

Supplied in PBS (pH 7.4) containing 50% glycerol, and 0.02% sodium azide.

Storage

Store at -20 °C for one year.

Recommended Dilutions

Western Blotting (WB): 1:1,000-1:5,000

Flow Cytometry (FCM): 1:2,000

SUPPORT

SUPPORT@GENUINBIOTECH.COM
TEL: +1-540-855-7041

ORDERS

SALES@GENUINBIOTECH.COM
FAX: +1-540-855-7041

WWW.GENUINBIOTECH.COM

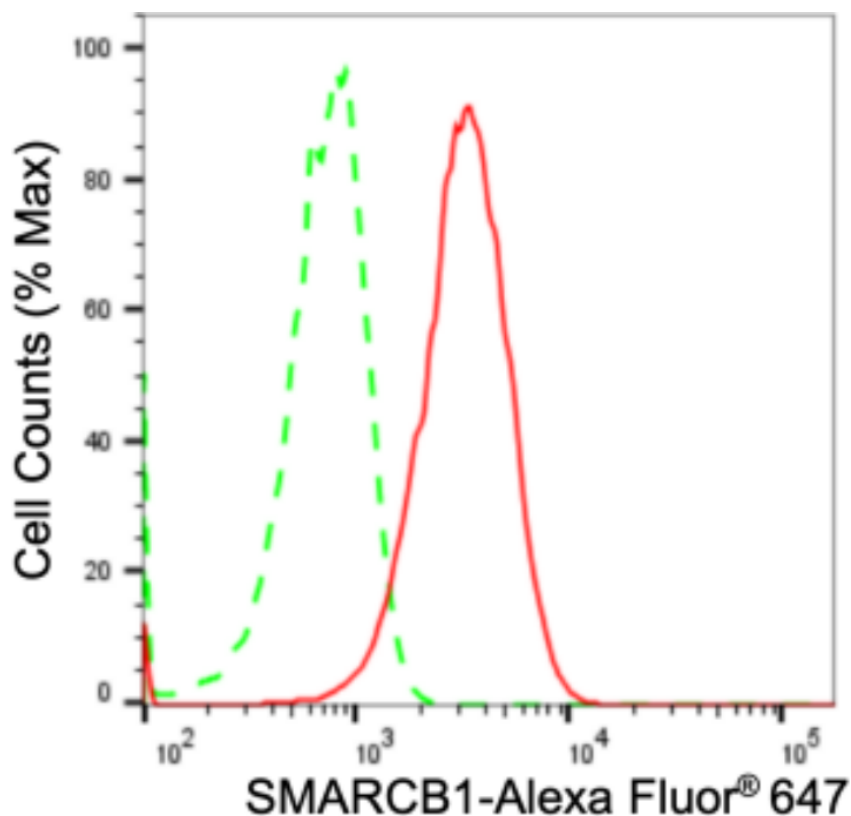
Anti-SMARCB1 Recombinant Rabbit Monoclonal Antibody

PAGE 2

Immunocytochemistry (IC): 1:100-1:1,000

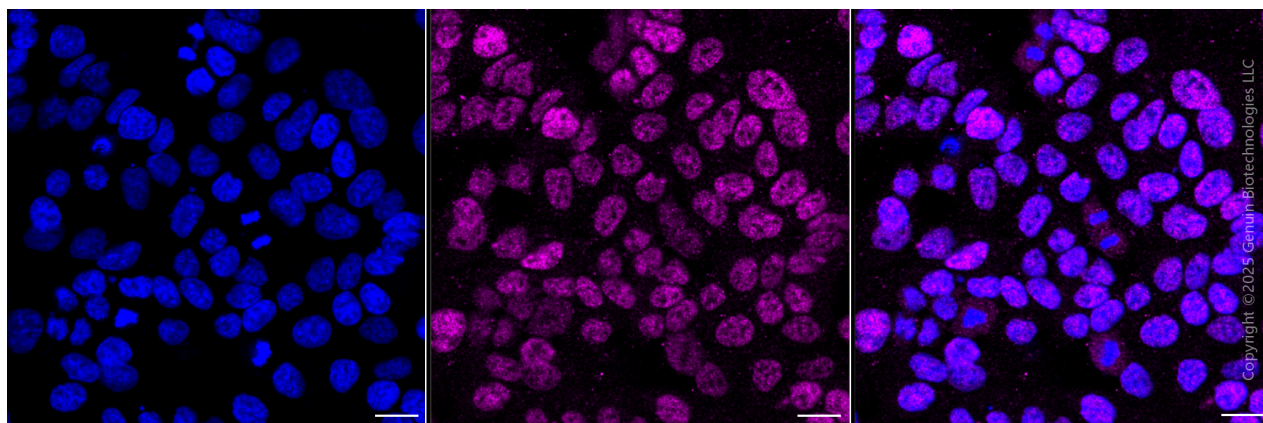
Note: This product is for research use only.

Validation Data



Copyright ©2024 Genuin Biotechnologies LLC

Flow cytometric analysis of SMARCB1 expression in HAP-1 cells using anti-SMARCB1 antibody (Cat#2757, 1:2,000). Green, isotype control; red, SMARCB1.



Copyright ©2025 Genuin Biotechnologies LLC

SUPPORT

SUPPORT@GENUINBIOTECH.COM
TEL: +1-540-855-7041

ORDERS

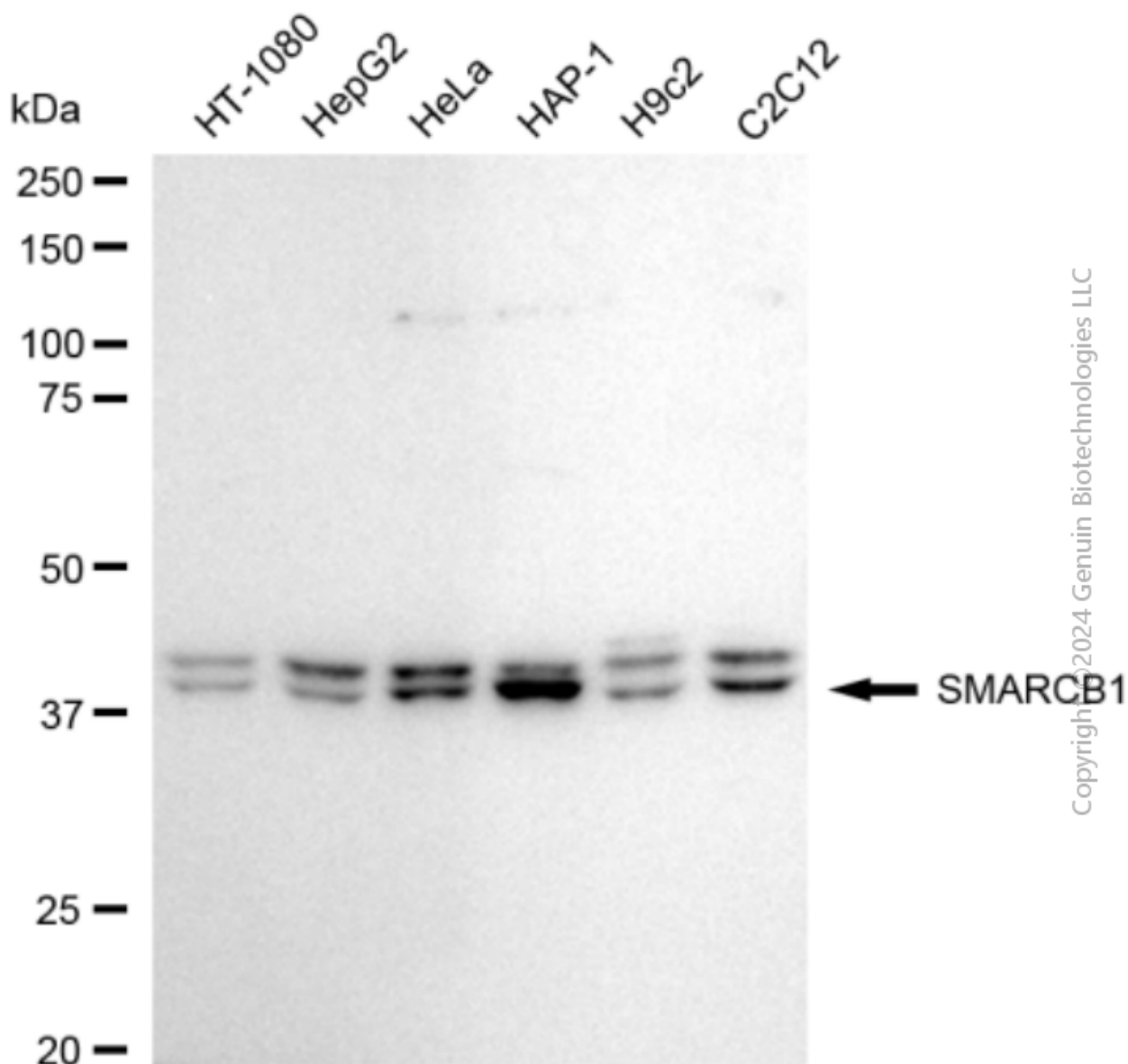
SALES@GENUINBIOTECH.COM
FAX: +1-540-855-7041

WWW.GENUINBIOTECH.COM

Anti-SMARCB1 Recombinant Rabbit Monoclonal Antibody

PAGE 3

and Smart Gain[®] Medium. Scale bar, 20 μ m.



Western blotting analysis using anti-SMARCB1 antibody (Cat#2757). Total cell lysates (30 μ g) from various cell lines were loaded and separated by SDS-PAGE. The blot was incubated with anti-SMARCB1 antibody (Cat#2757, 1:5,000) and HRP-conjugated goat anti-rabbit secondary antibody (Cat#201, 1:20,000) respectively. Image was developed using FeQ[™] ECL Substrate Kit (Cat#226).

SUPPORT

SUPPORT@GENUINBIOTECH.COM
TEL: +1-540-855-7041

ORDERS

SALES@GENUINBIOTECH.COM
FAX: +1-540-855-7041

WWW.GENUINBIOTECH.COM