

Anti-Torsin Family 1 Member A Recombinant Rabbit Monoclonal Antibody



Catalog #: 2758

Aliases

TOR1A; Torsin Family 1 Member A; DQ2; Torsin-1A; DYT1; Dystonia 1, Torsion (Autosomal Dominant; Torsin A); Dystonia 1 Protein; Torsin ATPase-1A; Torsin A; Torsin Family 1, Member A (Torsin A); Torsin ATPase 1; EC 3.6.4.-; TorsinA; AMC5; TORA; TA

Background

Gene Name: TOR1A

NCBI Gene Entry: [1861](#)

UniProt Entry: [O14656](#)

Application Information

Molecular Weight: Predicted, 38 kDa; observed, 35 kDa

Clonality: Rabbit monoclonal antibody

Clone ID: 24GB1955

Species Reactivity: Human, mouse, rat

Applications Tested: Western blotting (WB), flow cytometry (FCM), immunocytochemistry (IC)

Immunogen

A synthesized peptide derived from human Torsin A

Isotype

Rabbit IgG

Storage Buffer

Supplied in PBS (pH 7.4) containing 50% glycerol, and 0.02% sodium azide.

Storage

Store at -20 °C for one year.

Recommended Dilutions

Western Blotting (WB): 1:1,000-1:5,000

Flow Cytometry (FCM): 1:2,000

Immunocytochemistry (IC): 1:100-1:1,000

Note: This product is for research use only.

SUPPORT

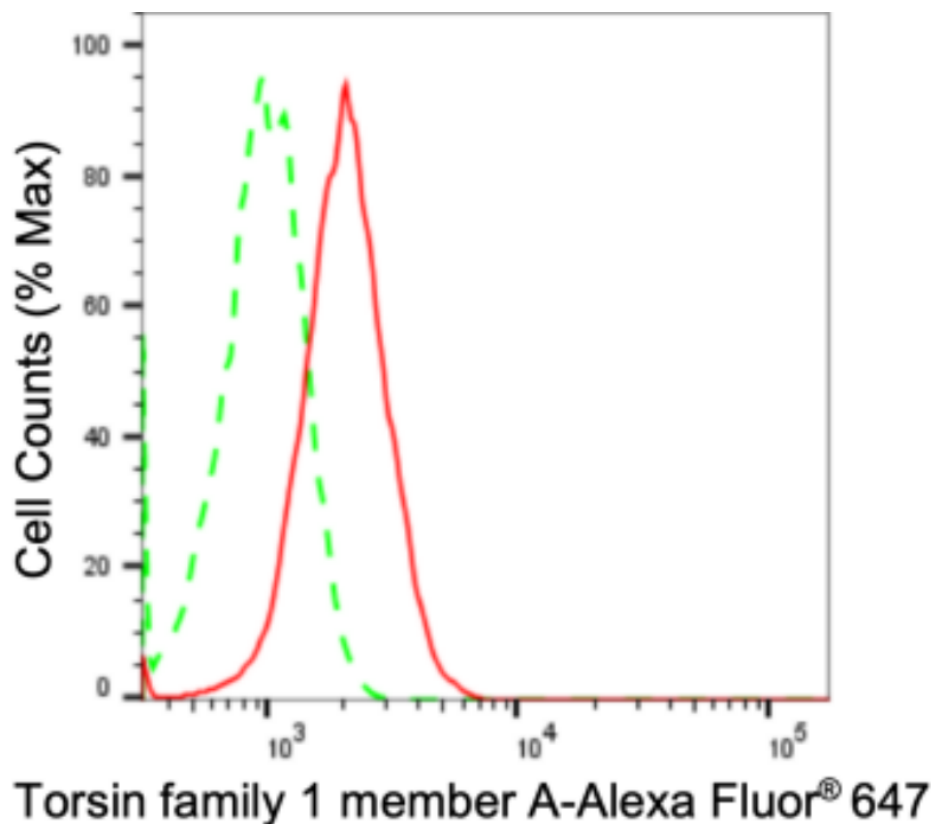
SUPPORT@GENUINBIOTECH.COM
TEL: +1-540-855-7041

ORDERS

SALES@GENUINBIOTECH.COM
FAX: +1-540-855-7041

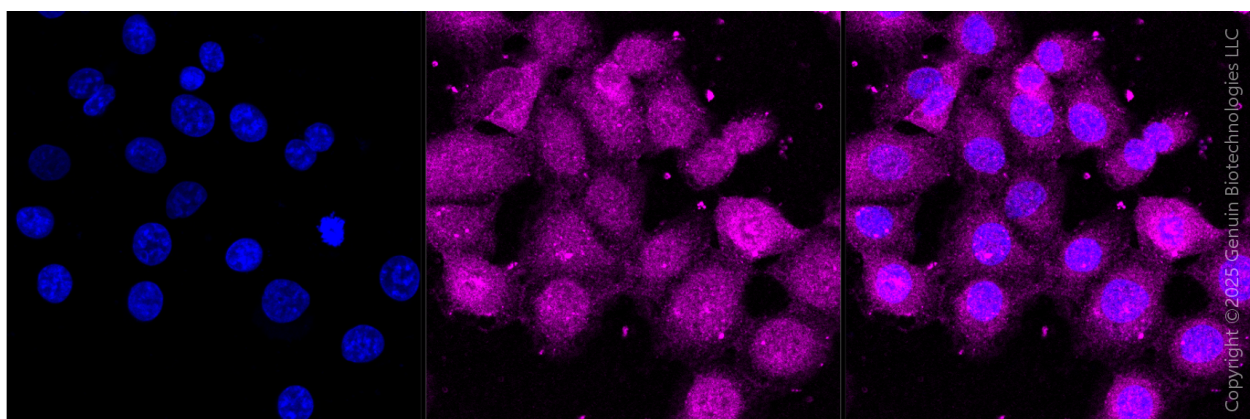
WWW.GENUINBIOTECH.COM

Validation Data



Copyright ©2024 Genuin Biotechnologies LLC

Flow cytometric analysis of Torsin family 1 member A expression in HT-1080 cells using anti-Torsin family 1 member A antibody (Cat#2758, 1:2,000). Green, isotype control; red, Torsin family 1 member A.



Immunocytochemical staining of HT-1080 cells with anti-Torsin family 1 member A antibody (Cat#2758, 1:1,000). Nuclei were stained blue with DAPI; Torsin family 1 member A was stained magenta with Alexa Fluor® 647. Images were taken using Leica stellaris 5. Protein abundance based on laser Intensity and smart gain: Medium. Scale bar, 20 μ m.

SUPPORT

SUPPORT@GENUINBIOTECH.COM
TEL: +1-540-855-7041

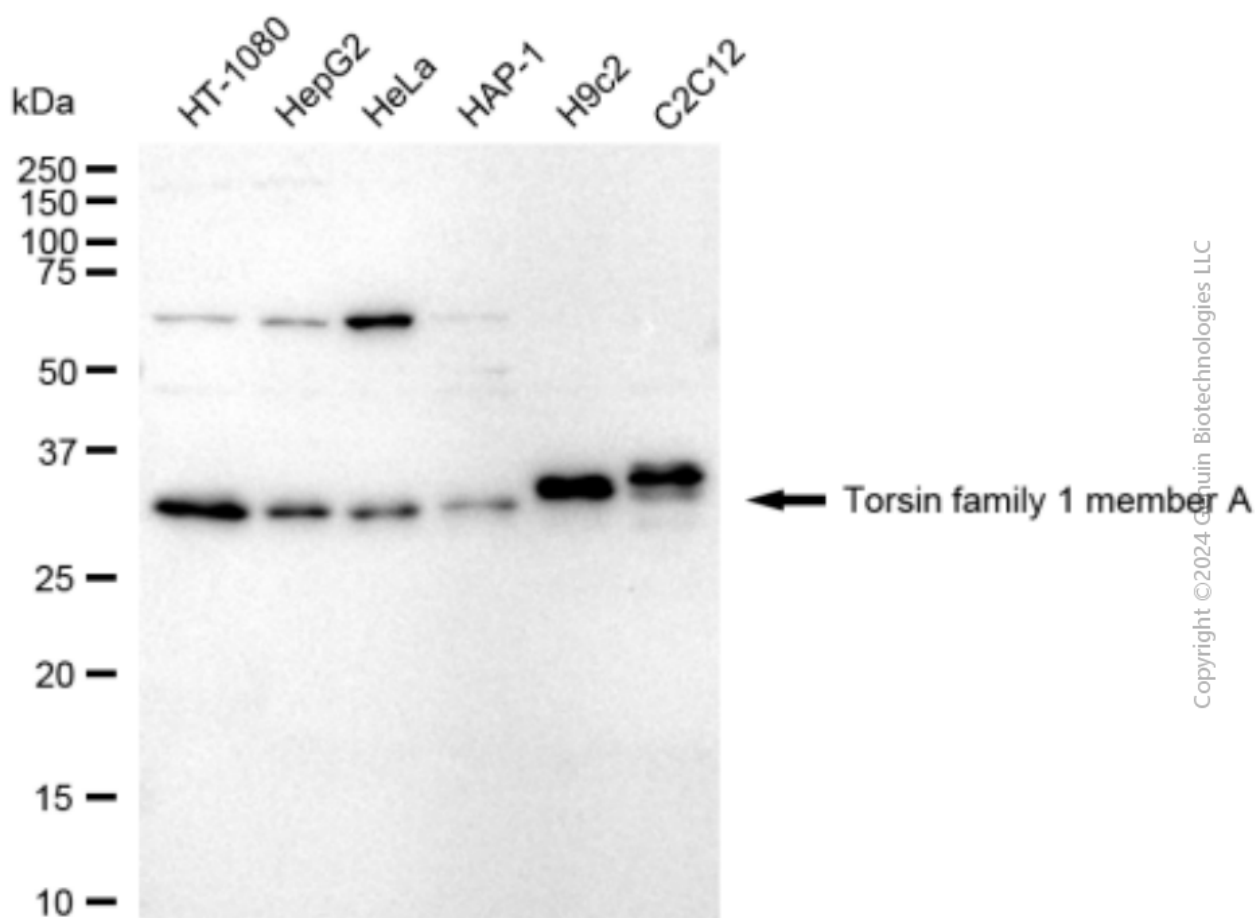
ORDERS

SALES@GENUINBIOTECH.COM
FAX: +1-540-855-7041

WWW.GENUINBIOTECH.COM

Anti-Torsin Family 1 Member A Recombinant Rabbit Monoclonal Antibody

PAGE 3



Western blotting analysis using anti-torsin family 1 member A antibody (Cat#2758). Total cell lysates (30 µg) from various cell lines were loaded and separated by SDS-PAGE. The blot was incubated with anti-torsin family 1 member A antibody (Cat#2758, 1:5,000) and HRP-conjugated goat anti-rabbit secondary antibody (Cat#201, 1:20,000) respectively. Image was developed using FeQ™ ECL Substrate Kit (Cat#226).

SUPPORT

SUPPORT@GENUINBIOTECH.COM
TEL: +1-540-855-7041

ORDERS

SALES@GENUINBIOTECH.COM
FAX: +1-540-855-7041

WWW.GENUINBIOTECH.COM