

# Anti-TUBA1B/TUBA4A Recombinant Rabbit Monoclonal Antibody



**Catalog #: 2761**

## Aliases

TUBA1B; Tubulin Alpha 1b; K-ALPHA-1; Tubulin Alpha-Ubiquitous Chain; Tubulin, Alpha, Ubiquitous; Alpha-Tubulin Ubiquitous; Tubulin Alpha-1B Chain; Tubulin K-Alpha-1; Alpha Tubulin; EC 3.6.5.-; TUBA4A; Tubulin Alpha 4a; H2-ALPHA; TUBA1; Tubulin, Alpha 1 (Testis Specific); Tubulin Alpha-4A Chain; Tubulin Alpha-1 Chain; Tubulin H2-Alpha; FLJ30169; Testis-Specific Alpha-Tubulin; Tubulin, Alpha 1; Alpha-Tubulin 1; EC 3.6.5.-; ALS22

## Background

Gene Name: TUBA1B/TUBA4A

NCBI Gene Entry: [10376/7277](#)

UniProt Entry: [P68363/P68366](#)

## Application Information

Molecular Weight: Predicted, 50 kDa; observed, 50 kDa

Clonality: Rabbit monoclonal antibody

Clone ID: 24GB2020

Species Reactivity: Human, mouse, rat

Applications Tested: Western blotting (WB), flow cytometry (FCM), immunocytochemistry (IC)

## Immunogen

A synthesized peptide derived from human TUBA1B/TUBA4A

## Isotype

Rabbit IgG

## Storage Buffer

Supplied in PBS (pH 7.4) containing 50% glycerol, and 0.02% sodium azide.

## Storage

Store at -20 °C for one year.

## Recommended Dilutions

Western Blotting (WB): 1:1,000-1:5,000

Flow Cytometry (FCM): 1:2,000

Immunocytochemistry (IC): 1:100-1:1,000

---

### SUPPORT

SUPPORT@GENUINBIOTECH.COM  
TEL: +1-540-855-7041

### ORDERS

SALES@GENUINBIOTECH.COM  
FAX: +1-540-855-7041

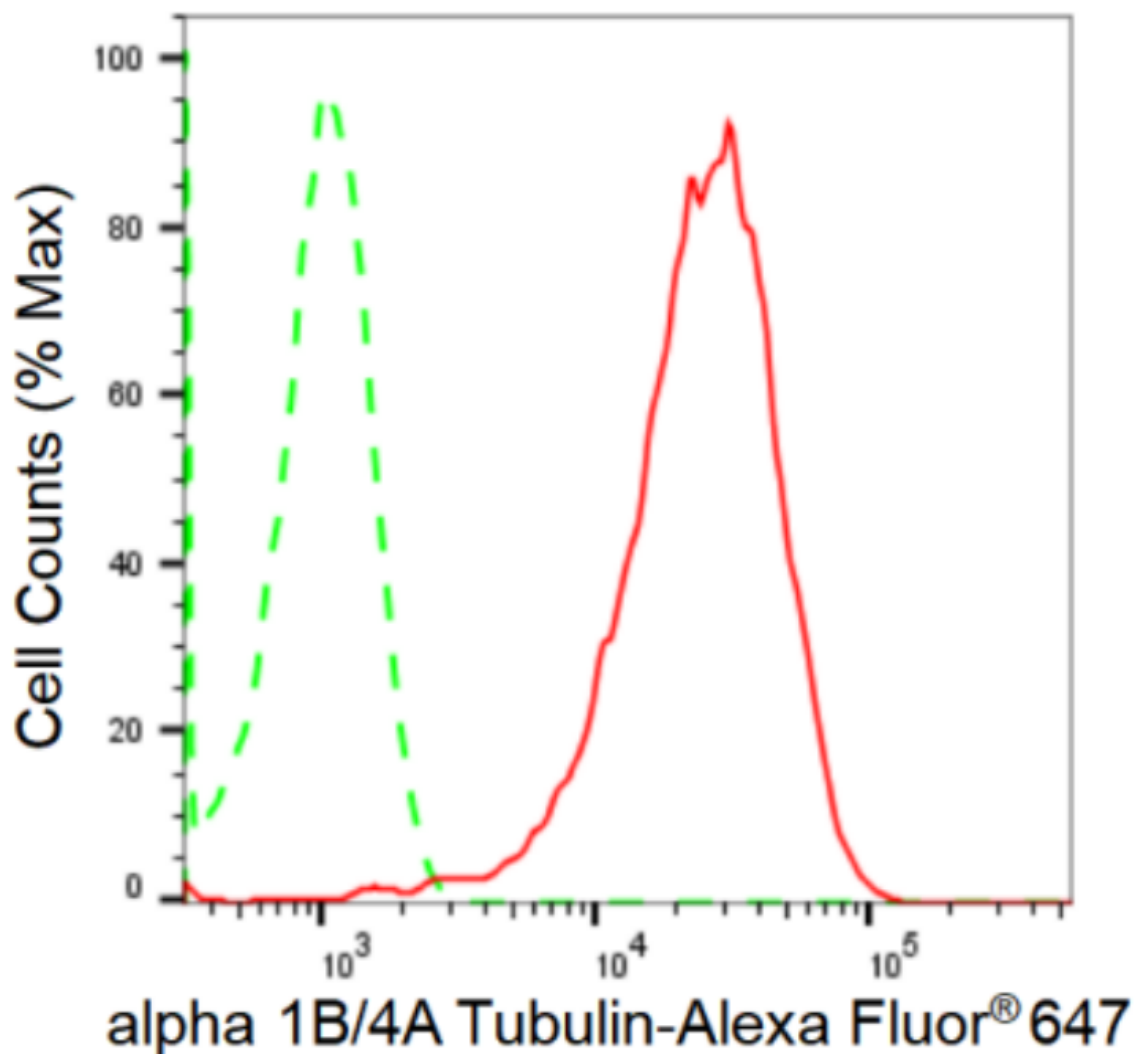
[WWW.GENUINBIOTECH.COM](http://WWW.GENUINBIOTECH.COM)

# Anti-TUBA1B/TUBA4A Recombinant Rabbit Monoclonal Antibody

PAGE 2

**Note:** This product is for research use only.

## Validation Data



Copyright ©2024 Genuin Biotechnologies LLC

Flow cytometric analysis of alpha 1B/4A Tubulin expression in HepG2 cells using anti-alpha 1B/4A Tubulin antibody (Cat#2761, 1:2,000). Green, isotype control; red, alpha 1B/4A Tubulin.

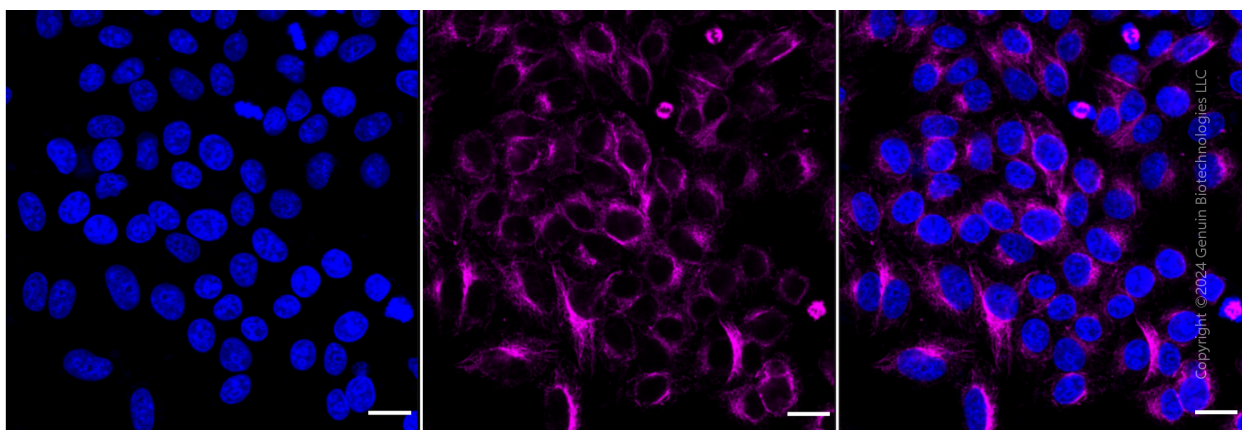
### SUPPORT

SUPPORT@GENUINBIOTECH.COM  
TEL: +1-540-855-7041

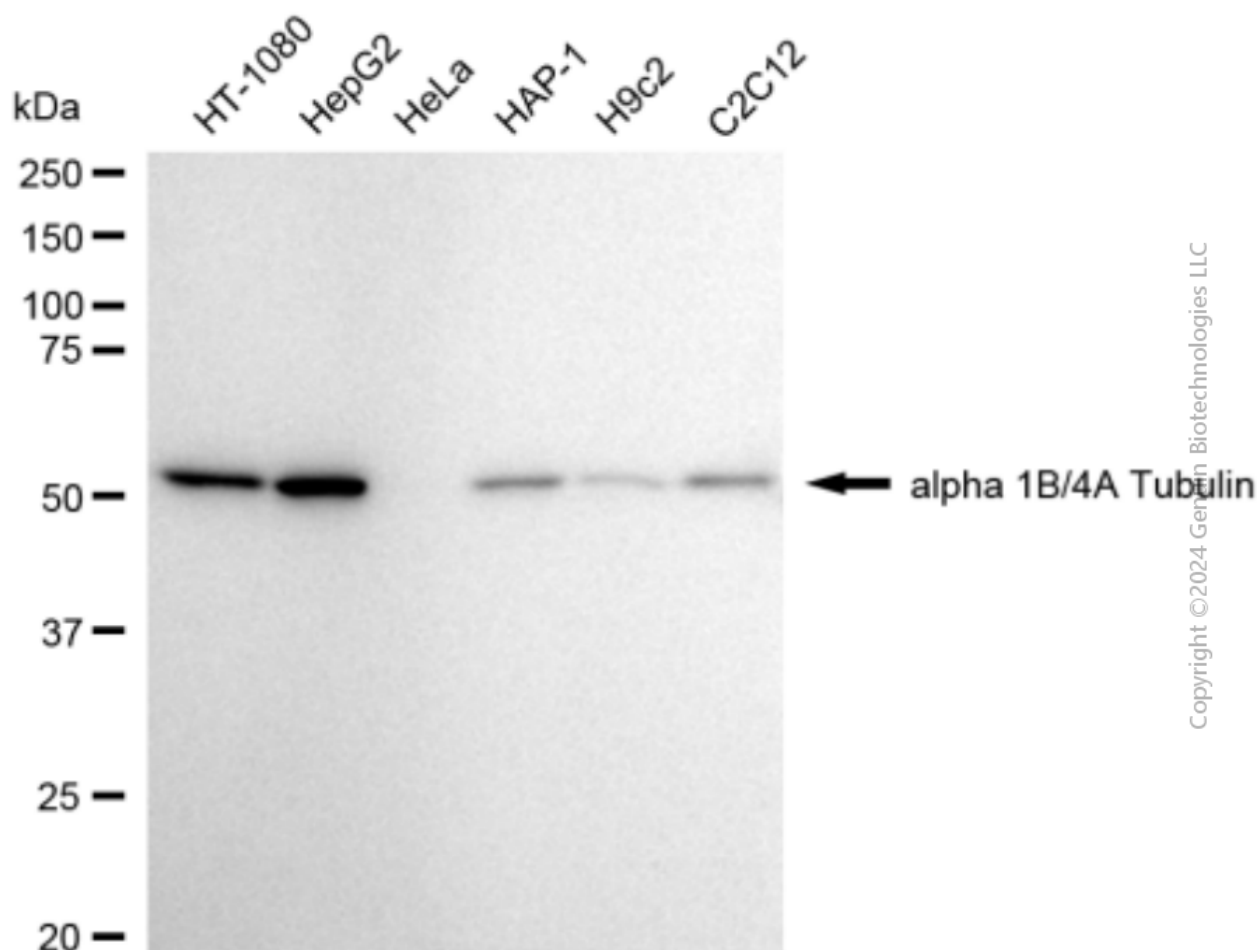
### ORDERS

SALES@GENUINBIOTECH.COM  
FAX: +1-540-855-7041

[WWW.GENUINBIOTECH.COM](http://WWW.GENUINBIOTECH.COM)



Immunocytochemical staining of HepG2 cells with anti-alpha 1B/4A Tubulin antibody (Cat#2761, 1:1,000). Nuclei were stained blue with DAPI; alpha 1B/4A Tubulin was stained magenta with Alexa Fluor® 647. Images were taken using Leica stellaris 5. Protein abundance based on laser Intensity and smart gain: High. Scale bar: 20  $\mu$ m.



Western blotting analysis using anti-alpha 1B/4A Tubulin antibody (Cat#2761). Total cell lysates (30  $\mu$ g) from various cell lines were loaded and separated by SDS-PAGE. The blot was incubated with anti-alpha 1B/4A Tubulin antibody (Cat#2761, 1:5,000) and HRP-conjugated goat anti-rabbit

## SUPPORT

SUPPORT@GENUINBIOTECH.COM  
TEL: +1-540-855-7041

## ORDERS

SALES@GENUINBIOTECH.COM  
FAX: +1-540-855-7041

[WWW.GENUINBIOTECH.COM](http://WWW.GENUINBIOTECH.COM)

## **Anti-TUBA1B/TUBA4A Recombinant Rabbit Monoclonal Antibody**

PAGE 4

secondary antibody (Cat#201, 1:20,000) respectively. Image was developed using FeQ™ ECL Substrate Kit (Cat#226).

---

### **SUPPORT**

SUPPORT@GENUINBIOTECH.COM  
TEL: +1-540-855-7041

### **ORDERS**

SALES@GENUINBIOTECH.COM  
FAX: +1-540-855-7041

**WWW.GENUINBIOTECH.COM**