

Anti-WASP Family Member 2 Recombinant Rabbit Monoclonal Antibody



Catalog #: 2763

Aliases

WASF2; WASP Family Member 2; WAVE2; SCAR2; Wiskott-Aldrich Syndrome Protein Family Member 2; Verprolin Homology Domain-Containing Protein 2; WASP Family Protein Member 2; WAS Protein Family Member 2; Actin-Binding Protein WASF2; Protein WAVE-2; Putative Wiskott-Aldrich Syndrome Protein Family Member 4; Suppressor Of Cyclic-AMP Receptor (WASP-Family); WASP Family Verprolin-Homologous Protein 2; WAS Protein Family, Member 2; WASP Family Protein Member 4; DJ393P12.2; WASF4; IMD2

Background

Gene Name: WASF2

NCBI Gene Entry: [10163](#)

UniProt Entry: [Q9Y6W5](#)

Application Information

Molecular Weight: Predicted, 54 kDa; observed, 80 kDa

Clonality: Rabbit monoclonal antibody

Clone ID: 24GB2055

Species Reactivity: Human

Applications Tested: Western blotting (WB), flow cytometry (FCM), immunocytochemistry (IC)

Immunogen

A synthesized peptide derived from human WASF2

Isotype

Rabbit IgG

Storage Buffer

Supplied in PBS (pH 7.4) containing 50% glycerol, and 0.02% sodium azide.

Storage

Store at -20 °C for one year.

Recommended Dilutions

Western Blotting (WB): 1:1,000-1:5,000

Flow Cytometry (FCM): 1:2,000

Immunocytochemistry (IC): 1:100-1:1,000

SUPPORT

SUPPORT@GENUINBIOTECH.COM
TEL: +1-540-855-7041

ORDERS

SALES@GENUINBIOTECH.COM
FAX: +1-540-855-7041

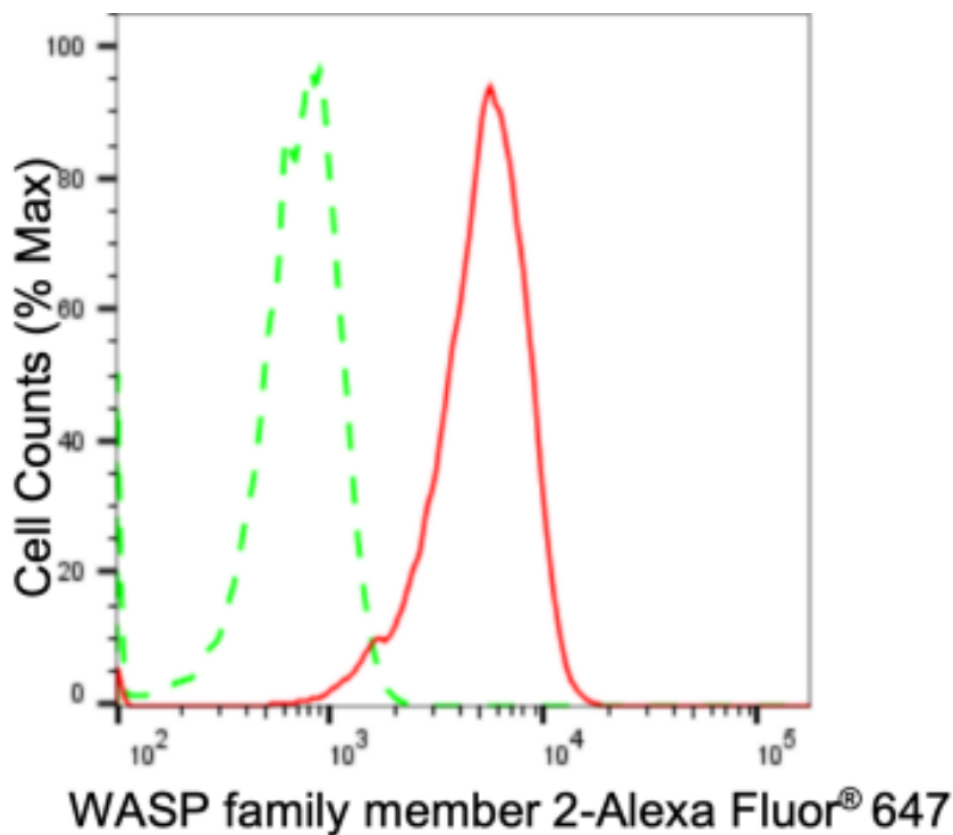
WWW.GENUINBIOTECH.COM

Anti-WASP Family Member 2 Recombinant Rabbit Monoclonal Antibody

PAGE 2

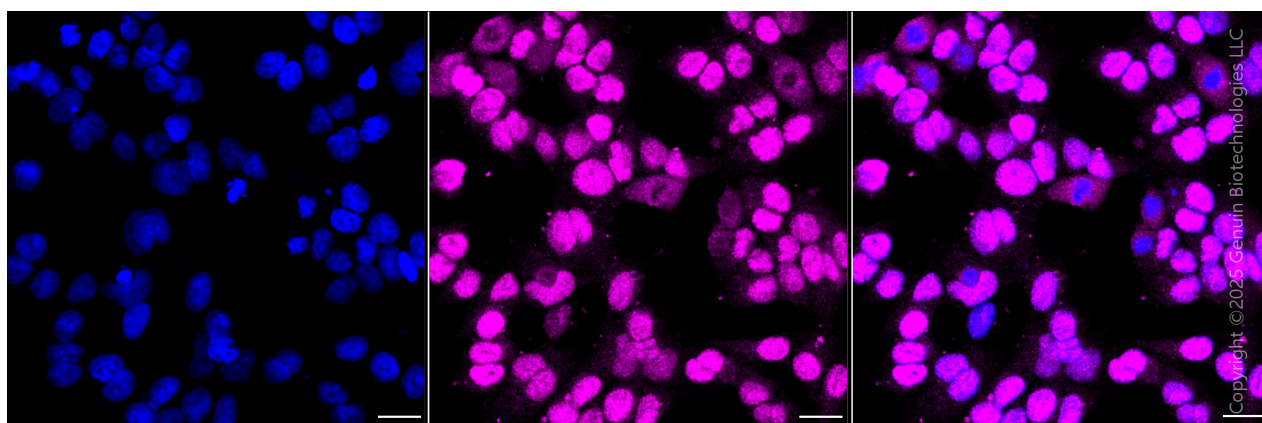
Note: This product is for research use only.

Validation Data



Copyright ©2024 Genuin Biotechnologies LLC

Flow cytometric analysis of WASP family member 2 expression in HAP-1 cells using anti-WASP family member 2 antibody (Cat#2763, 1:2,000). Green, isotype control; red, WASP family member 2.



Immunocytochemical staining of HAP1 cells with anti-WASP family member 2 antibody (Cat#2763, 1:1,000). Nuclei were stained blue with DAPI; WASP family member 2 was stained magenta with Alexa Fluor® 647. Images were taken using Leica stellaris 5. Protein abundance

SUPPORT

SUPPORT@GENUINBIOTECH.COM
TEL: +1-540-855-7041

ORDERS

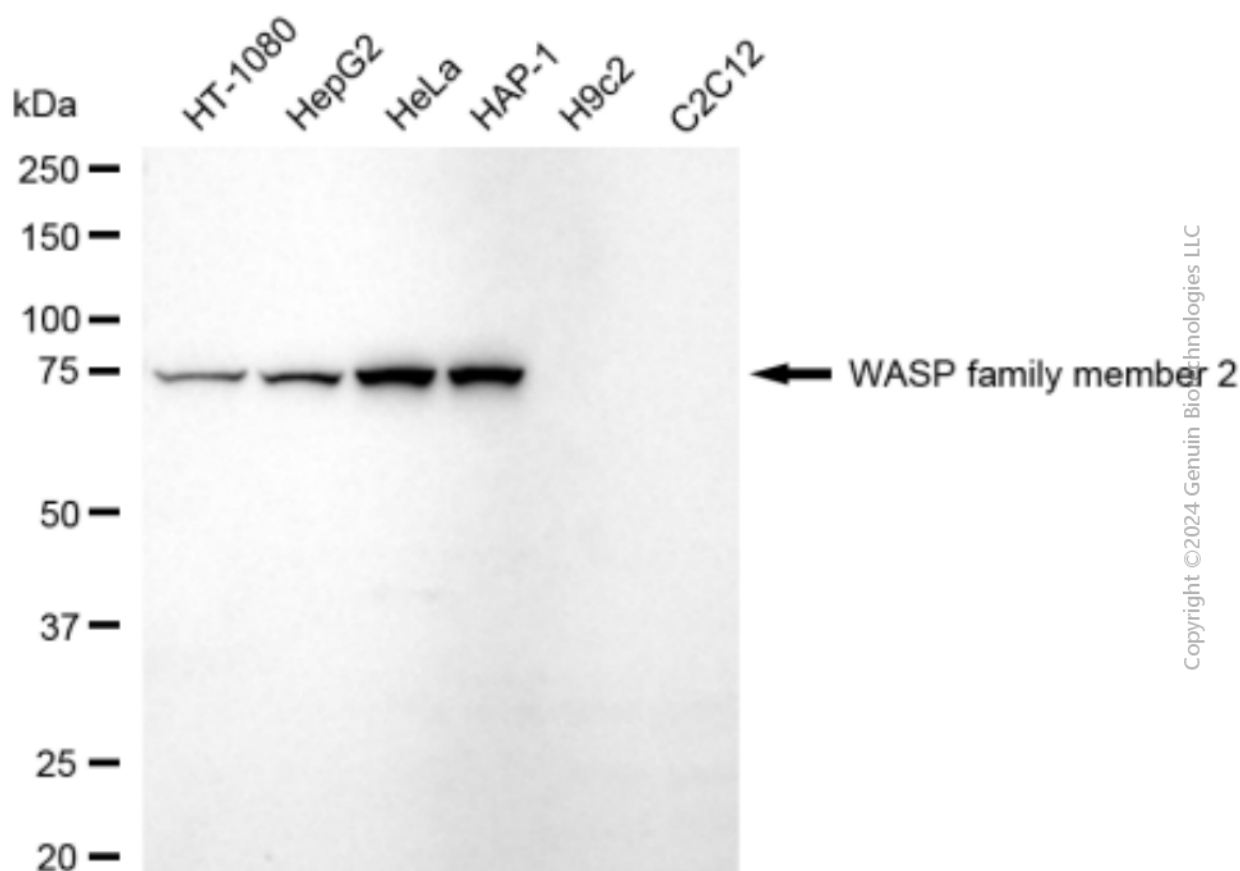
SALES@GENUINBIOTECH.COM
FAX: +1-540-855-7041

WWW.GENUINBIOTECH.COM

Anti-WASP Family Member 2 Recombinant Rabbit Monoclonal Antibody

PAGE 3

based on laser Intensity and smart gain: Medium. Scale bar, 20 μ m.



Western blotting analysis using anti-WASP family member 2 antibody (Cat#2763). Total cell lysates (30 μ g) from various cell lines were loaded and separated by SDS-PAGE. The blot was incubated with anti-WASP family member 2 antibody (Cat#2763, 1:5,000) and HRP-conjugated goat anti-rabbit secondary antibody (Cat#201, 1:20,000) respectively. Image was developed using FeQ™ ECL Substrate Kit (Cat#226).

SUPPORT

SUPPORT@GENUINBIOTECH.COM
TEL: +1-540-855-7041

ORDERS

SALES@GENUINBIOTECH.COM
FAX: +1-540-855-7041

WWW.GENUINBIOTECH.COM