

Anti-SRY-Box Transcription Factor 1 Recombinant Rabbit Monoclonal Antibody



Catalog #: 2765

Aliases

SOX1; SRY-Box Transcription Factor 1; SRY (Sex Determining Region Y)-Box 1; SRY-Related HMG-Box Gene 1; Transcription Factor SOX-1; SRY-Box 1

Background

Gene Name: SOX1

NCBI Gene Entry: [6656](#)

UniProt Entry: [O00570](#)

Application Information

Molecular Weight: Predicted, 39 kDa; observed, 39 kDa

Clonality: Rabbit monoclonal antibody

Clone ID: 24GB2080

Species Reactivity: Human, mouse, rat

Applications Tested: Western blotting (WB), flow cytometry (FCM), immunocytochemistry (IC)

Immunogen

A synthesized peptide derived from human SOX1

Isotype

Rabbit IgG

Storage Buffer

Supplied in PBS (pH 7.4) containing 50% glycerol, and 0.02% sodium azide.

Storage

Store at -20 °C for one year.

Recommended Dilutions

Western Blotting (WB): 1:1,000-1:5,000

Flow Cytometry (FCM): 1:2,000

Immunocytochemistry (IC): 1:100-1:1,000

Note: This product is for research use only.

Validation Data

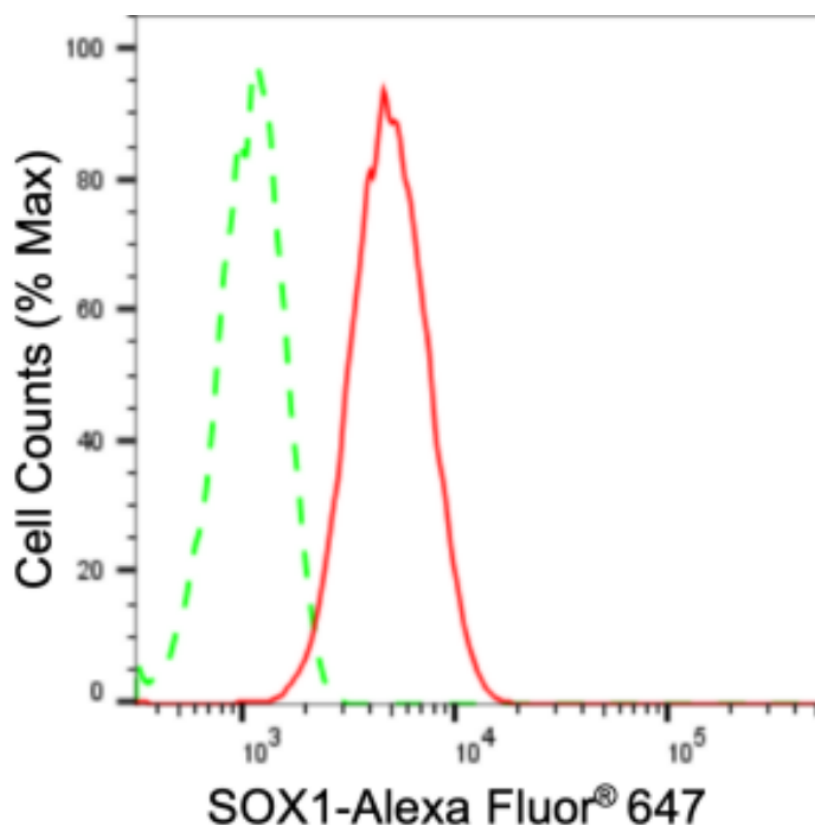
SUPPORT

SUPPORT@GENUINBIOTECH.COM
TEL: +1-540-855-7041

ORDERS

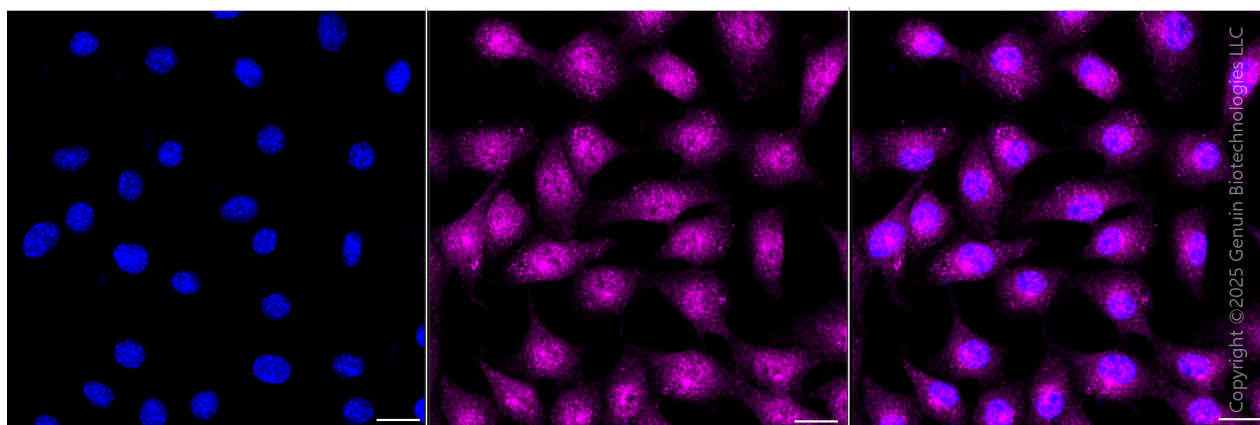
SALES@GENUINBIOTECH.COM
FAX: +1-540-855-7041

WWW.GENUINBIOTECH.COM



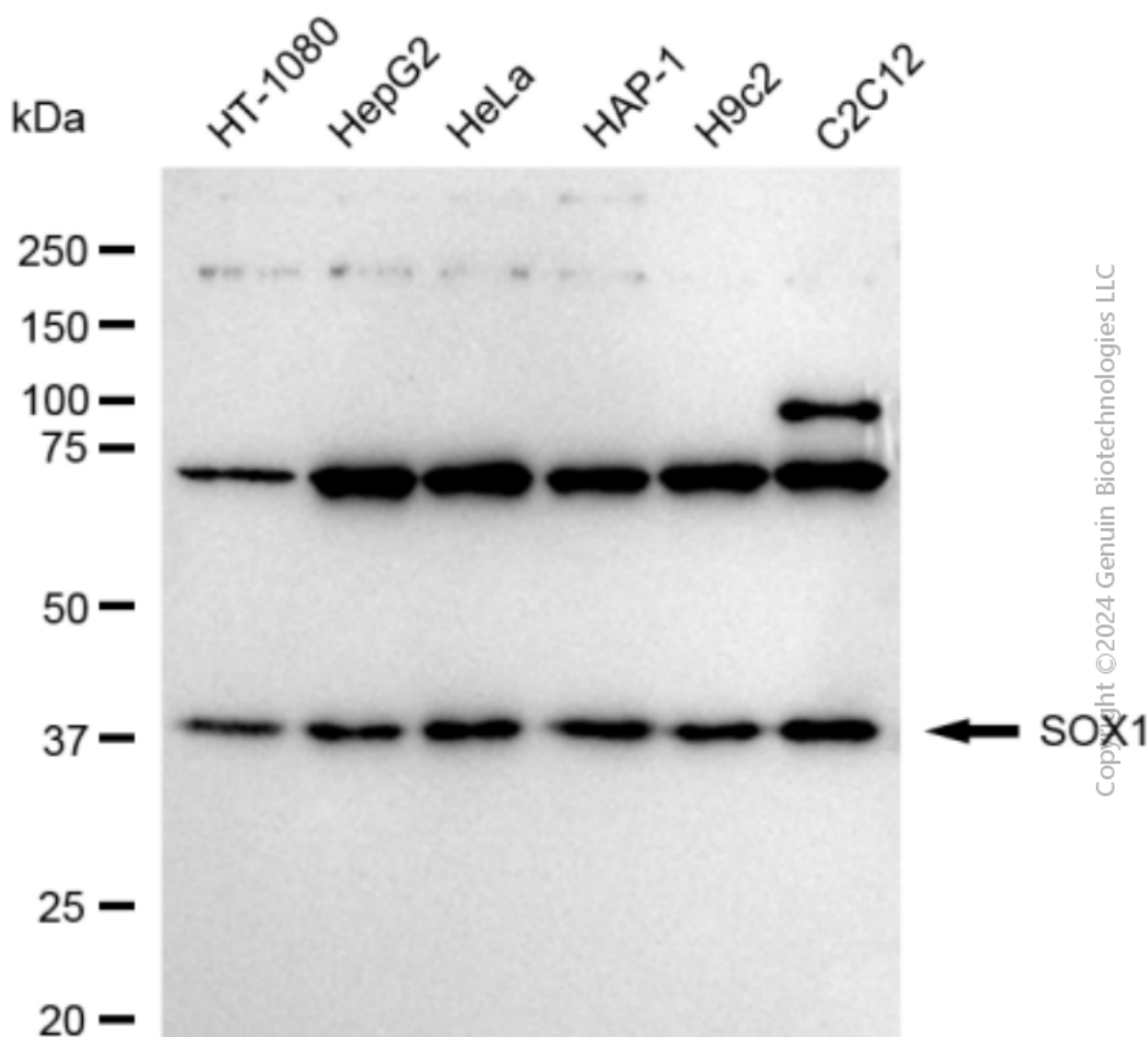
Copyright ©2024 Genuin Biotechnologies LLC

Flow cytometric analysis of SOX1 expression in C2C12 cells using anti-SOX1 antibody (Cat#2765, 1:2,000). Green, isotype control; red, SOX1.



Copyright ©2025 Genuin Biotechnologies LLC

Immunocytochemical staining of C2C12 cells with anti-SOX1 antibody (Cat#2765, 1:1,000). Nuclei were stained blue with DAPI; SOX1 was stained magenta with Alexa Fluor® 647. Images were taken using Leica stellaris 5. Protein abundance based on laser Intensity and Smart Gain: Medium. Scale bar, 20 μ m.



Western blotting analysis using anti-SOX1 antibody (Cat#2765). Total cell lysates (30 µg) from various cell lines were loaded and separated by SDS-PAGE. The blot was incubated with anti-SOX1 antibody (Cat#2765, 1:5,000) and HRP-conjugated goat anti-rabbit secondary antibody (Cat#201, 1:20,000) respectively. Image was developed using FeQ™ ECL Substrate Kit (Cat#226).