

# Anti-Solute Carrier Family 6 Member 3 Recombinant Rabbit Monoclonal Antibody



**Catalog #: 2770**

## Aliases

SLC6A3; Solute Carrier Family 6 Member 3; DAT; Sodium-Dependent Dopamine Transporter; DAT1; Solute Carrier Family 6 (Neurotransmitter Transporter, Dopamine), Member 3; Solute Carrier Family 6 (Neurotransmitter Transporter), Member 3; Dopamine Transporter 1; DA Transporter; Dopamine Transporter; PKDYS1; PKDYS

## Background

Gene Name: SLC6A3  
NCBI Gene Entry: [6531](#)  
UniProt Entry: [Q01959](#)

## Application Information

Molecular Weight: Predicted, 68 kDa; observed, 40 kDa  
Clonality: Rabbit monoclonal antibody  
Clone ID: 24GB2160  
Species Reactivity: Human  
Applications Tested: Western blotting (WB), flow cytometry (FCM), immunocytochemistry (IC)

## Immunogen

A synthesized peptide derived from human Dopamine Transporter

## Isotype

Rabbit IgG

## Storage Buffer

Supplied in PBS (pH 7.4) containing 50% glycerol, and 0.02% sodium azide.

## Storage

Store at -20 °C for one year.

## Recommended Dilutions

Western Blotting (WB): 1:1,000-1:5,000  
Flow Cytometry (FCM): 1:2,000  
Immunocytochemistry (IC): 1:100-1:1,000

---

### SUPPORT

SUPPORT@GENUINBIOTECH.COM  
TEL: +1-540-855-7041

### ORDERS

SALES@GENUINBIOTECH.COM  
FAX: +1-540-855-7041

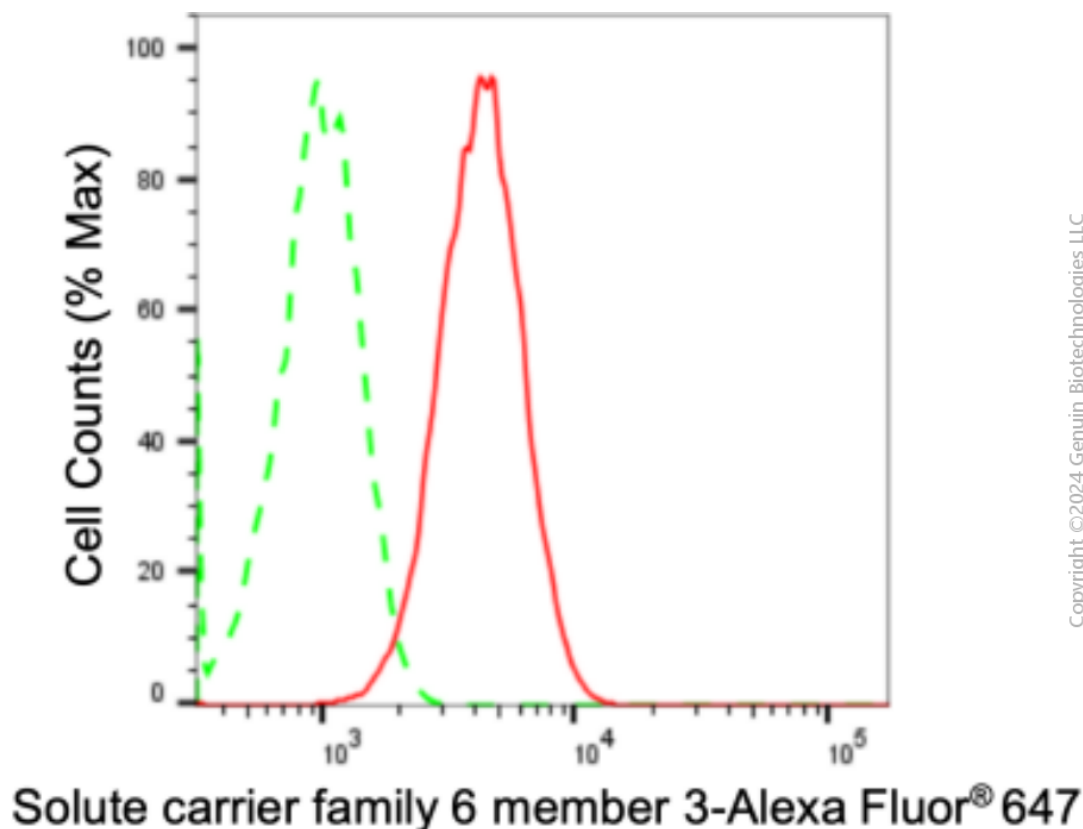
[WWW.GENUINBIOTECH.COM](http://WWW.GENUINBIOTECH.COM)

# Anti-Solute Carrier Family 6 Member 3 Recombinant Rabbit Monoclonal Antibody

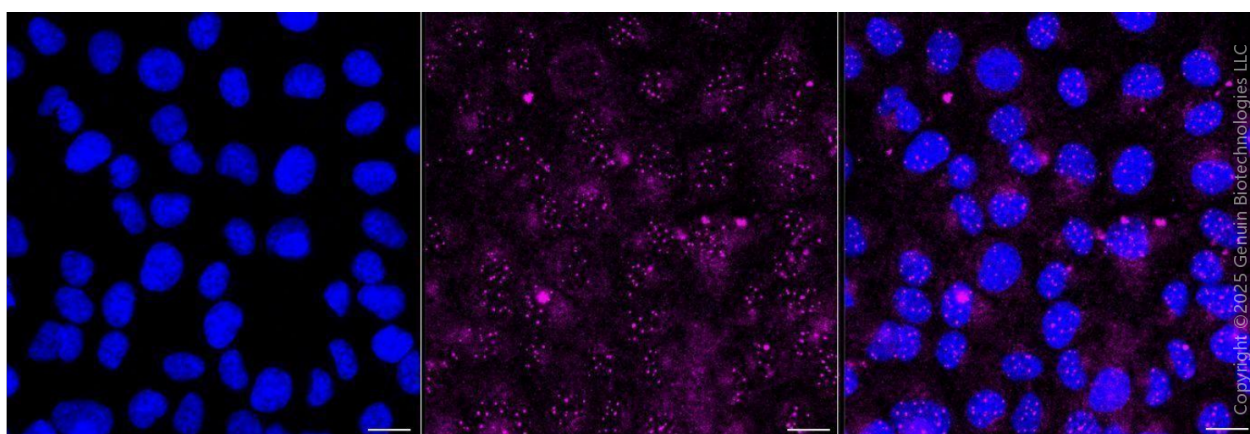
PAGE 2

**Note:** This product is for research use only.

## Validation Data



Flow cytometric analysis of Solute carrier family 6 member 3 expression in HT-1080 cells using anti-Solute carrier family 6 member 3 antibody (Cat#2770, 1:2,000). Green, isotype control; red, Solute carrier family 6 member 3.



Immunocytochemical staining of HT-1080 cells with anti-Solute carrier family 6 member 3 antibody (Cat#2770, 1:1,000). Nuclei were stained blue with DAPI; Solute carrier family 6 member 3 was stained magenta with Alexa Fluor® 647. Images were taken using Leica stellaris 5.

### SUPPORT

SUPPORT@GENUINBIOTECH.COM  
TEL: +1-540-855-7041

### ORDERS

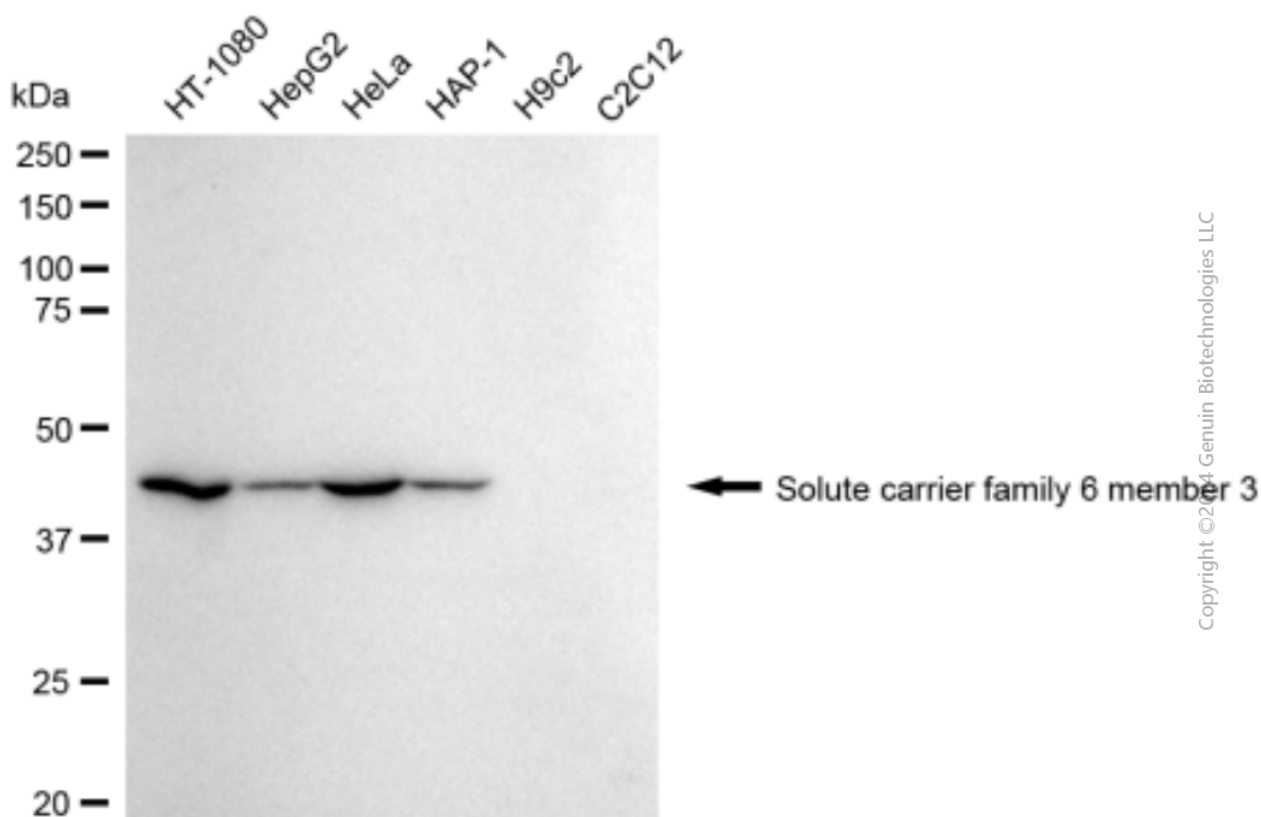
SALES@GENUINBIOTECH.COM  
FAX: +1-540-855-7041

[WWW.GENUINBIOTECH.COM](http://WWW.GENUINBIOTECH.COM)

## Anti-Solute Carrier Family 6 Member 3 Recombinant Rabbit Monoclonal Antibody

PAGE 3

Protein abundance based on laser Intensity and smart gain: Medium. Scale bar, 20  $\mu$ m.



Western blotting analysis using anti-solute carrier family 6 member 3 antibody (Cat#2770). Total cell lysates (30  $\mu$ g) from various cell lines were loaded and separated by SDS-PAGE. The blot was incubated with anti-solute carrier family 6 member 3 antibody (Cat#2770, 1:5,000) and HRP-conjugated goat anti-rabbit secondary antibody (Cat#201, 1:20,000) respectively. Image was developed using FeQ™ ECL Substrate Kit (Cat#226).

### SUPPORT

SUPPORT@GENUINBIOTECH.COM  
TEL: +1-540-855-7041

### ORDERS

SALES@GENUINBIOTECH.COM  
FAX: +1-540-855-7041

WWW.GENUINBIOTECH.COM