

Anti-ETS1 Recombinant Rabbit Monoclonal Antibody



Catalog #: 2771

Aliases

ETS Proto-Oncogene 1, Transcription Factor; ETS-1; EWSR2; Avian Erythroblastosis Virus E26 (V-Ets) Oncogene Homolog-1; V-Ets Avian Erythroblastosis Virus E26 Oncogene Homolog 1; Protein C-Ets-1; FLJ10768; P54; V-Ets Avian Erythroblastosis Virus E2 Oncogene Homolog 1; Ets Protein; C-Ets-1

Background

Gene Name: ETS1

NCBI Gene Entry: [2113](#)

UniProt Entry: [P14921](#)

Application Information

Molecular Weight: Predicted, 50 kDa; observed, 46 kDa

Clonality: Rabbit monoclonal antibody

Clone ID: 23GB1160

Species Reactivity: Human

Applications Tested: Western blotting (WB), flow cytometry (FCM), immunocytochemistry (IC)

Immunogen

A synthesized peptide derived from human ETS1

Isotype

Rabbit IgG

Storage Buffer

Supplied in PBS (pH 7.4) containing 50% glycerol, and 0.02% sodium azide.

Storage

Store at -20 °C for one year.

Recommended Dilutions

Western Blotting (WB): 1:1,000-1:5,000

Flow Cytometry (FCM): 1:2,000

Immunocytochemistry (IC): 1:100-1:1,000

SUPPORT

SUPPORT@GENUINBIOTECH.COM
TEL: +1-540-855-7041

ORDERS

SALES@GENUINBIOTECH.COM
FAX: +1-540-855-7041

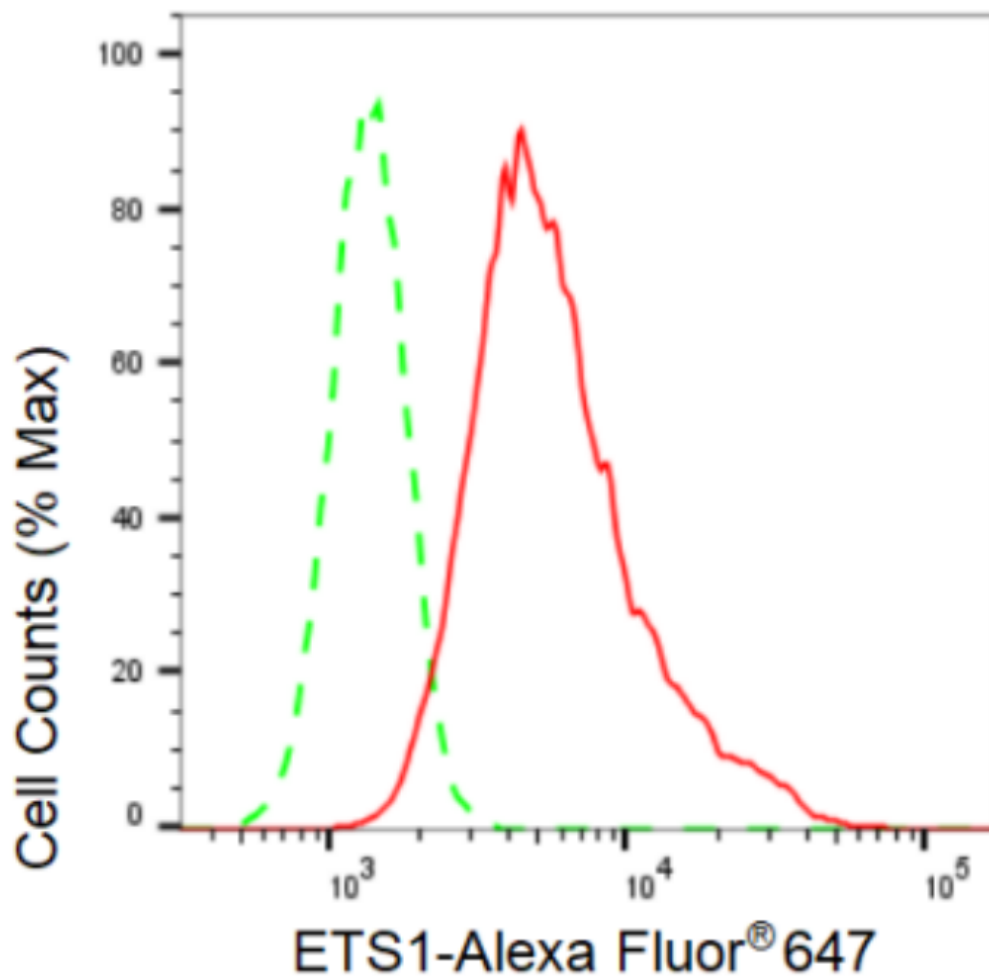
WWW.GENUINBIOTECH.COM

Anti-ETS1 Recombinant Rabbit Monoclonal Antibody

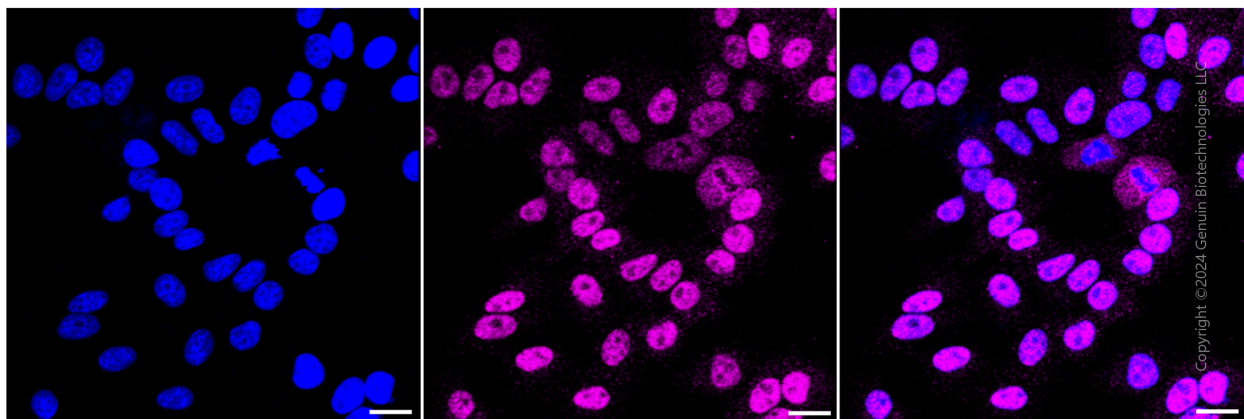
PAGE 2

Note: This product is for research use only.

Validation Data



Copyright ©2024 Genuin Biotechnologies LLC



Copyright ©2024 Genuin Biotechnologies LLC

SUPPORT

SUPPORT@GENUINBIOTECH.COM
TEL: +1-540-855-7041

ORDERS

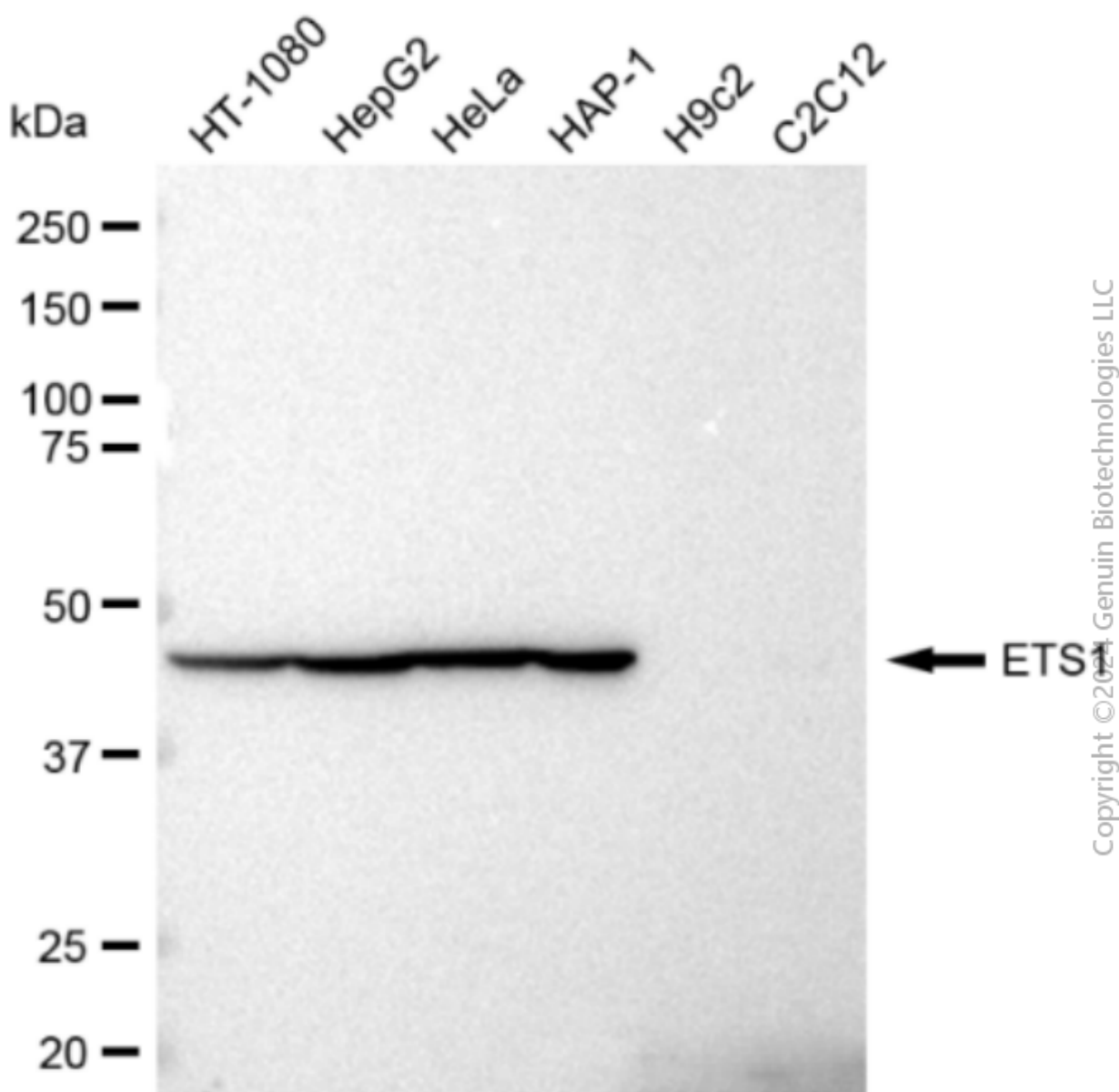
SALES@GENUINBIOTECH.COM
FAX: +1-540-855-7041

WWW.GENUINBIOTECH.COM

Anti-ETS1 Recombinant Rabbit Monoclonal Antibody

PAGE 3

Immunocytochemical staining of HepG2 cells with ETS1 antibody (Cat#2771, 1:1,000). Nuclei were stained blue with DAPI; ETS1 was stained magenta with Alexa Fluor® 647. Images were taken using Leica stellaris 5. Protein abundance based on laser Intensity and smart gain: Medium. Scale bar: 20 μ m.



Western blotting analysis using anti-ETS1 antibody (Cat#2771). Total cell lysates (30 μ g) from various cell lines were loaded and separated by SDS-PAGE. The blot was incubated with anti-ETS1 antibody (Cat#2771, 1:5,000) and HRP-conjugated goat anti-rabbit secondary antibody (Cat#201, 1:20,000) respectively. Image was developed using FeQ™ ECL Substrate Kit (Cat#226).

SUPPORT

SUPPORT@GENUINBIOTECH.COM
TEL: +1-540-855-7041

ORDERS

SALES@GENUINBIOTECH.COM
FAX: +1-540-855-7041

WWW.GENUINBIOTECH.COM