

# Anti-X-Ray Repair Cross Complementing 1 Recombinant Rabbit Monoclonal Antibody



**Catalog #: 2772**

## Aliases

XRCC1; X-Ray Repair Cross Complementing 1; DNA Repair Protein XRCC1; X-Ray Repair Complementing Defective Repair In Chinese Hamster Cells 1; X-Ray Repair Cross-Complementing Protein 1; RCC; SCAR26

## Background

Gene Name: XRCC1

NCBI Gene Entry: [7515](#)

UniProt Entry: [P18887](#)

## Application Information

Molecular Weight: Predicted, 69 kDa; observed, 90 kDa

Clonality: Rabbit monoclonal antibody

Clone ID: 24GB2180

Species Reactivity: Human, mouse, rat

Applications Tested: Western blotting (WB), flow cytometry (FCM), immunocytochemistry (IC)

## Immunogen

A synthesized peptide derived from human XRCC1

## Isotype

Rabbit IgG

## Storage Buffer

Supplied in PBS (pH 7.4) containing 50% glycerol, and 0.02% sodium azide.

## Storage

Store at -20 °C for one year.

## Recommended Dilutions

Western Blotting (WB): 1:1,000-1:5,000

Flow Cytometry (FCM): 1:2,000

Immunocytochemistry (IC): 1:100-1:1,000

**Note:** This product is for research use only.

---

### SUPPORT

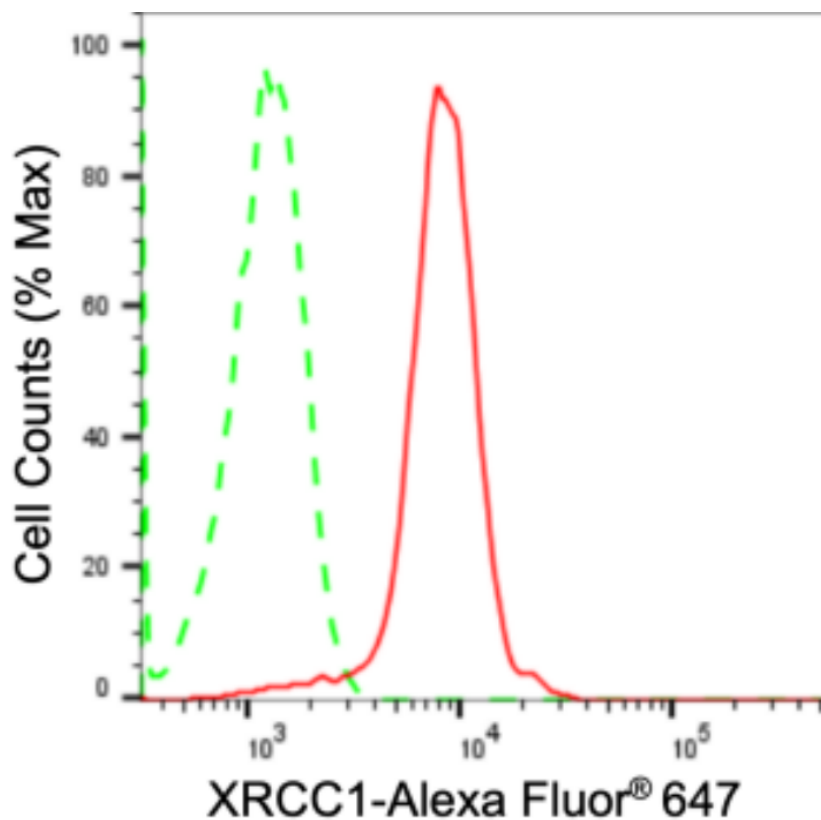
SUPPORT@GENUINBIOTECH.COM  
TEL: +1-540-855-7041

### ORDERS

SALES@GENUINBIOTECH.COM  
FAX: +1-540-855-7041

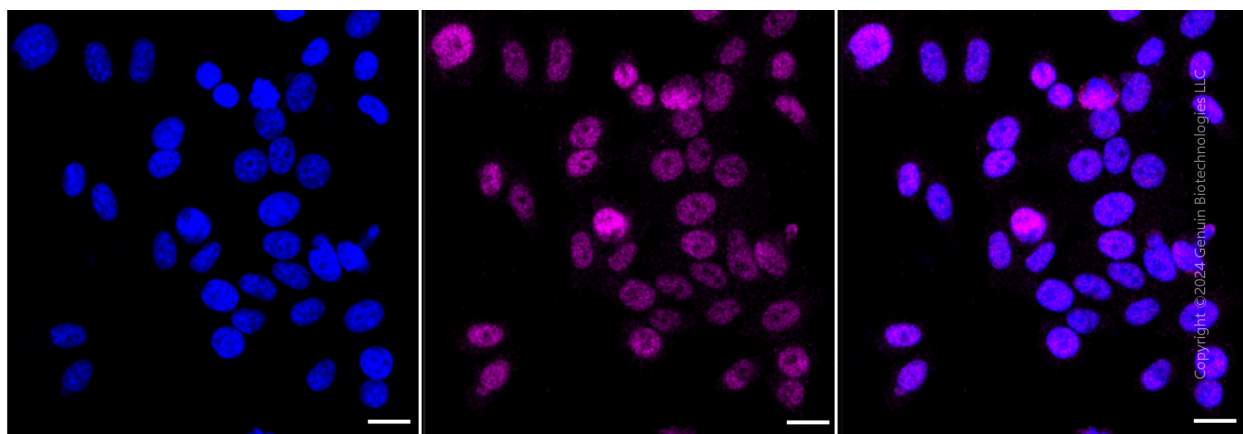
[WWW.GENUINBIOTECH.COM](http://WWW.GENUINBIOTECH.COM)

## Validation Data



Copyright ©2024 Genuin Biotechnologies LLC

Flow cytometric analysis of XRCC1 expression in HepG2 cells using anti-XRCC1 antibody (Cat#2772, 1:2,000). Green, isotype control; red, XRCC1.



Copyright ©2024 Genuin Biotechnologies LLC

Immunocytochemical staining of HepG2 cells with anti-XRCC1 antibody (Cat#2772, 1:1,000). Nuclei were stained blue with DAPI; XRCC1 was stained magenta with Alexa Fluor® 647. Images were taken using Leica stellaris 5. Protein abundance based on laser Intensity and smart gain: Medium. Scale bar: 20  $\mu$ m.

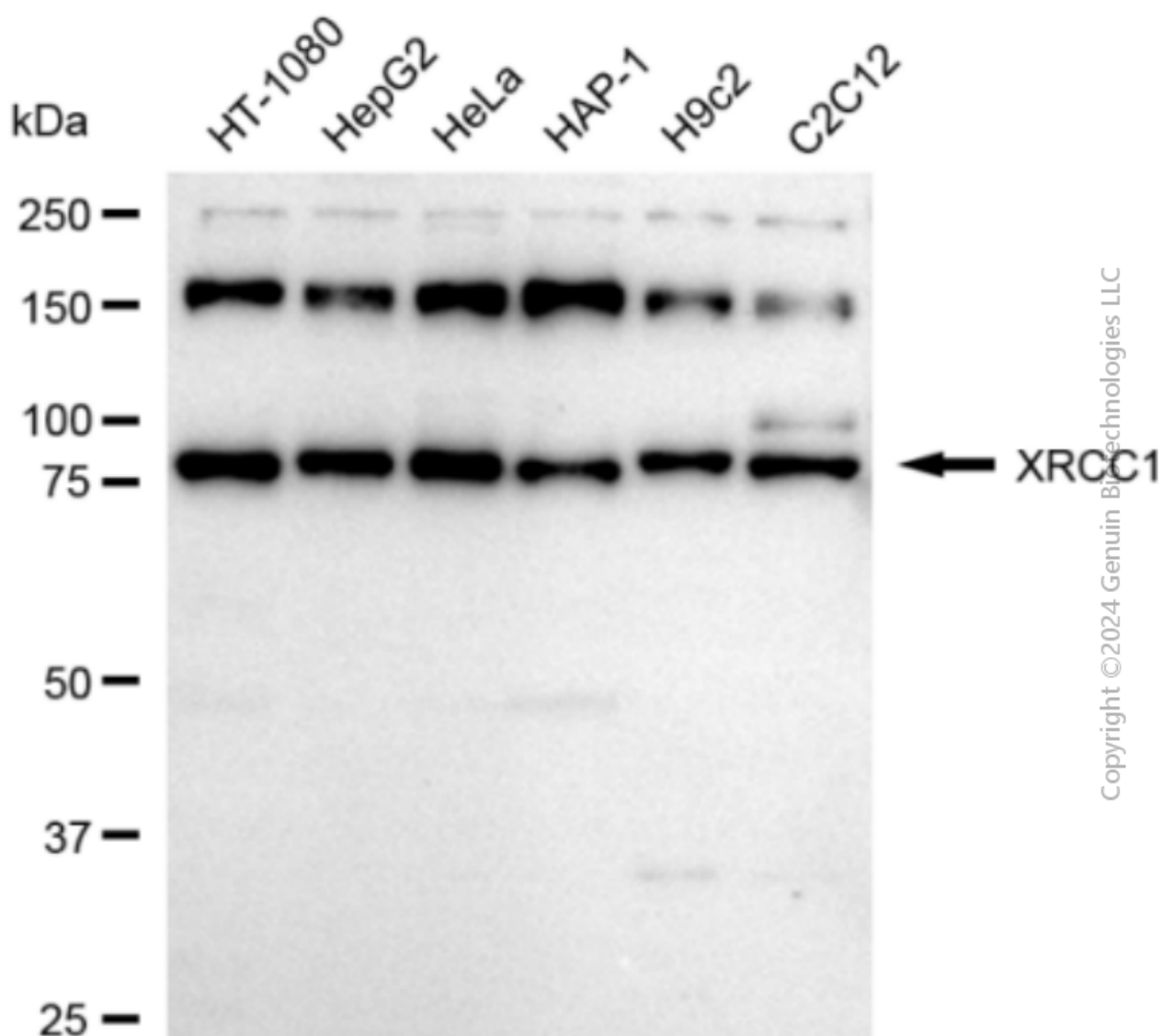
### SUPPORT

SUPPORT@GENUINBIOTECH.COM  
TEL: +1-540-855-7041

### ORDERS

SALES@GENUINBIOTECH.COM  
FAX: +1-540-855-7041

[WWW.GENUINBIOTECH.COM](http://WWW.GENUINBIOTECH.COM)



Copyright ©2024 Genuin Biotechnologies LLC

Western blotting analysis using anti-XRCC1 antibody (Cat#2772). Total cell lysates (30 µg) from various cell lines were loaded and separated by SDS-PAGE. The blot was incubated with anti-XRCC1 antibody (Cat#2772, 1:5,000) and HRP-conjugated goat anti-rabbit secondary antibody (Cat#201, 1:20,000) respectively. Image was developed using FeQ™ ECL Substrate Kit (Cat#226).