

# Anti-ULK1 Recombinant Rabbit Monoclonal Antibody



**Catalog #: 2773**

## Aliases

ULK1; Unc-51 Like Autophagy Activating Kinase 1; ATG1; ATG1A; Serine/Threonine-Protein Kinase ULK1; Autophagy-Related Protein 1 Homolog; EC 2.7.11.1; HATG1; ATG1 Autophagy Related 1 Homolog (S. Cerevisiae); Unc-51 (C. Elegans)-Like Kinase 1; Unc-51-Like Kinase 1 (C. Elegans); ATG1 Autophagy Related 1 Homolog; Unc-51-Like Kinase 1; EC 2.7.11; KIAA0722; Unc51.1; UNC51

## Background

Gene Name: ULK1

NCBI Gene Entry: [8408](#)

UniProt Entry: [O75385](#)

## Application Information

Molecular Weight: Predicted, 113 kDa; observed, 120 kDa

Clonality: Rabbit monoclonal antibody

Clone ID: 24GB2195

Species Reactivity: Human, mouse, rat

Applications Tested: Western blotting (WB), flow cytometry (FCM), immunocytochemistry (IC)

## Immunogen

A synthesized peptide derived from human ULK1

## Isotype

Rabbit IgG

## Storage Buffer

Supplied in PBS (pH 7.4) containing 50% glycerol, and 0.02% sodium azide.

## Storage

Store at -20 °C for one year.

## Recommended Dilutions

Western Blotting (WB): 1:1,000-1:5,000

Flow Cytometry (FCM): 1:2,000

Immunocytochemistry (IC): 1:100-1:1,000

---

### SUPPORT

SUPPORT@GENUINBIOTECH.COM  
TEL: +1-540-855-7041

### ORDERS

SALES@GENUINBIOTECH.COM  
FAX: +1-540-855-7041

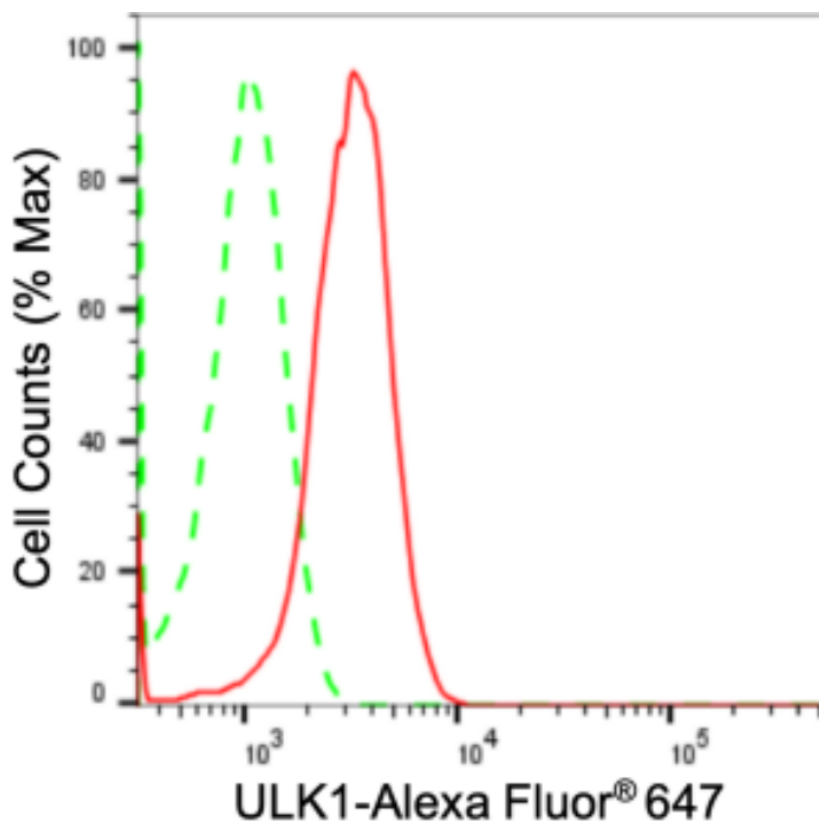
[WWW.GENUINBIOTECH.COM](http://WWW.GENUINBIOTECH.COM)

# Anti-ULK1 Recombinant Rabbit Monoclonal Antibody

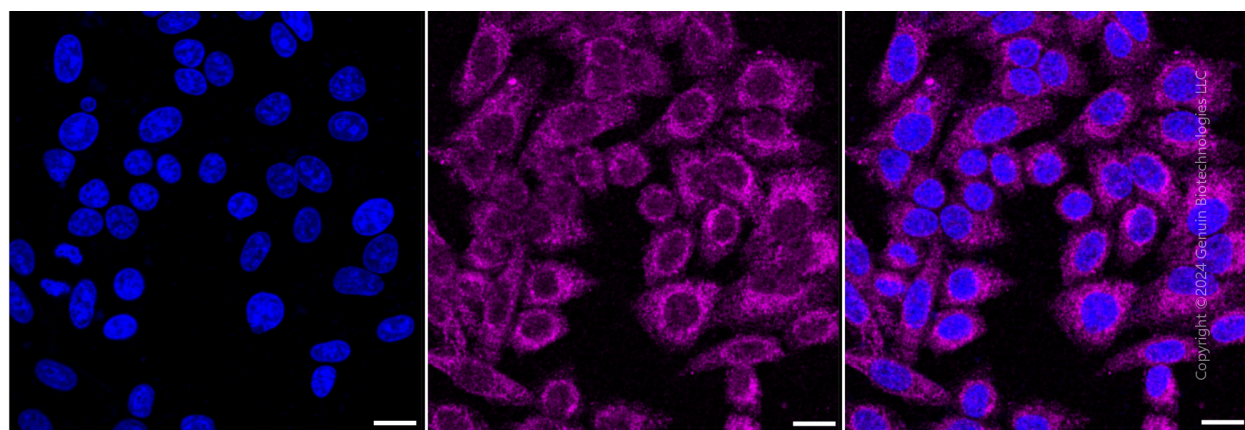
PAGE 2

**Note:** This product is for research use only.

## Validation Data



Copyright ©2024 Genuin Biotechnologies LLC



Copyright ©2024 Genuin Biotechnologies LLC

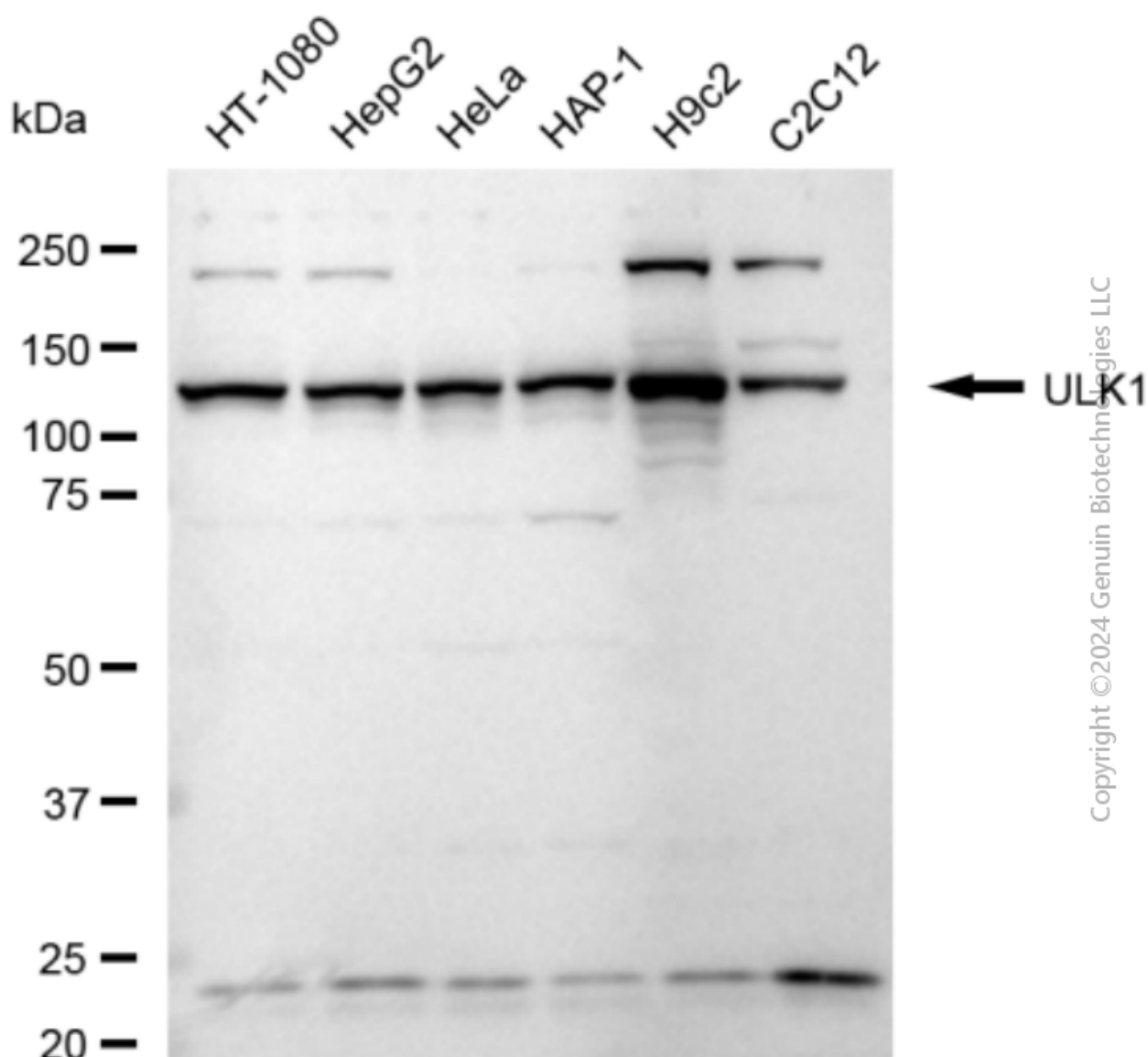
### SUPPORT

SUPPORT@GENUINBIOTECH.COM  
TEL: +1-540-855-7041

### ORDERS

SALES@GENUINBIOTECH.COM  
FAX: +1-540-855-7041

[WWW.GENUINBIOTECH.COM](http://WWW.GENUINBIOTECH.COM)



Western blotting analysis using anti-ULK1 antibody (Cat#2773). Total cell lysates (30 µg) from various cell lines were loaded and separated by SDS-PAGE. The blot was incubated with anti-ULK1 antibody (Cat#2773, 1:5,000) and HRP-conjugated goat anti-rabbit secondary antibody (Cat#201, 1:20,000) respectively. Image was developed using FeQ™ ECL Substrate Kit (Cat#226).