

Anti-Slit Guidance Ligand 2 Recombinant Rabbit Monoclonal Antibody



Catalog #: 2774

Aliases

SLIT2; Slit Guidance Ligand 2; Slit-2; SLIL3; Slit Homolog 2 Protein; Slit (Drosophila) Homolog 2; Slit Homolog 2 (Drosophila)

Background

Gene Name: SLIT2

NCBI Gene Entry: [9353](#)

UniProt Entry: [O94813](#)

Application Information

Molecular Weight: Predicted, 170 kDa; observed, 48 kDa

Clonality: Rabbit monoclonal antibody

Clone ID: 24GB2210

Species Reactivity: Human, mouse, rat

Applications Tested: Western blotting (WB), flow cytometry (FCM), immunocytochemistry (IC)

Immunogen

A synthesized peptide derived from human Slit2

Isotype

Rabbit IgG

Storage Buffer

Supplied in PBS (pH 7.4) containing 50% glycerol, and 0.02% sodium azide.

Storage

Store at -20 °C for one year.

Recommended Dilutions

Western Blotting (WB): 1:1,000-1:5,000

Flow Cytometry (FCM): 1:2,000

Immunocytochemistry (IC): 1:100-1:1,000

Note: This product is for research use only.

Validation Data

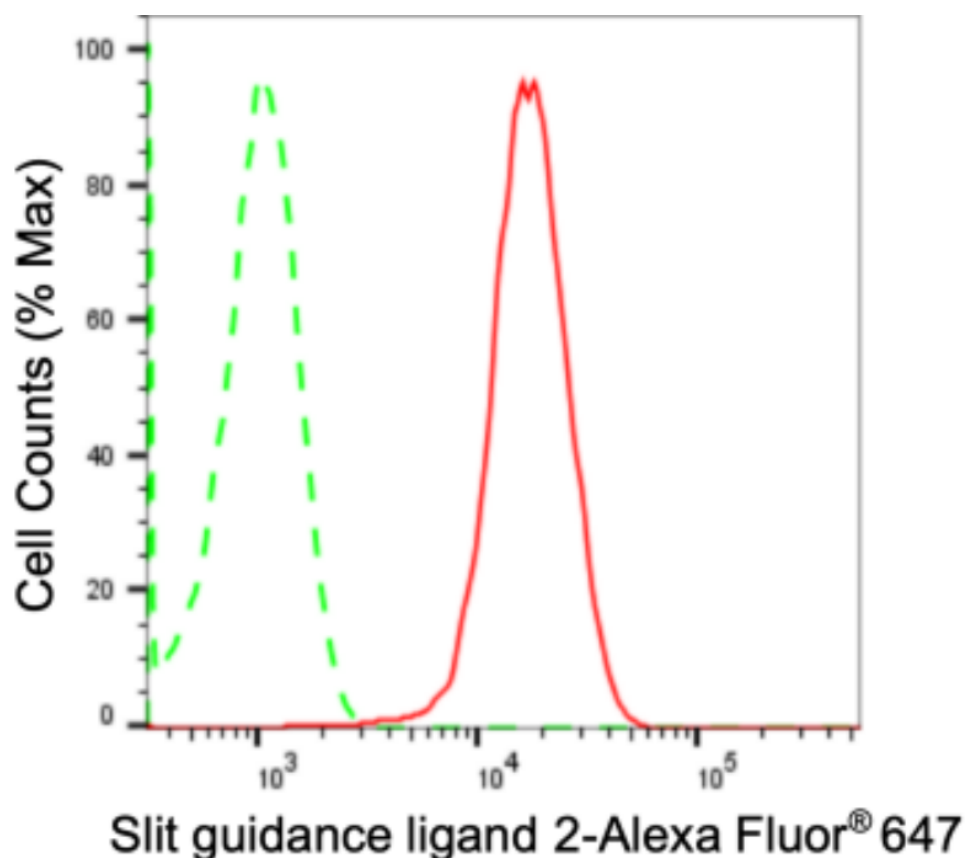
SUPPORT

SUPPORT@GENUINBIOTECH.COM
TEL: +1-540-855-7041

ORDERS

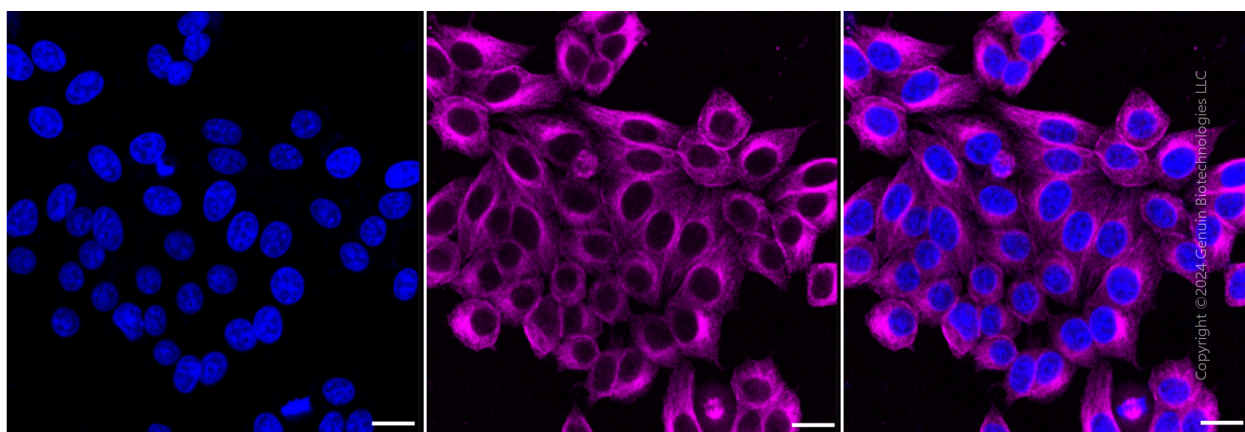
SALES@GENUINBIOTECH.COM
FAX: +1-540-855-7041

WWW.GENUINBIOTECH.COM



Copyright ©2024 Genuin Biotechnologies LLC

Flow cytometric analysis of Slit guidance ligand 2 expression in HepG2 cells using anti-Slit guidance ligand 2 antibody (Cat#2774, 1:2,000). Green, isotype control; red, Slit guidance ligand 2.



Copyright ©2024 Genuin Biotechnologies LLC

Immunocytochemical staining of HepG2 cells with anti-Slit guidance ligand 2 antibody (Cat#2774, 1:1,000). Nuclei were stained blue with DAPI; Slit guidance ligand 2 was stained magenta with Alexa Fluor® 647. Images were taken using Leica stellaris 5. Protein abundance based on laser Intensity and smart gain: Medium. Scale bar: 20 μ m.

SUPPORT

SUPPORT@GENUINBIOTECH.COM
TEL: +1-540-855-7041

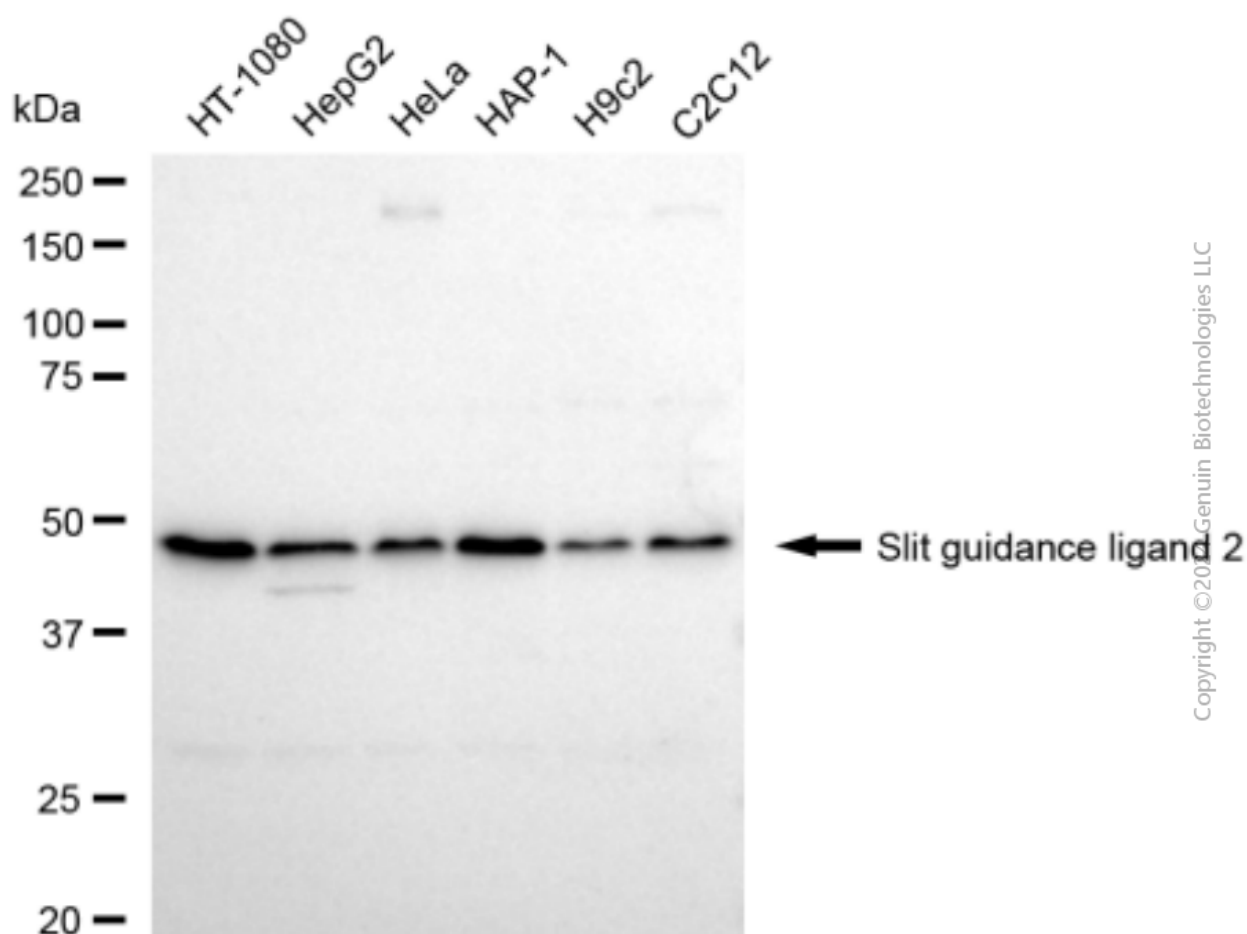
ORDERS

SALES@GENUINBIOTECH.COM
FAX: +1-540-855-7041

WWW.GENUINBIOTECH.COM

Anti-Slit Guidance Ligand 2 Recombinant Rabbit Monoclonal Antibody

PAGE 3



Western blotting analysis using anti-slit guidance ligand 2 antibody (Cat#2774). Total cell lysates (30 µg) from various cell lines were loaded and separated by SDS-PAGE. The blot was incubated with anti-slit guidance ligand 2 antibody (Cat#2774, 1:5,000) and HRP-conjugated goat anti-rabbit secondary antibody (Cat#201, 1:20,000) respectively. Image was developed using FeQ™ ECL Substrate Kit (Cat#226).

SUPPORT

SUPPORT@GENUINBIOTECH.COM
TEL: +1-540-855-7041

ORDERS

SALES@GENUINBIOTECH.COM
FAX: +1-540-855-7041

WWW.GENUINBIOTECH.COM