

Anti-Solute Carrier Family 7 Member 11 Recombinant Rabbit Monoclonal Antibody



Catalog #: 2775

Aliases

SLC7A11; Solute Carrier Family 7 Member 11; XCT; Solute Carrier Family 7 (Anionic Amino Acid Transporter Light Chain, Xc- System), Member 11; Calcium Channel Blocker Resistance Protein CCBR1; Amino Acid Transport System Xc-; Cystine/Glutamate Transporter; Solute Carrier Family 7, (Cationic Amino Acid Transporter, Y+ System) Member 11; CCBR1

Background

Gene Name: SLC7A11

NCBI Gene Entry: [23657](#)

UniProt Entry: [Q9UPY5](#)

Application Information

Molecular Weight: Predicted, 55 kDa; observed, 55 kDa

Clonality: Rabbit monoclonal antibody

Clone ID: 24GB2215

Species Reactivity: Human, mouse, rat

Applications Tested: Western blotting (WB), flow cytometry (FCM), immunocytochemistry (IC)

Immunogen

A synthesized peptide derived from human xCT

Isotype

Rabbit IgG

Storage Buffer

Supplied in PBS (pH 7.4) containing 50% glycerol, and 0.02% sodium azide.

Storage

Store at -20 °C for one year.

Recommended Dilutions

Western Blotting (WB): 1:1,000-1:5,000

Flow Cytometry (FCM): 1:2,000

Immunocytochemistry (IC): 1:100-1:1,000

SUPPORT

SUPPORT@GENUINBIOTECH.COM
TEL: +1-540-855-7041

ORDERS

SALES@GENUINBIOTECH.COM
FAX: +1-540-855-7041

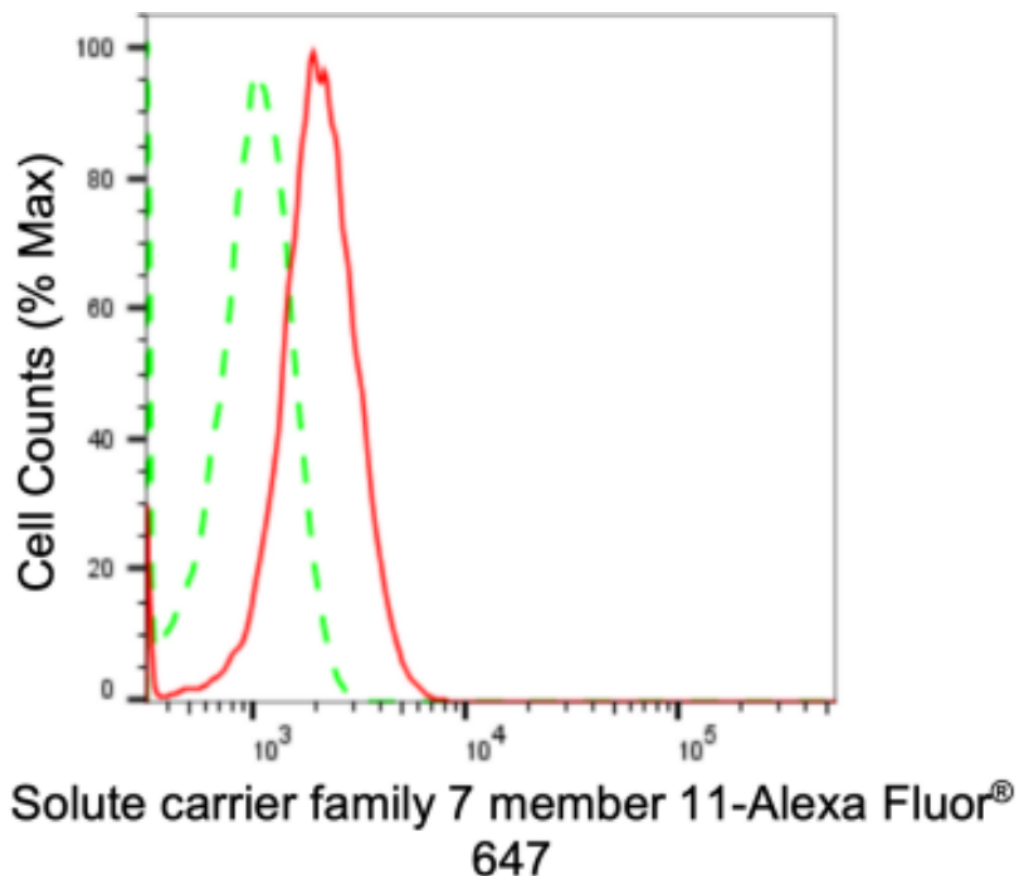
WWW.GENUINBIOTECH.COM

Anti-Solute Carrier Family 7 Member 11 Recombinant Rabbit Monoclonal Antibody

PAGE 2

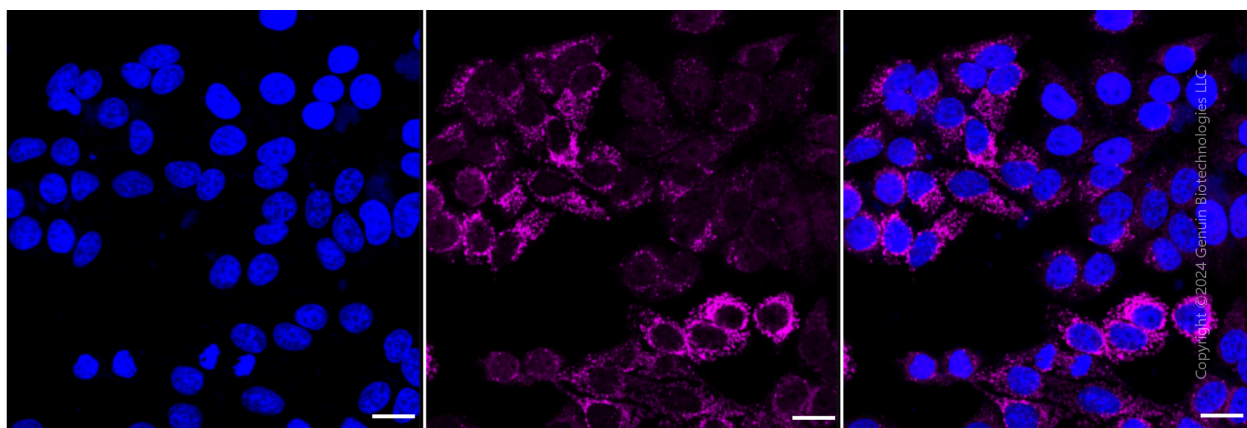
Note: This product is for research use only.

Validation Data



Copyright ©2024 Genuin Biotechnologies LLC

Flow cytometric analysis of Solute carrier family 7 member 11 expression in HepG2 cells using anti-Solute carrier family 7 member 11 antibody (Cat#2775, 1:2,000). Green, isotype control; red, Solute carrier family 7 member 11.



Immunocytochemical staining of HepG2 cells with anti-Solute carrier family 7 member 11 antibody (Cat#2775, 1:1,000). Nuclei were stained blue with DAPI; Solute carrier family 7 member 11 was stained magenta with Alexa Fluor® 647. Images were taken using Leica stellaris

SUPPORT

SUPPORT@GENUINBIOTECH.COM
TEL: +1-540-855-7041

ORDERS

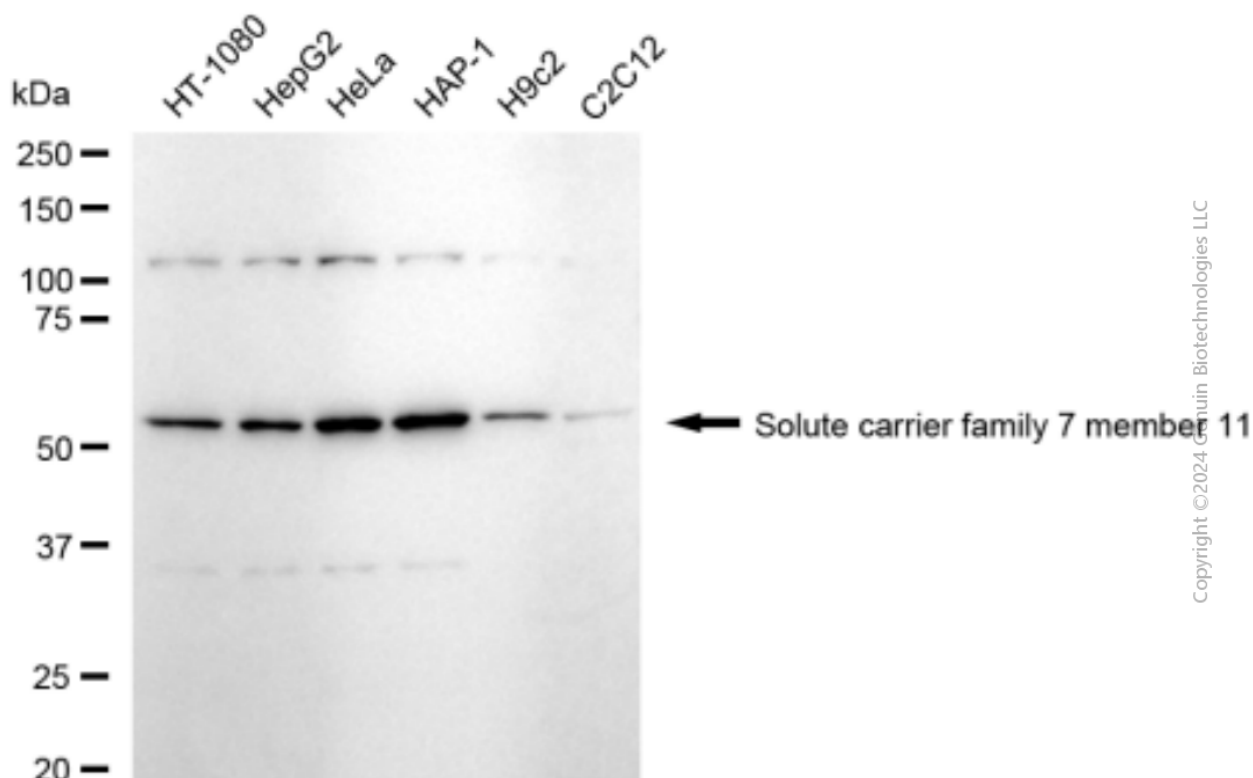
SALES@GENUINBIOTECH.COM
FAX: +1-540-855-7041

WWW.GENUINBIOTECH.COM

Anti-Solute Carrier Family 7 Member 11 Recombinant Rabbit Monoclonal Antibody

PAGE 3

5. Protein abundance based on laser Intensity and smart gain: Medium. Scale bar: 20 μ m.



Western blotting analysis using anti-solute carrier family 7 member 11 antibody (Cat#2775). Total cell lysates (30 μ g) from various cell lines were loaded and separated by SDS-PAGE. The blot was incubated with anti-solute carrier family 7 member 11 antibody (Cat#2775, 1:5,000) and HRP-conjugated goat anti-rabbit secondary antibody (Cat#201, 1:20,000) respectively. Image was developed using FeQ™ ECL Substrate Kit (Cat#226).

SUPPORT

SUPPORT@GENUINBIOTECH.COM
TEL: +1-540-855-7041

ORDERS

SALES@GENUINBIOTECH.COM
FAX: +1-540-855-7041

WWW.GENUINBIOTECH.COM