

Anti-STAG2 Cohesin Complex Component Recombinant Rabbit Monoclonal Antibody



Catalog #: 2778

Aliases

STAG2; STAG2 Cohesin Complex Component; Stromal Antigen 2; SA2; Cohesin Subunit SA-2; SCC3B; SA-2; SCC3 Homolog; SA2 Stromalin; Sister Chromatid Cohesion 3 Homolog (S. Cerevisiae) B; Sister Chromatid Cohesion 3 Homolog B; BA517O1.1; NEDXCF; HPE13; MKMS

Background

Gene Name: STAG2

NCBI Gene Entry: [10735](#)

UniProt Entry: [Q8N3U4](#)

Application Information

Molecular Weight: Predicted, 141 kDa; observed, 141 kDa

Clonality: Rabbit monoclonal antibody

Clone ID: 24GB2240

Species Reactivity: Human, mouse, rat

Applications Tested: Western blotting (WB), flow cytometry (FCM), immunocytochemistry (IC)

Immunogen

A synthesized peptide derived from human SA2

Isotype

Rabbit IgG

Storage Buffer

Supplied in PBS (pH 7.4) containing 50% glycerol, and 0.02% sodium azide.

Storage

Store at -20 °C for one year.

Recommended Dilutions

Western Blotting (WB): 1:1,000-1:5,000

Flow Cytometry (FCM): 1:2,000

Immunocytochemistry (IC): 1:100-1:1,000

Note: This product is for research use only.

SUPPORT

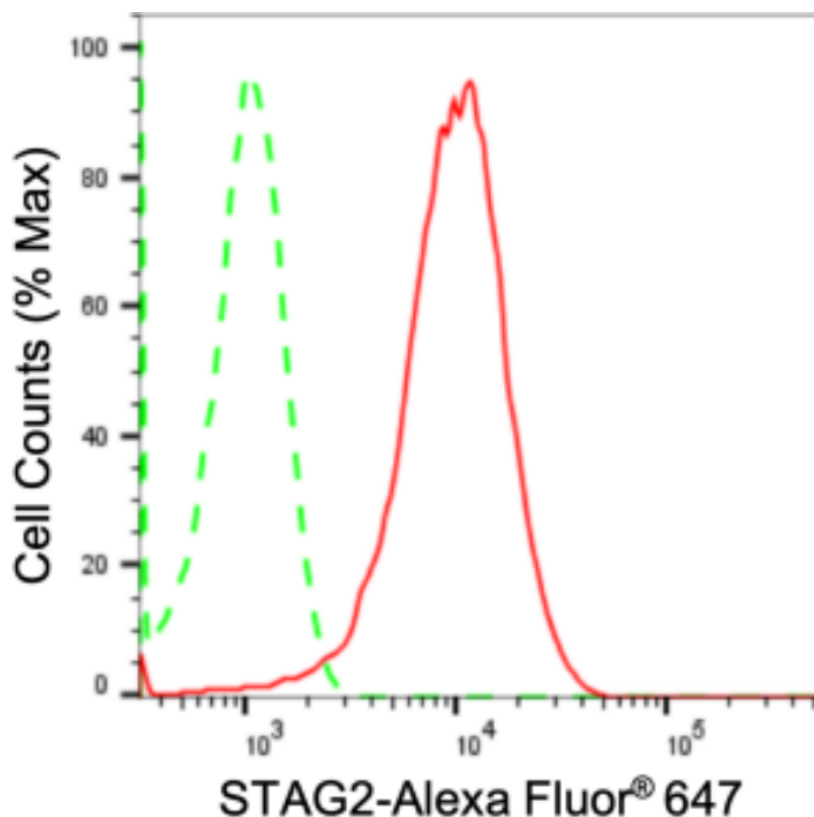
SUPPORT@GENUINBIOTECH.COM
TEL: +1-540-855-7041

ORDERS

SALES@GENUINBIOTECH.COM
FAX: +1-540-855-7041

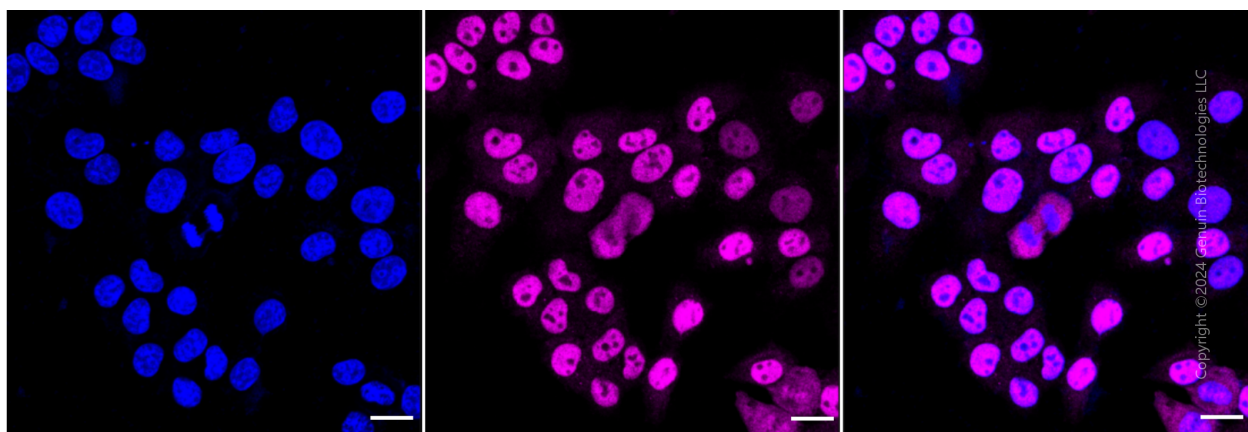
WWW.GENUINBIOTECH.COM

Validation Data



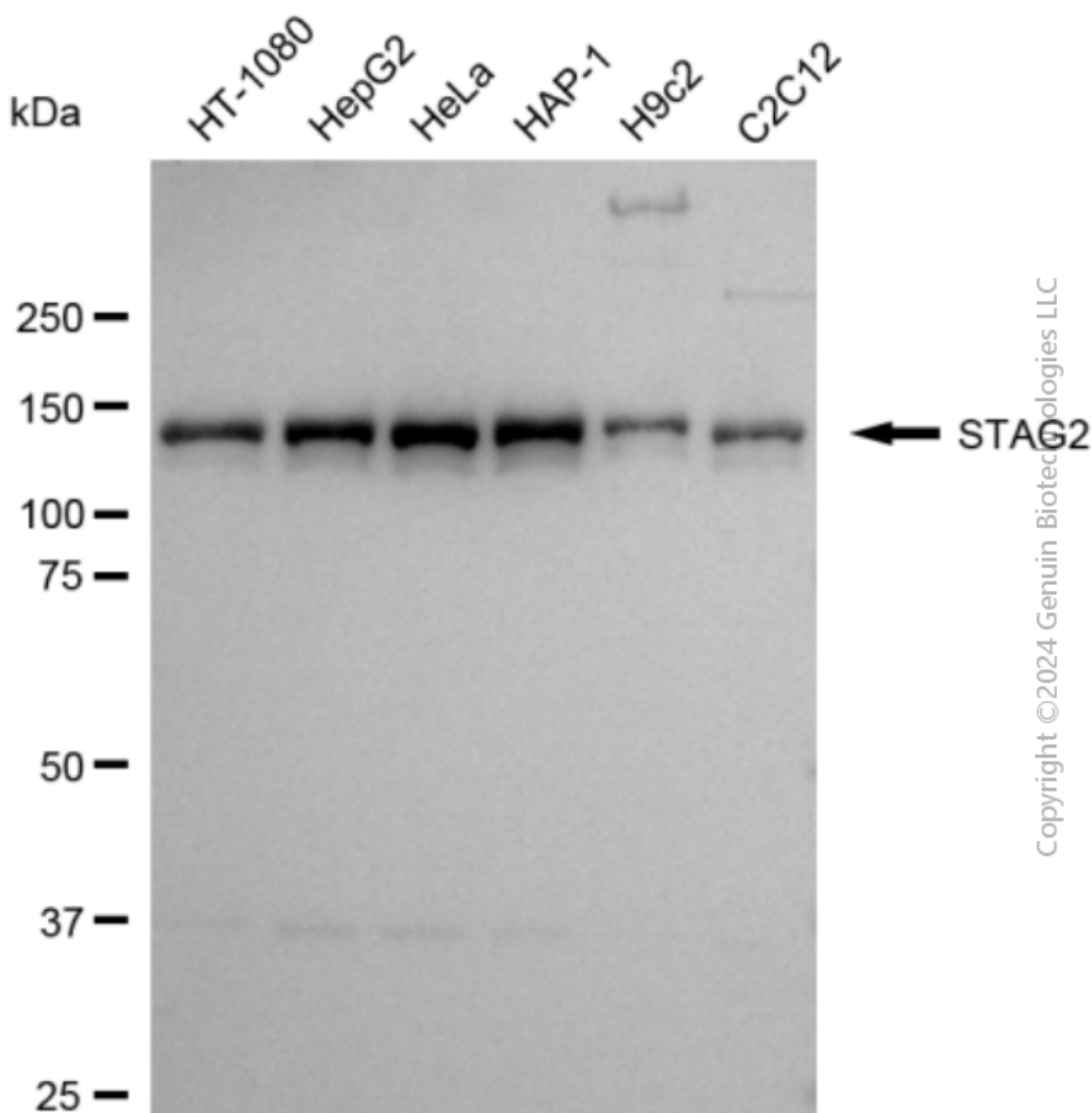
Copyright ©2024 Genuin Biotechnologies LLC

Flow cytometric analysis of STAG2 expression in HepG2 cells using anti-STAG2 antibody (Cat#2778, 1:2,000). Green, isotype control; red, STAG2.



Copyright ©2024 Genuin Biotechnologies LLC

Immunocytochemical staining of HepG2 cells with anti-STAG2 antibody (Cat#2778, 1:1,000). Nuclei were stained blue with DAPI; STAG2 was stained magenta with Alexa Fluor® 647. Images were taken using Leica stellaris 5. Protein abundance based on laser Intensity and smart gain: High. Scale bar: 20 μ m.



Copyright ©2024 Genuin Biotechnologies LLC

Western blotting analysis using anti-STAG2 antibody (Cat#2778). Total cell lysates (30 µg) from various cell lines were loaded and separated by SDS-PAGE. The blot was incubated with anti-STAG2 antibody (Cat#2778, 1:5,000) and HRP-conjugated goat anti-rabbit secondary antibody (Cat#201, 1:20,000) respectively. Image was developed using FeQ™ ECL Substrate Kit (Cat#226).