

Anti-UBA2 Recombinant Rabbit Monoclonal Antibody



Catalog #: 2779

Aliases

UBA2; Ubiquitin Like Modifier Activating Enzyme 2; HRIHFB2115; SAE2; Anthracycline-Associated Resistance ARX; Ubiquitin-Like 1-Activating Enzyme E1B; SUMO1 Activating Enzyme Subunit 2; SUMO-Activating Enzyme Subunit 2; FLJ13058; UBA2, Ubiquitin-Activating Enzyme E1 Homolog (Yeast); UBA2, Ubiquitin-Activating Enzyme E1 Homolog; Ubiquitin-Like Modifier Activating Enzyme 2; Ubiquitin-Like Modifier-Activating Enzyme 2; SUMO-1 Activating Enzyme Subunit 2; EC 2.3.2.-; EC 6.3.2; UBLE1B; ACCES; ARX

Background

Gene Name: UBA2

NCBI Gene Entry: [10054](#)

UniProt Entry: [Q9UBT2](#)

Application Information

Molecular Weight: Predicted, 71 kDa; observed, 90 kDa

Clonality: Rabbit monoclonal antibody

Clone ID: 24GB2275

Species Reactivity: Human, mouse, rat

Applications Tested: Western blotting (WB), immunocytochemistry (IC)

Immunogen

A synthesized peptide derived from human SAE2 / UBA2

Isotype

Rabbit IgG

Storage Buffer

Supplied in PBS (pH 7.4) containing 50% glycerol, and 0.02% sodium azide.

Storage

Store at -20 °C for one year.

Recommended Dilutions

Western Blotting (WB): 1:1,000-1:5,000

Immunocytochemistry (IC): 1:100-1:1,000

SUPPORT

SUPPORT@GENUINBIOTECH.COM
TEL: +1-540-855-7041

ORDERS

SALES@GENUINBIOTECH.COM
FAX: +1-540-855-7041

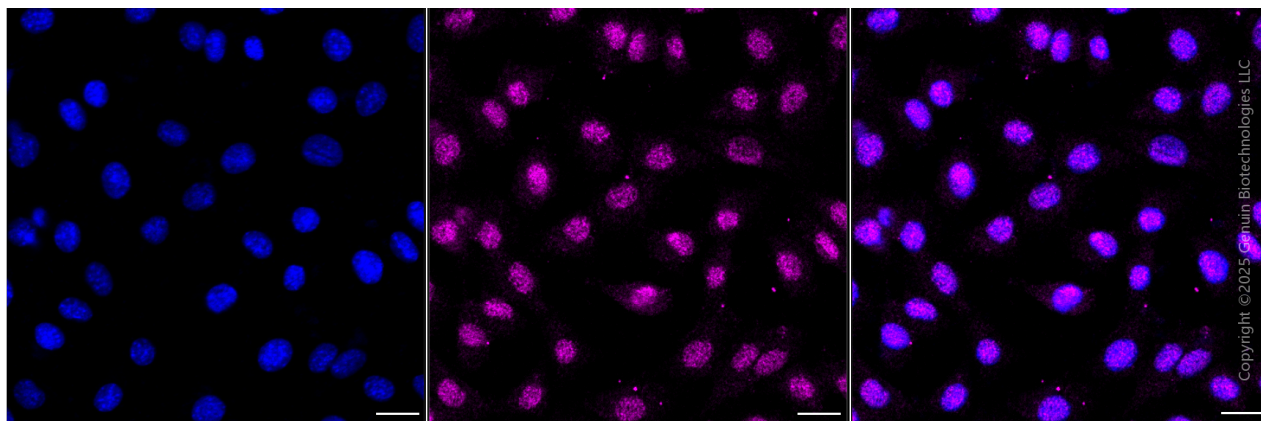
WWW.GENUINBIOTECH.COM

Anti-UBA2 Recombinant Rabbit Monoclonal Antibody

PAGE 2

Note: This product is for research use only.

Validation Data



Immunocytochemical staining of C2C12 cells with anti-UBA2 antibody (Cat#2779, 1:1,000) . Nuclei were stained blue with DAPI; UBA2 was stained magenta with Alexa Fluor® 647. Images were taken using Leica stellaris 5. Protein abundance based on laser Intensity and smart gain: Medium. Scale bar, 20 μ m.

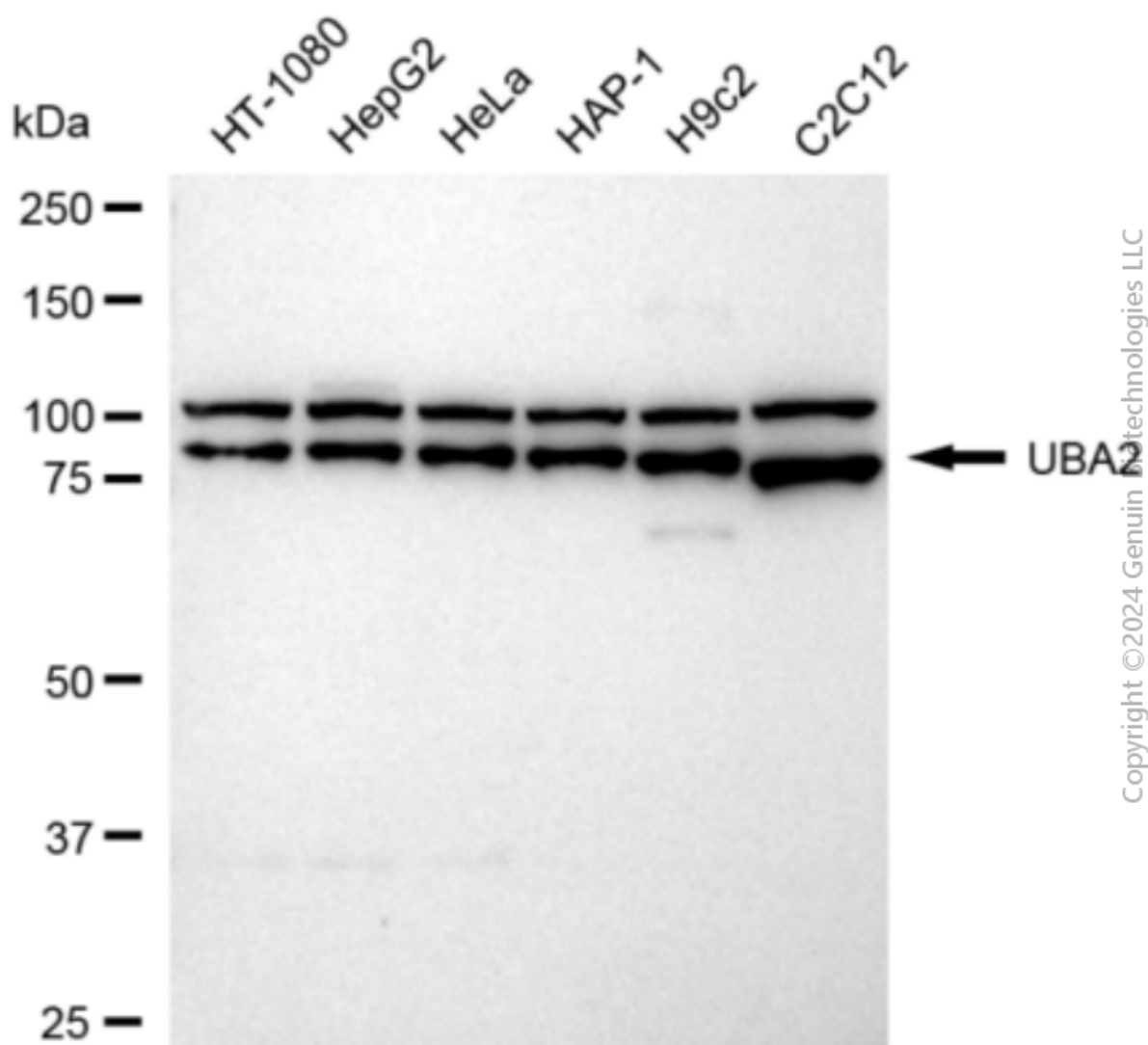
SUPPORT

SUPPORT@GENUINBIOTECH.COM
TEL: +1-540-855-7041

ORDERS

SALES@GENUINBIOTECH.COM
FAX: +1-540-855-7041

WWW.GENUINBIOTECH.COM



Western blotting analysis using anti-UBA2 antibody (Cat#2779). Total cell lysates (30 µg) from various cell lines were loaded and separated by SDS-PAGE. The blot was incubated with anti-UBA2 antibody (Cat#2779, 1:5,000) and HRP-conjugated goat anti-rabbit secondary antibody (Cat#201, 1:20,000) respectively. Image was developed using FeQ™ ECL Substrate Kit (Cat#226).