

Anti-Transmembrane Protein 192 Recombinant Rabbit Monoclonal Antibody



Catalog #: 2780

Aliases

TMEM192; Transmembrane Protein 192; FLJ38482

Background

Gene Name: TMEM192

NCBI Gene Entry: [201931](#)

UniProt Entry: [Q8IY95](#)

Application Information

Molecular Weight: Predicted, 31 kDa; observed, 29 kDa

Clonality: Rabbit monoclonal antibody

Clone ID: 24GB2305

Species Reactivity: Human, mouse

Applications Tested: Western blotting (WB), flow cytometry (FCM), immunocytochemistry (IC)

Immunogen

A synthesized peptide derived from human TMEM192

Isotype

Rabbit IgG

Storage Buffer

Supplied in PBS (pH 7.4) containing 50% glycerol, and 0.02% sodium azide.

Storage

Store at -20 °C for one year.

Recommended Dilutions

Western Blotting (WB): 1:1,000-1:5,000

Flow Cytometry (FCM): 1:2,000

Immunocytochemistry (IC): 1:100-1:1,000

Note: This product is for research use only.

Validation Data

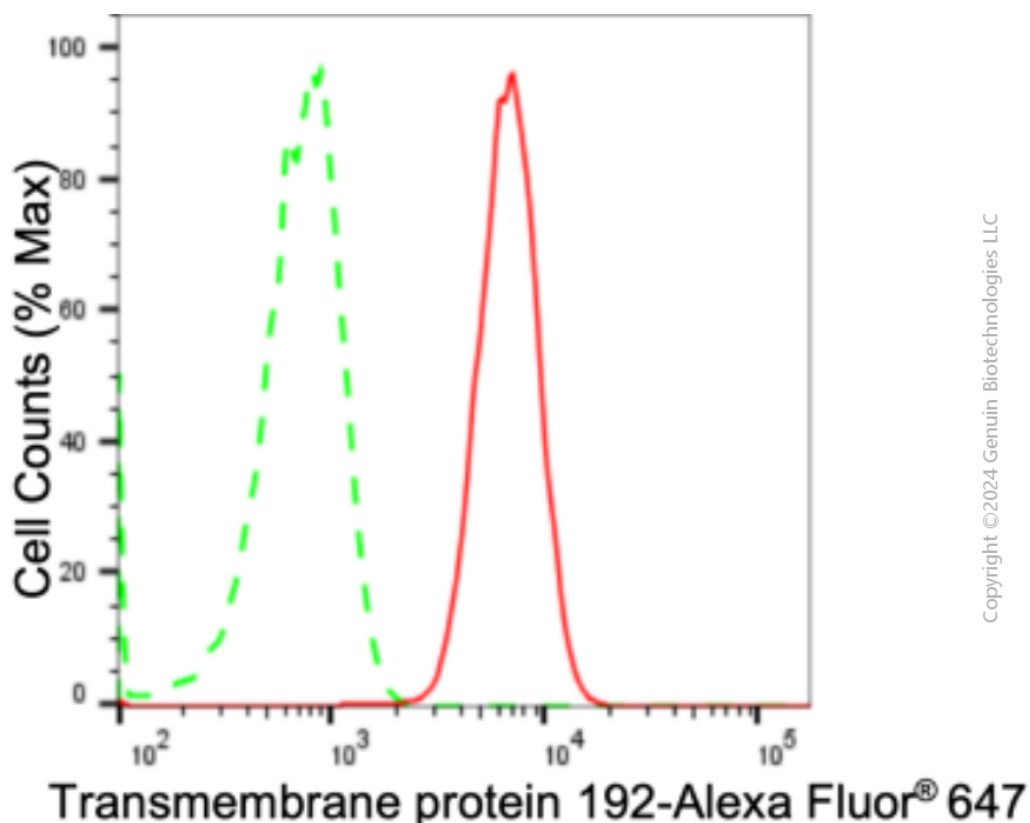
SUPPORT

SUPPORT@GENUINBIOTECH.COM
TEL: +1-540-855-7041

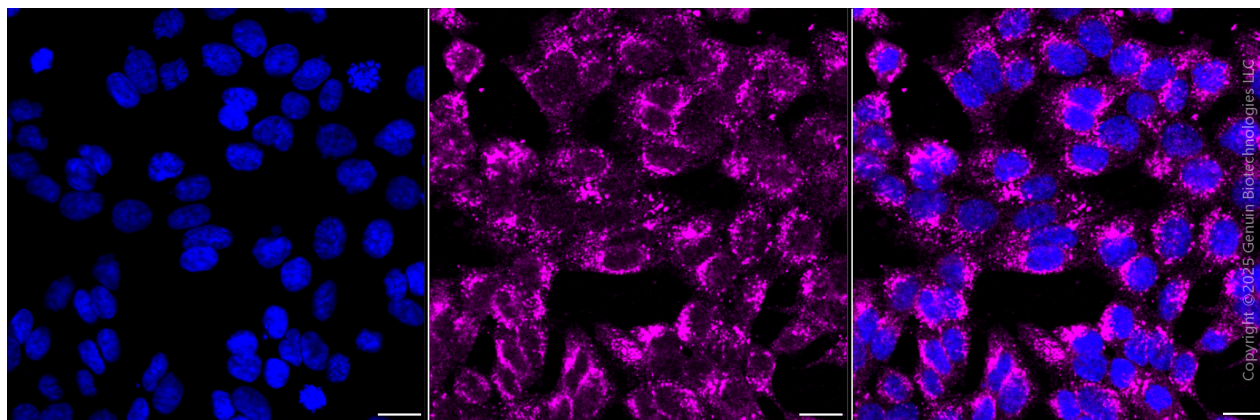
ORDERS

SALES@GENUINBIOTECH.COM
FAX: +1-540-855-7041

WWW.GENUINBIOTECH.COM



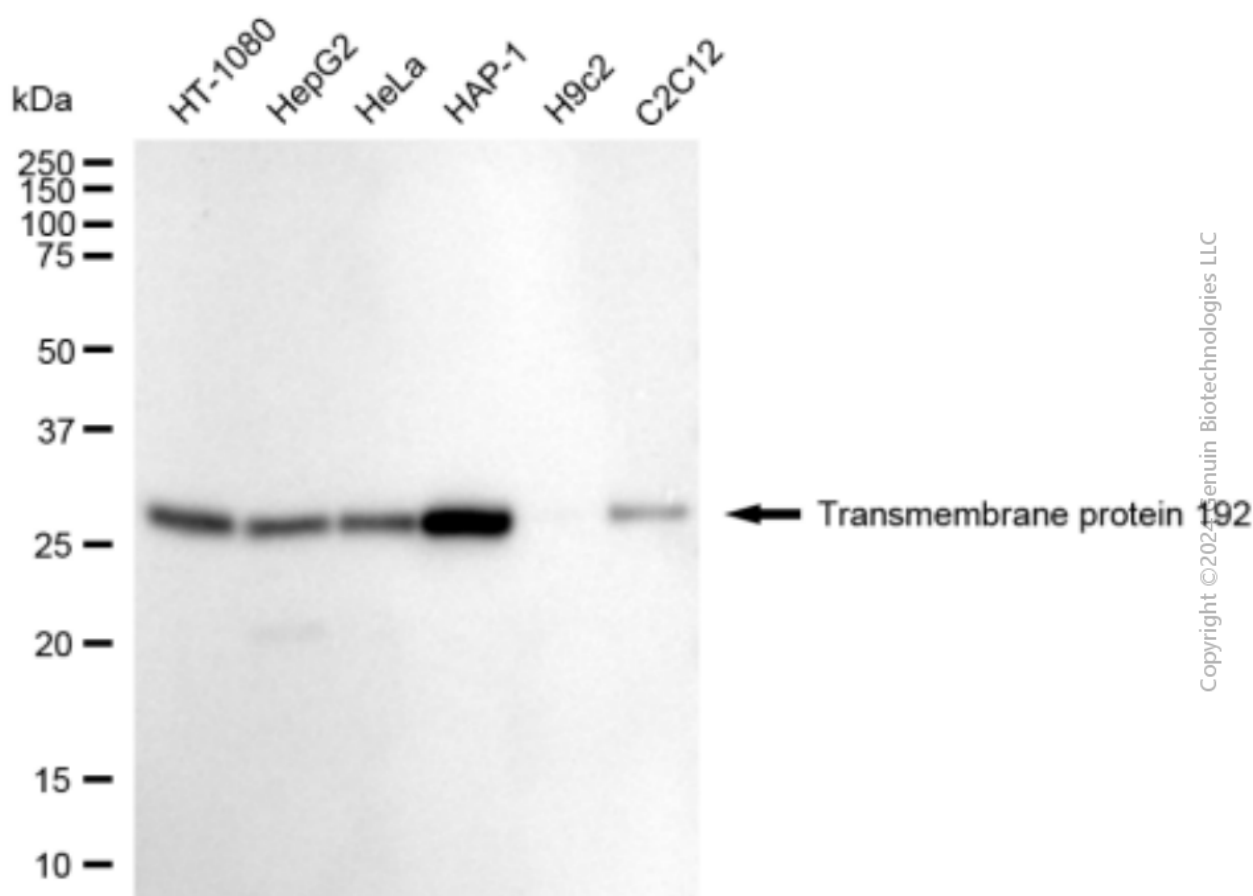
Flow cytometric analysis of Transmembrane protein 192 expression in HAP-1 cells using anti-Transmembrane protein 192 antibody (Cat#2780, 1:2,000). Green, isotype control; red, Transmembrane protein 192.



Immunocytochemical staining of HAP1 cells with anti-Transmembrane protein 192 antibody (Cat#2780, 1:1,000). Nuclei were stained blue with DAPI; Transmembrane protein 192 was stained magenta with Alexa Fluor® 647. Images were taken using Leica stellaris 5. Protein abundance based on laser Intensity and smart gain: Medium. Scale bar, 20 µm.

Anti-Transmembrane Protein 192 Recombinant Rabbit Monoclonal Antibody

PAGE 3



Western blotting analysis using anti-transmembrane protein 192 antibody (Cat#2780). Total cell lysates (30 µg) from various cell lines were loaded and separated by SDS-PAGE. The blot was incubated with anti-transmembrane protein 192 antibody (Cat#2780, 1:5,000) and HRP-conjugated goat anti-rabbit secondary antibody (Cat#201, 1:20,000) respectively. Image was developed using FeQ™ ECL Substrate Kit (Cat#226).

SUPPORT

SUPPORT@GENUINBIOTECH.COM
TEL: +1-540-855-7041

ORDERS

SALES@GENUINBIOTECH.COM
FAX: +1-540-855-7041

WWW.GENUINBIOTECH.COM