

Anti-Ubiquitin Specific Peptidase 22 Recombinant Rabbit Monoclonal Antibody



Catalog #: 2784

Aliases

USP22; Ubiquitin Specific Peptidase 22; KIAA1063; USP3L ; Ubiquitin Carboxyl-Terminal Hydrolase 22; Ubiquitin Specific Protease 22; Deubiquitinating Enzyme 22; Ubiquitin Thioesterase 22; Ubiquitin-Specific Processing Protease 22; Ubiquitin-Specific-Processing Protease 22; Ubiquitin Specific Peptidase 3-Like; Ubiquitin Thiolesterase 22; EC 3.4.19.12; EC 3.1.2.15

Background

Gene Name: USP22

NCBI Gene Entry: [23326](#)

UniProt Entry: [Q9UPT9](#)

Application Information

Molecular Weight: Predicted, 60 kDa; observed, 60 kDa

Clonality: Rabbit monoclonal antibody

Clone ID: 24GB2475

Species Reactivity: Human, mouse, rat

Applications Tested: Western blotting (WB), flow cytometry (FCM), immunocytochemistry (IC)

Immunogen

A synthesized peptide derived from human USP22

Isotype

Rabbit IgG

Storage Buffer

Supplied in PBS (pH 7.4) containing 50% glycerol, and 0.02% sodium azide.

Storage

Store at -20 °C for one year.

Recommended Dilutions

Western Blotting (WB): 1:1,000-1:5,000

Flow Cytometry (FCM): 1:2,000

Immunocytochemistry (IC): 1:100-1:1,000

SUPPORT

SUPPORT@GENUINBIOTECH.COM
TEL: +1-540-855-7041

ORDERS

SALES@GENUINBIOTECH.COM
FAX: +1-540-855-7041

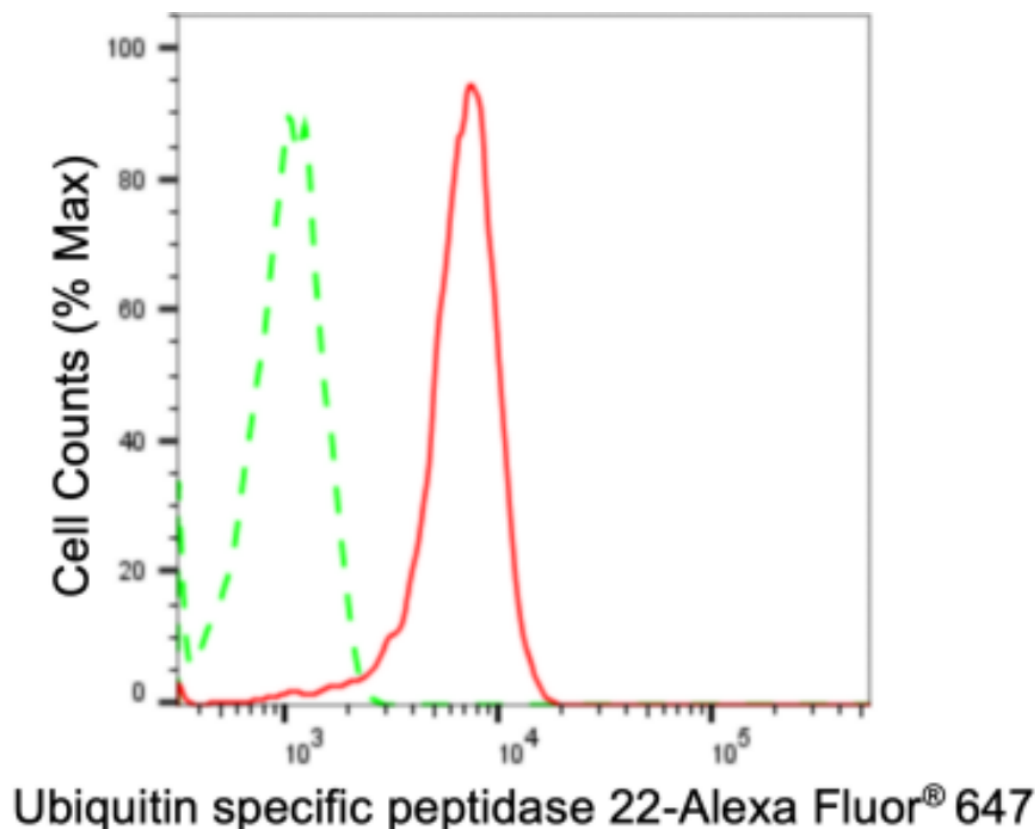
WWW.GENUINBIOTECH.COM

Anti-Ubiquitin Specific Peptidase 22 Recombinant Rabbit Monoclonal Antibody

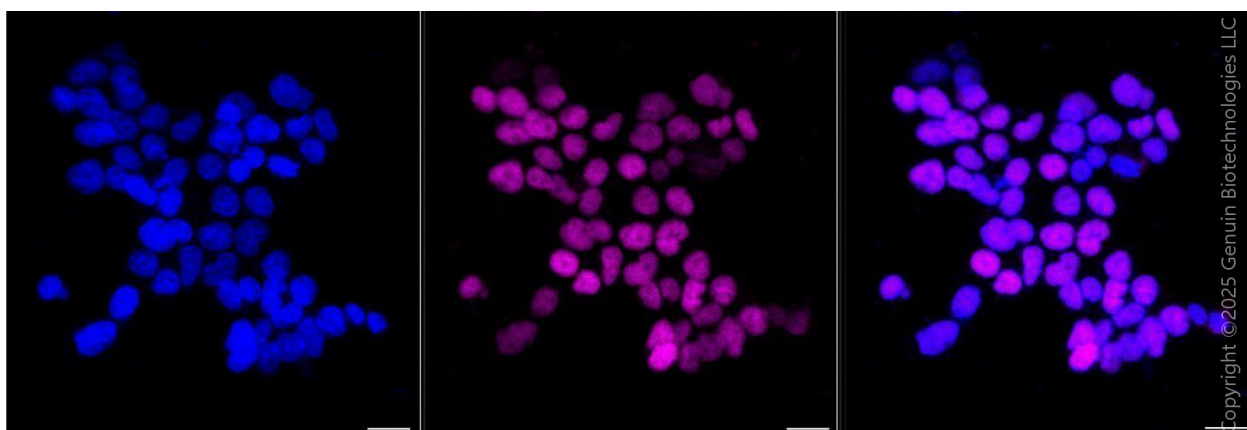
PAGE 2

Note: This product is for research use only.

Validation Data



Flow cytometric analysis of Ubiquitin specific peptidase 22 expression in HeLa cells using anti-Ubiquitin specific peptidase 22 antibody (Cat#2784, 1:2,000). Green, isotype control; red, Ubiquitin specific peptidase 22.



Immunocytochemical staining of HeLa cells with anti-Ubiquitin specific peptidase 22 antibody (Cat#2784, 1:1,000). Nuclei were stained blue with DAPI; Ubiquitin specific peptidase 22 was stained magenta with Alexa Fluor® 647. Images were taken using Leica stellaris 5. Protein abundance based on laser Intensity and smart gain: Medium. Scale bar, 20 μ m.

SUPPORT

SUPPORT@GENUINBIOTECH.COM
TEL: +1-540-855-7041

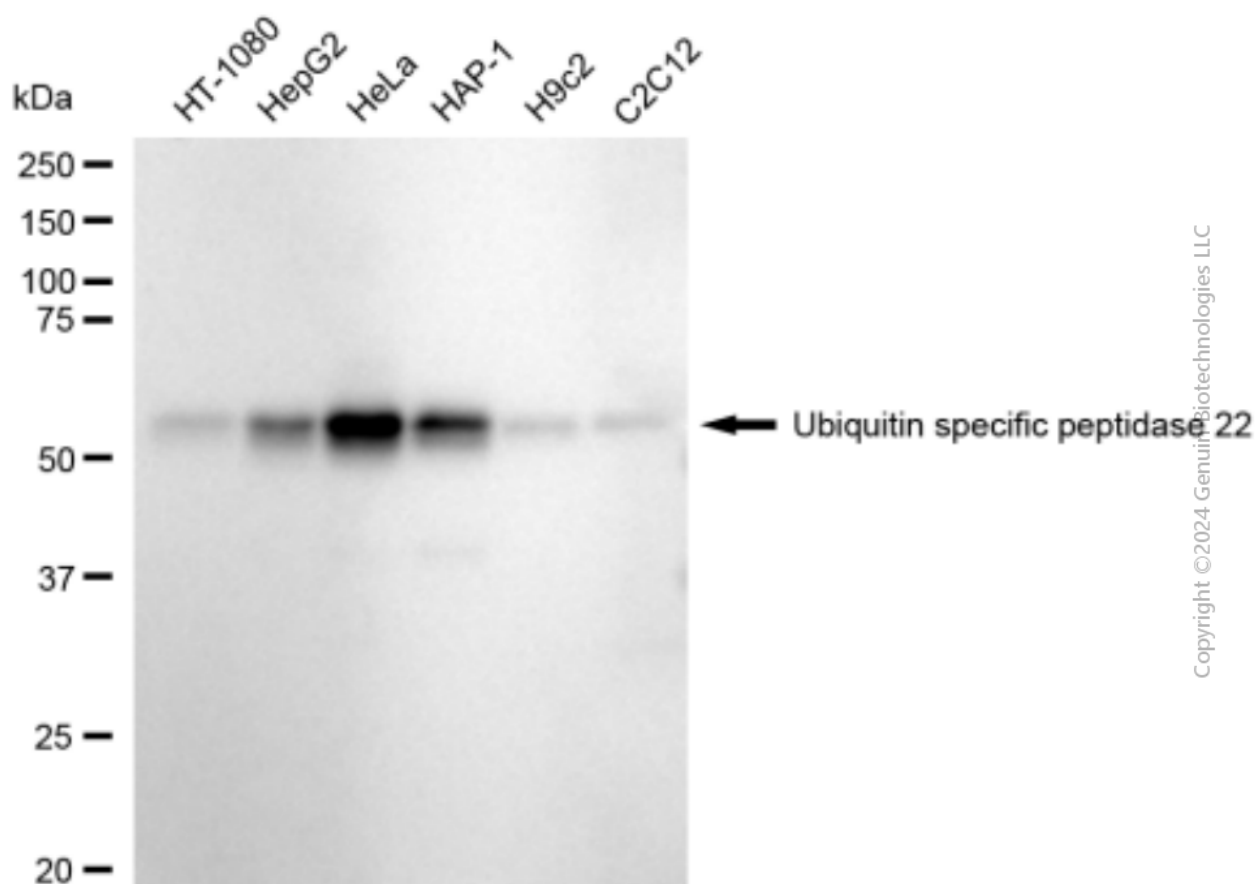
ORDERS

SALES@GENUINBIOTECH.COM
FAX: +1-540-855-7041

WWW.GENUINBIOTECH.COM

Anti-Ubiquitin Specific Peptidase 22 Recombinant Rabbit Monoclonal Antibody

PAGE 3



Western blotting analysis using anti-ubiquitin specific peptidase 22 antibody (Cat#2784). Total cell lysates (30 μ g) from various cell lines were loaded and separated by SDS-PAGE. The blot was incubated with anti-ubiquitin specific peptidase 22 antibody (Cat#2784, 1:5,000) and HRP-conjugated goat anti-rabbit secondary antibody (Cat#201, 1:20,000) respectively. Image was developed using FeQ™ ECL Substrate Kit (Cat#226).

SUPPORT

SUPPORT@GENUINBIOTECH.COM
TEL: +1-540-855-7041

ORDERS

SALES@GENUINBIOTECH.COM
FAX: +1-540-855-7041

WWW.GENUINBIOTECH.COM