

Anti-Tissue Factor Pathway Inhibitor Recombinant Rabbit Monoclonal Antibody



Catalog #: 2791

Aliases

TFPI; Tissue Factor Pathway Inhibitor; TFPI1; EPI; Extrinsic Pathway Inhibitor; LACI; TFI; Tissue Factor Pathway Inhibitor (Lipoprotein-Associated Coagulation Inhibitor); Lipoprotein-Associated Coagulation Inhibitor; Anti-Convertin

Background

Gene Name: TFPI

NCBI Gene Entry: [7035](#)

UniProt Entry: [P10646](#)

Application Information

Molecular Weight: Predicted, 35 kDa; observed, 35-45 kDa

Clonality: Rabbit monoclonal antibody

Clone ID: 24GB2605

Species Reactivity: Human

Applications Tested: Western blotting (WB), flow cytometry (FCM), immunocytochemistry (IC)

Immunogen

A synthesized peptide derived from human TFPI

Isotype

Rabbit IgG

Storage Buffer

Supplied in PBS (pH 7.4) containing 50% glycerol, and 0.02% sodium azide.

Storage

Store at -20 °C for one year.

Recommended Dilutions

Western Blotting (WB): 1:1,000-1:5,000

Flow Cytometry (FCM): 1:2,000

Immunocytochemistry (IC): 1:100-1:1,000

Note: This product is for research use only.

SUPPORT

SUPPORT@GENUINBIOTECH.COM
TEL: +1-540-855-7041

ORDERS

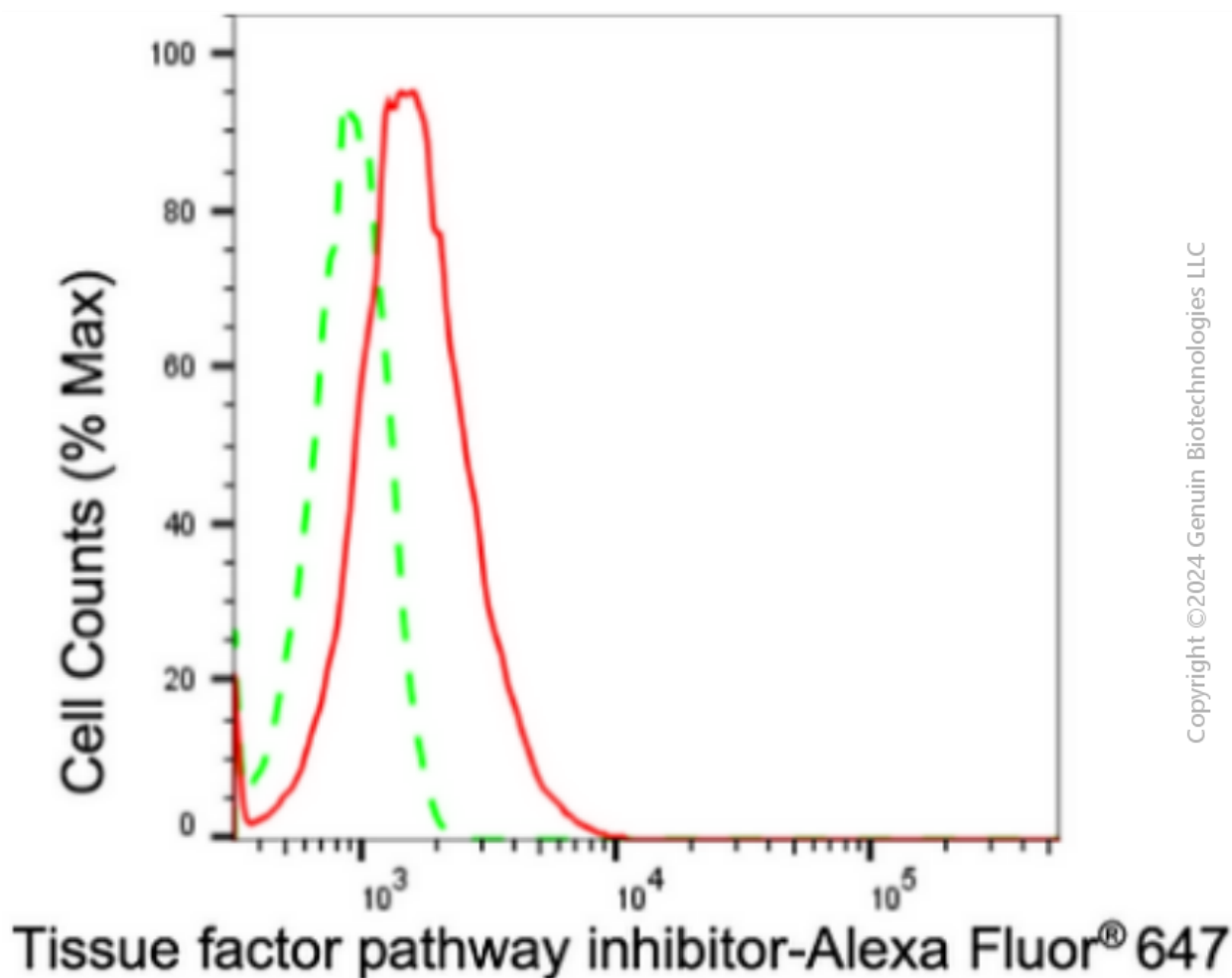
SALES@GENUINBIOTECH.COM
FAX: +1-540-855-7041

WWW.GENUINBIOTECH.COM

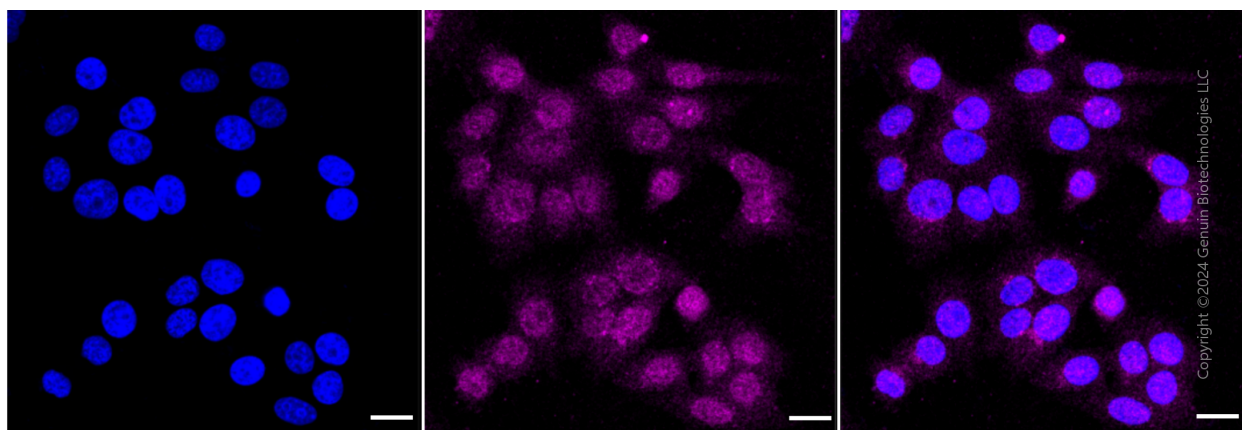
Anti-Tissue Factor Pathway Inhibitor Recombinant Rabbit Monoclonal Antibody

PAGE 2

Validation Data



Flow cytometric analysis of Tissue factor pathway inhibitor expression in HepG2 cells using anti-Tissue factor pathway inhibitor antibody (Cat#2791, 1:2,000). Green, isotype control; red, Tissue factor pathway inhibitor.



Immunocytochemical staining of HepG2 cells with anti-Tissue factor pathway inhibitor antibody

SUPPORT

SUPPORT@GENUINBIOTECH.COM
TEL: +1-540-855-7041

ORDERS

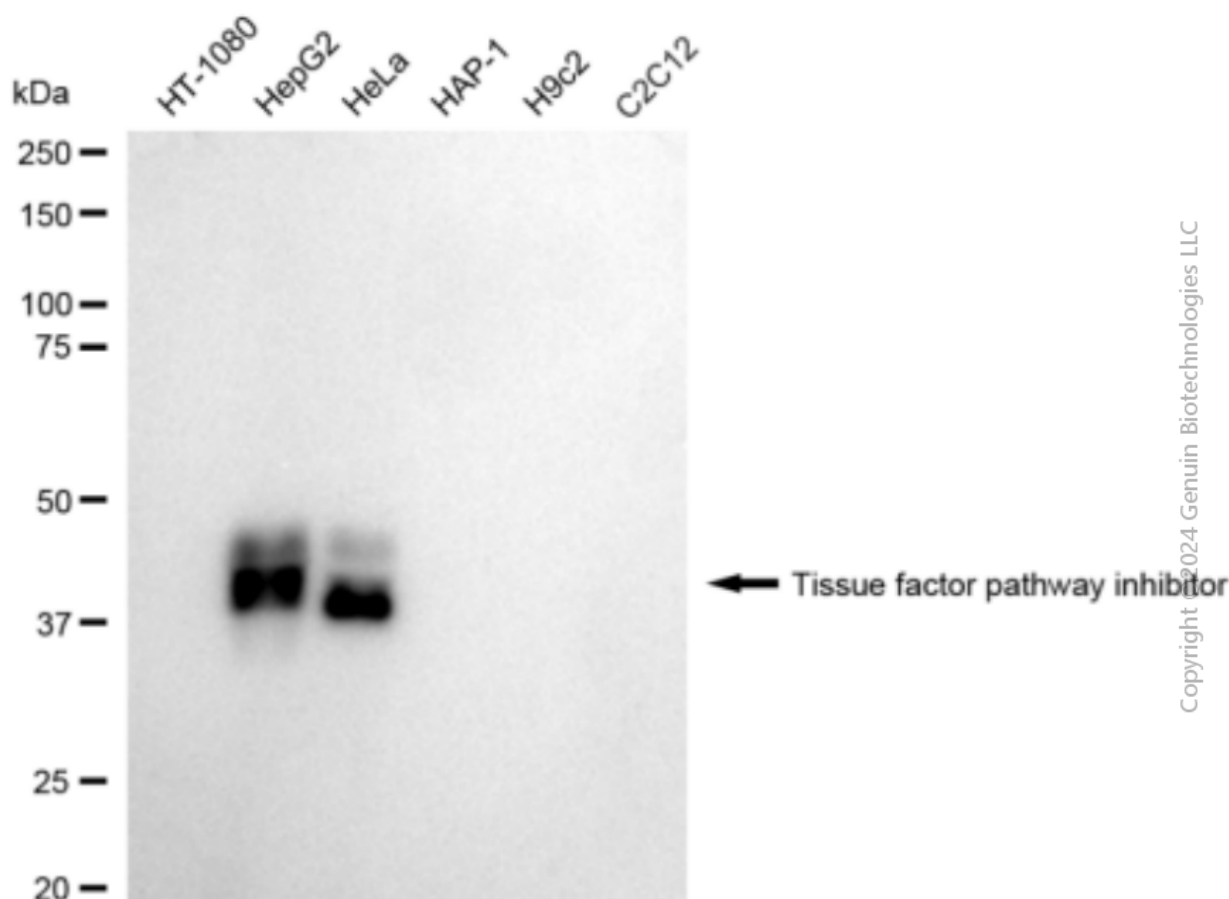
SALES@GENUINBIOTECH.COM
FAX: +1-540-855-7041

WWW.GENUINBIOTECH.COM

Anti-Tissue Factor Pathway Inhibitor Recombinant Rabbit Monoclonal Antibody

PAGE 3

(Cat#2791, 1:1,000). Nuclei were stained blue with DAPI; Tissue factor pathway inhibitor was stained magenta with Alexa Fluor® 647. Images were taken using Leica stellaris 5. Protein abundance based on laser Intensity and smart gain: Medium. Scale bar: 20 μ m.



Western blotting analysis using anti-Tissue factor pathway inhibitor antibody (Cat#2791). Total cell lysates (30 μ g) from various cell lines were loaded and separated by SDS-PAGE. The blot was incubated with anti-Tissue factor pathway inhibitor antibody (Cat#2791, 1:5,000) and HRP-conjugated goat anti-rabbit secondary antibody (Cat#201, 1:20,000) respectively. Image was developed using FeQ™ ECL Substrate Kit (Cat#226).

SUPPORT

SUPPORT@GENUINBIOTECH.COM
TEL: +1-540-855-7041

ORDERS

SALES@GENUINBIOTECH.COM
FAX: +1-540-855-7041

WWW.GENUINBIOTECH.COM