

# Anti-Syntaxin 3 Recombinant Rabbit Monoclonal Antibody



**Catalog #: 2792**

## Aliases

STX3; Syntaxin 3; STX3A; Syntaxin 3A; Syntaxin-3; Syntaxin 3B; DIAR12; RDMVID; MVID2

## Background

Gene Name: STX3

NCBI Gene Entry: [6809](#)

UniProt Entry: [Q13277](#)

## Application Information

Molecular Weight: Predicted, 33 kDa; observed, 33 kDa

Clonality: Rabbit monoclonal antibody

Clone ID: 24GB2615

Species Reactivity: Human, rat

Applications Tested: Western blotting (WB), flow cytometry (FCM), immunocytochemistry (IC)

## Immunogen

A synthesized peptide derived from human Syntaxin 3

## Isotype

Rabbit IgG

## Storage Buffer

Supplied in PBS (pH 7.4) containing 50% glycerol, and 0.02% sodium azide.

## Storage

Store at -20 °C for one year.

## Recommended Dilutions

Western Blotting (WB): 1:1,000-1:5,000

Flow Cytometry (FCM): 1:2,000

Immunocytochemistry (IC): 1:100-1:1,000

**Note:** This product is for research use only.

## Validation Data

---

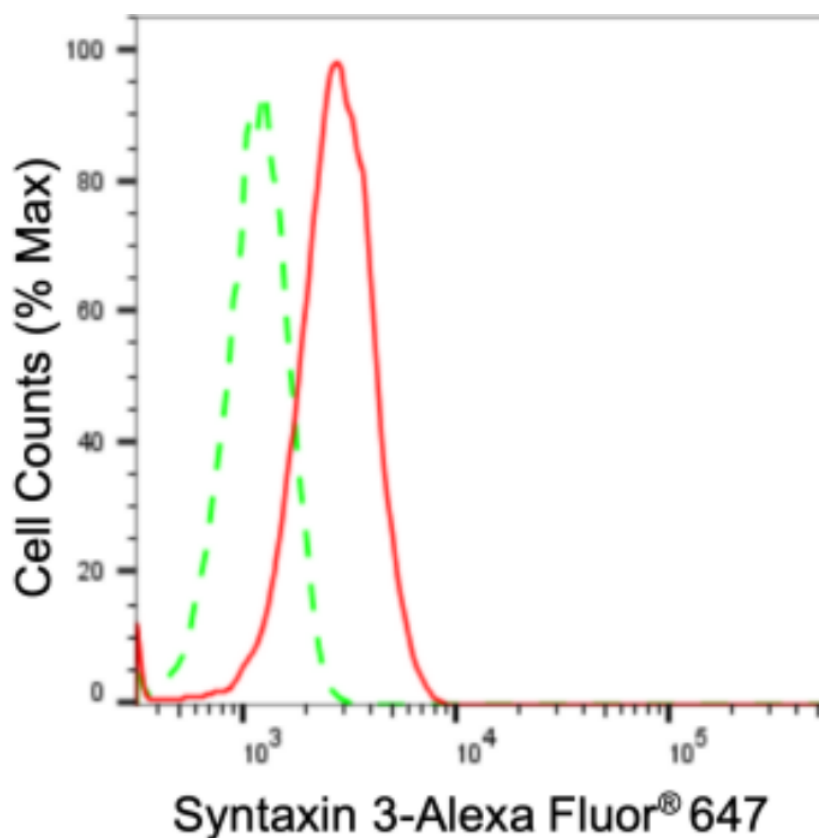
### SUPPORT

SUPPORT@GENUINBIOTECH.COM  
TEL: +1-540-855-7041

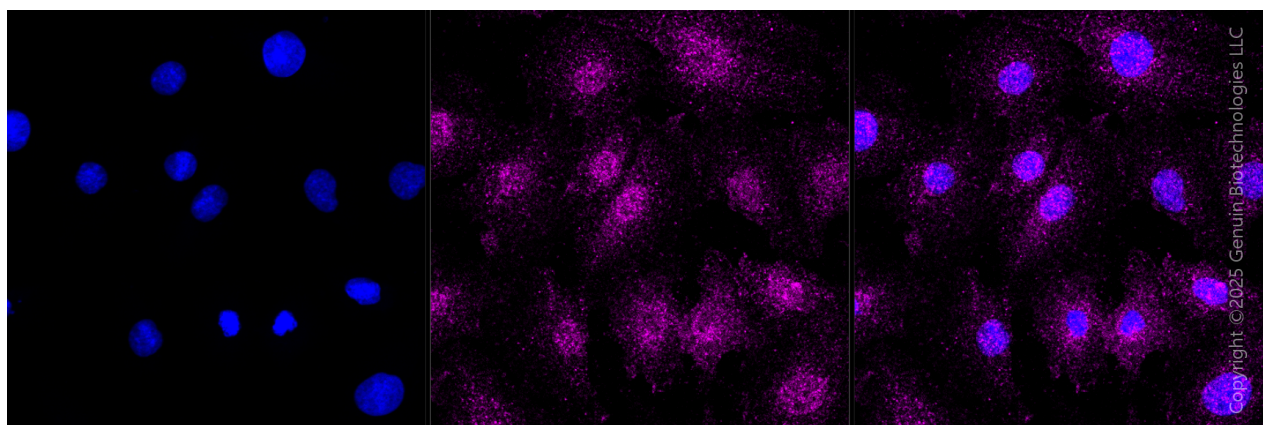
### ORDERS

SALES@GENUINBIOTECH.COM  
FAX: +1-540-855-7041

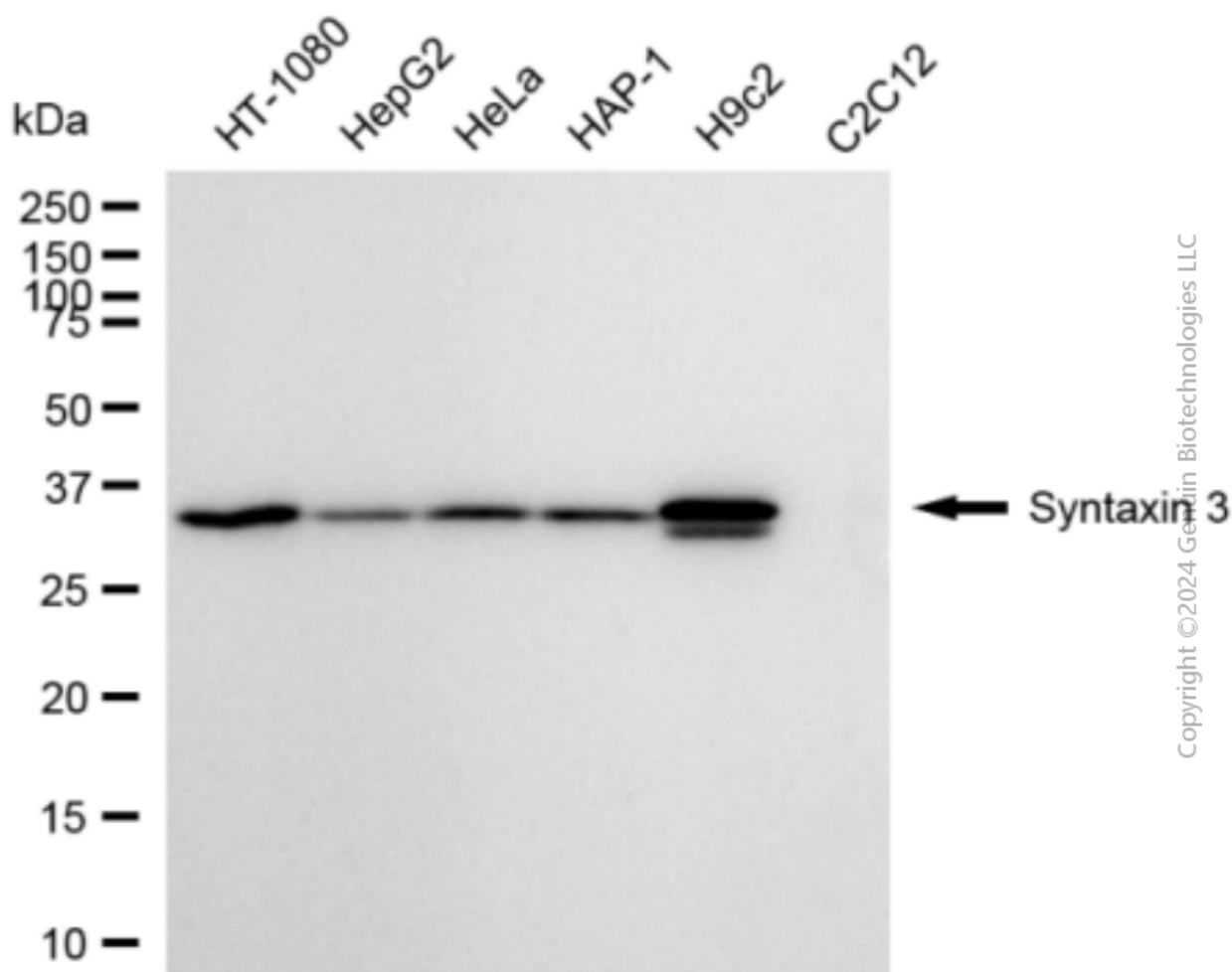
[WWW.GENUINBIOTECH.COM](http://WWW.GENUINBIOTECH.COM)



Flow cytometric analysis of Syntaxin 3 expression in HepG2 cells using anti-Syntaxin 3 antibody (Cat#2792, 1:2,000). Green, isotype control; red, Syntaxin 3.



Immunocytochemical staining of H9C2 cells with anti-Syntaxin 3 antibody (Cat#2792, 1:1,000). Nuclei were stained blue with DAPI; Syntaxin 3 was stained magenta with Alexa Fluor® 647. Images were taken using Leica stellaris 5. Protein abundance based on laser Intensity and smart gain: Medium. Scale bar, 20  $\mu$ m.



Western blotting analysis using anti-Syntaxin 3 antibody (Cat#2792). Total cell lysates (30 µg) from various cell lines were loaded and separated by SDS-PAGE. The blot was incubated with anti-Syntaxin 3 antibody (Cat#2792, 1:5,000) and HRP-conjugated goat anti-rabbit secondary antibody (Cat#201, 1:20,000) respectively. Image was developed using FeQ™ ECL Substrate Kit (Cat#226).