

Anti-Serine And Arginine Rich Splicing Factor 3 Recombinant Rabbit Monoclonal Antibody



Catalog #: 2796

Aliases

SRSF3; Serine And Arginine Rich Splicing Factor 3; Splicing Factor, Arginine/Serine-Rich 3; Serine/Arginine-Rich Splicing Factor 3; SRp20; SFRS3; Pre-mRNA-Splicing Factor SRP20; Splicing Factor, Arginine/Serine-Rich, 20-KD; Epididymis Secretory Sperm Binding Protein; Pre-mRNA Splicing Factor SRp20; SRP20

Background

Gene Name: SRSF3

NCBI Gene Entry: [6428](#)

UniProt Entry: [P84103](#)

Application Information

Molecular Weight: Predicted, 19 kDa; observed, 22 kDa

Clonality: Rabbit monoclonal antibody

Clone ID: 24GB2650

Species Reactivity: Human, mouse, rat

Applications Tested: Western blotting (WB), flow cytometry (FCM), immunocytochemistry (IC)

Immunogen

A synthesized peptide derived from human SRSF3

Isotype

Rabbit IgG

Storage Buffer

Supplied in PBS (pH 7.4) containing 50% glycerol, and 0.02% sodium azide.

Storage

Store at -20 °C for one year.

Recommended Dilutions

Western Blotting (WB): 1:1,000-1:5,000

Flow Cytometry (FCM): 1:2,000

Immunocytochemistry (IC): 1:100-1:1,000

SUPPORT

SUPPORT@GENUINBIOTECH.COM
TEL: +1-540-855-7041

ORDERS

SALES@GENUINBIOTECH.COM
FAX: +1-540-855-7041

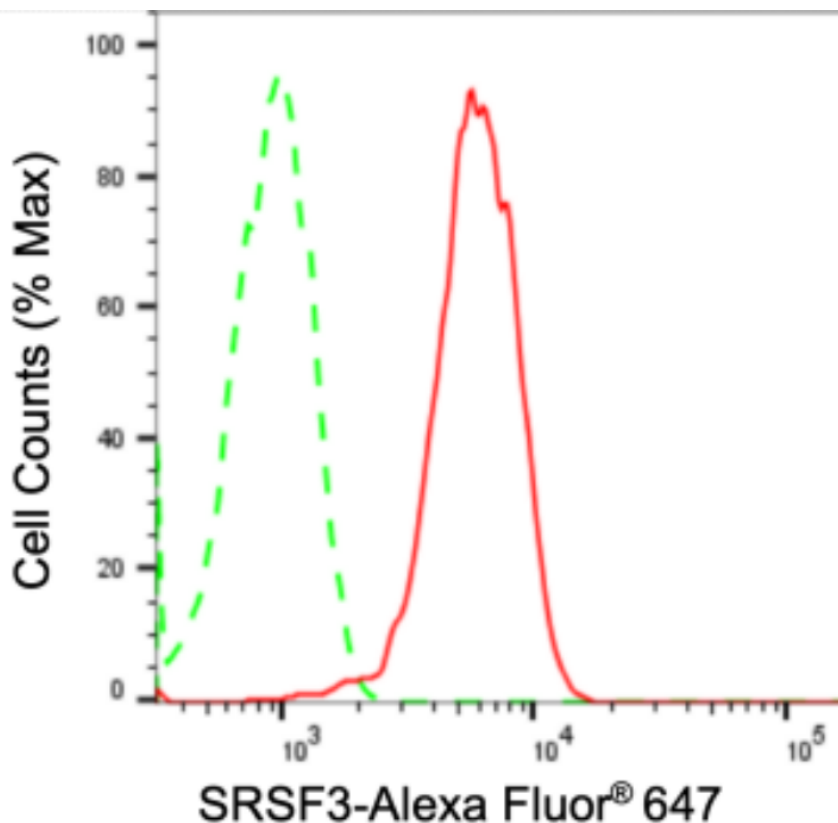
WWW.GENUINBIOTECH.COM

Anti-Serine And Arginine Rich Splicing Factor 3 Recombinant Rabbit Monoclonal Antibody

PAGE 2

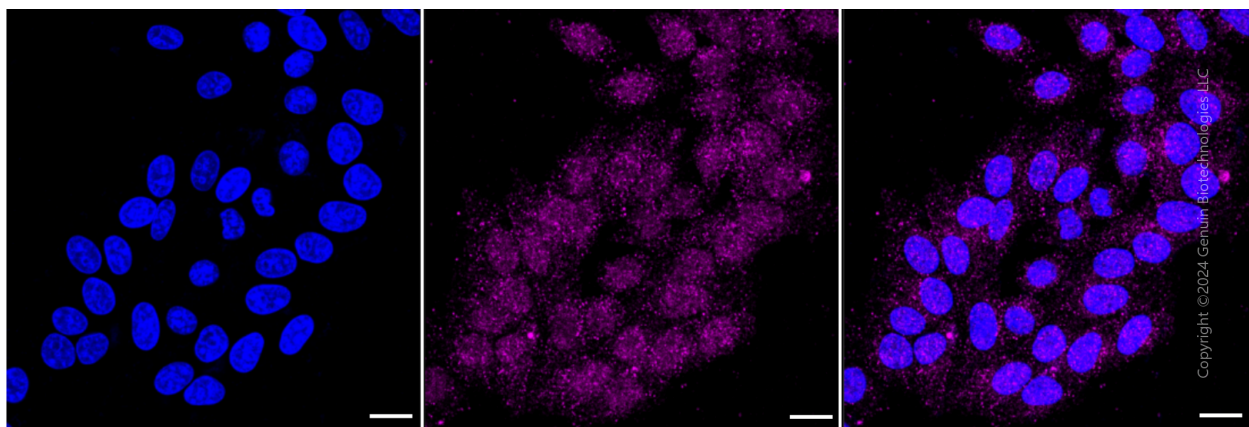
Note: This product is for research use only.

Validation Data



Copyright ©2024 Genuin Biotechnologies LLC

Flow cytometric analysis of SRSF3 expression in HepG2 cells using anti-SRSF3 antibody (Cat#2796, 1:2,000). Green, isotype control; red, SRSF3.



Copyright ©2024 Genuin Biotechnologies LLC

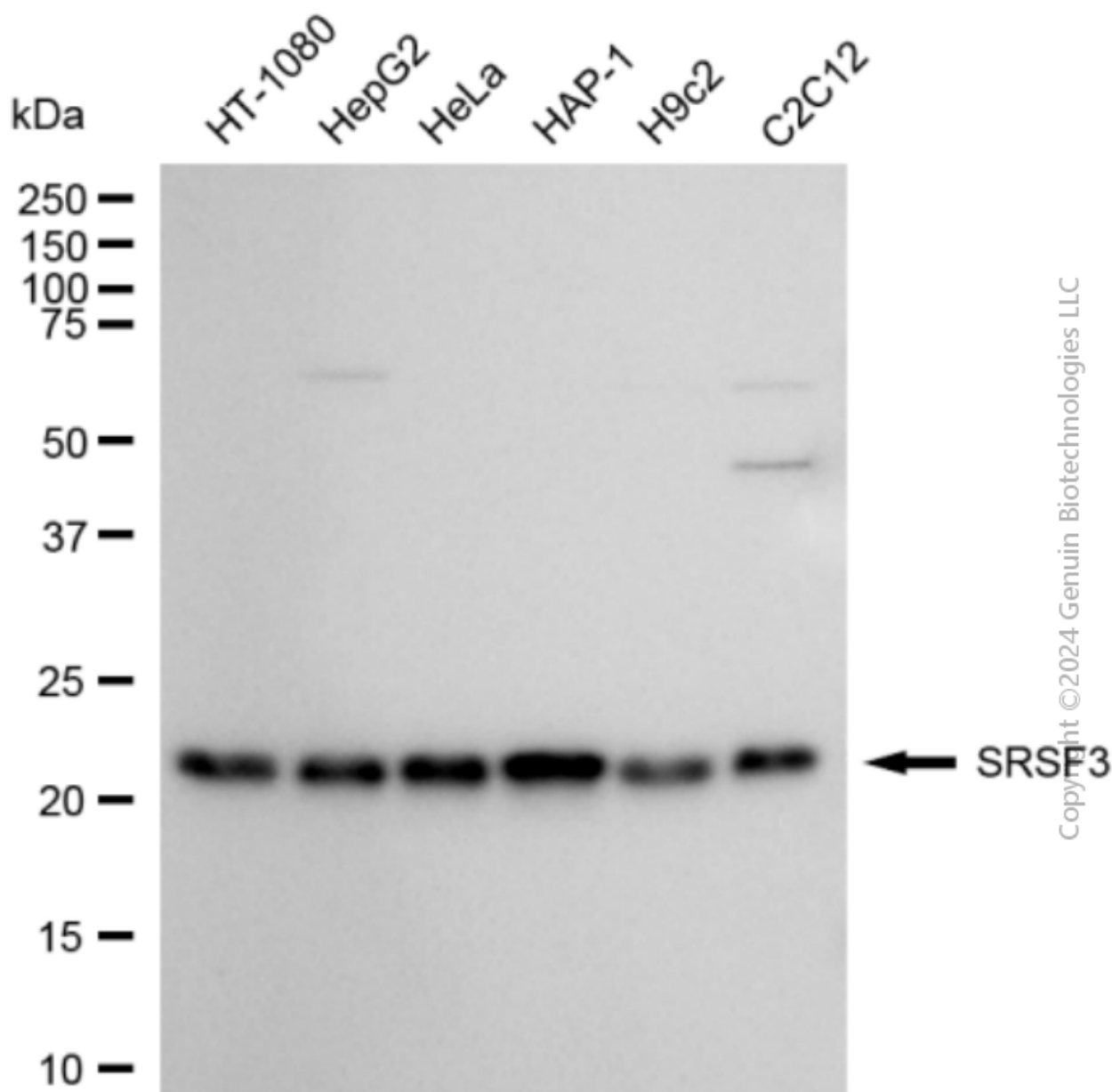
SUPPORT

SUPPORT@GENUINBIOTECH.COM
TEL: +1-540-855-7041

ORDERS

SALES@GENUINBIOTECH.COM
FAX: +1-540-855-7041

WWW.GENUINBIOTECH.COM



Western blotting analysis using anti-Vav1/2/3 antibody (Cat#2796). Total cell lysates (30 µg) from various cell lines were loaded and separated by SDS-PAGE. The blot was incubated with anti-Vav1/2/3 antibody (Cat#2796, 1:5,000) and HRP-conjugated goat anti-rabbit secondary antibody (Cat#201, 1:20,000) respectively. Image was developed using FeQ™ ECL Substrate Kit (Cat#226).