

# Anti-Tryptophanyl-TRNA Synthetase 1 Recombinant Rabbit Monoclonal Antibody



**Catalog #: 2797**

## Aliases

WARS1; Tryptophanyl-TRNA Synthetase 1; IFP53; IFI53; WARS; Tryptophan TRNA Ligase 1, Cytoplasmic; Tryptophan--TRNA Ligase, Cytoplasmic; Interferon-Induced Protein 53; Tryptophanyl-TRNA Synthetase; EC 6.1.1.2; TrpRS; HWRS; Epididymis Secretory Sperm Binding Protein; EC 6.1.1; GAMMA-2; NEDMSBA; HMND9; HMN9; WRS

## Background

Gene Name: WARS1

NCBI Gene Entry: [7453](#)

UniProt Entry: [P23381](#)

## Application Information

Molecular Weight: Predicted, 53 kDa; observed, 53 kDa

Clonality: Rabbit monoclonal antibody

Clone ID: 24GB2655

Species Reactivity: Human

Applications Tested: Western blotting (WB), flow cytometry (FCM), immunocytochemistry (IC)

## Immunogen

A synthesized peptide derived from human Tryptophanyl tRNA synthetase

## Isotype

Rabbit IgG

## Storage Buffer

Supplied in PBS (pH 7.4) containing 50% glycerol, and 0.02% sodium azide.

## Storage

Store at -20 °C for one year.

## Recommended Dilutions

Western Blotting (WB): 1:1,000-1:5,000

Flow Cytometry (FCM): 1:2,000

Immunocytochemistry (IC): 1:100-1:1,000

---

### SUPPORT

SUPPORT@GENUINBIOTECH.COM  
TEL: +1-540-855-7041

### ORDERS

SALES@GENUINBIOTECH.COM  
FAX: +1-540-855-7041

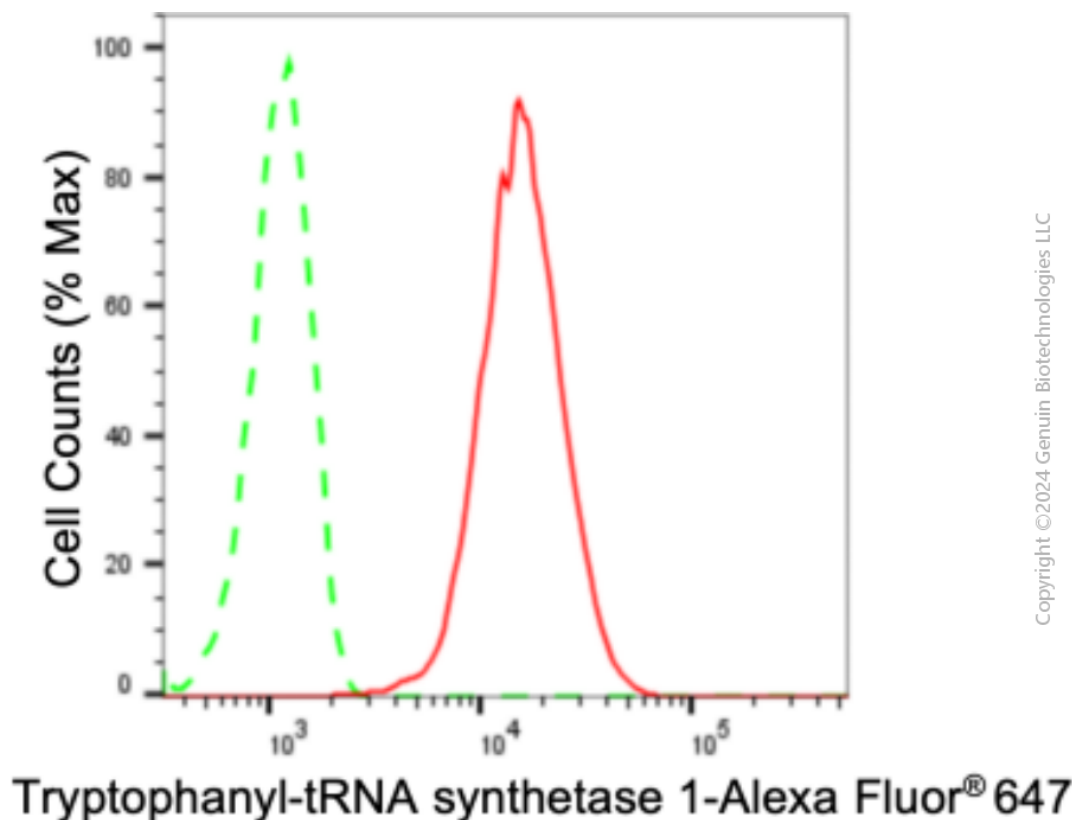
[WWW.GENUINBIOTECH.COM](http://WWW.GENUINBIOTECH.COM)

# Anti-Tryptophanyl-TRNA Synthetase 1 Recombinant Rabbit Monoclonal Antibody

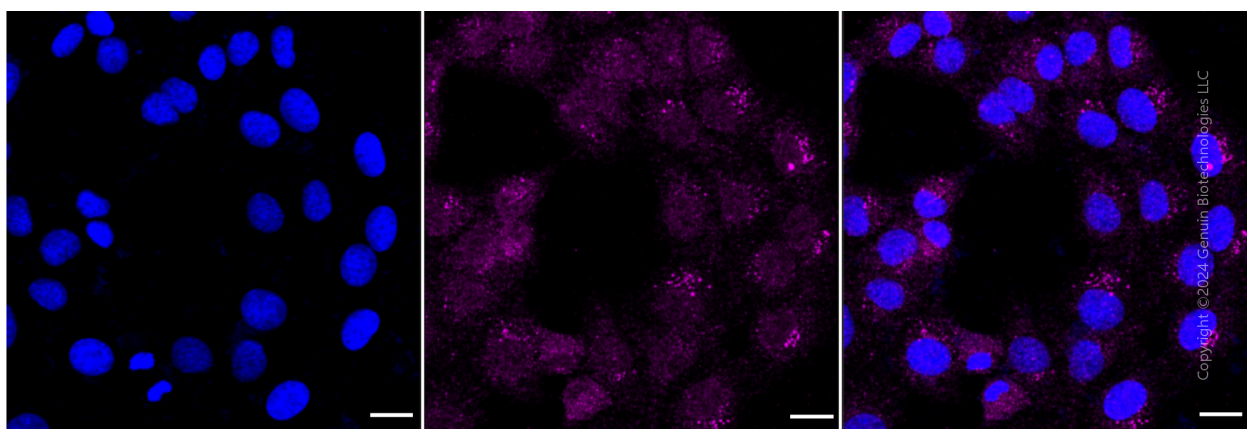
PAGE 2

**Note:** This product is for research use only.

## Validation Data



Flow cytometric analysis of Tryptophanyl-tRNA synthetase 1 expression in HT-1080 cells using anti-Tryptophanyl-tRNA synthetase 1 antibody (Cat#2797, 1:2,000). Green, isotype control; red, Tryptophanyl-tRNA synthetase 1.



Immunocytochemical staining of HT-1080 cells with anti-Tryptophanyl-tRNA synthetase 1 antibody (Cat#2797, 1:1,000). Nuclei were stained blue with DAPI; Tryptophanyl-tRNA synthetase 1 was stained magenta with Alexa Fluor® 647. Images were taken using Leica stellaris 5. Protein abundance based on laser Intensity and smart gain: Medium. Scale bar: 20  $\mu$ m.

### SUPPORT

SUPPORT@GENUINBIOTECH.COM  
TEL: +1-540-855-7041

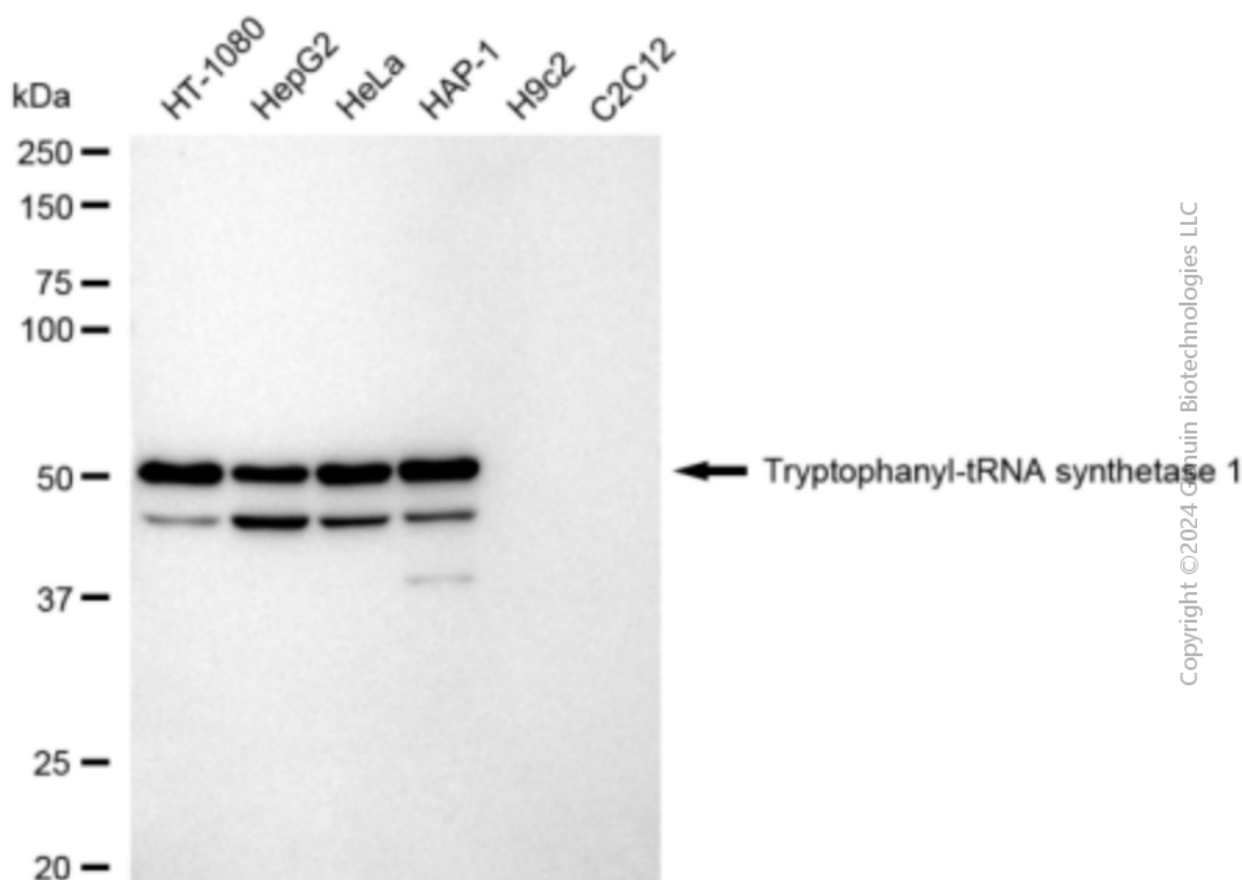
### ORDERS

SALES@GENUINBIOTECH.COM  
FAX: +1-540-855-7041

[WWW.GENUINBIOTECH.COM](http://WWW.GENUINBIOTECH.COM)

## Anti-Tryptophanyl-TRNA Synthetase 1 Recombinant Rabbit Monoclonal Antibody

PAGE 3



Western blotting analysis using anti-Tryptophanyl-tRNA synthetase 1 antibody (Cat#2797). Total cell lysates (30 µg) from various cell lines were loaded and separated by SDS-PAGE. The blot was incubated with anti-Tryptophanyl-tRNA synthetase 1 antibody (Cat#2797, 1:5,000) and HRP-conjugated goat anti-rabbit secondary antibody (Cat#201, 1:20,000) respectively. Image was developed using FeQ™ ECL Substrate Kit (Cat#226).

### SUPPORT

SUPPORT@GENUINBIOTECH.COM  
TEL: +1-540-855-7041

### ORDERS

SALES@GENUINBIOTECH.COM  
FAX: +1-540-855-7041

WWW.GENUINBIOTECH.COM