

Anti-WAPL Cohesin Release Factor Recombinant Rabbit Monoclonal Antibody



Catalog #: 2798

Aliases

WAPL; WAPL Cohesin Release Factor; KIAA0261; FOE; WAPAL; Wings Apart-Like Protein Homolog; Friend Of EBNA2 Protein; Friend Of EBNA2 (Epstein-Barr Virus Nuclear Protein 2); Wings Apart-Like Homolog (Drosophila); Friend Of EBNA2

Background

Gene Name: WAPL

NCBI Gene Entry: [23063](#)

UniProt Entry: [Q7Z5K2](#)

Application Information

Molecular Weight: Predicted, 133 kDa; observed, 160 kDa

Clonality: Rabbit monoclonal antibody

Clone ID: 24GB2675

Species Reactivity: Human, mouse, rat

Applications Tested: Western blotting (WB), flow cytometry (FCM), immunocytochemistry (IC)

Immunogen

A synthesized peptide derived from human WAPL

Isotype

Rabbit IgG

Storage Buffer

Supplied in PBS (pH 7.4) containing 50% glycerol, and 0.02% sodium azide.

Storage

Store at -20 °C for one year.

Recommended Dilutions

Western Blotting (WB): 1:1,000-1:5,000

Flow Cytometry (FCM): 1:2,000

Immunocytochemistry (IC): 1:100-1:1,000

Note: This product is for research use only.

SUPPORT

SUPPORT@GENUINBIOTECH.COM
TEL: +1-540-855-7041

ORDERS

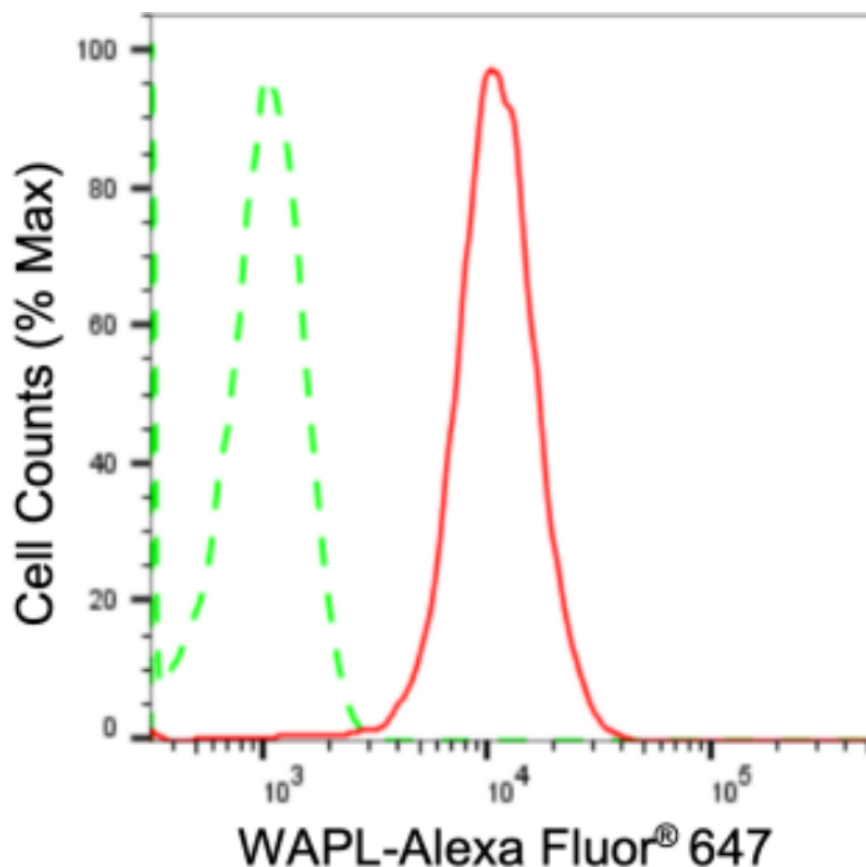
SALES@GENUINBIOTECH.COM
FAX: +1-540-855-7041

WWW.GENUINBIOTECH.COM

Anti-WAPL Cohesin Release Factor Recombinant Rabbit Monoclonal Antibody

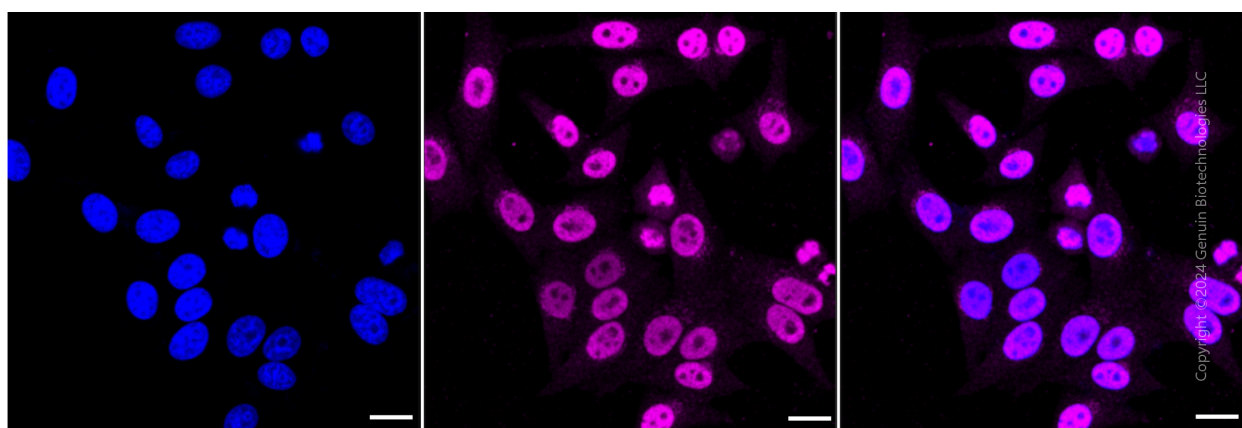
PAGE 2

Validation Data



Copyright ©2024 Genuin Biotechnologies LLC

Flow cytometric analysis of WAPL expression in HepG2 cells using anti-WAPL antibody (Cat#2798, 1:2,000). Green, isotype control; red, WAPL.



Copyright ©2024 Genuin Biotechnologies LLC

Immunocytochemical staining of HepG2 cells with anti-WAPL antibody (Cat#2798, 1:1,000). Nuclei were stained blue with DAPI; WAPL was stained magenta with Alexa Fluor® 647. Images were taken using Leica stellaris 5. Protein abundance based on laser Intensity and smart gain: High. Scale bar: 20 μ m.

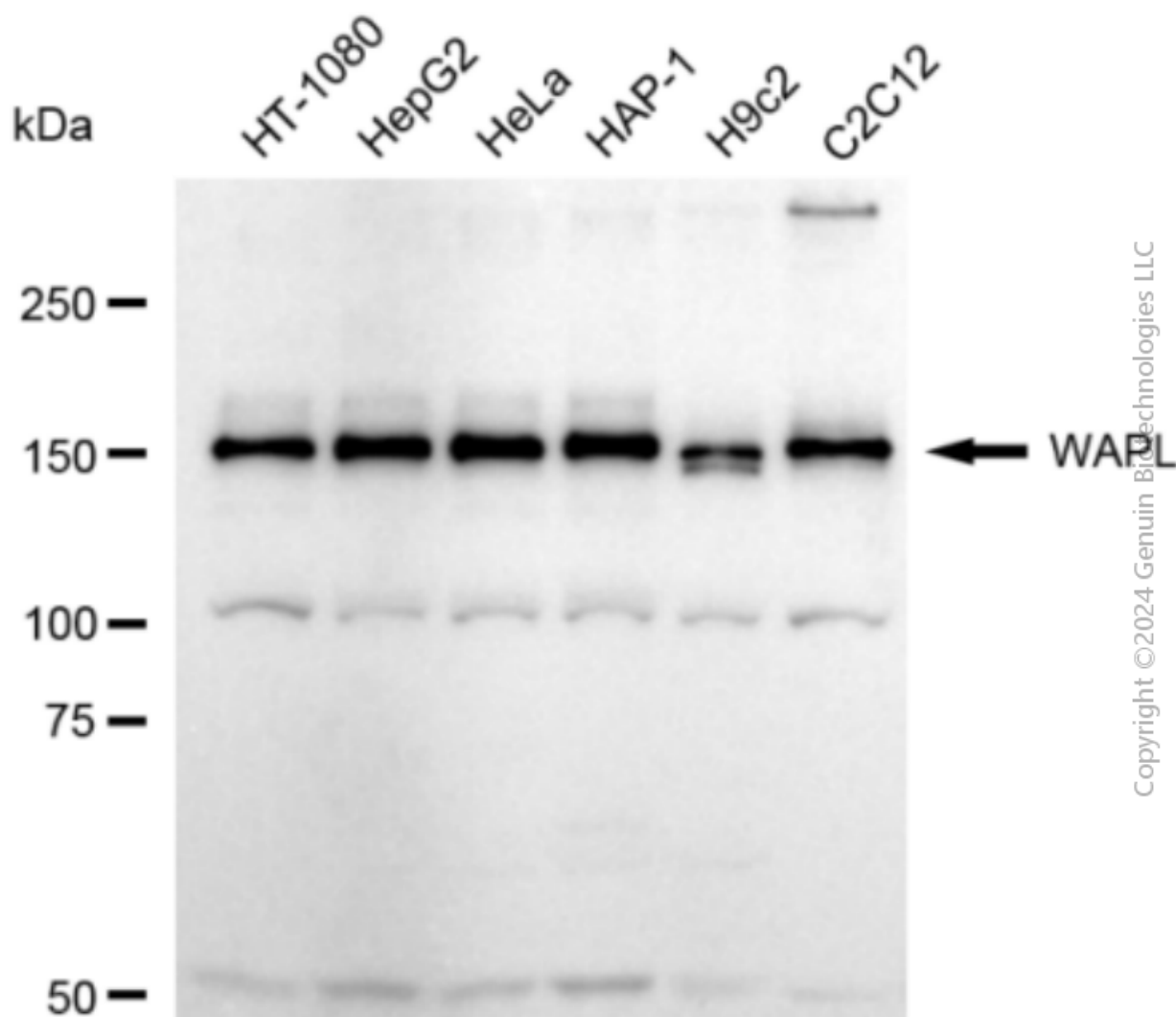
SUPPORT

SUPPORT@GENUINBIOTECH.COM
TEL: +1-540-855-7041

ORDERS

SALES@GENUINBIOTECH.COM
FAX: +1-540-855-7041

WWW.GENUINBIOTECH.COM



Copyright ©2024 Genuin Biotechnologies LLC

Western blotting analysis using anti-WAPL antibody (Cat#2798). Total cell lysates (30 µg) from various cell lines were loaded and separated by SDS-PAGE. The blot was incubated with anti-WAPL antibody (Cat#2798, 1:5,000) and HRP-conjugated goat anti-rabbit secondary antibody (Cat#201, 1:20,000) respectively. Image was developed using FeQ™ ECL Substrate Kit (Cat#226).