

# Anti-TAB3 Recombinant Rabbit Monoclonal Antibody



**Catalog #: 2799**

## Aliases

TAB3; TGF-Beta Activated Kinase 1 (MAP3K7) Binding Protein 3; MAP3K7IP3; Mitogen-Activated Protein Kinase Kinase Kinase 7 Interacting Protein 3; TGF-Beta Activated Kinase 1 And MAP3K7 Binding Protein 3; TGF-Beta-Activated Kinase 1 And MAP3K7-Binding Protein 3; TGF-Beta-Activated Kinase 1-Binding Protein 3; NF-Kappa-B-Activating Protein 1; TAK1-Binding Protein 3; TAB-3; Mitogen-Activated Protein Kinase Kinase Kinase 7-Interacting Protein; TGF-Beta Activated Kinase 1/MAP3K7 Binding Protein 3; NFkB Activating Protein 1; TAK1 Binding Protein 3; NAP1

## Background

Gene Name: TAB3

NCBI Gene Entry: [257397](#)

UniProt Entry: [Q8N5C8](#)

## Application Information

Molecular Weight: Predicted, 79 kDa; observed, 90 kDa

Clonality: Rabbit monoclonal antibody

Clone ID: 24GB2680

Species Reactivity: Human, mouse

Applications Tested: Western blotting (WB), flow cytometry (FCM), immunocytochemistry (IC)

## Immunogen

A synthesized peptide derived from human TAB3

## Isotype

Rabbit IgG

## Storage Buffer

Supplied in PBS (pH 7.4) containing 50% glycerol, and 0.02% sodium azide.

## Storage

Store at -20 °C for one year.

## Recommended Dilutions

Western Blotting (WB): 1:1,000-1:5,000

Flow Cytometry (FCM): 1:2,000

---

### SUPPORT

SUPPORT@GENUINBIOTECH.COM  
TEL: +1-540-855-7041

### ORDERS

SALES@GENUINBIOTECH.COM  
FAX: +1-540-855-7041

[WWW.GENUINBIOTECH.COM](http://WWW.GENUINBIOTECH.COM)

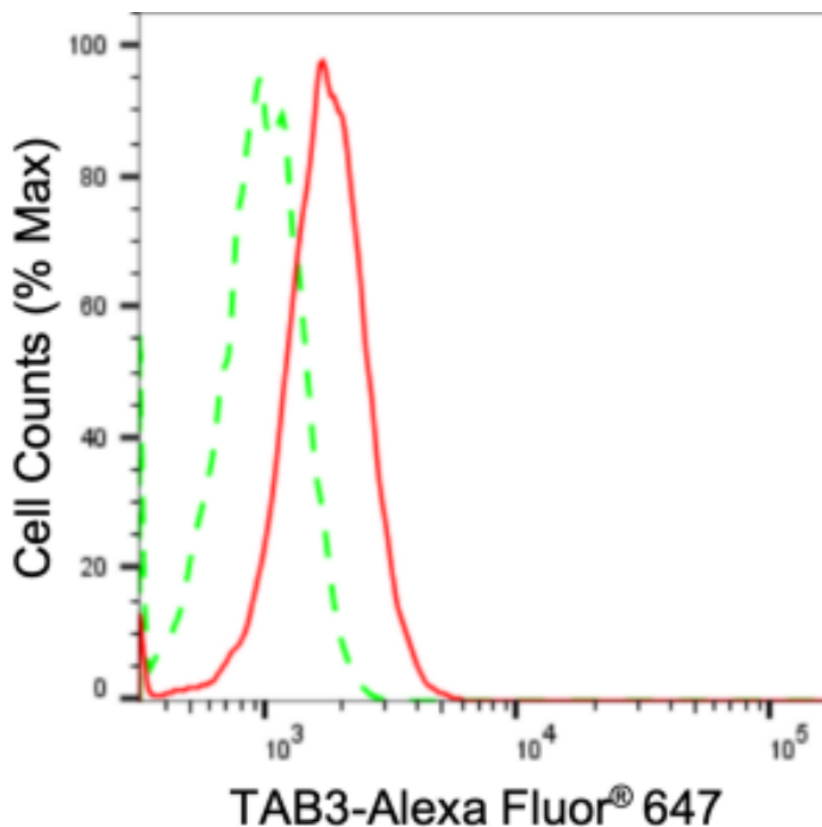
# Anti-TAB3 Recombinant Rabbit Monoclonal Antibody

PAGE 2

Immunocytochemistry (IC): 1:100-1:1,000

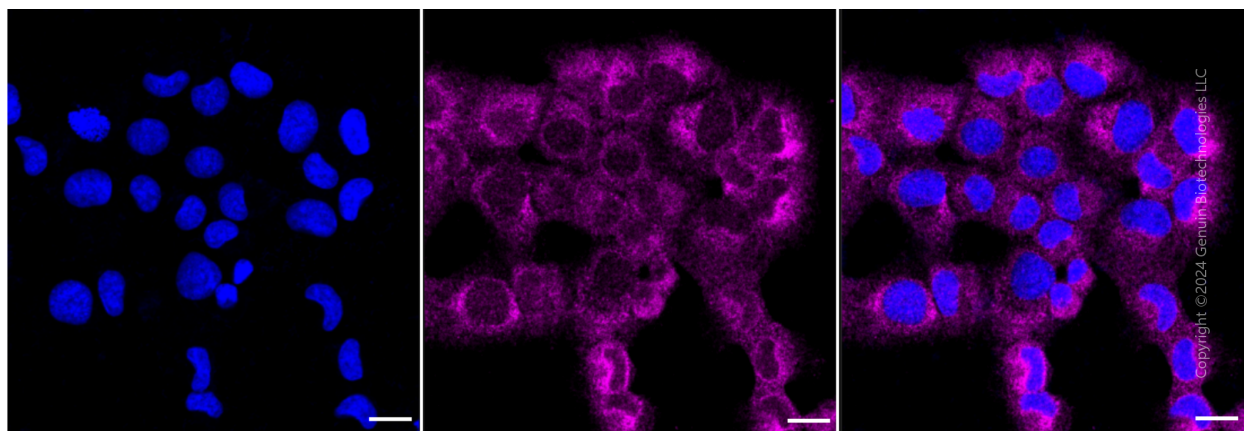
**Note:** This product is for research use only.

## Validation Data



Copyright ©2024 Genuin Biotechnologies LLC

Flow cytometric analysis of TAB3 expression in HT-1080 cells using anti-TAB3 antibody (Cat#2799, 1:2,000). Green, isotype control; red, TAB3.



Copyright ©2024 Genuin Biotechnologies LLC

### SUPPORT

SUPPORT@GENUINBIOTECH.COM  
TEL: +1-540-855-7041

### ORDERS

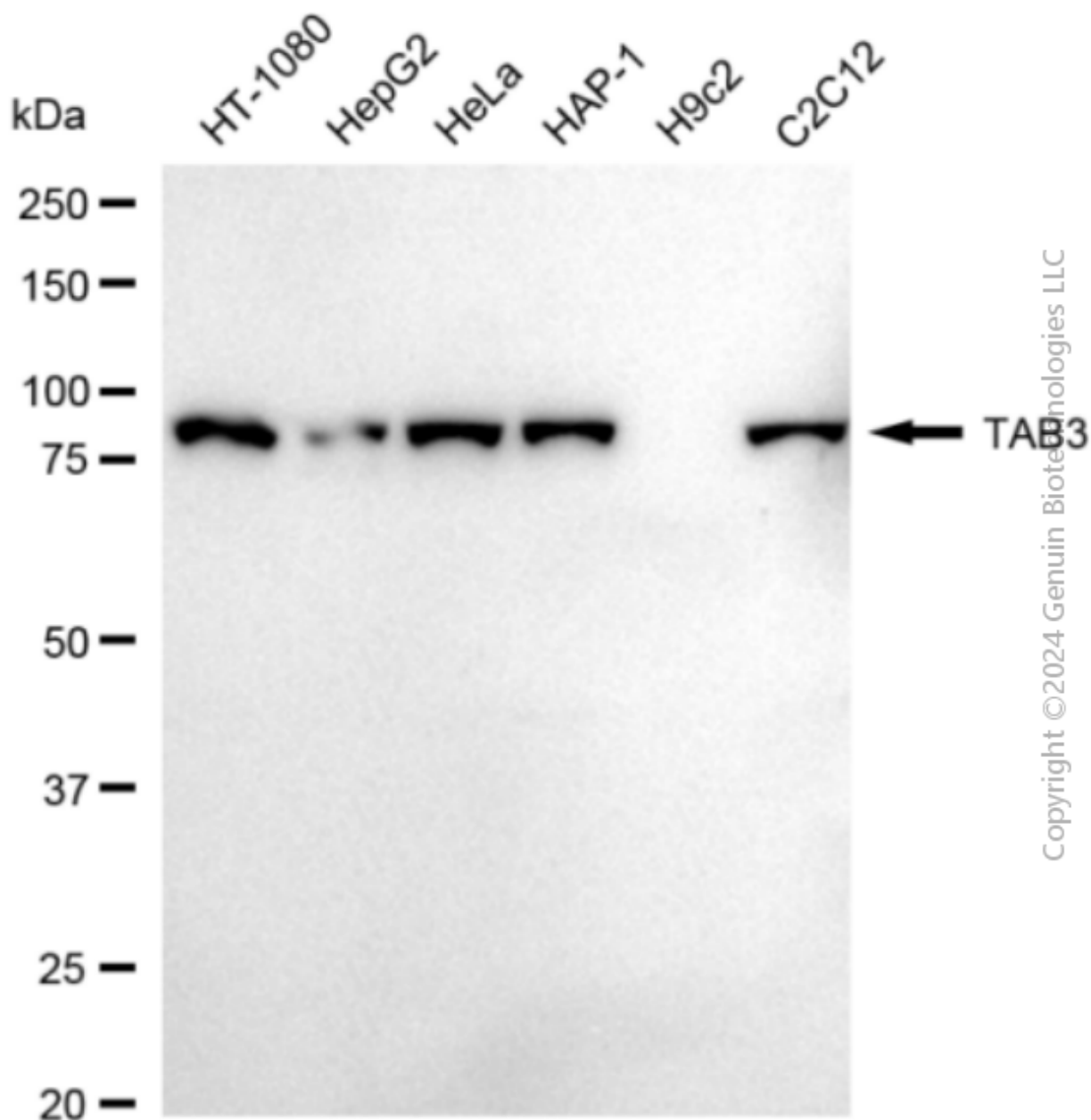
SALES@GENUINBIOTECH.COM  
FAX: +1-540-855-7041

WWW.GENUINBIOTECH.COM

## Anti-TAB3 Recombinant Rabbit Monoclonal Antibody

PAGE 3

were taken using Leica stellaris 5. Protein abundance based on laser Intensity and smart gain: Medium. Scale bar: 20  $\mu$ m.



Western blotting analysis using anti-TAB3 antibody (Cat#2799). Total cell lysates (30  $\mu$ g) from various cell lines were loaded and separated by SDS-PAGE. The blot was incubated with anti-TAB3 antibody (Cat#2799, 1:5,000) and HRP-conjugated goat anti-rabbit secondary antibody (Cat#201, 1:20,000) respectively. Image was developed using FeQ™ ECL Substrate Kit (Cat#226).

### SUPPORT

SUPPORT@GENUINBIOTECH.COM  
TEL: +1-540-855-7041

### ORDERS

SALES@GENUINBIOTECH.COM  
FAX: +1-540-855-7041

[WWW.GENUINBIOTECH.COM](http://WWW.GENUINBIOTECH.COM)