

# Anti-Thioredoxin Domain Containing 12 Recombinant Rabbit Monoclonal Antibody



**Catalog #: 2801**

## Aliases

TXNDC12; Thioredoxin Domain Containing 12; TLP19; PDIA16; ERP18; ERP19; HAG-1; AGR1; Endoplasmic Reticulum Thioredoxin Superfamily Member, 18 kDa; Thioredoxin Domain Containing 12 (Endoplasmic Reticulum); Protein Disulfide Isomerase Family A, Member 16; Endoplasmic Reticulum Resident Protein 18; Endoplasmic Reticulum Resident Protein 19; Thioredoxin Domain-Containing Protein 12; Thioredoxin-Like Protein P19; ER Protein 18; ER Protein 19; HTLP19; Anterior Gradient Homolog 1 (Xenopus Laevis); Endoplasmic Reticulum Protein ERp19; Anterior Gradient Homolog 1; EC 1.8.4.2; ERP16; ERp18; ERp19; AG1

## Background

Gene Name: TXNDC12

NCBI Gene Entry: [51060](#)

UniProt Entry: [O95881](#)

## Application Information

Molecular Weight: Predicted, 19 kDa; observed, 17 kDa

Clonality: Rabbit monoclonal antibody

Clone ID: 24GB1835

Species Reactivity: Human, mouse, rat

Applications Tested: Western blotting (WB), flow cytometry (FCM), immunocytochemistry (IC)

## Immunogen

A synthesized peptide derived from human ERp19

## Isotype

Rabbit IgG

## Storage Buffer

Supplied in PBS (pH 7.4) containing 50% glycerol, and 0.02% sodium azide.

## Storage

Store at -20 °C for one year.

## Recommended Dilutions

Western Blotting (WB): 1:1,000-1:5,000

Flow Cytometry (FCM): 1:2,000

---

### SUPPORT

SUPPORT@GENUINBIOTECH.COM  
TEL: +1-540-855-7041

### ORDERS

SALES@GENUINBIOTECH.COM  
FAX: +1-540-855-7041

[WWW.GENUINBIOTECH.COM](http://WWW.GENUINBIOTECH.COM)

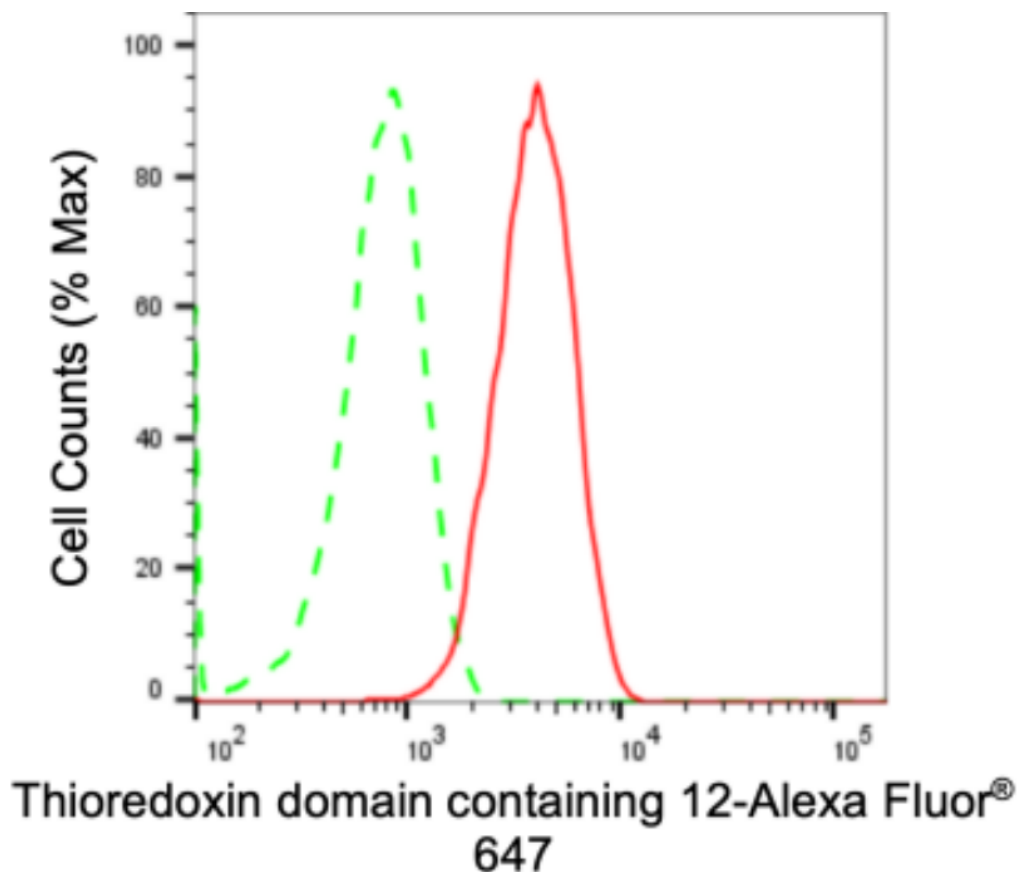
# Anti-Thioredoxin Domain Containing 12 Recombinant Rabbit Monoclonal Antibody

PAGE 2

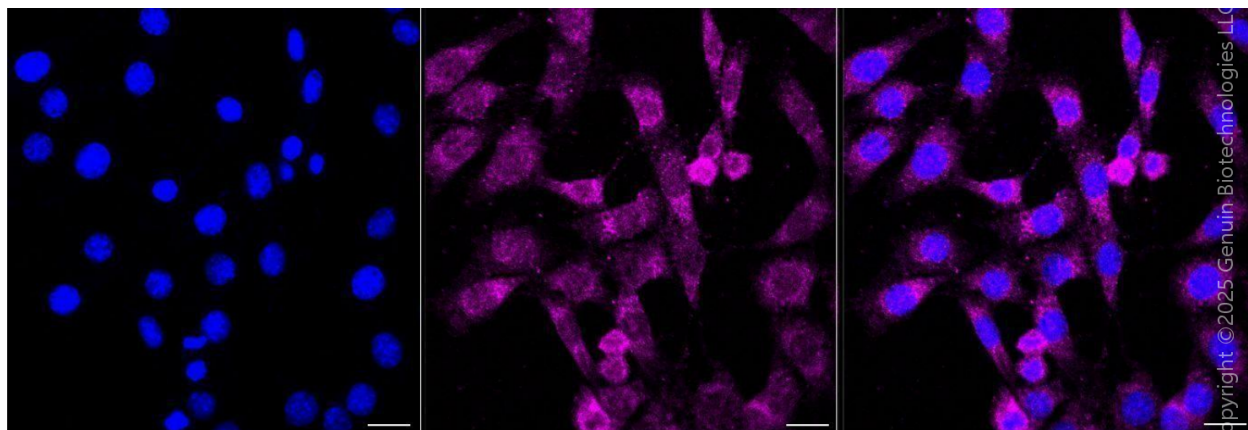
Immunocytochemistry (IC): 1:100-1:1,000

**Note:** This product is for research use only.

## Validation Data



Flow cytometric analysis of Thioredoxin domain containing 12 expression in C2C12 cells using anti-Thioredoxin domain containing 12 antibody (Cat#2801, 1:2,000). Green, isotype control; red, Thioredoxin domain containing 12.



### SUPPORT

SUPPORT@GENUINBIOTECH.COM  
TEL: +1-540-855-7041

### ORDERS

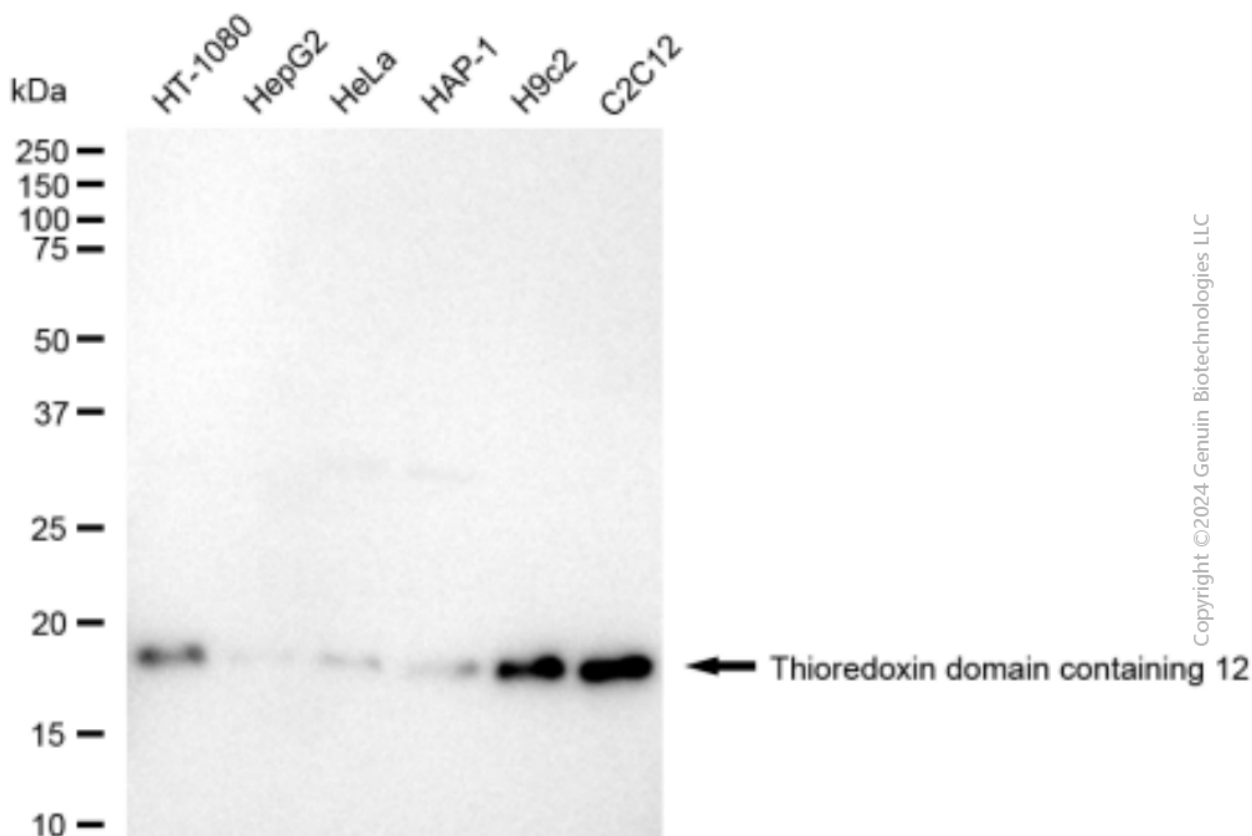
SALES@GENUINBIOTECH.COM  
FAX: +1-540-855-7041

WWW.GENUINBIOTECH.COM

## Anti-Thioredoxin Domain Containing 12 Recombinant Rabbit Monoclonal Antibody

PAGE 3

Immunocytochemical staining of C2C12 cells with anti-Thioredoxin domain containing 12 antibody (Cat#2801, 1:1,000). Nuclei were stained blue with DAPI; Thioredoxin domain containing 12 was stained magenta with Alexa Fluor® 647. Images were taken using Leica stellaris 5. Protein abundance based on laser Intensity and smart gain: Medium. Scale bar, 20  $\mu$ m.



Western blotting analysis using anti-thioredoxin domain containing 12 antibody (Cat#2801). Total cell lysates (30  $\mu$ g) from various cell lines were loaded and separated by SDS-PAGE. The blot was incubated with anti-thioredoxin domain containing 12 antibody (Cat#2801, 1:5,000) and HRP-conjugated goat anti-rabbit secondary antibody (Cat#201, 1:20,000) respectively. Image was developed using FeQ™ ECL Substrate Kit (Cat#226).

### SUPPORT

SUPPORT@GENUINBIOTECH.COM  
TEL: +1-540-855-7041

### ORDERS

SALES@GENUINBIOTECH.COM  
FAX: +1-540-855-7041

WWW.GENUINBIOTECH.COM