

Anti-X-Ray Repair Cross Complementing 5 Recombinant Rabbit Monoclonal Antibody



Catalog #: 2807

Aliases

XRCC5; X-Ray Repair Cross Complementing 5; Ku86; KARP-1; KU80; KUB2; X-Ray Repair Complementing Defective Repair In Chinese Hamster Cells 5 (Double-Strand-Break Rejoining); ATP-Dependent DNA Helicase II 80 KDa Subunit; X-Ray Repair Cross-Complementing Protein 5; ATP-Dependent DNA Helicase 2 Subunit; CTC Box-Binding Factor 85 KDa Subunit; Lupus Ku Autoantigen Protein P86; 86 KDa Subunit Of Ku Antigen; Thyroid-Lupus Autoantigen; DNA Repair Protein XRCC5; Ku Autoantigen, 80kDa; Nuclear Factor IV; CTC85; CTCBF; TLAA; X-Ray Repair Complementing Defective Repair In Chinese Hamster Cells 5 (Double-Strand-Break Rejoining; Ku Autoantigen, 80kD); Ku86 Autoantigen Related Protein 1; EC 3.6.4.-; KARP1; G22P2; NFIV; Ku80

Background

Gene Name: XRCC5

NCBI Gene Entry: [7520](#)

UniProt Entry: [P13010](#)

Application Information

Molecular Weight: Predicted, 83 kDa; observed, 83 kDa

Clonality: Rabbit monoclonal antibody

Clone ID: 24GB2045

Species Reactivity: Human

Applications Tested: Western blotting (WB), flow cytometry (FCM), immunocytochemistry (IC)

Immunogen

A synthesized peptide derived from human Ku80

Isotype

Rabbit IgG

Storage Buffer

Supplied in PBS (pH 7.4) containing 50% glycerol, and 0.02% sodium azide.

Storage

Store at -20 °C for one year.

Recommended Dilutions

SUPPORT

SUPPORT@GENUINBIOTECH.COM
TEL: +1-540-855-7041

ORDERS

SALES@GENUINBIOTECH.COM
FAX: +1-540-855-7041

WWW.GENUINBIOTECH.COM

Anti-X-Ray Repair Cross Complementing 5 Recombinant Rabbit Monoclonal Antibody

PAGE 2

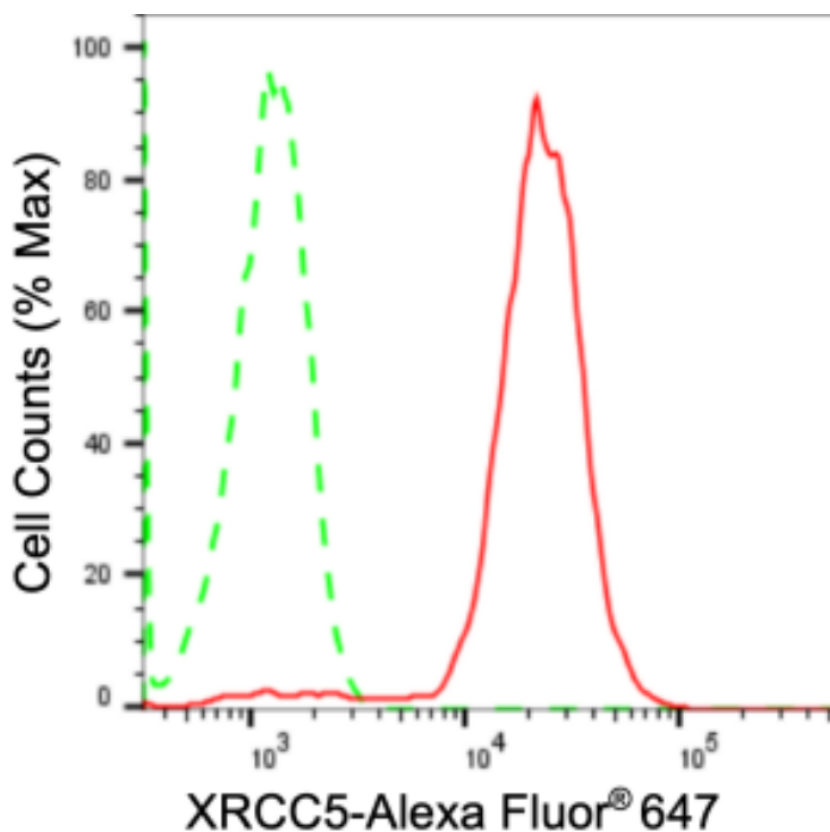
Western Blotting (WB): 1:2,000-1:10,000

Flow Cytometry (FCM): 1:2,000

Immunocytochemistry (IC): 1:100-1:1,000

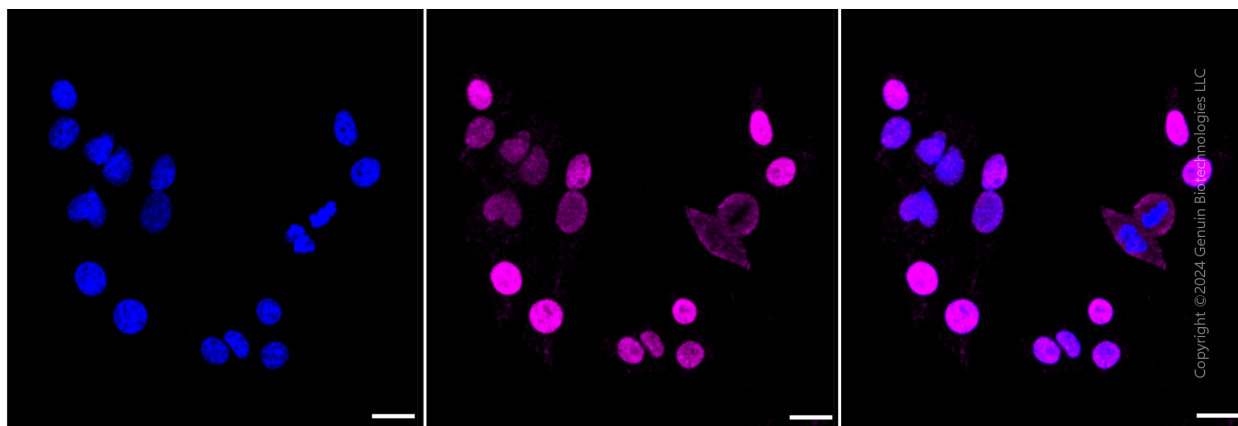
Note: This product is for research use only.

Validation Data



Copyright ©2024 Genuin Biotechnologies LLC

Flow cytometric analysis of XRCC5 expression in HepG2 cells using anti-XRCC5 antibody (Cat#2807, 1:2,000). Green, isotype control; red, XRCC5.



Copyright ©2024 Genuin Biotechnologies LLC

SUPPORT

SUPPORT@GENUINBIOTECH.COM
TEL: +1-540-855-7041

ORDERS

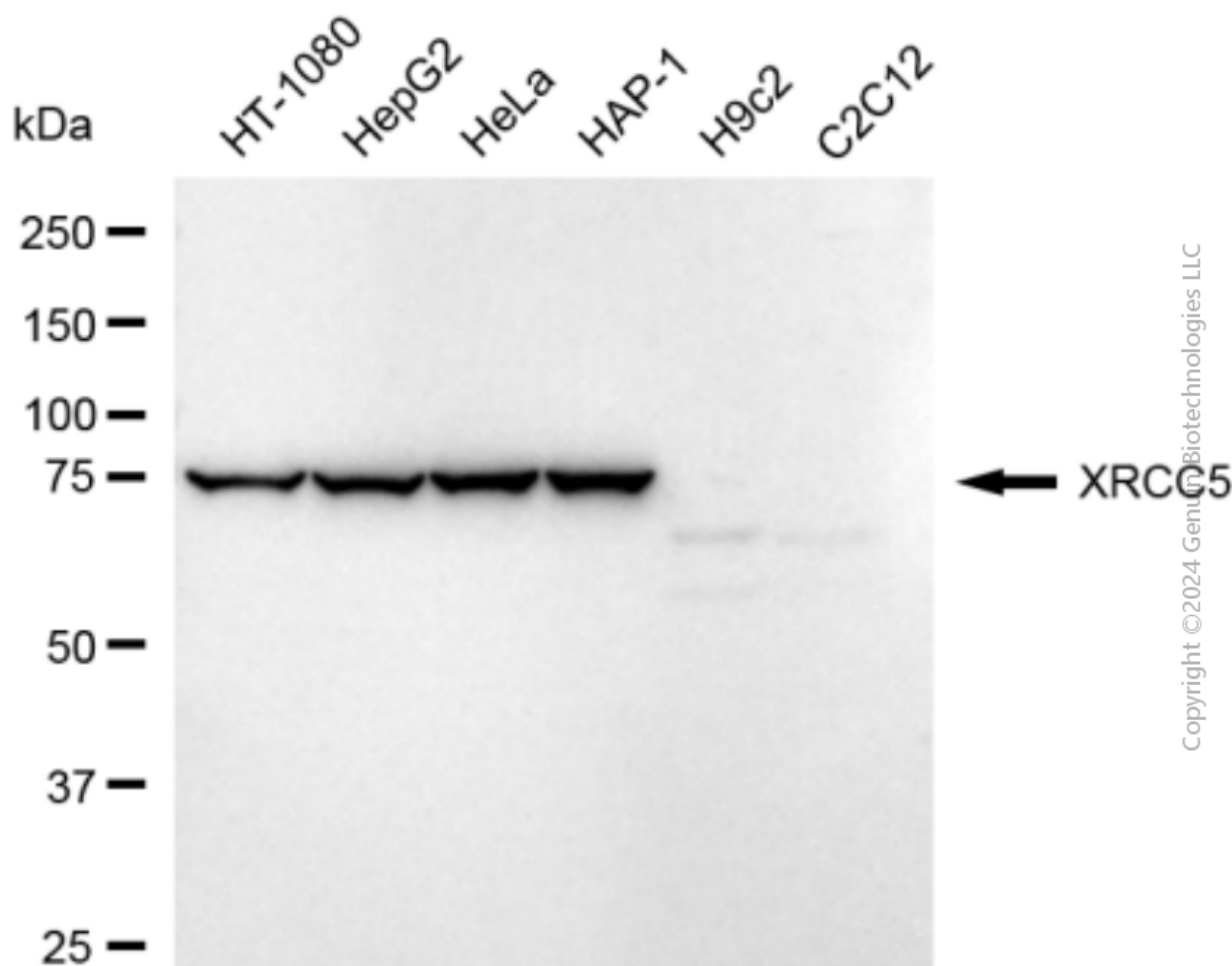
SALES@GENUINBIOTECH.COM
FAX: +1-540-855-7041

WWW.GENUINBIOTECH.COM

Anti-X-Ray Repair Cross Complementing 5 Recombinant Rabbit Monoclonal Antibody

PAGE 3

Immunocytochemical staining of HepG2 cells with anti-XRCC5 antibody (Cat#2807, 1:1,000). Nuclei were stained blue with DAPI; XRCC5 was stained magenta with Alexa Fluor® 647. Images were taken using Leica stellaris 5. Protein abundance based on laser Intensity and smart gain: Medium. Scale bar: 20 μ m.



Western blotting analysis using anti-XRCC5 antibody (Cat#2807). Total cell lysates (30 μ g) from various cell lines were loaded and separated by SDS-PAGE. The blot was incubated with anti-XRCC5 antibody (Cat#2807, 1:10,000) and HRP-conjugated goat anti-rabbit secondary antibody (Cat#201, 1:20,000) respectively. Image was developed using FeQ™ ECL Substrate Kit (Cat#226).

SUPPORT

SUPPORT@GENUINBIOTECH.COM
TEL: +1-540-855-7041

ORDERS

SALES@GENUINBIOTECH.COM
FAX: +1-540-855-7041

WWW.GENUINBIOTECH.COM