

Anti-Solute Carrier Family 1 Member 2 Recombinant Rabbit Monoclonal Antibody



Catalog #: 2808

Aliases

SLC1A2; Solute Carrier Family 1 Member 2; EAAT2; GLT1; Excitatory Amino Acid Transporter 2; GLT-1; HBGT; Solute Carrier Family 1 (Glial High Affinity Glutamate Transporter), Member 2; Sodium-Dependent Glutamate/Aspartate Transporter 2; Glutamate/Aspartate Transporter II; Human Brain Glutamate Transporter; Glutamate Transporter-1; Excitotoxic Amino Acid Transporter 2; EIEE41; DEE41

Background

Gene Name: SLC1A2

NCBI Gene Entry: [6506](#)

UniProt Entry: [P43004](#)

Application Information

Molecular Weight: Predicted, 62 kDa; observed, 62 kDa

Clonality: Rabbit monoclonal antibody

Clone ID: 24GB2185

Species Reactivity: Human, mouse, rat

Applications Tested: Western blotting (WB), flow cytometry (FCM), immunocytochemistry (IC)

Immunogen

A synthesized peptide derived from human EAAT2

Isotype

Rabbit IgG

Storage Buffer

Supplied in PBS (pH 7.4) containing 50% glycerol, and 0.02% sodium azide.

Storage

Store at -20 °C for one year.

Recommended Dilutions

Western Blotting (WB): 1:1,000-1:5,000

Flow Cytometry (FCM): 1:2,000

Immunocytochemistry (IC): 1:100-1:1,000

SUPPORT

SUPPORT@GENUINBIOTECH.COM
TEL: +1-540-855-7041

ORDERS

SALES@GENUINBIOTECH.COM
FAX: +1-540-855-7041

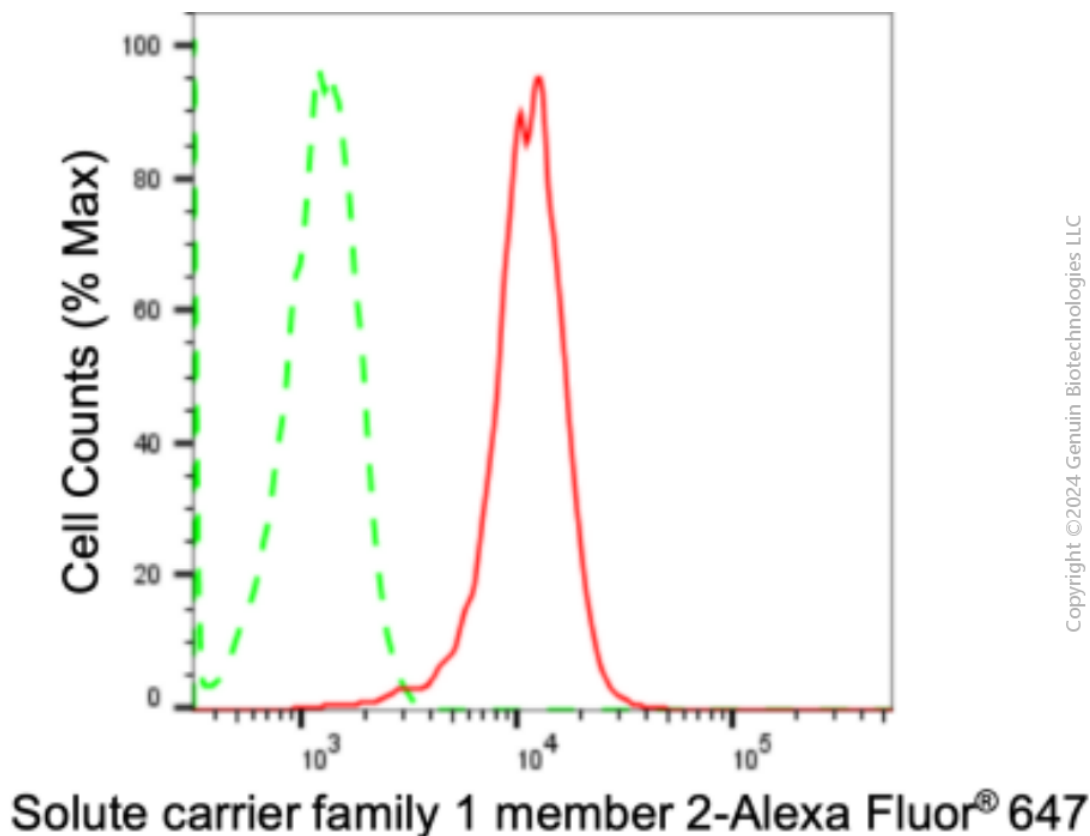
WWW.GENUINBIOTECH.COM

Anti-Solute Carrier Family 1 Member 2 Recombinant Rabbit Monoclonal Antibody

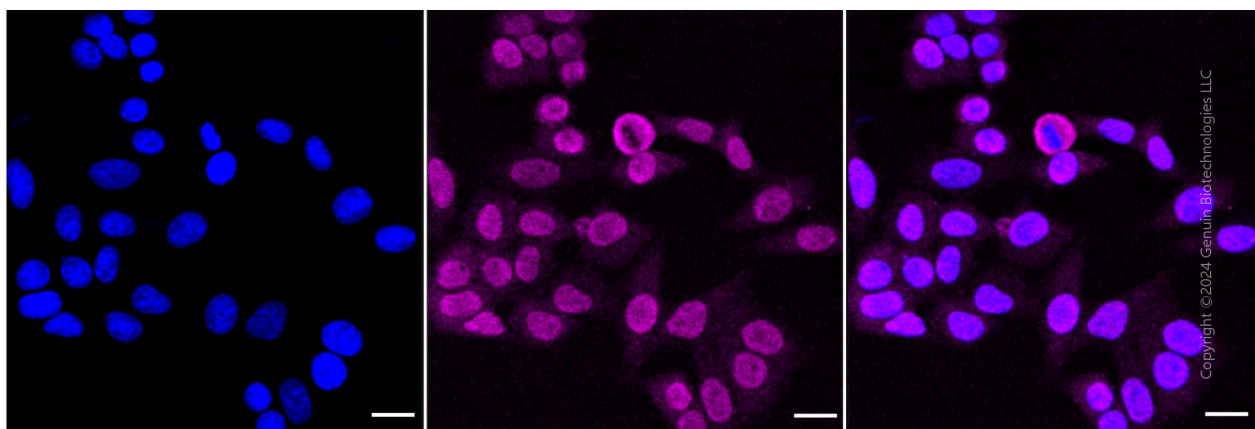
PAGE 2

Note: This product is for research use only.

Validation Data



Flow cytometric analysis of Solute carrier family 1 member 2 expression in HepG2 cells using anti-Solute carrier family 1 member 2 antibody (Cat#2808, 1:2,000). Green, isotype control; red, Solute carrier family 1 member 2.



Immunocytochemical staining of HepG2 cells with anti-Solute carrier family 1 member 2 antibody (Cat#2808, 1:1,000). Nuclei were stained blue with DAPI; Solute carrier family 1 member 2 was stained magenta with Alexa Fluor® 647. Images were taken using Leica stellaris 5. Protein abundance based on laser Intensity and smart gain: Medium. Scale bar: 20 μ m.

SUPPORT

SUPPORT@GENUINBIOTECH.COM
TEL: +1-540-855-7041

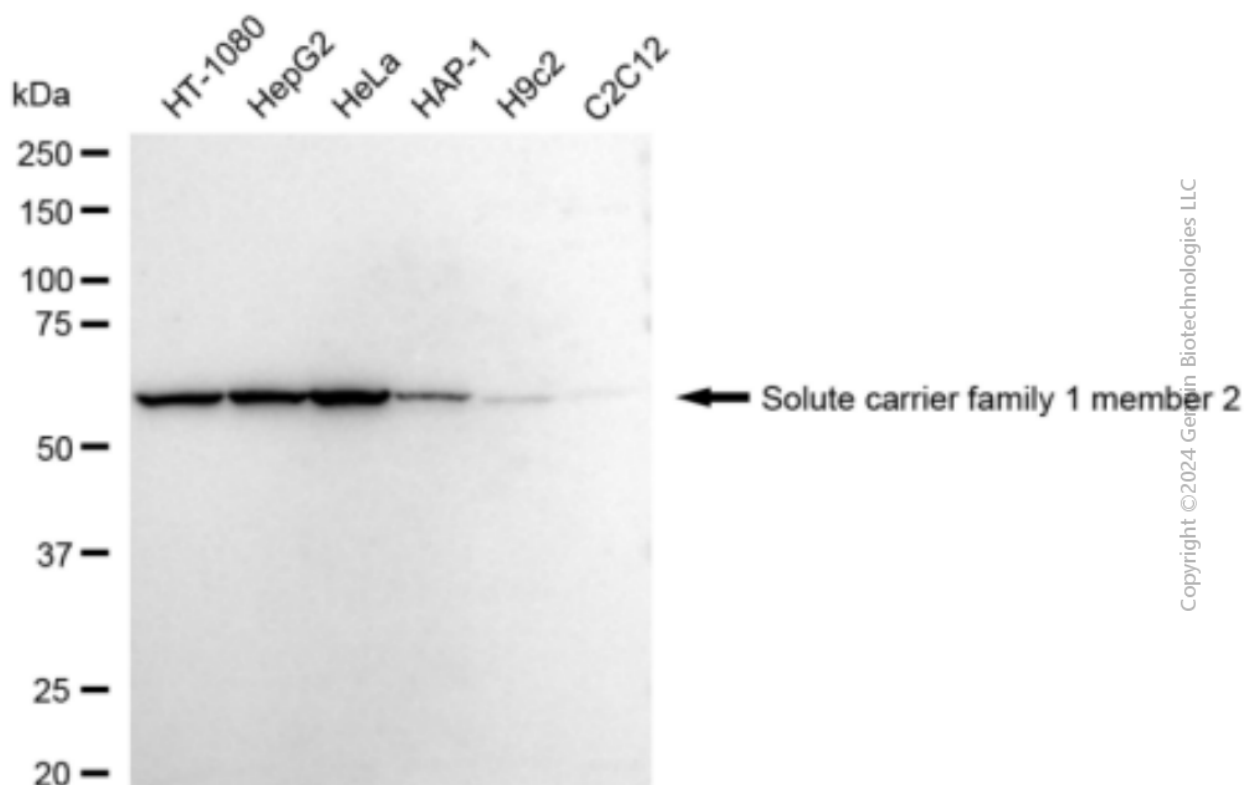
ORDERS

SALES@GENUINBIOTECH.COM
FAX: +1-540-855-7041

WWW.GENUINBIOTECH.COM

Anti-Solute Carrier Family 1 Member 2 Recombinant Rabbit Monoclonal Antibody

PAGE 3



Western blotting analysis using anti-Solute carrier family 1 member 2 antibody (Cat#2808). Total cell lysates (30 μ g) from various cell lines were loaded and separated by SDS-PAGE. The blot was incubated with anti-Solute carrier family 1 member 2 antibody (Cat#2808, 1:5,000) and HRP-conjugated goat anti-rabbit secondary antibody (Cat#201, 1:20,000) respectively. Image was developed using FeQ™ ECL Substrate Kit (Cat#226).

SUPPORT

SUPPORT@GENUINBIOTECH.COM
TEL: +1-540-855-7041

ORDERS

SALES@GENUINBIOTECH.COM
FAX: +1-540-855-7041

WWW.GENUINBIOTECH.COM