

# Anti-Serine/Threonine Kinase 26 Recombinant Rabbit Monoclonal Antibody



## Catalog #: 2811

### Aliases

STK26; Serine/Threonine Kinase 26; MST4; MASK; Serine/Threonine-Protein Kinase MASK; Serine/Threonine-Protein Kinase 26; STE20-Like Kinase MST4; STE20-Like Kinase 4; EC 2.7.11.1; Mammalian Ste20-Like Protein Kinase 4; Mammalian STE20-Like Protein Kinase 4; Serine/Threonine Protein Kinase MST4; Serine/Threonine Protein Kinase 26; Mst3 And SOK1-Related Kinase; MST3 And SOK1-Related Kinase; Mammalian Sterile 20-Like 4; EC 2.7.11; MST-4

### Background

Gene Name: STK26

NCBI Gene Entry: [51765](#)

UniProt Entry: [Q9P289](#)

### Application Information

Molecular Weight: Predicted, 47 kDa; observed, 50 kDa

Clonality: Rabbit monoclonal antibody

Clone ID: 24GB2295

Species Reactivity: Human, mouse, rat

Applications Tested: Western blotting (WB), flow cytometry (FCM), immunocytochemistry (IC)

### Immunogen

A synthesized peptide derived from human MST4

### Isotype

Rabbit IgG

### Storage Buffer

Supplied in PBS (pH 7.4) containing 50% glycerol, and 0.02% sodium azide.

### Storage

Store at -20 °C for one year.

### Recommended Dilutions

Western Blotting (WB): 1:1,000-1:5,000

Flow Cytometry (FCM): 1:2,000

Immunocytochemistry (IC): 1:100-1:1,000

---

#### SUPPORT

SUPPORT@GENUINBIOTECH.COM  
TEL: +1-540-855-7041

#### ORDERS

SALES@GENUINBIOTECH.COM  
FAX: +1-540-855-7041

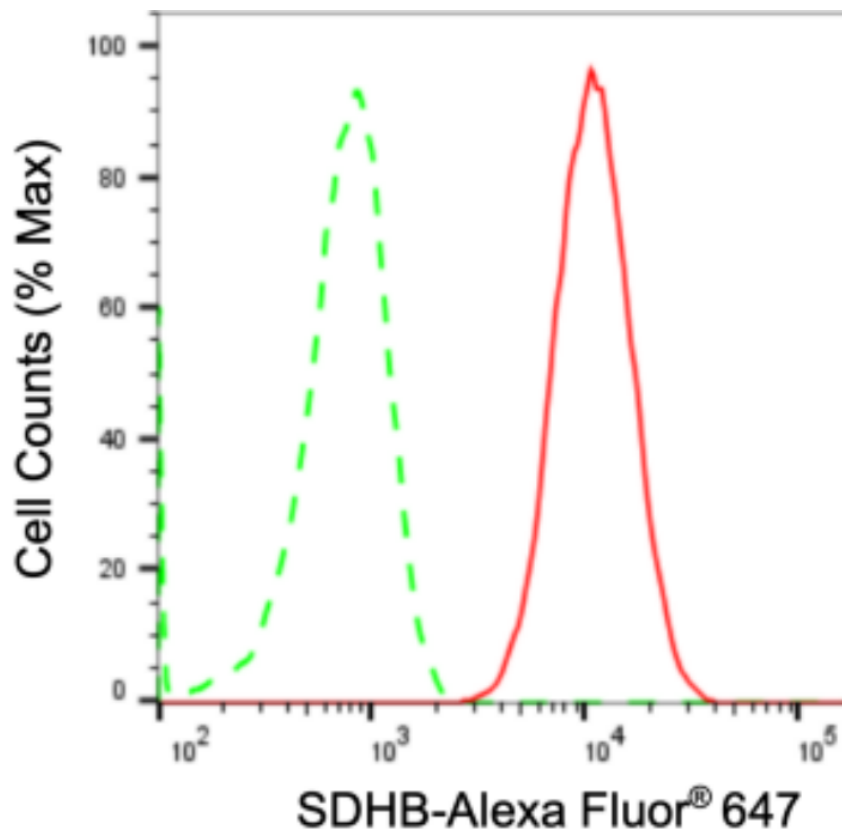
[WWW.GENUINBIOTECH.COM](http://WWW.GENUINBIOTECH.COM)

# Anti-Serine/Threonine Kinase 26 Recombinant Rabbit Monoclonal Antibody

PAGE 2

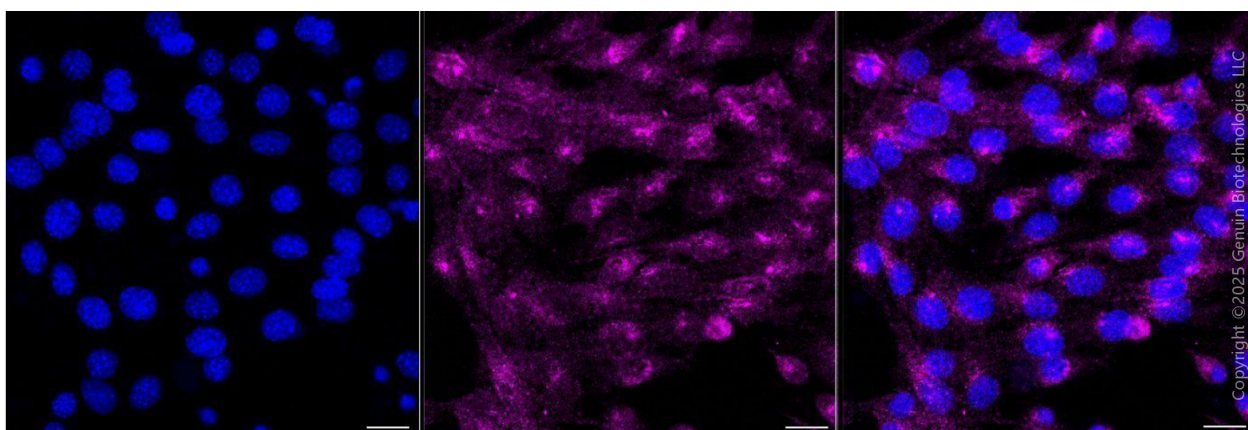
**Note:** This product is for research use only.

## Validation Data



Copyright ©2024 Genuin Biotechnologies LLC

Flow cytometric analysis of serine/threonine kinase 26 expression in C2C12 cells using anti-serine/threonine kinase 26 antibody (Cat#2811, 1:2,000). Green, isotype control; red, serine/threonine kinase 26.



Copyright ©2025 Genuin Biotechnologies LLC

Immunocytochemical staining of C2C12 cells with anti-Serine/threonine kinase 26 antibody (Cat#2811, 1:1,000). Nuclei were stained blue with DAPI; Serine/threonine kinase 26 was stained magenta with Alexa Fluor® 647. Images were taken using Leica stellaris 5. Protein abundance

### SUPPORT

SUPPORT@GENUINBIOTECH.COM  
TEL: +1-540-855-7041

### ORDERS

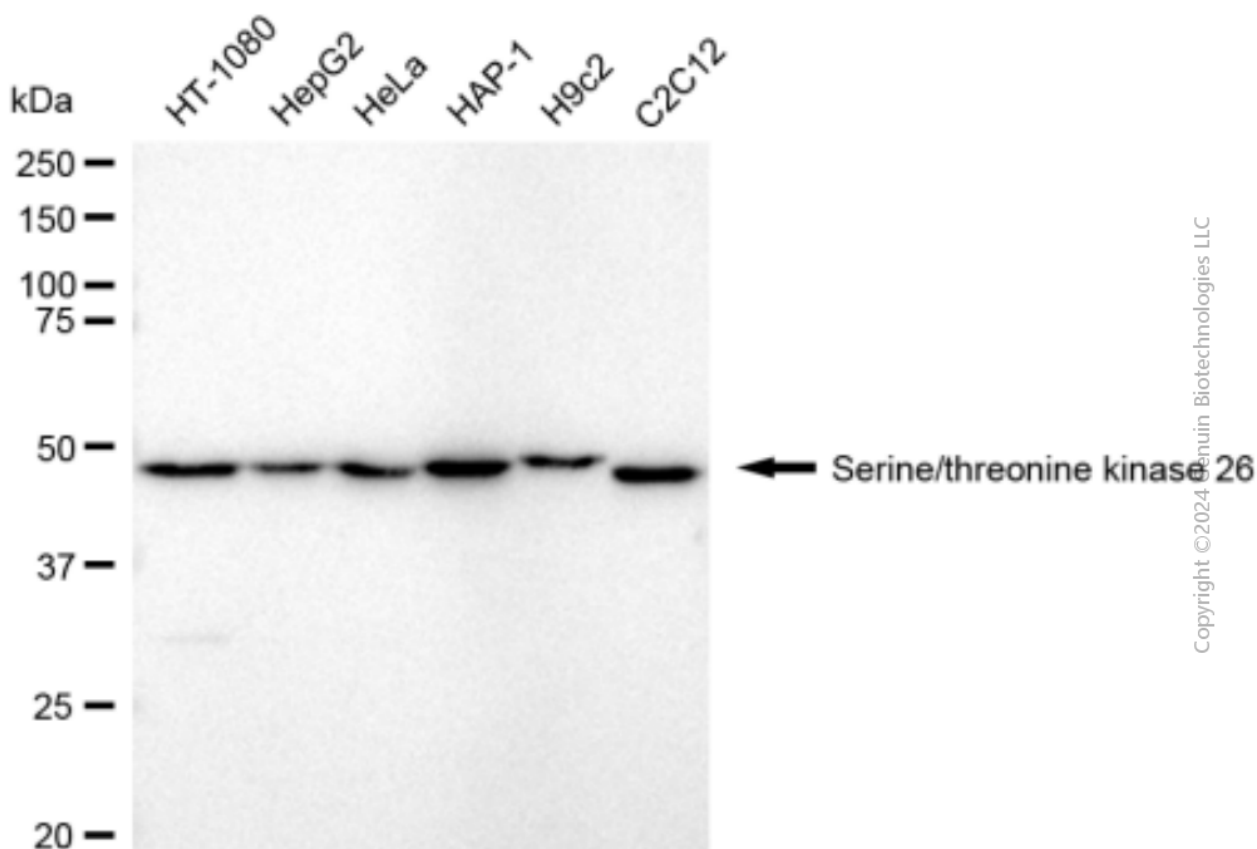
SALES@GENUINBIOTECH.COM  
FAX: +1-540-855-7041

[WWW.GENUINBIOTECH.COM](http://WWW.GENUINBIOTECH.COM)

## Anti-Serine/Threonine Kinase 26 Recombinant Rabbit Monoclonal Antibody

PAGE 3

based on laser Intensity and smart gain: Medium. Scale bar, 20  $\mu$ m.



Copyright © 2024 Genuin Biotechnologies LLC

Western blotting analysis using anti-serine/threonine kinase 26 antibody (Cat#2811). Total cell lysates (30  $\mu$ g) from various cell lines were loaded and separated by SDS-PAGE. The blot was incubated with anti-serine/threonine kinase 26 antibody (Cat#2811, 1:5,000) and HRP-conjugated goat anti-rabbit secondary antibody (Cat#201, 1:20,000) respectively. Image was developed using FeQ™ ECL Substrate Kit (Cat#226).

### SUPPORT

SUPPORT@GENUINBIOTECH.COM  
TEL: +1-540-855-7041

### ORDERS

SALES@GENUINBIOTECH.COM  
FAX: +1-540-855-7041

WWW.GENUINBIOTECH.COM