

Anti-TOMM22 Recombinant Rabbit Monoclonal Antibody



Catalog #: 2814

Aliases

TOMM22; Translocase Of Outer Mitochondrial Membrane 22; TOM22; Translocase Of Outer Membrane 22 KDa Subunit Homolog; Mitochondrial Import Receptor Subunit TOM22 Homolog; 1C9-2; Translocase Of Outer Mitochondrial Membrane 22 Homolog (Yeast); Translocase Of Outer Mitochondrial Membrane 22 Homolog; Mitochondrial Import Receptor Tom22; MSTP065; MST065; HTom22

Background

Gene Name: TOMM22

NCBI Gene Entry: [56993](#)

UniProt Entry: [Q9NS69](#)

Application Information

Molecular Weight: Predicted, 38 kDa; observed, 38 kDa

Clonality: Rabbit monoclonal antibody

Clone ID: 24GB2420

Species Reactivity: Human, mouse, rat

Applications Tested: Western blotting (WB), flow cytometry (FCM), immunocytochemistry (IC)

Immunogen

A synthesized peptide derived from human TOMM22

Isotype

Rabbit IgG

Storage Buffer

Supplied in PBS (pH 7.4) containing 50% glycerol, and 0.02% sodium azide.

Storage

Store at -20 °C for one year.

Recommended Dilutions

Western Blotting (WB): 1:1,000-1:5,000

Flow Cytometry (FCM): 1:2,000

Immunocytochemistry (IC): 1:100-1:1,000

SUPPORT

SUPPORT@GENUINBIOTECH.COM
TEL: +1-540-855-7041

ORDERS

SALES@GENUINBIOTECH.COM
FAX: +1-540-855-7041

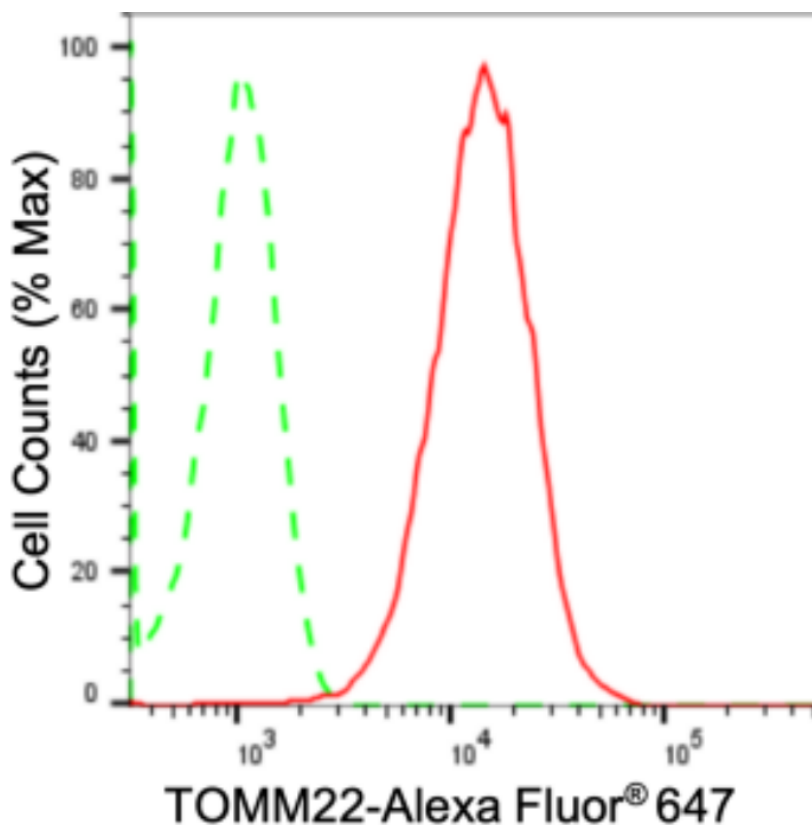
WWW.GENUINBIOTECH.COM

Anti-TOMM22 Recombinant Rabbit Monoclonal Antibody

PAGE 2

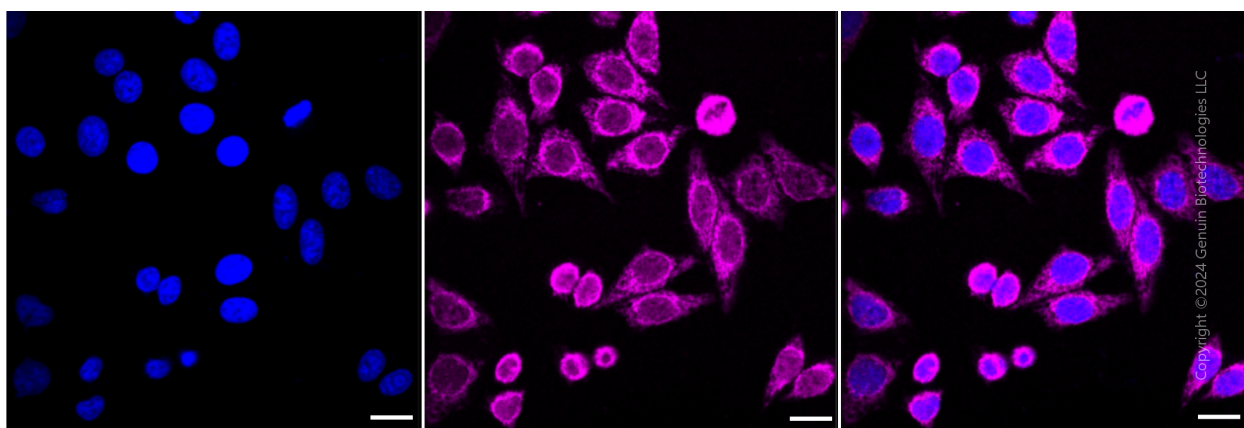
Note: This product is for research use only.

Validation Data



Copyright ©2024 Genuin Biotechnologies LLC

Flow cytometric analysis of TOMM22 expression in HepG2 cells using anti-TOMM22 antibody (Cat#2814, 1:2,000). Green, isotype control; red, TOMM22.



Copyright ©2024 Genuin Biotechnologies LLC

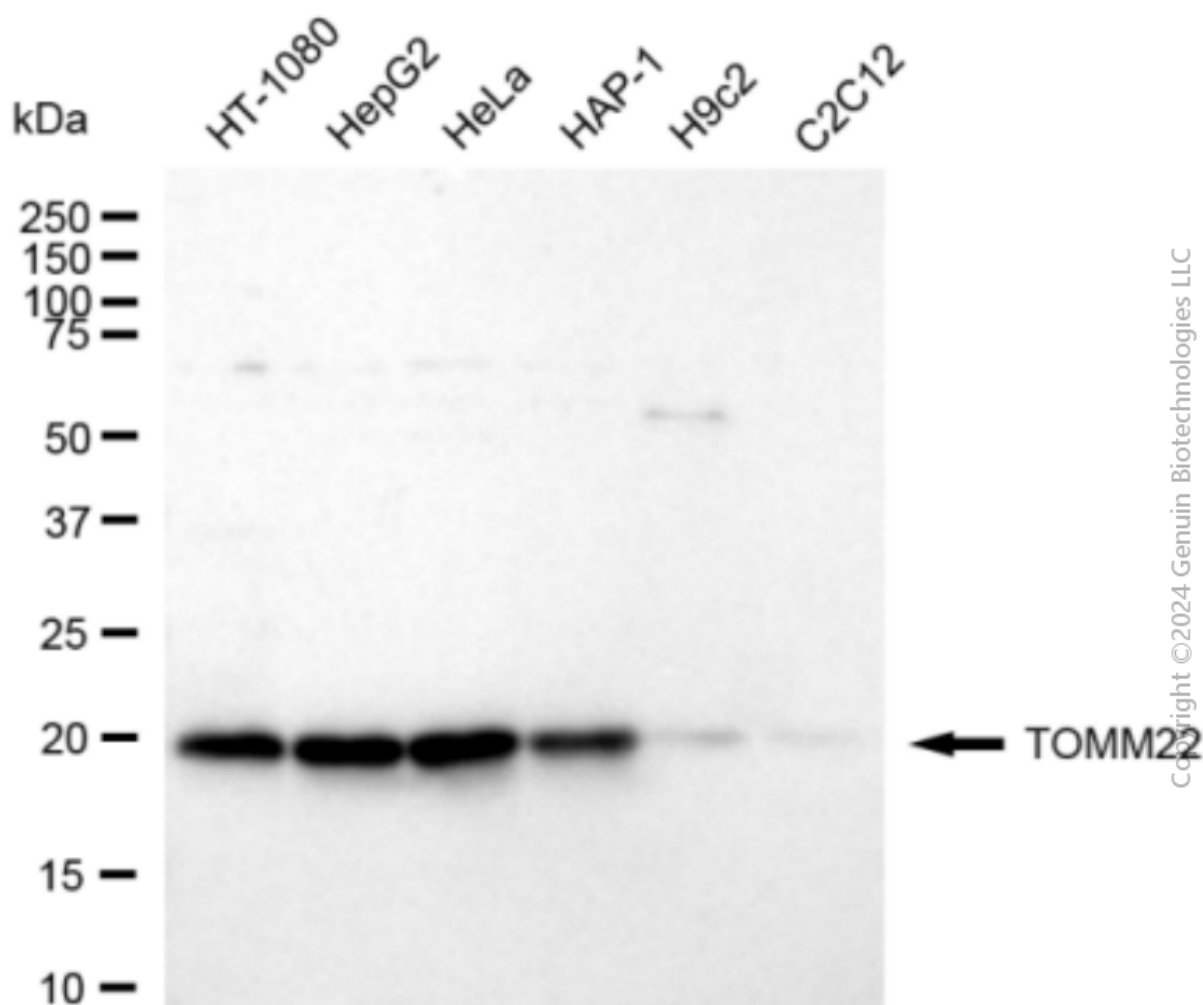
SUPPORT

SUPPORT@GENUINBIOTECH.COM
TEL: +1-540-855-7041

ORDERS

SALES@GENUINBIOTECH.COM
FAX: +1-540-855-7041

WWW.GENUINBIOTECH.COM



Western blotting analysis using anti-TOMM22 antibody (Cat#2814). Total cell lysates (30 µg) from various cell lines were loaded and separated by SDS-PAGE. The blot was incubated with anti-TOMM22 antibody (Cat#2814, 1:5,000) and HRP-conjugated goat anti-rabbit secondary antibody (Cat#201, 1:20,000) respectively. Image was developed using FeQ™ ECL Substrate Kit (Cat#226).