

Anti-TERF1 Interacting Nuclear Factor 2 Recombinant Rabbit Monoclonal Antibody



Catalog #: 2815

Aliases

TINF2; TERF1 Interacting Nuclear Factor 2; TIN2; TERF1 (TRF1)-Interacting Nuclear Factor 2; TERF1-Interacting Nuclear Factor 2; TRF1-Interacting Nuclear Protein 2; DKCA3

Background

Gene Name: TINF2

NCBI Gene Entry: [26277](#)

UniProt Entry: [Q9BSI4](#)

Application Information

Molecular Weight: Predicted, 50 kDa; observed, 40 kDa

Clonality: Rabbit monoclonal antibody

Clone ID: 24GB2450

Species Reactivity: Human, mouse, rat

Applications Tested: Western blotting (WB), immunocytochemistry (IC)

Immunogen

A synthesized peptide derived from human Tin2

Isotype

Rabbit IgG

Storage Buffer

Supplied in PBS (pH 7.4) containing 50% glycerol, and 0.02% sodium azide.

Storage

Store at -20 °C for one year.

Recommended Dilutions

Western Blotting (WB): 1:1,000-1:5,000

Immunocytochemistry (IC): 1:100-1:1,000

Note: This product is for research use only.

Validation Data

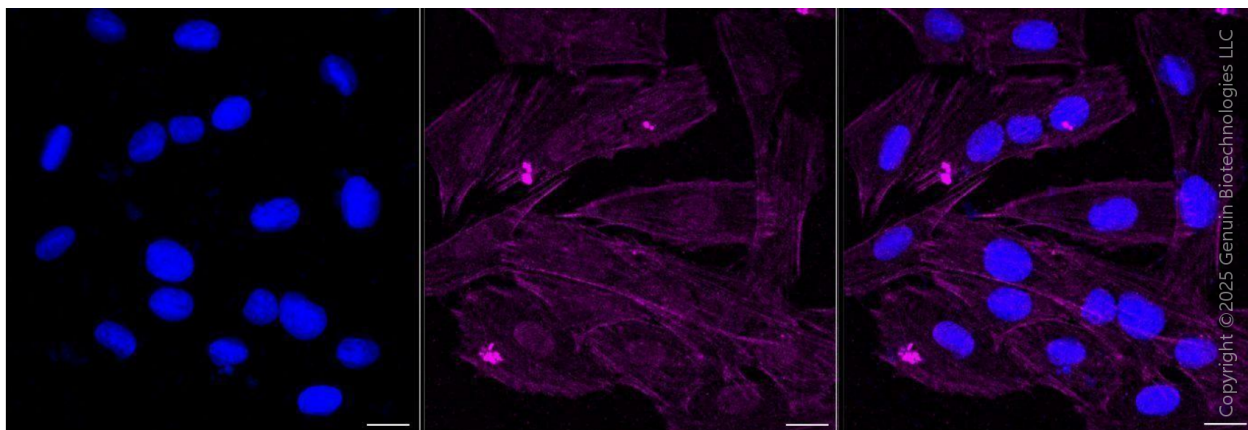
SUPPORT

SUPPORT@GENUINBIOTECH.COM
TEL: +1-540-855-7041

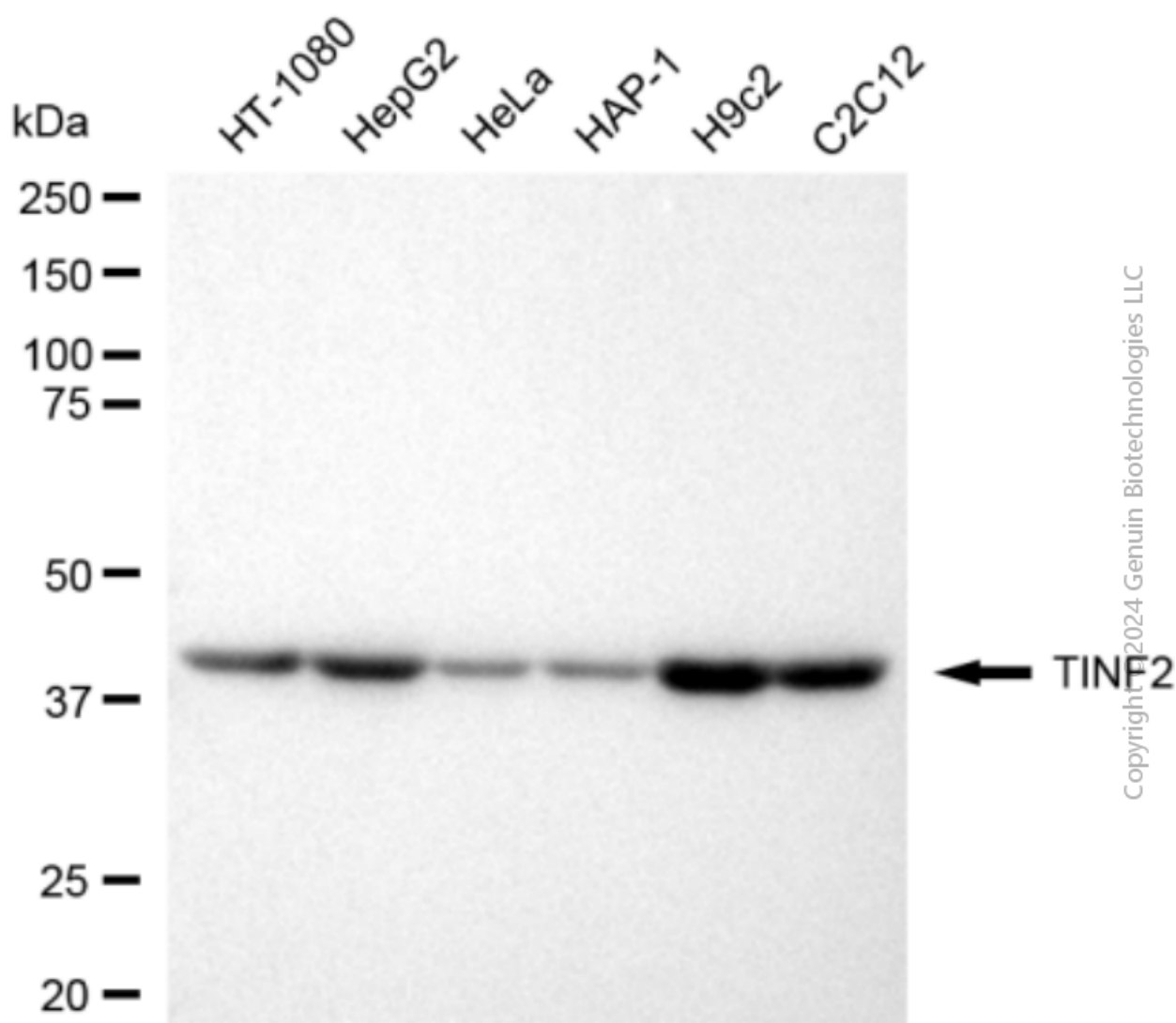
ORDERS

SALES@GENUINBIOTECH.COM
FAX: +1-540-855-7041

WWW.GENUINBIOTECH.COM



Immunocytochemical staining of H9c2 cells with anti-TINF2 antibody (Cat#2815, 1:1,000) . Nuclei were stained blue with DAPI; TINF2 was stained magenta with Alexa Fluor® 647. Images were taken using Leica stellaris 5. Protein abundance based on laser Intensity and smart gain: Medium. Scale bar, 20 μ m.



Western blotting analysis using anti-TINF2 antibody (Cat#2815). Total cell lysates (30 μ g) from various cell lines were loaded and separated by SDS-PAGE. The blot was incubated with anti-TINF2 antibody (Cat#2815, 1:5,000) and HRP-conjugated goat anti-rabbit secondary antibody (Cat#201, 1:20,000) respectively. Image was developed using FeQ™ ECL Substrate Kit (Cat#226).